

Product datasheet for **RG200712**

LSP1 (NM_002339) Human Tagged ORF Clone

Product data:

Product Type:	Expression Plasmids
Product Name:	LSP1 (NM_002339) Human Tagged ORF Clone
Tag:	TurboGFP
Symbol:	LSP1
Synonyms:	pp52; WP34
Mammalian Cell Selection:	Neomycin
Vector:	pCMV6-AC-GFP (PS100010)
E. coli Selection:	Ampicillin (100 ug/mL)
ORF Nucleotide Sequence:	>RG200712 representing NM_002339 Red=Cloning site Blue=ORF Green=Tags(s)

TTTTGTAATACGACTCACTATAGGGCGGCCGGAATTCGTCGACTGGATCCGGTACCGAGGAGATCTGCC
GCC**CGATCGCC**

ATGGCGGAGGCTTCGAGTGACCCGGGTGCTGAGGAGCGGGAAGAGTTGCTGGGGCCACTGCTCAGTGGA
GCGTGGAGGACGAGGAGGAGGCCGTCCACGAGCAATGCCAGCATGAGAGAGACAGGCAGCTTCAGGCCCA
GGACGAGGAGGGAGGCGCCATGTCCCGAGCGGCCGAAGCAGGAGATGCTCCTCAGCCTGAAGCCCTCG
GAGGCCCTGAAGTGGATGAGGACGAGGGCTTTGGCGACTGGTCCAGAGGCCAGAGCAGCGGCAGCAGC
ACGAGGGGGCGCAGGGCACCTTTGGACAGCGGAGAGCCCCCAGTGCAGGAGTCCAGGGGGAGCAAGA
GGACAGGCCCGGCTGCATGCCTACGAAAAGGAGGACAGTGAAGTCCACCTGGAGGAGTTGAGTCTG
AGCAAGGAGGGGCCAGGCCAGAGGACACTGTCCAGGACAACCTGGGGGCCAGGGGCTGAGGAGGAAC
AGGAGGAGCACCAGAAATGTGACGAGCCAGGACACCCAGCCCCCTGGTCTTGGAGGGGACCATCGAACA
GAGCTCGCCTCCCTGAGCCCTACCACAACTCATCGACAGGACCGAGTCCCTAAACCGCTCCATAGAG
AAGAGTAACAGTGTGAAGAAATCCAGCCAGACTTGCCCATCTCCAAGATTGATCAGTGGCTGGAACAAT
ACACCCAGGCCATCGAGACCGTGGCCGGACCCCCAAGCTAGCCCGCCAGGCCTCCATAGAGCTGCCAG
CATGGCTGTGGCCAGTACCAAGAGTCGGTGGGAGACGGGTGAGGTACAGGCTCAGTCTGCGGCCAAGACT
CCGTCCTGCAAGGATATTGTGGCTGGAGACATGAGCAAGAAAAGCCTCTGGGAGCAGAAGGGAGGCTCCA
AGACCTCATCAACAATTAAGAGCACCCCATCTGGGAAGAGGTATAAGTTTGTGCCACCGGGCATGGGAA
GTATGAGAAGGTGCTTGTGGAAGGGGGCCCGGCTCCC

ACGCGTACGCGGCCGCTCGAG - GFP Tag - GTTTAA



[View online »](#)

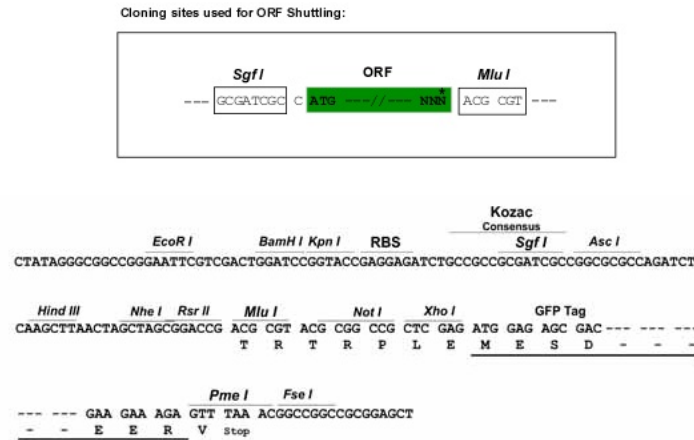
Protein Sequence: >RG200712 representing NM_002339
 Red=Cloning site Green=Tags(s)

MAEASSDPGAEEEREELLGPTAQWSVEDEEEAVHEQCQHERDRQLAQDEEGGHVPERPKQEMLLSLKPS
 EAPELDEDEDFGWSQRPEQRQQHEGAQGLDSEPPQCRSPEGEQEDRPLHAYEKEDSDEVHLEELSL
 SKEGPGPEDTVQDNLGAAGAEQEEHQKCCQPRTPSPLVLEGTIEQSSPPLSPTTKLIDRTESLNRSIE
 KSNSVKKSQPDLPISKIDQWLEQYTQAIETAGRTPKRLARQASIELPSMAVASTKSRWETGEVQAQSAAKT
 PSCKDIVAGDMSKSLWEQKGGSKTSSTIKSTPSGKRYKFVATGHGKYEKVLVEGGPAP

TRTRPLE - GFP Tag - V

Restriction Sites: SgfI-MluI

Cloning Scheme:



ACCN: NM_002339

ORF Size: 1017 bp

OTI Disclaimer: The molecular sequence of this clone aligns with the gene accession number as a point of reference only. However, individual transcript sequences of the same gene can differ through naturally occurring variations (e.g. polymorphisms), each with its own valid existence. This clone is substantially in agreement with the reference, but a complete review of all prevailing variants is recommended prior to use. [More info](#)

OTI Annotation: This clone was engineered to express the complete ORF with an expression tag. Expression varies depending on the nature of the gene.

Components: The ORF clone is ion-exchange column purified and shipped in a 2D barcoded Matrix tube containing 10ug of transfection-ready, dried plasmid DNA (reconstitute with 100 ul of water).

Reconstitution Method:

1. Centrifuge at 5,000xg for 5min.
2. Carefully open the tube and add 100ul of sterile water to dissolve the DNA.
3. Close the tube and incubate for 10 minutes at room temperature.
4. Briefly vortex the tube and then do a quick spin (less than 5000xg) to concentrate the liquid at the bottom.
5. Store the suspended plasmid at -20°C. The DNA is stable for at least one year from date of shipping when stored at -20°C.

RefSeq: [NM_002339.2](#), [NP_002330.1](#)

RefSeq Size: 1756 bp

RefSeq ORF: 1020 bp

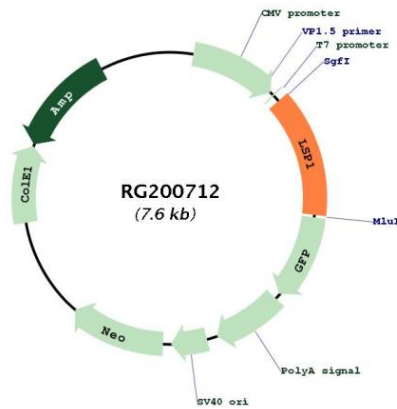
Locus ID: 4046

UniProt ID: [P33241](#)

Cytogenetics: 11p15.5

Gene Summary: This gene encodes an intracellular F-actin binding protein. The protein is expressed in lymphocytes, neutrophils, macrophages, and endothelium and may regulate neutrophil motility, adhesion to fibrinogen matrix proteins, and transendothelial migration. Alternative splicing results in multiple transcript variants encoding different isoforms. [provided by RefSeq, Jul 2008]

Product images:



Circular map for RG200712