

## Product datasheet for **RG200673**

### **PFKP (NM\_002627) Human Tagged ORF Clone**

#### **Product data:**

Product Type:	Expression Plasmids
Product Name:	PFKP (NM_002627) Human Tagged ORF Clone
Tag:	TurboGFP
Symbol:	PFKP
Synonyms:	ATP-PFK; PFK-C; PFK-P; PFKF
Mammalian Cell Selection:	Neomycin
Vector:	pCMV6-AC-GFP (PS100010)
E. coli Selection:	Ampicillin (100 ug/mL)



[View online »](#)

**ORF Nucleotide Sequence:**

>RG200673 representing NM\_002627  
 Red=Cloning site Blue=ORF Green=Tags(s)

TTTTGTAATACGACTCACTATAGGGCGGCCGGAATTCGTCGACTGGATCCGGTACCGAGGAGATCTGCC  
 GCC**CGGATCGCC**

ATGGACGCGGACGACTCCCGGGCCCCAAGGGCTCCTTGCAGGAAATTCCTGGAGCACCTCTCCGGGGCCG  
 GCAAGGCCATCGGCGTGTCTGACCAGCGGGGGATGCTCAAGGTATGAACGCTGCCGTCCGTGCCGTGGT  
 GCGCATGGGTATCTACGTGGGGGCCAAGGTGTACTTCATCTACGAGGGCTACCAGGGCATGGTGGACGGA  
 GGCTCAAACATCGCAGAGGCCGACTGGGAGAGTGTCTCCAGCATCCTGCAAGTGGGCGGGACGATCATTG  
 GCAGTGCAGCGTCCAGGCTTCCGCACCGGGAAAGCCGCTGAAGGCTGCTTGCAACCTGCTGCAGCG  
 CGGCATACCAACCTGTGTGTGATCGCGGGGACGGGAGCCTCACCGGGCCAACCTCTCCGGAAGGAG  
 TGGAGTGGGCTGTGGAGGAGCTGGCCAGGAACGGCCAGATCGATAAGGAGGCCGTGCAGAAGTACGCCCT  
 ACCTCAACGTGGTGGCATGGTGGGCTCCATCGACAATGATTTCTGCGGCACCGACATGACCATCGGCAC  
 GGACTCCGCCCTGCACAGGATCATCGAGTTCGTCGACGCCATCATGACCAGGCCAGAGCCACCAGAGG  
 ACCTTCGTTCTGGAGGTGATGGGACGACTGTGGGTACCTGGCCCTGGTGGTGCCTTGGCCTGCGGTG  
 CGGACTGGGTGTTCCCTCCAGAATCTCCACCAGAGGAAGGCTGGGAGGAGCAGATGTGTGTCAAACCTCTC  
 GGAGAACCGTGCCCGAAAAAAGGCTGAATATTATTATTGTGGCTGAAGGAGCAATTGATACCCAAAAT  
 AAACCCATCACCTCTGAGAAAAACAAGAGCTTGTCTGACGAGCTGGGCTATGACACACGTGTGACCA  
 TCCTCGGGCAGTGCAGAGAGGAGGGACCCCTTCGGCATTGACAGGATCTTGCCAGCCGATGGGAGT  
 GGAGGCAGTATCGCCTTGTAGAGGCCACCCGGACACCCAGCTTGCCTGCTGACTGAACGGGAAC  
 CACGCCGTGCCCTGCCCTGATGGAGTGCCTGCAGATGACTCAGGATGTGCAGAAGGCGATGGACGAGA  
 GGAGATTTCAAGATGCGTTTCGACTCCGAGGGAGGAGCTTTCGGGGCAACCTGAACACCTACAAGCGG  
 TGCCATCAAGCTGCCGGATGATCAGATCCCAAAGACCAATTGCAACGTAGCTGTATCAACGTGGGGGCA  
 CCCGCGCTGGGATGAACGCGGCGTACGCTCAGCTGTGCGCGTGGGATTGCCGACGGCCACAGGATGC  
 TCGCCATCTATGATGGCTTTGACGGCTTCGCAAGGGCCAGATCAAGAAAATCGGCTGGACAGATGTCGG  
 GGGCTGGACCGGCAAGGAGGCTCCATTCTGGGACAAAACGCTTCTCCCGGGGAAGTACTTGAAGAG  
 ATCGCCACACAGATGCGCACGCACAGCATCAACGCGCTGCTGATCATCGGTGGATTTCGAGGCTACCTGG  
 GACTCCTGGAGCTGTAGCCGCCGGGAGAGCACGAGGAGTTCTGTGTCCCATGGTATGGTTCCCGC  
 TACTGTGTCCAACAATGTGCCGGTTCCGATTTACGATCGGGGACAGACCCGCCCTGAACACTATCACC  
 GACACCTGCGACCGCATCAAGCAGTCCGCCAGCGGAACCAAGCGCGCGTTCATCATCGAGACCATGG  
 GCGGCTACTGTGCTACCTGGCCAAATGGGGGGCTCGCGGCCGAGCTGATGCCGCATACATTTTCGA  
 AGAGCCCTTCGACATCAGGGATCTGCAGTCCAACGTGGAGCACCTGACGGAGAAAATGAAGACCACCATC  
 CAGAGAGGCTTGTGCTCAGAAATGAGAGCTGCAGTGAAGTACACCACCGACTTCATTTACCAGCTGT  
 ATTCAGAAGAGGGCAAAGGCGTGTGACTGCAGGAAGAAGTGGTGCATGCAGCAGGGTGGGGC  
 ACCCTCTCATTGATAGAAAATTTGGAACAAAATCTCTGCCAGAGCTATGGAGTGGATCACTGCAAAA  
 CTCAAGGAGGCCCGGGCAGAGGAAAAAATTTACCACCGATGATTCCATTTGTGTGCTGGGAATAAGCA  
 AAAGAAACGTTATTTTTCAACCTGTGGCAGAGCTGAAGAAGCAAACGGATTTTGGACACAGGATTTCCAA  
 AGAACAGTGGTGGCTCAAGCTACGGCCCTCATGAAAATCTGGCCAAGTACAAGGCCAGCTATGACGTG  
 TCGGACTCAGGCCAGCTGGAACATGTGCAGCCCTGGAGTGTG

AGCGGACCGACGCGTACGCGGCCGCTCGAG - GFP Tag - GTTTAA

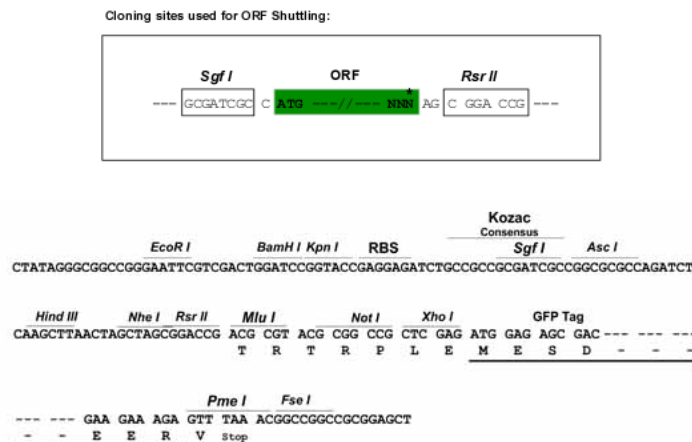
**Protein Sequence:** >RG200673 representing NM\_002627  
 Red=Cloning site Green=Tags(s)

MDADDSRAPKGSRLRFLEHL SGAGKAIGVLTSGGDAQGMNAAVRAVVRMGIYVGAKVYFIYEGYQGMVDG  
 GSNIAEADWESVSSILQVGGTIIGSARCQAFRTREGRLKAACNLLQRGITNL CVIGGDGSLTGANLFRKE  
 WSGLLEELARNGQIDKEAVQKYAYLNVVGMVGSIDNDFCGTDMTIGTDSALHRIIEVVDAIMTTAQSHQR  
 TFLVLEVMGRHCGYLALVSALACGADWVFLPE SPPEEGWEEQMCVKLSENARARKRLNIIIVAEGAIDTQN  
 KPITSEKIKELVVTQLGYDTRVTILGHVQRGGTPSAFDRILASRMGVEAVIALLEATPDTACVSLNGN  
 HAVRLPLMECVQMTQDVQKAMDERRFQDAVRLRGRSFAGNLNTYKRLAIKLPDDQIPKTNCAVAVINVA  
 PAAGMNAAVRSVAVRGIADGHRMLAIYDGFDFAGQIKEIGWTDVGGWTQGGGILGTRKRVLP GKYLEE  
 IATQMRTHSINALLIIGGFEAYLGLLELSAAREKHEEFCVPMVMVPATVSNVPGSDFSIGADTALNTIT  
 DTCDRIKQSASGTRRVFIIETMGGYCYLANMGGLAAGADAAYIFEFPDIRDLQSNVEHLTEKMKTTI  
 QRGLVLRNESCSENYTTDFIYQLYSEEGKGVFDCRKNVLGHMQGGAPSPFDRNFGTKISARAMEWITAK  
 LKEARGRKKFTTDDSIKRVIFQPAELKKQTD FEHRIPKEQWLLKLRPLMKILAKYKASYDV  
 SDSGQLEHVQPWSV

SGPTRRRLE - GFP Tag - V

**Restriction Sites:** SgfI-RsrII

**Cloning Scheme:**



**ACCN:** NM\_002627

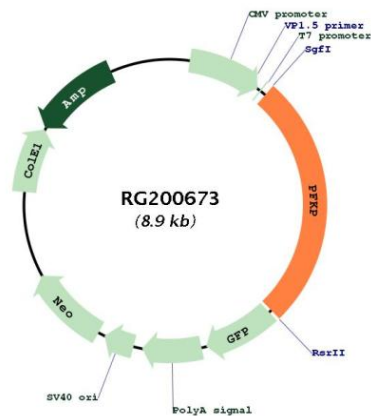
**ORF Size:** 2352 bp

**OTI Disclaimer:** The molecular sequence of this clone aligns with the gene accession number as a point of reference only. However, individual transcript sequences of the same gene can differ through naturally occurring variations (e.g. polymorphisms), each with its own valid existence. This clone is substantially in agreement with the reference, but a complete review of all prevailing variants is recommended prior to use. [More info](#)

**OTI Annotation:** This clone was engineered to express the complete ORF with an expression tag. Expression varies depending on the nature of the gene.

<b>Components:</b>	The ORF clone is ion-exchange column purified and shipped in a 2D barcoded Matrix tube containing 10ug of transfection-ready, dried plasmid DNA (reconstitute with 100 ul of water).
<b>Reconstitution Method:</b>	<ol style="list-style-type: none"> <li>1. Centrifuge at 5,000xg for 5min.</li> <li>2. Carefully open the tube and add 100ul of sterile water to dissolve the DNA.</li> <li>3. Close the tube and incubate for 10 minutes at room temperature.</li> <li>4. Briefly vortex the tube and then do a quick spin (less than 5000xg) to concentrate the liquid at the bottom.</li> <li>5. Store the suspended plasmid at -20°C. The DNA is stable for at least one year from date of shipping when stored at -20°C.</li> </ol>
<b>RefSeq:</b>	<u><a href="#">NM_002627.1</a></u>
<b>RefSeq Size:</b>	2628 bp
<b>RefSeq ORF:</b>	2355 bp
<b>Locus ID:</b>	5214
<b>UniProt ID:</b>	<u><a href="#">Q01813</a></u>
<b>Cytogenetics:</b>	10p15.2
<b>Domains:</b>	PFK
<b>Protein Families:</b>	Druggable Genome
<b>Protein Pathways:</b>	Fructose and mannose metabolism, Galactose metabolism, Glycolysis / Gluconeogenesis, Metabolic pathways, Pentose phosphate pathway
<b>Gene Summary:</b>	This gene encodes a member of the phosphofructokinase A protein family. The encoded enzyme is the platelet-specific isoform of phosphofructokinase and plays a key role in glycolysis regulation. This gene may play a role in metabolic reprogramming in some cancers, including clear cell renal cell carcinomas, and cancer of the bladder, breast, and lung. Alternative splicing results in multiple transcript variants. [provided by RefSeq, Sep 2016]

**Product images:**



Circular map for RG200673