

Product datasheet for **RG200651**

PAX8 (NM_003466) Human Tagged ORF Clone

Product data:

Product Type:	Expression Plasmids
Product Name:	PAX8 (NM_003466) Human Tagged ORF Clone
Tag:	TurboGFP
Symbol:	PAX8
Mammalian Cell Selection:	Neomycin
Vector:	pCMV6-AC-GFP (PS100010)
E. coli Selection:	Ampicillin (100 ug/mL)
ORF Nucleotide Sequence:	>RG200651 representing NM_003466 Red=Cloning site Blue=ORF Green=Tags(s)

TTTTGTAATACGACTCACTATAGGGCGGCCGGAATTCGTCGACTGGATCCGGTACCGAGGAGATCTGCC
GCC**CGATCGCC**

ATGCCTCACAACCTCCATCAGATCTGGCCATGGAGGGCTGAACCAGCTGGGAGGGGCTTTGTGAATGGCA
GACCTCTGCCGGAAGTGGTCCGCCAGCGCATCGTAGACCTGGCCACCAGGGTGTAAAGCCCTGCCGACAT
CTCTCGCCAGCTCCGCGTCAGCCATGGCTGCGTCAGCAAGATCCTTGGCAGGTAACGAGACTGGCAGC
ATCCGGCTGGAGTGATAGGGGGCTCCAAGCCCAAGGTGGCCACCCCAAGGTGGTGGAGAAGATTGGGG
ACTACAAACGCCAGAACCCTACCATGTTTGCCTGGGAGATCCGAGACCGGCTCCTGGCTGAGGGGCTCTG
TGACAATGACACTGTGCCAGTGTGAGTCCATTAATAGAAATCATCCGGACCAAAGTGCAGCAACCATT
AACCTCCCTATGGACAGCTGCGTGGCCACCAAGTCCCTGAGTCCCGGACACACGCTGATCCCCAGCTCAG
CTGTAACCTCCCGGAGTCAACCCAGTCGGATTCCCTGGGCTCCACCTACTCCATCAATGGGCTCCTGGG
CATCGCTCAGCCTGGCAGCGACAAGAGGAAAAATGGATGACAGTGATCAGGATAGCTGCCGACTAAGCATT
GACTCACAGAGCAGCAGCAGCGGACCCCGAAAGCACCTTCGCACGGATGCCTTCAGCCAGCACCACCTCG
AGCCGCTCGAGTGCCATTTGAGCGGCAGCACTACCCAGAGGCCATGCCTCCCCAGCCACACCAAAGG
CGAGCAGGGCCTCTACCCGCTGCCCTTGCTCAACAGCACCCCTGGACGACGGGAAGGCCACCCTGACCCT
TCCAACACGCCACTGGGGCGAACCTCTGACTACCAGACCTACCCCGTGGTGGCAGATCTCACTCAC
CCTTCGCCATAAAGCAGGAAACCCCGAGGTGTCCAGTTCAGCTCCACCCTTCTCTTTATCTAGCTC
CGCCTTTTTGGATCTGCAGCAAGTGGCTCCGGGTCGGGCTCCGCTTCAATGCCTTTCCCATGCTGCCTCC
GTGTACGGGCAGTTCACGGGCCAGGCCCTCCTCTCAGGGCGAGAGATGGTGGGGCCACGCTGCCCGGAT
ACCCACCCACATCCCCACAGCGGACAGGGCAGCTATGCCTCCTCTGCCATCGCAGGCATGGTGGCAGG
AAGTGAATACTCTGGCAATGCCTATGGCCACACCCCTACTCCTCTACAGCGAGGCCTGGCGCTTCCCC
AACTCCAGCTTGCTGAGTTCCCATATTATTACAGTTCACATCAAGGCCGAGTGCACCGCCACCACCTG
CCACGGCCTTTGACCATCTG

ACGCGTACGCGGCCGCTCGAG - GFP Tag - GTTTAA



[View online »](#)

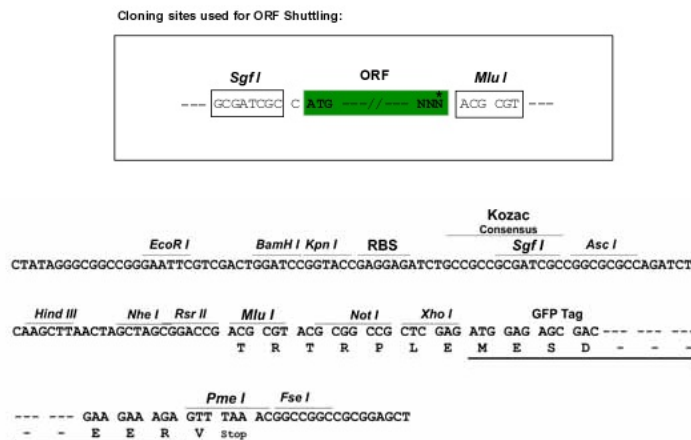
Protein Sequence: >RG200651 representing NM_003466
 Red=Cloning site Green=Tags(s)

MPHNSIRSGHGGLNQLGGAFVNGRPLPEVVRQRIVDLAHQGVVPCDISRQLRVSHGCVSKILGRYYETGS
 IRPGVIGGSKPKVATPKVVEKIGDYKRQNPMTFAWEIRDRLLAEGVCDNDTVPSVSSINRIIRTQVQPP
 NLPMDSCVATKSLSPGH TLIPSSAVTPPE SPQSDSLGSTYSINGLLGIAQPGSDKRKMDSDSDQSCRLSI
 DSQSSSSGPRKHLRTDAFSQHLEPLECFERQHYP EAYASPSHTKGEQGLYPLLLNSTLDDGKATLTP
 SNTPLGRNLSTHQTYPVVADPHSPFAIKQETPEVSSSSSTPSSLSSSAFLDLQQVGSVPPFNAPPHAAS
 VYQFTGQALLSGREMGPTLPGYPPHIPTSGQGSYASSAIAGMVAGSEYSGNAYGHTPYSSYSEAWRFP
 NSSLLSPYYYSSTRSPSAPPTTATAFDHL

TRTRPLE – GFP Tag – V

Restriction Sites: SgfI-MluI

Cloning Scheme:



ACCN: NM_003466

ORF Size: 1350 bp

OTI Disclaimer: The molecular sequence of this clone aligns with the gene accession number as a point of reference only. However, individual transcript sequences of the same gene can differ through naturally occurring variations (e.g. polymorphisms), each with its own valid existence. This clone is substantially in agreement with the reference, but a complete review of all prevailing variants is recommended prior to use. [More info](#)

OTI Annotation: This clone was engineered to express the complete ORF with an expression tag. Expression varies depending on the nature of the gene.

Components: The ORF clone is ion-exchange column purified and shipped in a 2D barcoded Matrix tube containing 10ug of transfection-ready, dried plasmid DNA (reconstitute with 100 ul of water).

Reconstitution Method:

1. Centrifuge at 5,000xg for 5min.
2. Carefully open the tube and add 100ul of sterile water to dissolve the DNA.
3. Close the tube and incubate for 10 minutes at room temperature.
4. Briefly vortex the tube and then do a quick spin (less than 5000xg) to concentrate the liquid at the bottom.
5. Store the suspended plasmid at -20°C. The DNA is stable for at least one year from date of shipping when stored at -20°C.

RefSeq: [NM_003466.4](#)

RefSeq Size: 2707 bp

RefSeq ORF: 1353 bp

Locus ID: 7849

UniProt ID: [Q06710](#)

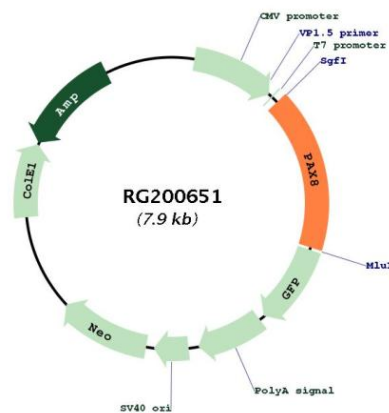
Cytogenetics: 2q14.1

Protein Families: Druggable Genome, Transcription Factors

Protein Pathways: Pathways in cancer, Thyroid cancer

Gene Summary: This gene encodes a member of the paired box (PAX) family of transcription factors. Members of this gene family typically encode proteins that contain a paired box domain, an octapeptide, and a paired-type homeodomain. This nuclear protein is involved in thyroid follicular cell development and expression of thyroid-specific genes. Mutations in this gene have been associated with thyroid dysgenesis, thyroid follicular carcinomas and atypical follicular thyroid adenomas. Alternatively spliced transcript variants encoding different isoforms have been described. [provided by RefSeq, Mar 2010]

Product images:



Circular map for RG200651