

Product datasheet for **RG200626**

Pirin (PIR) (NM_001018109) Human Tagged ORF Clone

Product data:

Product Type:	Expression Plasmids
Product Name:	Pirin (PIR) (NM_001018109) Human Tagged ORF Clone
Tag:	TurboGFP
Symbol:	Pirin
Mammalian Cell Selection:	Neomycin
Vector:	pCMV6-AC-GFP (PS100010)
E. coli Selection:	Ampicillin (100 ug/mL)
ORF Nucleotide Sequence:	>RG200626 representing NM_001018109 Red=Cloning site Blue=ORF Green=Tags(s)

TTTTGTAATACGACTCACTATAGGGCGGCCGGAATTCGTCGACTGGATCCGGTACCGAGGAGATCTGCC
GCC**CGATCGCC**

ATGGGGTCCTCCAAGAAAGTTACTCTCTCAGTGCTCAGCCGGGAGCAGTCGGAAGGGTTGGAGCGAGGG
TCCGGAGAAGCATTGGCAGACCCGAGTTAAAAATCTGGATCCGTTTTACTGTTTGATGAATTTAAAGG
AGGTAGACCAGGAGGATTTCTGATCATCCACATCGAGTTTTGAAACAGTATCCTACCTCCTGGAAGGG
GGCAGCATGGCCCATGAAGACTTCTGTGGACACACTGGTAAAATGAACCCAGGAGATTTGCAGTGGATGA
CTGCGGGCCGGGCATTCTGCACGCTGAGATGCCTTGCTCAGAGGAGCCAGCCCATGGCCTACAACCTGTG
GGTTAATTTGAGGAGCTCAGAGAAGATGGTGGAGCCTCAGTACCAGGAAGTGAAGAAATCCCT
AAACCCAGTAAGGATGGTGTGACAGTTGCTGTCAATTTCTGGAGAAGCCCTGGGAATAAAGTCCAAGGTTT
ACACTCGCACACCAACCTTATATTTGGACTTCAAATTGGACCCAGGAGCCAAACATTCACCAACCTATCCC
TAAAGGGTGGACAAGCTTCATTTACACGATATCTGGAGATGTGTATATTGGGCCCGATGATGCACAACAA
AAAATAGAACCTCATCACACAGCAGTGTGGAGAAGGTGACAGTGTCCAGGTGGAGAACAAGGATCCCA
AGAGAAGCCACTTTGTCTTAATTGCTGGGGAGCCATTAAGAGAACCAGTTATCCAACATGGTCCATTTGT
GATGAACACCAATGAAGAGATTTCTCAAGCTATTCTTGATTTAGAAAACGCAAAAAATGGTTTGAAGG
GCCAAAACCTGGAAATCAAAGATTGGGAAC

ACGCGTACGCGGCCGCTCGAG - GFP Tag - GTTTAA



[View online »](#)

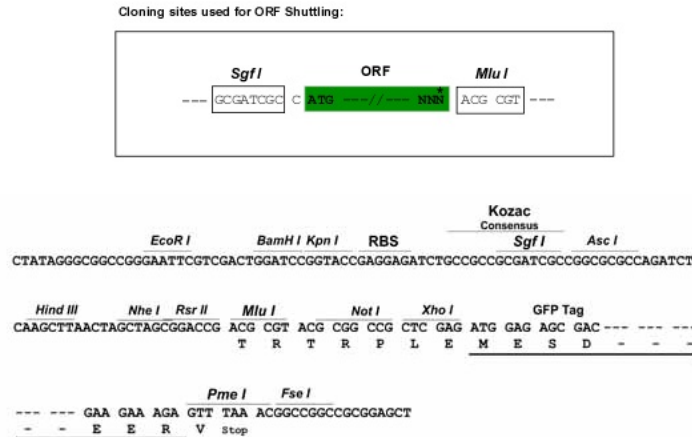
Protein Sequence: >RG200626 representing NM_001018109
 Red=Cloning site Green=Tags(s)

MGSSKKVTL SVLSREQSEGVGARVRRSIGRPELKNLDPFLLFDEFKGGPRGGFPDHPHRGFETVSYLLEG
 GSM AHDFCGHTGKMNPGLQWMTAGRGILHAEMPCSEEP AHGLQLWVNLRSSEKMVEPQYQELKSEEIP
 KPSKDGVTVAVISGEALGIKSKVYTRPTLYLDFKLDPGAKHSQIPKGWTSFIYITISGDVYIGPDDAQQ
 KIEPHHTAVLGE GDSVQVENKDPKRSHFVLIAGEPLREPVIQHGP FVMNTNEEISQA ILDFRNAKNGFER
 AKTWKSKIGN

TRTRPLE - GFP Tag - V

Restriction Sites: SgfI-MluI

Cloning Scheme:



ACCN: NM_001018109

ORF Size: 870 bp

OTI Disclaimer: The molecular sequence of this clone aligns with the gene accession number as a point of reference only. However, individual transcript sequences of the same gene can differ through naturally occurring variations (e.g. polymorphisms), each with its own valid existence. This clone is substantially in agreement with the reference, but a complete review of all prevailing variants is recommended prior to use. [More info](#)

OTI Annotation: This clone was engineered to express the complete ORF with an expression tag. Expression varies depending on the nature of the gene.

Components: The ORF clone is ion-exchange column purified and shipped in a 2D barcoded Matrix tube containing 10ug of transfection-ready, dried plasmid DNA (reconstitute with 100 ul of water).

Reconstitution Method:

1. Centrifuge at 5,000xg for 5min.
2. Carefully open the tube and add 100ul of sterile water to dissolve the DNA.
3. Close the tube and incubate for 10 minutes at room temperature.
4. Briefly vortex the tube and then do a quick spin (less than 5000xg) to concentrate the liquid at the bottom.
5. Store the suspended plasmid at -20°C. The DNA is stable for at least one year from date of shipping when stored at -20°C.

RefSeq: [NM_001018109.3](#)

RefSeq Size: 1282 bp

RefSeq ORF: 873 bp

Locus ID: 8544

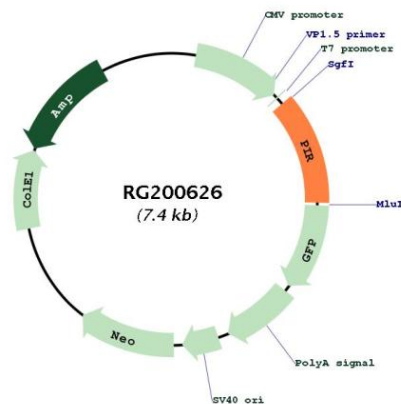
UniProt ID: [O00625](#)

Cytogenetics: Xp22.2

Protein Families: Transcription Factors

Gene Summary: This gene encodes a member of the cupin superfamily. The encoded protein is an Fe(II)-containing nuclear protein expressed in all tissues of the body and concentrated within dot-like subnuclear structures. Interactions with nuclear factor I/CCAAT box transcription factor as well as B cell lymphoma 3-encoded oncoprotein suggest the encoded protein may act as a transcriptional cofactor and be involved in the regulation of DNA transcription and replication. Alternatively spliced transcript variants have been described. [provided by RefSeq, Jul 2008]

Product images:



Circular map for RG200626