

Product datasheet for **RG200604**

Cytochrome b5 Outer Mitochondrial Membrane (CYB5B) (NM_030579) Human Tagged ORF Clone

Product data:

Product Type:	Expression Plasmids
Product Name:	Cytochrome b5 Outer Mitochondrial Membrane (CYB5B) (NM_030579) Human Tagged ORF Clone
Tag:	TurboGFP
Symbol:	Cytochrome b5 Outer Mitochondrial Membrane
Synonyms:	CYB5-M; CYPB5M; OMB5
Mammalian Cell Selection:	Neomycin
Vector:	pCMV6-AC-GFP (PS100010)
E. coli Selection:	Ampicillin (100 ug/mL)
ORF Nucleotide Sequence:	>RG200604 representing NM_030579 Red=Cloning site Blue=ORF Green=Tags(s)

TTTTGTAATACGACTCACTATAGGGCGGCCGGAATTCGTCGACTGGATCCGGTACCGAGGAGATCTGCC
GCC**CGATCGCC**

ATGGCGACTGCGGAAGCTAGCGGCAGCGATGGAAAGGGCAGGAAGTCGAGACCTCAGTCACCTATTACC
GGTTGGAGGAGGTGGCAAAGCGCAACTCCTTGAAGGAAGTGTGGCTTGTGATCCATGGCGAGTCTACGA
TGTCACCCGCTTCCTCAACGAGCACCTGGAGGAGAAGAGGTTCTGCTGGAACAAGCTGGTGTAGATGCA
AGTGAAAGCTTTGAAGATGTAGGACACTTCTGATGCCAGAGAAATGCTAAAGCAGTACTACATTGGTG
ATATCCATCCGAGTGACCTTAAACCTGAAAGTGGTAGCAAGGACCTTCAAAAAATGATACATGCAAAAG
TTGCTGGGCATATTGGATTTTACCCATCATAGGCGCTGTTCTCTTAGGTTTCTGTACCGCTACTACACA
TCGAAAAGCAAATCCTCC

ACGCGTACGCGGCCGCTCGAG - GFP Tag - GTTTAA

Protein Sequence:	>RG200604 representing NM_030579 Red=Cloning site Green=Tags(s)
-------------------	--

MATAEASGSDGKQEVETSVTYRLEEVAKRNSLKLWLVIHGRVYDVTRFLNEHPGGEEVLLLEQAGVDA
SESFEDVGHSSDAREMLKQYYIGDIHPSDLKPESGSKDPSKNDTCKSCWAYWILPIIGAVLLGFLYRYT
SESKSS

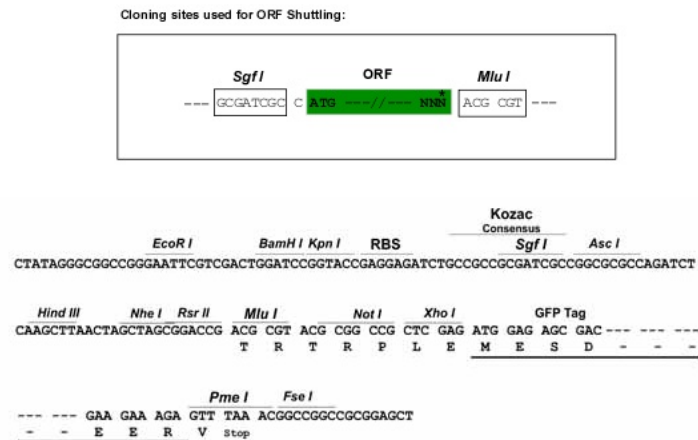
TRTRPLE - GFP Tag - V



[View online »](#)

Restriction Sites: SgfI-MluI

Cloning Scheme:



ACCN: NM_030579

ORF Size: 438 bp

OTI Disclaimer: The molecular sequence of this clone aligns with the gene accession number as a point of reference only. However, individual transcript sequences of the same gene can differ through naturally occurring variations (e.g. polymorphisms), each with its own valid existence. This clone is substantially in agreement with the reference, but a complete review of all prevailing variants is recommended prior to use. [More info](#)

OTI Annotation: This clone was engineered to express the complete ORF with an expression tag. Expression varies depending on the nature of the gene.

Components: The ORF clone is ion-exchange column purified and shipped in a 2D barcoded Matrix tube containing 10ug of transfection-ready, dried plasmid DNA (reconstitute with 100 ul of water).

Reconstitution Method:

1. Centrifuge at 5,000xg for 5min.
2. Carefully open the tube and add 100ul of sterile water to dissolve the DNA.
3. Close the tube and incubate for 10 minutes at room temperature.
4. Briefly vortex the tube and then do a quick spin (less than 5000xg) to concentrate the liquid at the bottom.
5. Store the suspended plasmid at -20°C. The DNA is stable for at least one year from date of shipping when stored at -20°C.

RefSeq: [NM_030579.1](#), [NP_085056.1](#)

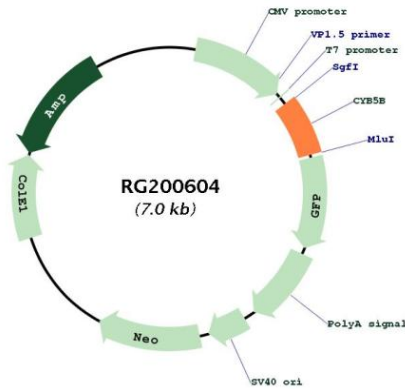
RefSeq Size: 4286 bp

RefSeq ORF: 453 bp

Locus ID: 80777

UniProt ID: [O43169](#)
 Cytogenetics: 16q22.1
 Domains: heme_1
 Protein Families: Transmembrane
 Gene Summary: Cytochrome b5 is a membrane-bound hemoprotein functioning as an electron carrier for several membrane-bound oxygenases.[UniProtKB/Swiss-Prot Function]

Product images:



Circular map for RG200604