

Product datasheet for **RG200596**

GDI2 (NM_001494) Human Tagged ORF Clone

Product data:

Product Type:	Expression Plasmids
Product Name:	GDI2 (NM_001494) Human Tagged ORF Clone
Tag:	TurboGFP
Symbol:	GDI2
Synonyms:	HEL-S-46e; RABGDIB
Mammalian Cell Selection:	Neomycin
Vector:	pCMV6-AC-GFP (PS100010)
E. coli Selection:	Ampicillin (100 ug/mL)



[View online »](#)

ORF Nucleotide Sequence:

>RG200596 representing NM_001494
 Red=Cloning site Blue=ORF Green=Tags(s)

TTTTGTAATACGACTCACTATAGGGCGGCCGGAATTCGTCGACTGGATCCGGTACCGAGGAGATCTGCC
 GCC**CGGATCGCC**

ATGAATGAGGAGTACGACGTGATCGTGCTGGGCACCGCCTGACGGAATGTATCCTGTCAGGTATAATGT
 CAGTGAATGGCAAGAAAGTTCTTCATATGGATCGAAACCCTTACTACGGAGGAGAGAGTGCATCTATAAC
 ACCATTGGAAGATTTATACAAAAGATTTAAAATACCAGGATCACCAACCCGAGTCAATGGGAGAGGAAGA
 GACTGGAATGTTGACTTGATTCCCAAGTTCCTTATGGCTAATGGTCAGCTGGTTAAGATGCTGCTTTATA
 CAGAGGTAACCTCGCTATCTGGATTTTAAAGTACTGAAGGGAGCTTTGTCTATAAGGGTGGAAAAATCTA
 CAAGGTTCCCTCCACTGAAGCAGAAGCCCTGGCATCTAGCCTAATGGGATTGTTTAAAAACGTCGCTTC
 AGGAAATTCCTAGTGTATGTTGCCAACTTCGATGAAAAAGATCCAAGAACTTTTGAAGGCATTGATCCTA
 AGAAGACCACAATGCGAGATGTGTATAAGAAATTTGATTTGGGTCAAGACGTTATAGATTTTACTGGTCA
 TGCTCTTGCACTTTACAGAACTGATGATTACTTAGATCAACCGTGTATGAAACCATTAATAGAATTA
 CTTTACAGTGAATCTTTGGCAAGATATGGCAAAAGCCCATACCTTTATCCACTCTATGGCCTTGGAGAAC
 TGCCCCAAGGATTTGCAAGGCTAAGTGCTATTTATGGAGGTACCTATATGCTGAATAAACCCATTGAAGA
 AATCATTGTACAGAAATGGAAAAGTAATGGTGTAAAATCTGAAGGAGAAATTGCTCGCTGTAAGCAGCTC
 ATCTGTGACCCCGACTACGTAAGATCGGGTAGAAAAAGTGGGCCAGGTGATCAGAGTTATTTGCATCC
 TCAGCCACCCCATCAAGAACCAATGATGCCAACTCCTGCCAGATCATTATCCACAGAACCAAGTCAA
 TCGAAAGTCAGATATCTACGTCTGCATGATCTCCTTTGCCACAATGTAGCAGCACAAGGGAAGTACATT
 GCTATAGTTAGTACAACGTGGAACCAAGGAGCCTGAGAAGGAAATCAGACCAGCTTTGGAGCTTTGG
 AACCAATTGAACAGAAATTTGTTAGCATCAGTGACCTCCTGGTACCAAAAGACTTGGGAACAGAAAGCCA
 GATCTTTTATTTCCGCACATATGATGCCACCACTCATTTTGAGACAACGTGTGATGACATTA
 TATAAGAGGATGACAGGATCAGAGTTTACTTTGAGGAAATGAAGCGCAAGAAGAATGACATCTATGGG
 AAGAC

ACGCGTACGCGGCCGCTCGAG - GFP Tag - GTTTAA

Protein Sequence:

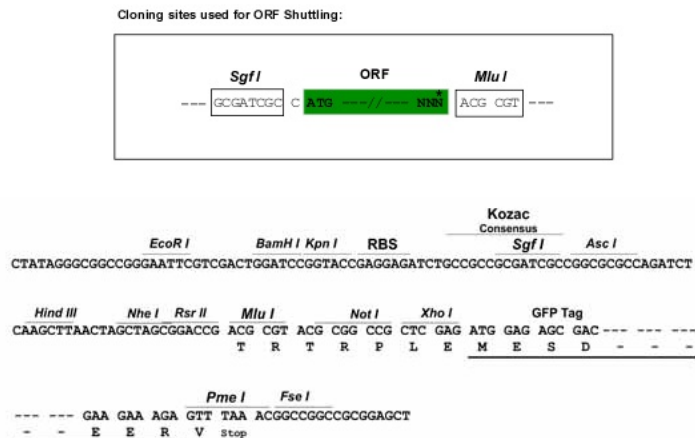
>RG200596 representing NM_001494
 Red=Cloning site Green=Tags(s)

MNEEYDIVLGTGLTECILSGIMSVNGKVLHMDRNPYYGGESASITPLEDLYKRFKIPGSPPESMGRGR
 DWNVDLIPKFLMANGQLVKMLLYTEVTRYLDFKVTEGSFVYKGGKIYKVPSTEAEALASSLMGLFEKRRF
 RKFLVYVANFDEKDPRTFEGIDPKKTTMRDVYKFDLQDVIDFTGHALALYRTDDYLDQPCYETINRIK
 LYSESLARYGKSPYLPLYGLGELPQGFARLSAIYGGTYMLNKP IEE IIVQNGKVI GVKSEGEIARCKQL
 ICDPSTYKDRVEKVGQVIRVICILSHPIKNTNDANSCQIIIPQNQVNRKSDIYVCMISFAHNVAQAQGYI
 AIVSTTVETKEPEKEIRPALELLEPIEQKFVVISDILLVPKDLGTESQIFISRTYDATTHFETTCDIKNI
 YKRMTGSEFDFEEMKRKKNDIYGED

TRTRPLE - GFP Tag - V

Restriction Sites:

SgfI-MluI

Cloning Scheme:


ACCN: NM_001494

ORF Size: 1335 bp

OTI Disclaimer: The molecular sequence of this clone aligns with the gene accession number as a point of reference only. However, individual transcript sequences of the same gene can differ through naturally occurring variations (e.g. polymorphisms), each with its own valid existence. This clone is substantially in agreement with the reference, but a complete review of all prevailing variants is recommended prior to use. [More info](#)

OTI Annotation: This clone was engineered to express the complete ORF with an expression tag. Expression varies depending on the nature of the gene.

Components: The ORF clone is ion-exchange column purified and shipped in a 2D barcoded Matrix tube containing 10ug of transfection-ready, dried plasmid DNA (reconstitute with 100 ul of water).

Reconstitution Method:

1. Centrifuge at 5,000xg for 5min.
2. Carefully open the tube and add 100ul of sterile water to dissolve the DNA.
3. Close the tube and incubate for 10 minutes at room temperature.
4. Briefly vortex the tube and then do a quick spin (less than 5000xg) to concentrate the liquid at the bottom.
5. Store the suspended plasmid at -20°C. The DNA is stable for at least one year from date of shipping when stored at -20°C.

RefSeq: [NM_001494.4](#)

RefSeq Size: 2274 bp

RefSeq ORF: 1338 bp

Locus ID: 2665

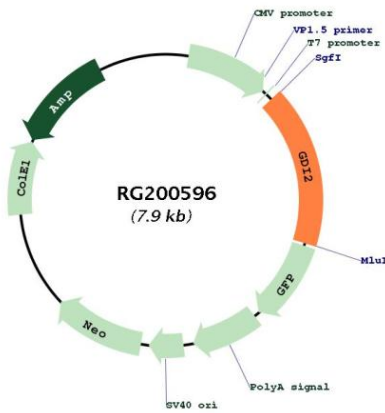
UniProt ID: [P50395](#)

Cytogenetics: 10p15.1

Domains: GDI

Gene Summary: GDP dissociation inhibitors are proteins that regulate the GDP-GTP exchange reaction of members of the rab family, small GTP-binding proteins of the ras superfamily, that are involved in vesicular trafficking of molecules between cellular organelles. GDIs slow the rate of dissociation of GDP from rab proteins and release GDP from membrane-bound rabs. GDI2 is ubiquitously expressed. The GDI2 gene contains many repetitive elements indicating that it may be prone to inversion/deletion rearrangements. Alternative splicing results in multiple transcript variants encoding distinct isoforms. [provided by RefSeq, Jul 2008]

Product images:



Circular map for RG200596