

Product datasheet for **RG200568**

Integrin beta 4 binding protein (EIF6) (NM_002212) Human Tagged ORF Clone

Product data:

| | |
|---------------------------|---|
| Product Type: | Expression Plasmids |
| Product Name: | Integrin beta 4 binding protein (EIF6) (NM_002212) Human Tagged ORF Clone |
| Tag: | TurboGFP |
| Symbol: | Integrin beta 4 binding protein |
| Synonyms: | b(2)gcn; CAB; eIF-6; EIF3A; ITGB4BP; p27(BBP); p27BBP |
| Mammalian Cell Selection: | Neomycin |
| Vector: | pCMV6-AC-GFP (PS100010) |
| E. coli Selection: | Ampicillin (100 ug/mL) |
| ORF Nucleotide Sequence: | >RG200568 representing NM_002212 Red=Cloning site Blue=ORF Green=Tags(s) |

TTTTGTAATACGACTCACTATAGGGCGGCCGGAATTCGTCGACTGGATCCGGTACCGAGGAGATCTGCC
GCC**CGATCGCC**

ATGGCGGTCCGAGCTTCGTTTCGAGAACAACGTGAGATCGGCTGCTTTGCCAAGCTCACCAACACCTACT
GTCTGGTAGCGATCGGAGGCTCAGAGAATTCTACAGTGTGTTTCGAGGGCGAGCTCTCCGATACCATCCC
CGTGGTGACGCGTCTATCGCCGGCTGCCGCATCATCGGGCGCATGTGTGTGGGAAACAGGCACGGTCTC
CTGGTACCAACAATACCACCGACCAGGAGCTGCAACACATTTCGCAACAGCCTCCAGACACAGTGCAGA
TTAGGCGGGTGGAGGAGCGGCTCTCAGCCTTGGGCAATGTCACCACCTGCAATGACTACGTGGCCTTGGT
CCACCCAGACTTGACAGGGAGACAGAAGAAATTCGGCAGATGTGCTCAAGGTGGAAGTCTTCAGACAG
ACAGTGGCCGACCAGGTGCTAGTAGGAAGTACTGTGTCTTCAGCAATCAGGGAGGGCTGGTGCATCCCA
AGACTTCAATTGAAGACCAGGATGAGCTGTCTCTCTTCTTCAAGTCCCCCTTGTGGCGGGGACTGTGAA
CCGAGGCAGTGAGGTGATTGCTGCTGGGATGGTGGTGAATGACTGGTGTGCCTTCTGTGGCTGGACACA
ACCAGCACAGAGCTGTCAGTGGTGGAGAGTGTCTTCAAGCTGAATGAAGCCAGCCTAGCACCATTGCCA
CCAGCATGCGGGATTCCCTCATTGACAGCCTCACC

AC**GGCCCGCTCGAG** - GFP Tag - GTTTAA



[View online »](#)

Protein Sequence: >RG200568 representing NM_002212
 Red=Cloning site Green=Tags(s)

MAVRASFENNCEIGCFAKLTNTYCLVAIGGSENFYSVFEGELSDTIPVVHASIAGCRIIGRMCVGNRHGL
 LVPNNTDQELQHIRNSLPDTVQIRRVVEERLSALGNVTCNDYVALVHPDLDRETEEILADVLKVEVFRQ
 TVADQVLVGSYCVFSNQGLVHPKTSIEDQDELSSLLQVPLVAGTVNRGSEVIAAGMVVNDWCAFCGLDT
 TSTELSVVESVFKLNEAQPSTIATSMRDSLIDSLT

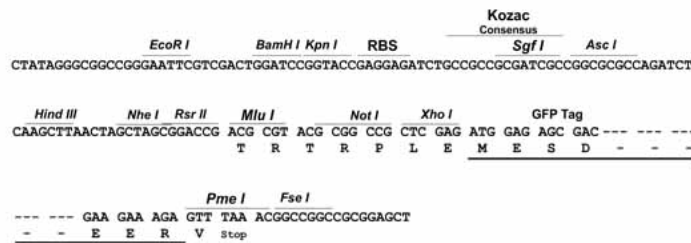
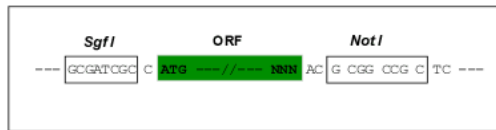
TRPLE - GFP Tag - V

Chromatograms: https://cdn.origene.com/chromatograms/ja1905_e10.zip

Restriction Sites: SgfI-NotI

Cloning Scheme:

Cloning sites used for ORF Shutting:



ACCN: NM_002212

ORF Size: 735 bp

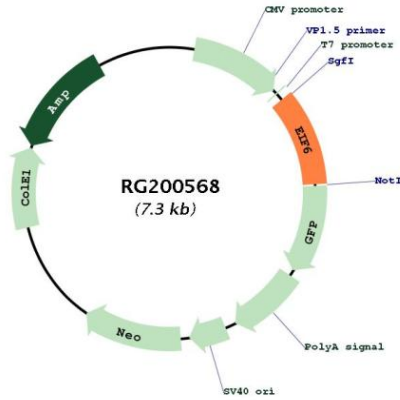
OTI Disclaimer: Due to the inherent nature of this plasmid, standard methods to replicate additional amounts of DNA in E. coli are highly likely to result in mutations and/or rearrangements. Therefore, OriGene does not guarantee the capability to replicate this plasmid DNA. Additional amounts of DNA can be purchased from OriGene with batch-specific, full-sequence verification at a reduced cost. Please contact our customer care team at custsupport@origene.com or by calling 301.340.3188 option 3 for pricing and delivery.

The molecular sequence of this clone aligns with the gene accession number as a point of reference only. However, individual transcript sequences of the same gene can differ through naturally occurring variations (e.g. polymorphisms), each with its own valid existence. This clone is substantially in agreement with the reference, but a complete review of all prevailing variants is recommended prior to use. [More info](#)

OTI Annotation: This clone was engineered to express the complete ORF with an expression tag. Expression varies depending on the nature of the gene.

| | |
|-------------------------------|---|
| Components: | The ORF clone is ion-exchange column purified and shipped in a 2D barcoded Matrix tube containing 10ug of transfection-ready, dried plasmid DNA (reconstitute with 100 ul of water). |
| Reconstitution Method: | <ol style="list-style-type: none">1. Centrifuge at 5,000xg for 5min.2. Carefully open the tube and add 100ul of sterile water to dissolve the DNA.3. Close the tube and incubate for 10 minutes at room temperature.4. Briefly vortex the tube and then do a quick spin (less than 5000xg) to concentrate the liquid at the bottom.5. Store the suspended plasmid at -20°C. The DNA is stable for at least one year from date of shipping when stored at -20°C. |
| RefSeq: | NM_002212.4 |
| RefSeq Size: | 1114 bp |
| RefSeq ORF: | 738 bp |
| Locus ID: | 3692 |
| UniProt ID: | P56537 |
| Cytogenetics: | 20q11.22 |
| Domains: | eIF6 |
| Protein Families: | Druggable Genome |
| Gene Summary: | <p>Hemidesmosomes are structures which link the basal lamina to the intermediate filament cytoskeleton. An important functional component of hemidesmosomes is the integrin beta-4 subunit (ITGB4), a protein containing two fibronectin type III domains. The protein encoded by this gene binds to the fibronectin type III domains of ITGB4 and may help link ITGB4 to the intermediate filament cytoskeleton. The encoded protein, which is insoluble and found both in the nucleus and in the cytoplasm, can function as a translation initiation factor and prevent the association of the 40S and 60S ribosomal subunits. Multiple non-protein coding transcript variants and variants encoding two different isoforms have been found for this gene. [provided by RefSeq, Jun 2012]</p> |

Product images:



Circular map for RG200568