

Product datasheet for **RG200515**

PCOLCE (NM_002593) Human Tagged ORF Clone

Product data:

Product Type:	Expression Plasmids
Product Name:	PCOLCE (NM_002593) Human Tagged ORF Clone
Tag:	TurboGFP
Symbol:	PCOLCE
Synonyms:	PCPE; PCPE-1; PCPE1
Mammalian Cell Selection:	Neomycin
Vector:	pCMV6-AC-GFP (PS100010)
E. coli Selection:	Ampicillin (100 ug/mL)



[View online »](#)

ORF Nucleotide Sequence:

>RG200515 representing NM_002593
 Red=Cloning site Blue=ORF Green=Tags(s)

TTTTGTAATACGACTCACTATAGGGCGGCCGGAATTCGTCGACTGGATCCGGTACCGAGGAGATCTGCC
 GCC**CGGATCGCC**

ATGCTGCCTGCAGCCACAGCCTCCCTCCTGGGGCCCTCCTCACTGCCTGCGCCCTGCTGCCTTTTGCCC
 AGGGCCAGACCCCAACTACACCAGACCGTGTTCCTGTGCGGAGGGGATGTGAAGGGGAATCAGGTTA
 CGTGGCAAGTGAGGGGTTCCCAACCTCTACCCCTAATAAGGAGTGCATCTGGACCATAACGGTCCCC
 GAGGGCCAGACTGTGTCCTCTCATTCCGAGTCTTCGACCTGGAGCTGCACCCCGCTGCCGCTACGATG
 CTCTGGAGGTCTTCGCTGGTCTGGGACTTCGGCCAGCGGCTCGGACGCTTTTGTGGGACCTTCGGCC
 TGCGCCCTAGTCGCCCCGGCAACCAGGTGACCTGAGGATGACGACGGATGAGGGCACAGGAGGACGA
 GGCTTCCTGCTCTGGTACAGCGGGCGGCCACCTCGGCACTGAGCACCATTTTTCGGGGGGCGGCTGG
 AGAAGGCCAGGGAACCTGACCACGCCAACTGGCCGAGTCCGATTACCCCGGGCATCAGCTGTTT
 CTGGCACATCATCGCCCCCGGACCAGGTTCATCGCGTACCTTCGAGAAGTTTGACCTGGAGCCGGAC
 ACCTACTGCCGCTATGACTCGGTGAGCGTGTCAACGGAGCCGTGAGCGAGACTCCCGGAGGCTGGGA
 AGTTCTGCGGCGACGAGTCCCGGGTCCATCTCCTCCGAAGGAATGAACCTCCTCGTCCAGTTCGTCTC
 AGATCTCAGTGTACCGCTGATGGCTTCTCAGCCTCCTACAAGACCCTGCCGCGGGGCACTGCCAAAGAA
 GGGCAAGGGCCCGGCCCAACGGGGAAGTGAAGCTAAAGTCAAGCTGCCCCCAAGTCCCAACCTCCGG
 AGAAAACAGAGGAATCTCCTTACGCCCCGTGACACCCACCTGCCCAAAGCAGTCCCGCCGGACAGGCAC
 CTTGCAGAGCAACTTCTGTGCCAGCAGCCTTGTGGTACTGCGACAGTGAAGTCCATGGTTCGGGAGCCA
 GGGGAGGGCCTTCCGTGACTGTGACTTATTGGTCTTATAAACTGGAGGACTGGACCTGCCTTCTC
 CACCCACTGGTGCCTCCCTGAAGTTTTACGTGCCTTGAAGCAGTGCACCCCATGAAGAAGGAGTCTCAG
 TTATCTGCTGATGGGCCAGGTAGAAGAGAAGAGAGGCCCGTCCCTCCTCCAGAGAGCTTTGTGGTTCTC
 CACCGGCCAACCAGGACCAGATCCTCACCAACCTAAGCAAGAGGAAGTCCCTCTCAACCTGTGCGGG
 CTGCTGCGTCCAGGAC

ACGCGTACGCGGCCGCTCGAG – GFP Tag – GTTTAA

Protein Sequence:

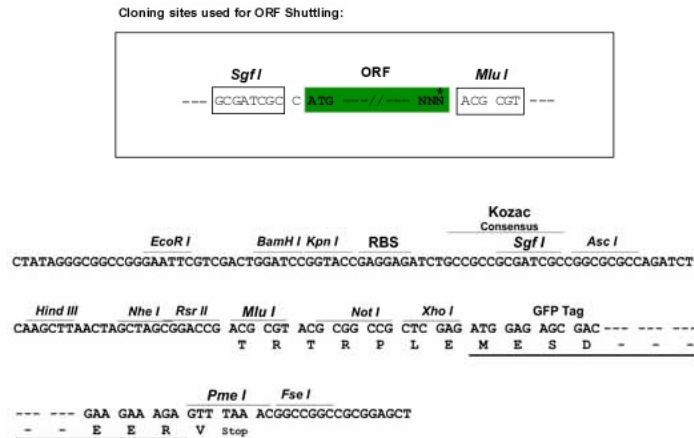
>RG200515 representing NM_002593
 Red=Cloning site Green=Tags(s)

MLPAATASLLGPLLTACALLPFAQGQTPNYTRPVFLCGGDVKGESGYVASEGFNLYPPNKECIWTITVP
 EGQTVSLSFRVFDLELHPACRYDALEVFAGSGTSGQRLGRFCGTFRPAPLVAPGNQVTLRMTTDEGTGGR
 GFLLWYSGRATSGTEHQFCGGRLEKAQGLTTPNWPESDYPPGISCSWHIIAPPDQVIALTFEKFDLEPD
 TYCRYDSVSVFNGAVSDDSRRLGKFCGDAVPGSISSEGNELLVQFVSDLVSTADGFSASYKTLPRGTAKE
 GQGPGRKRGTEPKVKLPPKSQPPEKTEESPSAPDAPTCPKQCRRTGLQSNFCASSLVVATVKSMVREP
 GEGLAVTVSLIGAYKTGGLDLPSPPTGASLKFYVPCQCPMKKGVSYLLMGQVEENRGPVLPPESEFVVL
 HRPNQDQILTNLKSRKCPSPVRAASQD

TRTRPLE – GFP Tag – V

Restriction Sites:

SgfI-MluI

Cloning Scheme:


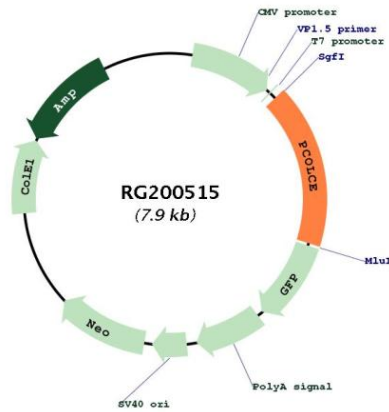
ACCN:	NM_002593
ORF Size:	1347 bp
OTI Disclaimer:	The molecular sequence of this clone aligns with the gene accession number as a point of reference only. However, individual transcript sequences of the same gene can differ through naturally occurring variations (e.g. polymorphisms), each with its own valid existence. This clone is substantially in agreement with the reference, but a complete review of all prevailing variants is recommended prior to use. More info
OTI Annotation:	This clone was engineered to express the complete ORF with an expression tag. Expression varies depending on the nature of the gene.
Components:	The ORF clone is ion-exchange column purified and shipped in a 2D barcoded Matrix tube containing 10ug of transfection-ready, dried plasmid DNA (reconstitute with 100 ul of water).
Reconstitution Method:	<ol style="list-style-type: none"> 1. Centrifuge at 5,000xg for 5min. 2. Carefully open the tube and add 100ul of sterile water to dissolve the DNA. 3. Close the tube and incubate for 10 minutes at room temperature. 4. Briefly vortex the tube and then do a quick spin (less than 5000xg) to concentrate the liquid at the bottom. 5. Store the suspended plasmid at -20°C. The DNA is stable for at least one year from date of shipping when stored at -20°C.
RefSeq:	NM_002593.4
RefSeq Size:	1510 bp
RefSeq ORF:	1350 bp
Locus ID:	5118
UniProt ID:	Q15113
Cytogenetics:	7q22.1

Domains: CUB, NTR

Protein Families: Secreted Protein

Gene Summary: Fibrillar collagen types I-III are synthesized as precursor molecules known as procollagens. These precursors contain amino- and carboxyl-terminal peptide extensions known as N- and C-propeptides, respectively, which are cleaved, upon secretion of procollagen from the cell, to yield the mature triple helical, highly structured fibrils. This gene encodes a glycoprotein which binds and drives the enzymatic cleavage of type I procollagen and heightens C-proteinase activity. [provided by RefSeq, Jul 2008]

Product images:



Circular map for RG200515