

Product datasheet for **RG200514**

NPD014 (RSRP1) (NM_020317) Human Tagged ORF Clone

Product data:

Product Type: Expression Plasmids
Product Name: NPD014 (RSRP1) (NM_020317) Human Tagged ORF Clone
Tag: TurboGFP
Symbol: NPD014
Synonyms: C1orf63; NPD014
Mammalian Cell Selection: Neomycin
Vector: pCMV6-AC-GFP (PS100010)
E. coli Selection: Ampicillin (100 ug/mL)
ORF Nucleotide Sequence: >RG200514 representing NM_020317
 Red=Cloning site Blue=ORF Green=Tags(s)

GACGTTGTATACGACTCCTATAGGGCGGCCGGAATTCGTCGACTGGATCCGGTACCGAGGAGATCTGCC
 GCC**GGCGCGCC**

ATGTCCAACACGTGAACGACATGTGGCCGGGCTCGCCGAGGAGAAGGATTCGCCCTCGACCTCGCGGT
 CGGGCGGGTCCAGCCGGCTGTCGTCGCGGTCTAGGAGCCGCTCTTTTCCAGAAGCTCTCGGTCCCATT
 CCGCGTCTCGAGCCGGTTTTTCGTCAGGAGTCCGAGGAGCAAGTCCAGGTCCCGTCCCGAAGCGCCAC
 CAGCGGAAGTACAGGCGCTACTCGCGTACTACTCGCGGAGCCGGTCCGATCCCGCAGCCGCCGTTACC
 GAGAGAGGCGCTACGGGTTACCCAGGAGATACTACCGGTCTCCTTCGCGGTACCGGTCCCGTCCCGTAG
 CAGGTCGCGCTCTCGGGGAAGGTCGTAAGTGCAGGAGGCGTACCGGATCGCGCGGGGACAGCGCTACTAC
 GGCTTTGGTCGCACAGTGTACCCGGAGGAGCACAGCAGATGGAGGGACAGATCCAGGACGAGGTCGCGGA
 GCAGAACCCCTTTTCGCTTAAGTAAAAAGATCGAATGGAGCTGTTAGAAATAGCAAAAACCAATGCAGC
 GAAAGCTCTAGGAACAACCAACATTGACTTGCCAGCTAGTCTCAGAACTGTTCTTCAGCCAAAAGAAACA
 AGCCGTGGAATAGGTGTATCAAGTAATGGTGCAAAAGCCTGAAGTGTGCGAAAAGGTAACAGAAGATGGAA
 CTCGAAATCCCAATGAAAACCTACCCAGCAAAGAAGCATAGCTTTTAGCTCTAATAATTCTGTAGCAAA
 GCCAATACAAAATCAGCTAAAGCTGCCACAGAAGAGGCATCTTCAAGATCACAAAAATAGATCAGAAA
 AAAAGTCCATATGGACTGTGGATACCTATC

ACGCGTACGCGGCCGCTCGAG - GFP Tag - GTTTAA



[View online »](#)

Protein Sequence: >RG200514 representing NM_020317
 Red=Cloning site Green=Tags(s)

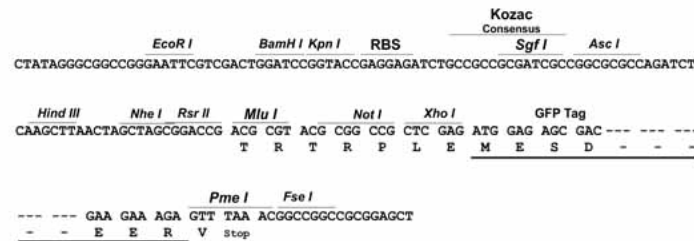
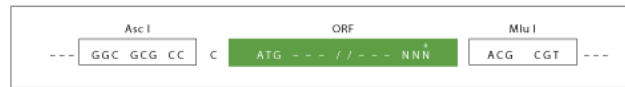
MSNYVNDMWPQSPQEKDPSPTSRSGGSSRLSSRSRSRFSRSSRSRSHRVSSRFSSRSRRSKRSRSRRRH
 QRKYRRYSRSYSRSRSRSRRRYRERRYGFTRYYRSPSRYSRSRSRSRGRSYCGRAYAIARGQRY
 GFGRTVYPEEHSRWRDRSRTRSRRTPFRLSEKDRMELLEIAKTNAAKALGTTNIDLPAASLRTVPSAKET
 SRGIGVSSNGAKPELSEKVTEDGTRNPNKPTQQRSIAFSSNNSVAKPIQKSAKAATEEASRSRSPKIDQK
 KSPYGLWIPI

TRTRPLE - GFP Tag - V

Restriction Sites: AscI-MluI

Cloning Scheme:

Cloning sites used for ORF Shuttling:



ACCN: NM_020317

ORF Size: 870 bp

OTI Disclaimer: The molecular sequence of this clone aligns with the gene accession number as a point of reference only. However, individual transcript sequences of the same gene can differ through naturally occurring variations (e.g. polymorphisms), each with its own valid existence. This clone is substantially in agreement with the reference, but a complete review of all prevailing variants is recommended prior to use. [More info](#)

OTI Annotation: This clone was engineered to express the complete ORF with an expression tag. Expression varies depending on the nature of the gene.

Components: The ORF clone is ion-exchange column purified and shipped in a 2D barcoded Matrix tube containing 10ug of transfection-ready, dried plasmid DNA (reconstitute with 100 ul of water).

Reconstitution Method:

1. Centrifuge at 5,000xg for 5min.
2. Carefully open the tube and add 100ul of sterile water to dissolve the DNA.
3. Close the tube and incubate for 10 minutes at room temperature.
4. Briefly vortex the tube and then do a quick spin (less than 5000xg) to concentrate the liquid at the bottom.
5. Store the suspended plasmid at -20°C. The DNA is stable for at least one year from date of shipping when stored at -20°C.

RefSeq: [NM_020317.2](#)

RefSeq Size: 1482 bp

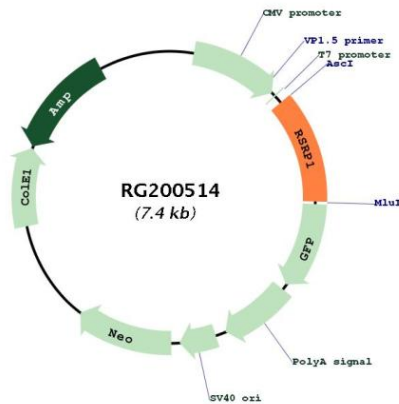
RefSeq ORF: 873 bp

Locus ID: 57035

UniProt ID: [Q9BUV0](#)

Cytogenetics: 1p36.11

Product images:



Circular map for RG200514