

## Product datasheet for **RG200489**

### CLK3 (NM\_003992) Human Tagged ORF Clone

#### Product data:

Product Type:	Expression Plasmids
Product Name:	CLK3 (NM_003992) Human Tagged ORF Clone
Tag:	TurboGFP
Symbol:	CLK3
Synonyms:	PHCLK3; PHCLK3/152
Mammalian Cell Selection:	Neomycin
Vector:	pCMV6-AC-GFP (PS100010)
E. coli Selection:	Ampicillin (100 ug/mL)



[View online »](#)

**ORF Nucleotide Sequence:**

>RG200489 representing NM\_003992  
 Red=Cloning site Blue=ORF Green=Tags(s)

GACGTTGTATACGACTCCTATAGGGCGGCCGGAATTCGTCGACTGGATCCGGTACCGAGGAGATCTGCC  
 GCCGGCGCGCC

ATGCATCACTGTAAGCGATACCGCTCCCCTGAACCAGACCCGTACCTGAGCTACCGATGGAAGAGGAGGA  
 GGTCTACAGTCGGGAACATGAAGGGAGACTGCGATACCCGTCCCGAAGGGAGCCTCCCCACGAAGATC  
 TCGGTCCAGAAGCCATGACCGCCTGCCCTACCAGAGGAGGTACCGGGAGCGCCGTGACAGCGATACATAC  
 CGGTGTGAAGAGCGGAGCCCATCCTTTGGAGAGGACTACTATGGACCTTCACGTTCTCGTCATCGTCGGC  
 GATCGGGGAGAGGGGCCATACCGGACCCGCAAGCATGCCACCACTGCCACAAACGCCGACCAGGTC  
 TTGTAGCAGCGCCTCTCGAGAAGCCAACAGAGCAGTAAGCGCACAGGCCGAGTGTGGAAGATGACAAG  
 GAGGGTCACTGGTGTGCCGATCGCGATTGGCTCCAAGAGCGATATGAGATTGTGGGGAACCTGGGTG  
 AAGGCACCTTTGGCAAGGTGGTGGAGTGTGGACCATGCCAGAGGGAAGTCTCAGTTGCCCTGAAGAT  
 CATCCGCAACGTGGCAAGTACCGGGAGGCTGCCCGCTAGAAATCAACGTGCTCAAAAAATCAAGGAG  
 AAGGACAAAGAAAACAAGTTCCTGTGTGCTTGTGATGCTGACTGGTTCAACTCCACGGTACATGTGCA  
 TCGCCTTTGAGCTCCTGGCAAGAACACCTTTGAGTTCCTGAAGGAGAATAACTCCAGCCTTACCCCT  
 ACCACATGTCCGGACATGGCCTACCAGCTCTGCCACGCCCTTAGATTTCTGCATGAGAATCAGCTGACC  
 CATAAGACTTGAACCTGAGAACATCCTGTTTGTGAATTCTGAGTTTGAACCTCTACAATGAGCACA  
 AGAGCTGTGAGGAGAAGTCAGTGAAGAACCAGCATCCGAGTGGCTGACTTTGGCAGTGCCACATTTGA  
 CCATGAGCACCACACCACATTGTGGCCACCCGCTACTATCGCCCGCCTGAGGTGATCCTTGAGCTGGGC  
 TGGGCACAGCCCTGTGACGTCTGGAGCATTGGCTGCATTCTTTGAGTACTACCGGGGCTTCACACTCT  
 TCCAGACCCACGAAAACCGAGAGCACCTGGTGATGATGGAGAAGATCCTAGGGCCATCCCACACAT  
 GATCCACCGTACCAGGAAGCAGAAATATTTCTACAAGGGGGCCTAGTTTGGGATGAGAACAGCTCTGAC  
 GGCCGGTATGTGAAGGAGAACTGCAACCTCTGAAGATTACATGCTCCAAGACTCCCTGGAGCAGTGC  
 AGCTGTTTGACCTGATGAGGAGGATGTTAGAATTTGACCTGCCAGCGCATCAGCTGGCCGAGGCCCT  
 GCTGCACCCCTTCTTTGCTGGCCTGACCCTGAGGAGCGGTCTTCCACACCAGCCGCAACCCAAGCAGA

ACGCGTACGCGGCCGCTCGAG - GFP Tag - GTTTAA

**Protein Sequence:**

>RG200489 representing NM\_003992  
 Red=Cloning site Green=Tags(s)

MHHCKRYRSPDPYLSYRWKRRRSYSREHEGRLRYPSPREPPRRSRSRSHDRLPYQRRYRERDSDTY  
 RCEERSPSFGEDYYGSPSRHRRRSRERGPYRTRKHAHHCHKRRTRSCSSASSRSQSSKRTGRSVEDDK  
 EGHLCRIGDWLQERYEIVGNLGEFTFGKVVVECLDHARGKSQVALKIIRNVGKYREARLEINVLKKIKE  
 KDKENKFLCVLMSDFNFHGHMCI AFELLGKNTFEFLKENNFQPYPLPHVRHMAYQLCHALRFLHENQLT  
 HTDLKPENILFVNSEFETLYNEHKSCEEKSVKNTSIRVADFGSATFDHEHHTTIVATRHYRPPVILELG  
 WAQPCDVWSIGCILFEYRGTFLFQTHENREHLVMEKILGPIPSHMIHRTRKQKYFYKGLVWDENSSD  
 GRVYKENCNPKLSYMLQDSLEHVQLFDLMRRMLEFDPAQRITLAEALLHPFFAGLTPEERSFHTSRNPSR

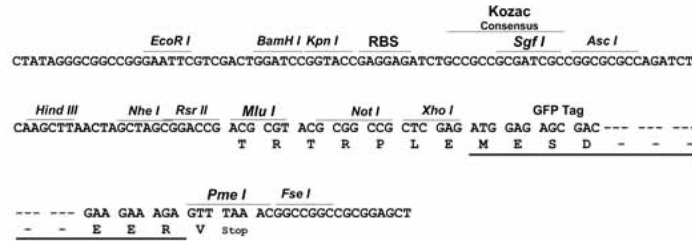
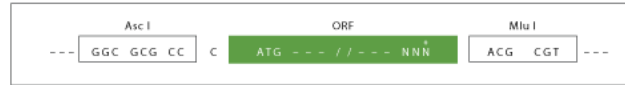
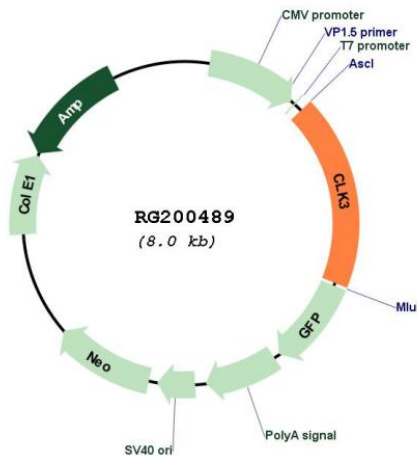
TRTRPLE - GFP Tag - V

**Restriction Sites:**

Ascl-MluI

**Cloning Scheme:**

Cloning sites used for ORF Shuttling:


**Plasmid Map:**

**ACCN:** NM\_003992

**ORF Size:** 1470 bp

**OTI Disclaimer:** The molecular sequence of this clone aligns with the gene accession number as a point of reference only. However, individual transcript sequences of the same gene can differ through naturally occurring variations (e.g. polymorphisms), each with its own valid existence. This clone is substantially in agreement with the reference, but a complete review of all prevailing variants is recommended prior to use. [More info](#)
**OTI Annotation:** This clone was engineered to express the complete ORF with an expression tag. Expression varies depending on the nature of the gene.

**Components:** The ORF clone is ion-exchange column purified and shipped in a 2D barcoded Matrix tube containing 10ug of transfection-ready, dried plasmid DNA (reconstitute with 100 ul of water).

**Reconstitution Method:**

1. Centrifuge at 5,000xg for 5min.
2. Carefully open the tube and add 100ul of sterile water to dissolve the DNA.
3. Close the tube and incubate for 10 minutes at room temperature.
4. Briefly vortex the tube and then do a quick spin (less than 5000xg) to concentrate the liquid at the bottom.
5. Store the suspended plasmid at -20°C. The DNA is stable for at least one year from date of shipping when stored at -20°C.

**RefSeq:** [NM\\_003992.1](#), [NP\\_003983.1](#)

**RefSeq Size:** 1863 bp

**RefSeq ORF:** 1473 bp

**Locus ID:** 1198

**UniProt ID:** [P49761](#)

**Cytogenetics:** 15q24.1

**Domains:** pkinase, TyrKc, S\_TKc

**Protein Families:** Druggable Genome, Protein Kinase

**Gene Summary:** This gene encodes a protein belonging to the serine/threonine type protein kinase family. This protein is a nuclear dual-specificity kinase that regulates the intranuclear distribution of the serine/arginine-rich (SR) family of splicing factors. Two transcript variants encoding different isoforms have been found for this gene. Related pseudogenes are located on chromosomes 1 and 9. [provided by RefSeq, Jul 2008]