

Product datasheet for **RG200477**

FOXO1 (NM_002015) Human Tagged ORF Clone

Product data:

Product Type:	Expression Plasmids
Product Name:	FOXO1 (NM_002015) Human Tagged ORF Clone
Tag:	TurboGFP
Symbol:	FOXO1
Synonyms:	FKH1; FKHR; FOXO1A
Mammalian Cell Selection:	Neomycin
Vector:	pCMV6-AC-GFP (PS100010)
E. coli Selection:	Ampicillin (100 ug/mL)



[View online »](#)

**ORF Nucleotide
Sequence:**

>RG200477 representing NM_002015
 Red=Cloning site Blue=ORF Green=Tags(s)

CTATAGGGCGGCCGGAATTCGTCTGACTGGATCCGGTACCGAGGAGATCTGCC
 GCC**CGGATCGCC**

ATGGCCGAGGCGCCTCAGGTGGTGGAGATCGACCCGACTTCGAGCCGCTGCCCCGCGCGCTCGTGCA
 CCTGGCCGCTGCCAGGCCGGAGTTTAGCCAGTCCAACCTCGGCCACCTCCAGCCCGCGCCGTGGGCAG
 CGCGGCTGCCAACCCCGACGCCCGCGGGGCTGCCCTCGGCTCGGCTGCCGCTGTGAGCGCGACTTC
 ATGAGCAACCTGAGCTTCTGGAGGAGAGCGAGGACTTCCCGCAGGCGCCCGGCTCCGTGGCGGGCGG
 TGGCGGGCGGCGCCGCCCGGCCACCGGGGGCTGTGCGGGGACTTCCAGGGCCCGAGGCGGGCTG
 CCTGCACCCAGCGCCACCGCAGCCCCCGCCCGGGCCGCTGTGCGAGCACCCGCGGTGCCCCCGCC
 GCCGCTGGGCCGCTCGCGGGCAGCCGCGCAAGAGCAGCTCGTCCGCGCAACCGTGGGGCAACCTGT
 CCTACGCCGACCTCATACCAAGGCCATCGAGAGCTCGGCGGAGAAGCGGCTCACGCTGTGCGAGATCTA
 CGAGTGGATGGTCAAGAGCGTGCCTACTTCAAGGATAAGGGTGACAGCAACAGCTCGGCGGGCTGGAAG
 AATTCAATTCTGTCATAATCTGTCCCTACACAGCAAGTTTATTCTGTGTCAGAATGAAGAACTGGAAAA
 GTTCTTGGTGGATGCTCAATCCAGAGGGTGGCAAGAGCGGAAATCTCTAGGAGAAGAGCTGCATCCAT
 GGACAACAACAGTAAATTTGCTAAGAGCCGAAGCCGAGCTGCCAAGAAGAAAGCATCTCTCCAGTCTGGC
 CAGGAGGGTGTGGGGACAGCCCTGGATCACAGTTTTTCCAAATGGCCTGCAAGCCCTGGCTCTCACAGCA
 ATGATGACTTTGATAACTGGAGTACATTTGCCCTCGAAGTACTCAAATGCTAGTACTATTAGTGGGAG
 ACTCTACCCATTATGACCGAACAGGATGATCTTGGAGAAGGGGATGTGCATTCTATGGTGTACCCGCCA
 TCTGCCCAAAGATGGCCTCTACTTTACCCAGTCTGTCTGAGATAAGCAATCCCGAAAACATGGAAAATC
 TTTTGGATAATCTCAACCTTCTCATCACCAACATCATTAACCTGTTTCGACCCAGTCTCACCTGGCAC
 CATGATGCAGCAGACGCCGTGCTACTCGTTTGCGCCACCAACACCAGTTTGAATTCACCCAGCCCAAC
 TACCAAAAATATACATATGGCCAATCCAGCATGAGCCCTTGGCCAGATGCCTATACAAAACACTTCAGG
 ACAATAAGTTCGAGTTATGGAGGTATGAGTCAGTATAACTGTGCGCCTGGACTCTTGAAGGAGTTGCTGAC
 TTCTGACTCTCTCCCAATAATGACATTATGACACCAGTTGATCCTGGGGTAGCCAGCCCAACAGCCGG
 GTTCTGGGCCAGAACGTCATGATGGGCCCTAATTCGGTTCATGTCAACCTATGGCAGCCAGGCATCTCATA
 AAAAAATGATGAATCCCAGTCCCATACCCACCCTGGACATGCTCAGCAGACATCTGCAGTTAACGGGCG
 TCCCCTGCCCCACACGGTAAGCACCATGCCCCACACCTCGGGTATGAACCGCCTGACCAAGTGAAGACA
 CCTGTACAAGTGCCTCTGCCCCACCCATGCAGATGAGTGCCTGGGGGCTACTCTCCGTGAGCAGCT
 GCAATGGCTATGGCAGAAATGGGCCTTCTCCACCAGGAGAAGCTCCAAGTACTTGGATGGCATGTTTCAT
 TGAGCGCTTAGACTGTGACATGGAATCCATCATTTCGGAATGACCTCATGGATGGAGATACATTGGATTTT
 AACTTTGACAATGTGTTGCCCAACCAAGCTTCCACACAGTGTCAAGACAACGACACATAGCTGGGTGT
 CAGGC

CTCGAG – GFP Tag – GTTTAA

Protein Sequence: >RG200477 representing NM_002015
 Red=Cloning site Green=Tags(s)

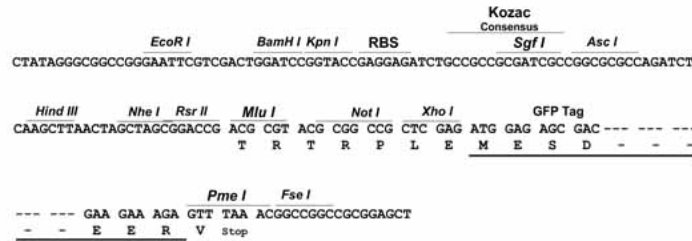
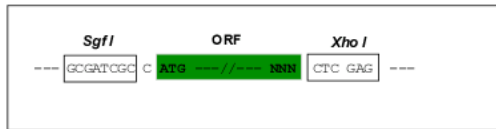
MAEAPQVVEIDPDFEPLPRPRSCWPLPRPEFSQNSATSSPAPSGSAAANPDAAAGLPSASAAAVSADF
 MSNLSLLEESDFPQAPGSVAAAATAAAAAAAAAATGGLCGDFQGPEAGLHPAPPQPPPPGPLSQHPPVPPA
 AAGPLAGQPRKSSSRNNAWGNLSYADLITKAIESSAEKRLTLSQIYEWVKSVPYFKDKGDSNSSAGWK
 NSIRHNL SLH SKF IRVQNEGTGKSSWMLNPEGKSGKSPRRRAASMDNNSKF AKSRRAAKKASLQSG
 QEGAGDSPGSQFSKWPASPGSHSND DFDNWSTFRPRTSSNASTISGR LSPIMTEQDDLGE G DVHSMVYPP
 SAAKMASTLPSLSEISNPENMENLLDNLNLLSSPTSLTVSTQSSPGTMMQQTPCYSFAPPNTSLNSPSPN
 YQKYTYGQSSMSPLPQMPIQTLQDNKSSYGGMSQYNCAPGLLKELLTSDSPPHNDIMTPVDPGVAQPNRS
 VLGQNVMMGPNSVMSTYGSQASHNKMMNPSSHTHPGHAQQTSAVNGRPLPHTVSTMPHTSGMNR L TQVK T
 PVQVPLPHPMQMSALGGYSSVSSCNGYGRMGLLHQEKLP S D L D G M F I E R L D C D M E S I I R N D L M D G D T L D F
 NFDNVLPNQSFPHSVKTTTHSWVSG

LE - GFP Tag - V

Restriction Sites: SgfI-XhoI

Cloning Scheme:

Cloning sites used for ORF Shuttling:

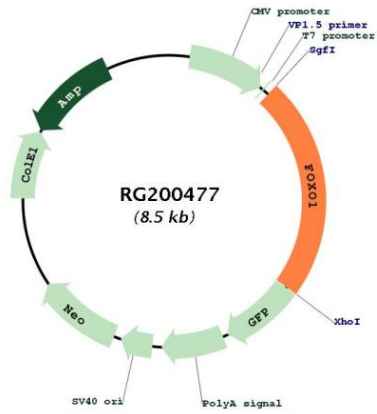


ACCN: NM_002015

ORF Size: 1965 bp

OTI Disclaimer:	Due to the inherent nature of this plasmid, standard methods to replicate additional amounts of DNA in E. coli are highly likely to result in mutations and/or rearrangements. Therefore, OriGene does not guarantee the capability to replicate this plasmid DNA. Additional amounts of DNA can be purchased from OriGene with batch-specific, full-sequence verification at a reduced cost. Please contact our customer care team at custsupport@origene.com or by calling 301.340.3188 option 3 for pricing and delivery.
	The molecular sequence of this clone aligns with the gene accession number as a point of reference only. However, individual transcript sequences of the same gene can differ through naturally occurring variations (e.g. polymorphisms), each with its own valid existence. This clone is substantially in agreement with the reference, but a complete review of all prevailing variants is recommended prior to use. More info
OTI Annotation:	This clone was engineered to express the complete ORF with an expression tag. Expression varies depending on the nature of the gene.
Components:	The ORF clone is ion-exchange column purified and shipped in a 2D barcoded Matrix tube containing 10ug of transfection-ready, dried plasmid DNA (reconstitute with 100 ul of water).
Reconstitution Method:	<ol style="list-style-type: none"> 1. Centrifuge at 5,000xg for 5min. 2. Carefully open the tube and add 100ul of sterile water to dissolve the DNA. 3. Close the tube and incubate for 10 minutes at room temperature. 4. Briefly vortex the tube and then do a quick spin (less than 5000xg) to concentrate the liquid at the bottom. 5. Store the suspended plasmid at -20°C. The DNA is stable for at least one year from date of shipping when stored at -20°C.
RefSeq:	NM_002015.4
RefSeq Size:	5723 bp
RefSeq ORF:	1968 bp
Locus ID:	2308
UniProt ID:	Q12778
Cytogenetics:	13q14.11
Domains:	FH
Protein Families:	Druggable Genome, Transcription Factors
Protein Pathways:	Insulin signaling pathway, Pathways in cancer, Prostate cancer
Gene Summary:	This gene belongs to the forkhead family of transcription factors which are characterized by a distinct forkhead domain. The specific function of this gene has not yet been determined; however, it may play a role in myogenic growth and differentiation. Translocation of this gene with PAX3 has been associated with alveolar rhabdomyosarcoma. [provided by RefSeq, Jul 2008]

Product images:



Circular map for RG200477