

Product datasheet for **RG200448**

Nectin (NDN) (NM_002487) Human Tagged ORF Clone

Product data:

Product Type:	Expression Plasmids
Product Name:	Nectin (NDN) (NM_002487) Human Tagged ORF Clone
Tag:	TurboGFP
Symbol:	Nectin
Synonyms:	HsT16328; PWCR
Mammalian Cell Selection:	Neomycin
Vector:	pCMV6-AC-GFP (PS100010)
E. coli Selection:	Ampicillin (100 ug/mL)
ORF Nucleotide Sequence:	>RG200448 representing NM_002487 Red=Cloning site Blue=ORF Green=Tags(s)

TTTTGTAATACGACTCACTATAGGGCGGCCGGAATTCGTCGACTGGATCCGGTACCGAGGAGATCTGCC
GCC**CGATCGCC**

ATGTCAGAACAAAGTAAGGATCTGAGCGACCCTAACTTTGCAGCCGAGGCCCACTCCGAGGTGCACA
GCAGCCCTGGGGTTTCGGAGGGGTTCTCCGTCGCGACCCTGGCAGAGCCGAGAGCCCTCCTTAGG
CCCGACGGCCGCTCCGCAGGCCGCGCCCTCCCAGGCCCGAACGACGAGGGCGACCCGAAGGCCCTG
CAGCAGGCTGCGGAGGAGGGCCGCCCCACCAGGCCCGAGCGGCCAGCCGGGCCCGCACCCGAC
CCCCGGCGCAGCTGGTGCAGAAGGCGCAGAGCTCATGTGGTACGTGCTGGTCAAGGACCAGAAGAAGAT
GATCATCTGGTTCCAGACATGGTGAAAGATGTACATCGGCAGCTACAAGAAGTGGTGCAGGAGCATCCTC
CGGCGCACCGCCTCATCCTCGCCCGGGTGTTCGGGCTGCACCTGAGGCTAACGACCTGCACACCATGG
AGTTTGCCTGGTCAAAGCGCTGGAGCCGAGGAGCTGGACAGGGTGGCGCTGAGCAACCGCATGCCAT
GACAGGCCCTCCTGCTCATGATCCTGAGCCTCATCTACGTGAAGGGCCGCGGCCAGAGAGAGCGCCGTC
TGAACGTGCTGCGCATCCTGGGCTGCGGCCCTGGAAGAAGCACTCCACCTTCGGGGACGTGCGGAAGC
TCATCACTGAGGAGTTCGTCAAATGAATTACCTGAAGTACCAGCGCTCCCATACGTGGAGCCGCCGA
ATACGAGTCTTTTGGGGCTCCCGGCCAGCCGAAATCACCAAGATGCAAATCATGGAGTTCCTGGCC
AGGGTCTTTAAGAAAGACCCCGAGCCTGGCCCTCCCGATACAGAGAAGCTCTGGAGGAGCCAGAGCTC
TGCGGGAGGCTAATCCCACTGCCCACTACCTCGCAGCAGTGTCTCTGAGGAC

ACGCGTACGCGGCCGCTCGAG - GFP Tag - GTTTAA



[View online »](#)

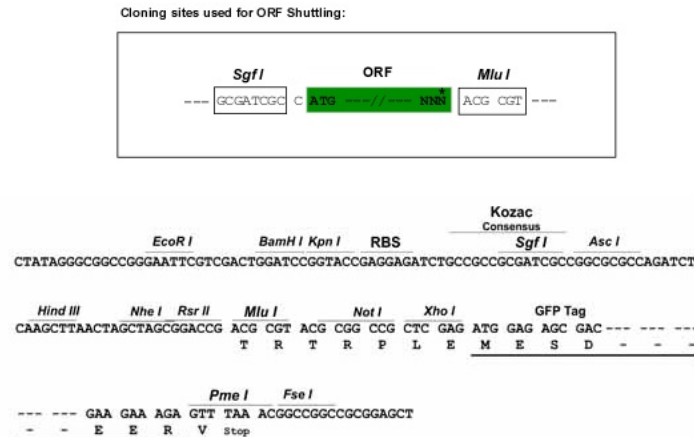
Protein Sequence: >RG200448 representing NM_002487
 Red=Cloning site Green=Tags(s)

MSEQSKDLSDPNFAAEAPNSEVHSSPGVSEGVPPSATLAEPQSPPLGPTAAPQAAPPPQAPNDEGDPKAL
 QQAAEEGRAHQAPSAAQPGPAPPAPAQLVQKAHELMWYVLVKDQKKMIWFPMVKDVIKSYKKWCRSIL
 RRTSLILARVFGHLRLTSLHTMEFALVKALEPEELDRVALSNRMPMTGLLLMILSLIYVKGRGARESAV
 WNVLRILGLRPWKKHSTFGDVRKLIITEEFVQMNYLKYQRVYPYVEPPEYEFWGSRASREITKMQIMEFLA
 RVFKKDPQAWPSRYREALLEEARLREANPTAHYPRSSVSED

TRTRPLE - GFP Tag - V

Restriction Sites: SgfI-MluI

Cloning Scheme:



ACCN: NM_002487

ORF Size: 963 bp

OTI Disclaimer: The molecular sequence of this clone aligns with the gene accession number as a point of reference only. However, individual transcript sequences of the same gene can differ through naturally occurring variations (e.g. polymorphisms), each with its own valid existence. This clone is substantially in agreement with the reference, but a complete review of all prevailing variants is recommended prior to use. [More info](#)

OTI Annotation: This clone was engineered to express the complete ORF with an expression tag. Expression varies depending on the nature of the gene.

Components: The ORF clone is ion-exchange column purified and shipped in a 2D barcoded Matrix tube containing 10ug of transfection-ready, dried plasmid DNA (reconstitute with 100 ul of water).

Reconstitution Method:

1. Centrifuge at 5,000xg for 5min.
2. Carefully open the tube and add 100ul of sterile water to dissolve the DNA.
3. Close the tube and incubate for 10 minutes at room temperature.
4. Briefly vortex the tube and then do a quick spin (less than 5000xg) to concentrate the liquid at the bottom.
5. Store the suspended plasmid at -20°C. The DNA is stable for at least one year from date of shipping when stored at -20°C.

RefSeq: [NM_002487.3](#)

RefSeq Size: 1897 bp

RefSeq ORF: 966 bp

Locus ID: 4692

UniProt ID: [Q99608](#)

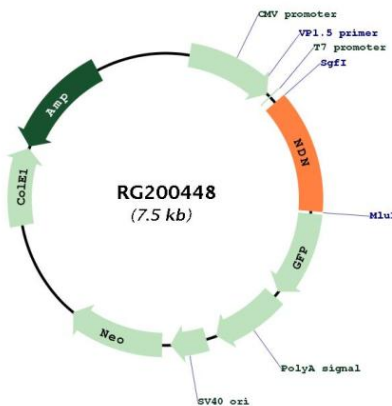
Cytogenetics: 15q11.2

Domains: MAGE

Protein Families: Druggable Genome, Transcription Factors

Gene Summary: This intronless gene is located in the Prader-Willi syndrome deletion region. It is an imprinted gene and is expressed exclusively from the paternal allele. Studies in mouse suggest that the protein encoded by this gene may suppress growth in postmitotic neurons. [provided by RefSeq, Jul 2008]

Product images:



Circular map for RG200448