

Product datasheet for **RG200366**

ETV5 (NM_004454) Human Tagged ORF Clone

Product data:

Product Type:	Expression Plasmids
Product Name:	ETV5 (NM_004454) Human Tagged ORF Clone
Tag:	TurboGFP
Symbol:	ETV5
Synonyms:	ERM
Mammalian Cell Selection:	Neomycin
Vector:	pCMV6-AC-GFP (PS100010)
E. coli Selection:	Ampicillin (100 ug/mL)



[View online »](#)

ORF Nucleotide Sequence:

>RG200366 representing NM_004454
 Red=Cloning site Blue=ORF Green=Tags(s)

TTTTGTAATACGACTCACTATAGGGCGGCCGGAATTCGTCGACTGGATCCGGTACCGAGGAGATCTGCC
 GCC**CGGATCGCC**

ATGGACGGGTTTTATGATCAGCAAGTCCCTTTTATGGTCCAGGAAATCTCGATCTGAGGAATGCAGAG
 GCGGCCCTGTGATTGACAGAAAGAGGAAGTTTTGGACACAGATCTGGCTCACGATTCTGAAGAGCTATT
 TCAGGATCTCAGTCAACTCAAGAGGCTTGTTAGCTGAAGCACAAAGTTCCTGATGATGAACAGTTTGTG
 CCAGATTTTCACTGCTGATAACCTGGTGTCTCATGCCCCACCTCCAACCAAGATCAAACGGGAGCTGCACA
 GCCCTCTCTGAGCTGTCGTCTGTAGCCATGAGCAGGCTCTTGGTGTAACTATGGAGAAAAGTGCCT
 CTACAATATTGTGCTATGATAGGAAGCCTCCCTCTGGGTTCAAGCCATTAACCCCTCTACAACCCCT
 CTCTACCCACCCATCAGAATCCCCTATTTCCCCACCTCAGGCAACTCTGCCACCTCAGGGCATGCC
 CTGCAGCTGGCCAGTTCAAGGTGTGGCCCCGCCGCCGCCATTGCTTCCAGAGCCTGGACCACA
 GCAGCAAACATTTGCGGTCCCCGACCACCACATCAGCCCTGCAGATGCCAAAGATGATGCCTGAAAAC
 CAGTATCCATCAGAACAGAGATTTAGAGACAAGTGTCTGAACCTGCCACCCCTCCCTCTCAGCCAG
 GAGTTCCTGGAGATAATCGCCCCAGTTACCATCGGCAATGTCAGAACCTATTGTCCCTGCAGCTCCCC
 GCCCCCTCAGGGATCAACAAGAATACCATGACCCACTATGAACATGGGGTCCCGGGCATGCCAGGG
 CCCCCAGCACACGGGTTCCAGTCAACATGGGAATCAAGCAGGAGCCTCGGGATTACTGCGTGCATTGAG
 AAGTGCCTAACTGCCAGTCACTACATGAGAGGGGTTATTTCTCCAGCAGCCATGAAGTTTTTCATA
 TGAAAAGATCCCCGATTATACTTTGACGACACTTGTGTTGTGCTGAGAGACTGGAAGGCAAAGTCAA
 CAGGAGCCTACCATGTATCGAGAGGGGCCCTTACCAGAGCGAGGTTCCCTTCAGCTGTGGCAGTTCC
 TGGTACCCTTCTGATGACCCAGCCAATGCCACTTCAATTGCCCTGGACAGGTCGAGGATGGAATGCA
 GCTGATAGAACCAGGAGGTTGCTCGGCCTGGGGCATCCAGAAGAACCAGCCAGCCATGAACTATGAC
 AAGCTGAGCCGCTCTCTCCGCTATTACTATGAAAAGGCATCATGCAGAAGTGGCTGGAGAGCGATACG
 TCTACAAATTTGTCTGTGACCCAGATGCCTCTTCCATGGCTTTCCCGGATAACCAGCGTCCGTTCT
 GAAGGCAGAGTCCGAGTCCACCTCAGCGAGGAGGACACCCTGCCGCTGACCCACTTTGAAGACAGCCCC
 GCTTACCTCTGGACATGGACCGCTGCAGCAGCCTCCCTATGCCGAAGGCTTTGCTTAC

ACGGTACGGCGCCGCTCGAG – GFP Tag – GTTTAA

Protein Sequence:

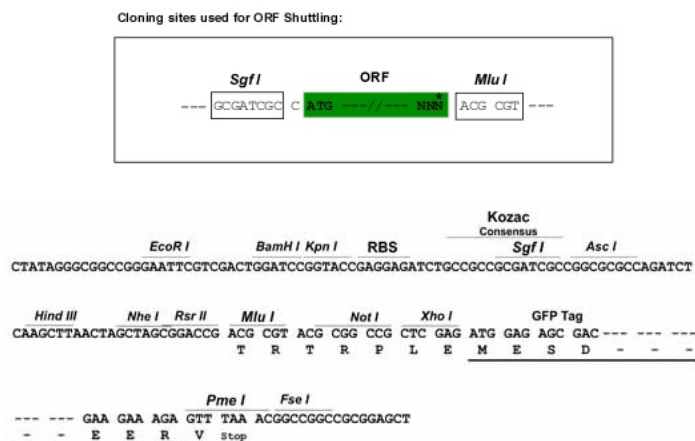
>RG200366 representing NM_004454
 Red=Cloning site Green=Tags(s)

MDGFYDQQVPMVPGKSRSEECRGPVIDRKRKFLDTDLAHDSEELFQDLSQLQEAWLAEAVPDDQFV
 PDFQSDNLVLAHPPPTKIKRELHSPSELSSCSHEQALGANYGEKCLYNYCAYDRKPPSGFKLTPPTTP
 LSPHQNLFPQQATLPTSGHAPAAGPVQGVGPAPAPHSLEPEGPQQTFVAVRPPHQPLQMPKMPEN
 QYPSEQRFRQLSEPCHPFPQPGVPGDNRPSYHRQMSEPIVPAAPPPPQGFQYHDPLEYHGVGMPG
 PPAHGFQSPMGIKQEPRDYCVDSEVPCQSSYMRGGYFSSSHEGFSEYKDPRLYFDDTCVPERLEGKVK
 QEPTMYREGPPYQRRGSLQLWQFLVTLDDPANAHFIAWTGRGMEFKLIEPEEVARRWGIQKRPAMNYD
 KLSRSLRYYYEKIMQKVAGERYVYKFVCDPDLFMAFPDNRPFLLKAESECHLSEEDTLPLTHFEDSP
 AYLLDMDRCSSLPYAEAFAY

TRTRPLE – GFP Tag – V

Restriction Sites:

Sgfl-MluI

Cloning Scheme:


ACCN: NM_004454

ORF Size: 1530 bp

OTI Disclaimer: The molecular sequence of this clone aligns with the gene accession number as a point of reference only. However, individual transcript sequences of the same gene can differ through naturally occurring variations (e.g. polymorphisms), each with its own valid existence. This clone is substantially in agreement with the reference, but a complete review of all prevailing variants is recommended prior to use. [More info](#)

OTI Annotation: This clone was engineered to express the complete ORF with an expression tag. Expression varies depending on the nature of the gene.

Components: The ORF clone is ion-exchange column purified and shipped in a 2D barcoded Matrix tube containing 10ug of transfection-ready, dried plasmid DNA (reconstitute with 100 ul of water).

Reconstitution Method:

1. Centrifuge at 5,000xg for 5min.
2. Carefully open the tube and add 100ul of sterile water to dissolve the DNA.
3. Close the tube and incubate for 10 minutes at room temperature.
4. Briefly vortex the tube and then do a quick spin (less than 5000xg) to concentrate the liquid at the bottom.
5. Store the suspended plasmid at -20°C. The DNA is stable for at least one year from date of shipping when stored at -20°C.

RefSeq: [NM_004454.3](#)

RefSeq Size: 4071 bp

RefSeq ORF: 1533 bp

Locus ID: 2119

UniProt ID: [P41161](#)

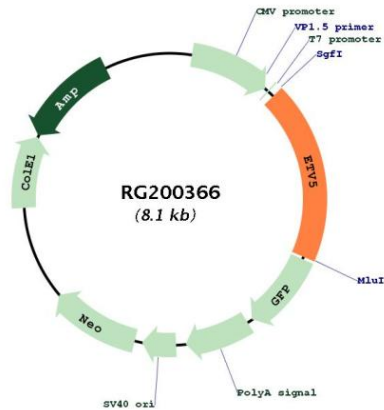
Cytogenetics: 3q27.2

Domains: ETS, ETS_PEA3_N

Protein Families: Transcription Factors

Gene Summary: Binds to DNA sequences containing the consensus nucleotide core sequence 5'-GGAA.-3'.
[UniProtKB/Swiss-Prot Function]

Product images:



Circular map for RG200366