

## Product datasheet for **RG200357**

### NFAT4 (NFATC3) (NM\_173165) Human Tagged ORF Clone

#### Product data:

Product Type:	Expression Plasmids
Product Name:	NFAT4 (NFATC3) (NM_173165) Human Tagged ORF Clone
Tag:	TurboGFP
Symbol:	NFATC3
Synonyms:	NF-AT4c; NFAT4; NFATX
Vector:	pCMV6-AC-GFP (PS100010)
E. coli Selection:	Ampicillin (100 ug/mL)
Cell Selection:	Neomycin
ORF Nucleotide Sequence:	>RG200357 representing NM_173165 Red=Cloning site Blue=ORF Green=Tags(s)

TTTTGTAATACGACTCACTATAGGGCGGCCGGGAATTCGTCGACTGGATCCGGTACCGAGGAGATCTGCC  
GCC**GCGATCGC**C

ATGACTACTGCAAACGTGGCGCCACGACGAGCTCGACTTCAAACGTCGCTTTGGCGAGGACGGGGCGC  
CGGCGCCGCCCGGGCTCGCGGCCTGCAGATCTTGAGCCAGATGATTGTGCATCCATTTACATCTT  
TAATGTAGATCCACCTCCATCTACTTTAACCACACCACCTTTGCTTACCACATCATGGATTACCGTCTCAC  
TCTTCTGTTTTGTCAACATCGTTTCAGCTCCAAAGTCACAAAACTATGAAGGAACTTGTGAGATTCCTG  
AATCTAAATATAGCCATTAGGTGGTCCAAACCCTTTGAGTGCCCAAGTATTCAAATTACATCTATCTC  
TCCTAACTGTCATCAAGAATTAGATGCACATGAAGATGACCTACAGATAAATGACCCAGAACGGGAATTT  
TTGAAAGGCCTTCTAGAGATCATCTCTATCTTCTCTTGAGCCATCCTACCGGGAGTCTTCTCTTAGTC  
CTAGTCTGCCAGCAGCATCTCTTAGGAGTTGGTCTCTGATGCATCTTCTTGTGAATCGCTTTCACA  
TATTTATGATGATGTGGACTCAGAGTTGAATGAAGCTGCAGCCGATTTACCCTTGGATCCCCTCTGACT  
TCTCCTGGTGGCTCTCCAGGGGCTGCCCTGGAGAAGAACTTGGCATCAACAGTATGGACTGGACACT  
CATTATCACCCAGGCAATCTCCTTGCCACTCTCCTAGATCCAGTGTCACTGATGAGAATTGGCTGAGCCC  
CAGGCCAGCCTCAGGACCCTCATCAAGGCCACATCCCCTGTGGGAAACGGAGGCACTCCAGTGTGAA  
GTTTGTATGCTGGGTCCCTTTACCCCATCACTCACCTGTTCCCTTACCTGGTCACTCCCCAGGGGAA  
GTGTGACAGAAGATACGTGGCTCAATGCTTCTGTCCATGGTGGGTGAGGCCTTGGCCCTGCAGTTTTTCC  
ATTTCACTACTGTGTAGAGACTGACATCCCTCTCAAAACAAGGAAACTTCTGAAGATCAAGCTGCCATA  
CTACCAGGAAATTAGAGCTGTGTTAGATGACCAAGGGAGTTTATCACCAGCCCGGAGACTTCAATAG  
ATGATGGCCTTGGATCTCAGTATCCTTTAAAGAAAGATTATGTGGTGATCAGTTTCTTTCAAGTTCCTC  
ACCCTTACCTGGAGCAAACCAAAGCCTGGCCACACCCTATATTTTCGCACATCTTCATTACCTCCACTA  
GACTGGCCTTTACCAGCTCATTTTGGACAATGTGAAGTGAAGTGAAGTGAAGTGAAGTGAAGTGAAGTGAAGT  
GAGCCATTATGAACTGAAGGTAGCCGAGGGGAGTAAAGCATCTACTGGGGGACATCCTGTTGTGAA  
GCTCCTGGGCTATAACGAAAAGCCAATAAATCTACAAATGTTTATTGGGACAGCAGATGATCGATATTTA  
CGACCTCATGATTTTACCAGGTGCATCGAATCACTGGGAAGACAGTCGCTACTGCAAGCCAAGAGATAA



View online »

TAATTGCCAGTACAAAAGTTCTGGAAATTCACCTTCTTCTGAAAATAATATGTCAGCCAGTATTGATTG  
 TGCAGGTATTTTAAAACCTCCGCAATTCAGATATAGAACTTCGAAAAGGAGAAAAGTATTTGGCAGAAAAG  
 AATACTAGAGTACGACTTGTGTTTCGTGTACACATCCCACAGCCAGTGGAAAAGTCTTTCTCTGCAGA  
 TAGCCTCTATACCCGTTGAGTGTCCCAGCGGTCTGCTCAAGAACTTCCATATTTGAGAAGTACAGTAT  
 CAACAGTTGTTCTGTAATGGAGGTCAAGAAATGGTTGACTGGATCTAATTTTCTCCAGAATCCAAA  
 ATCATTTTTCTGAAAAGGACAAGATGGACGACCTCAGTGGGAGGTAGAAGGGAAGATAATCAGGGAAA  
 AATGTCAAGGGGCTCACATTGTCCTTGAAGTTCCTCCATATCATACCCAGCAGTTACAGCTGCAGTGCA  
 GGTGCACTTTTATCTTTGCAATGGCAAGGAAAAAAGCCAGTCTCAACGTTTTACTTATACACCAAGTT  
 TTGATGAAGCAAGAACACAGAGAAGAGATTGATTTGTCTTCAGTTCATCTTTGCCTGTGCCTCATCCTG  
 CTCAGACCCAGAGGCCTTCTCTGATTGAGGTGTTTACATGACAGTGTACTGTCAGGACAGAGAAGTTT  
 GATTTGCTCCATCCCACAAACATATGCATCCATGGTGACCTCATCCCCTGCCACAGTTGCAGTGTAGA  
 GATGAGAGTGTAGTAAAGAACAGCATATGATTCTTCTCCAATTGTACACCAGCCTTTTCAAGTACAC  
 CAACACCTCTGTGGGTCTTCTATCAGCCTATGCAAACTAATGTTGTGTACAATGGACCAACTGTCT  
 TCCTATTAATGCTGCCTTAGTCAAGAATTTGATTGAGTTTTGTTTTCAGCAGGATGCAACTCTTTCTGGT  
 TTAGTGAATCTTGGCTGTCAACCACTGTATCCATACCATTTTCTTCAAATTCAGGCTCAACAGGAC  
 ATCTCTTAGCCATACACCTCATTCTGTGCATACCTGCCTCATCTGCAATCAATGGGATATCATTGTTT  
 AAATACAGGACAAAGATCTTTTCTTCTCCAGTGGCTGACCAGATTACAGGTGAGCCTTCGTCTCAGTTA  
 CAACCTATTACATATGGTCTTACATTCAGGGTCTGCTACAACAGCTTCCCCAGCAGCTTCTCATCCCT  
 TGGCTAGTTACCCGCTTCTGGGCCACCATCTCCTCAGCTTACGCTTACGCTTACCAATCTCCTAGCTC  
 AGGAACTGCCTCATCACCGTCTCCAGCCACCAGAATGCATTCTGGACAGCACTCAACTCAAGCACAAAGT  
 ACGGGCCAGGGGGTCTTCTGCACCTTATCCTTAATATGTCACAGTTTGTGTGATCCAGCGTCATTTT  
 CACCTGATGGGCAACTGTGAGCATTAACTGAACGAGAATCGAGAGCCTAACTTTGCAACCATTGG  
 TCTGCAGGACATCACTTTAGATGATGTGAACGAGATAAATGGGAGAGACATGTCCAGATTTCTGTTTCC  
 CAAGGAGCAGGGGTGAGCAGGACGGCTCCCCTCCGAGTCTGAGTCCCTGGATTAGGAAGATCTGATG  
 GGCTC

ACGCGTACGCGGCGCTCGAG - GFP Tag - GTTTAA

Protein Sequence:

>RG200357 representing NM\_173165  
 Red=Cloning site Green=Tags(s)

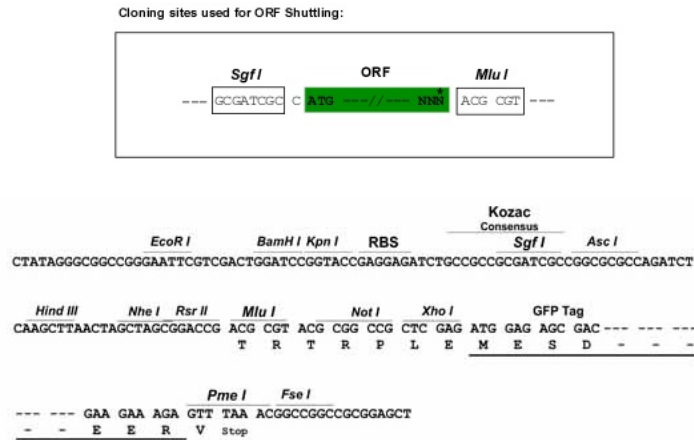
MTTANCGAHDELDFKL VFGEDGAPAPPPGSRPADLEPDDCASIIYFNVDPPPSTLTTPLCLPHHGLPSH  
 SSVLSPSFQLQSHKNYEGTCEIPESKYSPLGGPKPFECPSIQITISIPNCHQELDAHEDDLQINDPEREF  
 LERPSRDHL YLPLEPSYRESSLSPSPASSISSRSWFS DASSCESLSHIYDDVDSELNEAAARFTLGSPLT  
 SPGGSPGGCPGEETWHQQYGLGHSLSPRQSPCHSPRSSVTDENWLSRPASGSPSSRPTSPCGKRRHSSAE  
 VCYAGSLSPHSPVPSPGHSPRGSVTEDTWLNASVHGGSGLGPVFPFQYCVETDIPLKTRKTSSEQAAI  
 LPGKLELCSDDQGSLS PARETSIDDLGSGQYPLKKDSCGDQFLSVPSPFTWSKPKPGHTPIFRTSSLPPL  
 DWPLPAHFQGCCELKIEVQPKTHHRAHYETEGSRGAVKASTGGHPVVKLLGYNEKPINLQMFIGTADDRYL  
 RPHAFYQVHRITGKT VATASQEI IIASTKVLEIPLLPENMSASIDCAGILKLRNSDIELRKGETDIGRK  
 NTRVRLVFRVHIPQPSGKVL SLQIASIPVECSQRSAQELPHIEKYSINSCSVNGGHEMVVTSNFLPESK  
 IIFLEKQDGRPQWEVEGKI IIREKCGAHIVLEVPPYHNPVAVTA AVQVHFYLCNGKRKKSQSQRFTYTPV  
 LMKQEHREEIDLSSVPSLPVPHPAQTQRPSSDSGCSHDSVLSGQRSLICSIPTQYASMTSSHLPLQLQCR  
 DESVSKEQHMIQSPIVHQPFQVPTPPVSSYQPMQTNVVYNGPTCLPINAASSQEFDSVLFQDQATLSG  
 LVNLGCQPLSSIPFHSSNSGSGTHLLAHTPHSVHTLPHLQSMGYHCSNTGQRSLSSPVADQITGQPSQL  
 QPITYGPHSHSGSATTASPAASHPLASSPLSGPPSPQLQPMYQSPSSGTASSPSPATRMHSGQHSQAQS  
 TGQGLSAPSSLI CHSLCDPASFPDPGATVSIKPEPEDREPNFATIGLQDITLDDVNEIIGRDMSQISVS  
 QGAGVSRQAPLPSPEL DLGRSDGL

TRTRPLE - GFP Tag - V

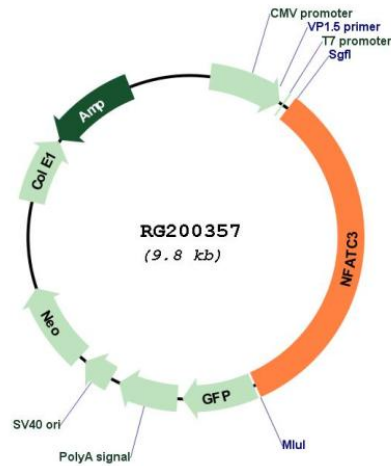
Restriction Sites:

SgfI-MluI

Cloning Scheme:



Plasmid Map:



ACCN: NM\_173165

ORF Size: 3225 bp

OTI Disclaimer: The molecular sequence of this clone aligns with the gene accession number as a point of reference only. However, individual transcript sequences of the same gene can differ through naturally occurring variations (e.g. polymorphisms), each with its own valid existence. This clone is substantially in agreement with the reference, but a complete review of all prevailing variants is recommended prior to use. [More info](#)

OTI Annotation: This clone was engineered to express the complete ORF with an expression tag. Expression varies depending on the nature of the gene.

RefSeq:	<u>NM_173165.1, NP_775188.1</u>
RefSeq Size:	3901 bp
RefSeq ORF:	3228 bp
Locus ID:	4775
Cytogenetics:	16q22.1
Protein Families:	Druggable Genome, Transcription Factors
Protein Pathways:	Axon guidance, B cell receptor signaling pathway, Natural killer cell mediated cytotoxicity, T cell receptor signaling pathway, VEGF signaling pathway, Wnt signaling pathway
Gene Summary:	The product of this gene is a member of the nuclear factors of activated T cells DNA-binding transcription complex. This complex consists of at least two components: a preexisting cytosolic component that translocates to the nucleus upon T cell receptor (TCR) stimulation and an inducible nuclear component. Other members of this family participate to form this complex also. The product of this gene plays a role in the regulation of gene expression in T cells and immature thymocytes. Several transcript variants encoding distinct isoforms have been identified for this gene. [provided by RefSeq, Nov 2010]