

Product datasheet for **RG200318**

ZNF256 (NM_005773) Human Tagged ORF Clone

Product data:

| | |
|---------------------------|---|
| Product Type: | Expression Plasmids |
| Product Name: | ZNF256 (NM_005773) Human Tagged ORF Clone |
| Tag: | TurboGFP |
| Symbol: | ZNF256 |
| Synonyms: | BMZF-3; BMZF3 |
| Mammalian Cell Selection: | Neomycin |
| Vector: | pCMV6-AC-GFP (PS100010) |
| E. coli Selection: | Ampicillin (100 ug/mL) |



[View online »](#)

ORF Nucleotide Sequence:

>RG200318 representing NM_005773
 Red=Cloning site Blue=ORF Green=Tags(s)

TTTTGTAATACGACTCACTATAGGGCGGCCGGGAATTCGTCGACTGGATCCGGTACCGAGGAGATCTGCC
 GCC**CGGATCGCC**

ATGGCGCGGCCGAGCTGACGGCCCCGCCAGGGCATTGTGACCTTTGAGGACGTGGCTGTTTACTTCT
 CCTGGAAGGAATGGGTCTTCTTGATGAGGCTCAGAAATGCCTGTACCACGATGTGATGCTGGAGA
 GACTTACAACCTCCCTGGGTGGTTCTGGAGCAGGGGATGAGGAGGCACCTTATCAGCAGAGCACTTCT
 CCACAGCGGGTGTACAGGTTAGGATTCCTAAGGCCCTTCTTCTCCCCAGAAGACCAACCCCTGTGAGA
 TATGTGGCCAGTCTTGAGACAGATTTGCACTTGGTTGAACACCAAGGAACACACCATGGTCAGAACT
 GTATACAGACGGGCATGTAGGAAACAATTACAATTTACTGCATACCTTCATCAGCACCAGAAGCAGCAT
 GTTGGACAGAACTTCAGAAGCAATGGGGCAGAGACATGTTTTGAGCAGCTGCACATTTGAAGTAT
 CTGGGAAGCCCTCACTTGCAAGGAGTTGGGAAGGATTTCTGGTGAGATCAAGATTTCTCAGCAACA
 GGCTGCTCACACCAGAAAGAAGTCAAACAGAACCAAGAGTGCAGTGGCCTTTCACAGTGTAAAAATCAT
 TACAACGGGGAGAATGTGTAAAGCTTTCAGCTACAAACATGTACGTGTTCAGCACCAGGGAGACCTCA
 TTAGGGAAGATCTTACATGTGCAGTGAATGTGGAAATCTTTAGCACAAAGCTGTAGCCTCAGTGATCA
 TTTGAGAGTTCACACTTCAGAAAAGCCTTATACATGTGGAGAATGTGGAAATCCTATAGGCAAAGCTCT
 AGCCTTATTACGCACCGAAGAATTCACACTGGAGTAAGACCTCATCAATGTGATGAATGTGGAAAATTA
 TTAACAGGAAGTATGACCTTCTTATACATCAGAGAGTTCATACTGGAGAAAGCCCTTACAAGTGCAGTGA
 ATGTGGAAATCCTTAGCCATAGCTTAGCCTCATTACACACAGAGAATTCATACTGGAATGAGGCCT
 TATGAGTGCAGTGAATGTGGAAATCTTTATCCATAGTCTAGCCTTATTACACACAGAGAGTTCACA
 CTGGTACAAGGCCTTATGTGCAGTGAATGTGGAAATCCTTTAGCCAGAGCTGCACCTATTAACA
 CCGGAGACTTCACATTGGAGAAGGCCTTATGAGTGTAGTGAATGTGGAAATGTTTACTTATAGATCT
 CGTTTCTTCCAACACAGAGAGTTCATACTGGAGTAAGATCTCATGAATGCATGAATGTGGAAAATTA
 TTAGCAGGAAATTTGACCTCATTGTACATGAGAGAGTTCACACAGGAGAAAGGCCATATGAGTGCAGTGA
 ATGTGGAAATCCTTACCTGTAATCCTACCTCATCTCACACTGGAAAGTTCATACTGGAGCAAGGCCT
 TATGAATGTGGGAGTGTGGAAATCATTTACTCATAGCTCTACGCTCCTTAACACAGAGAGTTCACA
 CTGGAGAAAGGCCTTATGAGTGAATGAATGTGGAAAGTTTTTAGCCAGAGCTCCAGCCTCATTAGACA
 TAGGAGAAGTACACCGGAGAAAGGCCTTATGAGTGCAGTGAATGTGGAAATCCTTAGTAACCACTCT
 AGCCTCGTTAAACACCGAAGAGTTCATACCGGAGAAAGGCCTTATGAATGCAGTGAATGTGGAAATCCT
 TTAGCCAGAGCTTAACCTCACTAATCACCAGCAATTCACAGTGGGAAAGGCCTTATGAGTGTAGTGA
 CTGTGGAAATTTTTACCTTCACTCAACCTCTAAAACATCAGAACGTTTACAAGGGA

ACGCGTACGCGGCCGCTCGAG - GFP Tag - GTTTAA

Protein Sequence:

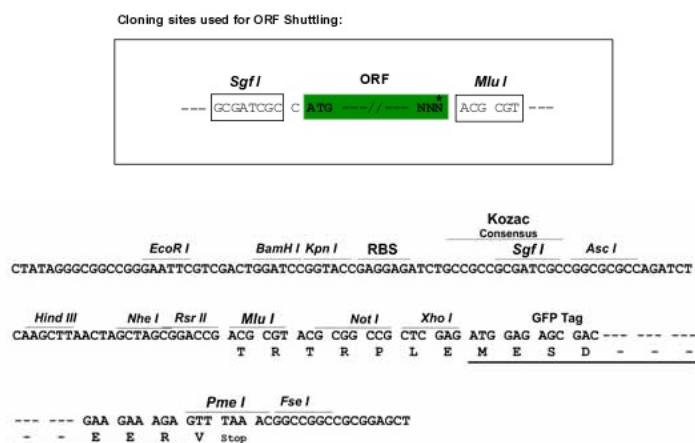
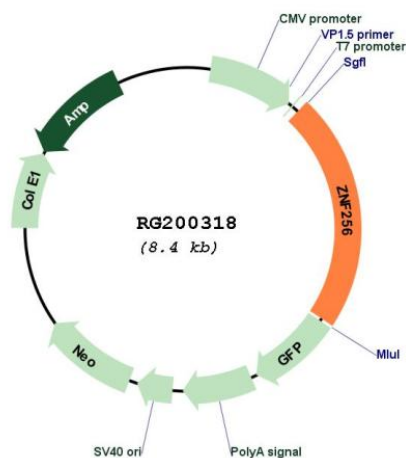
>RG200318 representing NM_005773
 Red=Cloning site Green=Tags(s)

MAAAELTAPAQGIIVTFEDVAVYFSWKEWGLLDEAQKCLYHDVMLENLTLTSLGGSGAGDEEAPYQQSTS
 PQRVSQVRIPKALPSPQKTNPCEICGPVLRQILHLVEHQGTHHGQKLYTDGACRKQLQFTAYLHQHQKH
 VGQKHFRSNGGRDMFLSSCTFEVSGKPFCKEVGKDFLVRSRFLQQAAHTRKKSNRKSAVAFHSVKNH
 YNWGECVKAFSYKHVRVQHQGDHIRERSYMCSECGKSFSTSCSLSDHLRVHTSEKPYTCGECGKSYRQSS
 SLITHRRIHGTGVRPHQCDECGKLFNRKYDLLIHQRVHTGERPYKSECGKSFSSSLITHQRIHTGMRP
 YECSECGKSFISSSLITHQRVHTGTRPYMCSECGKSFSSQSSCHLIKRRRLHIGEPYECSECGKLFYRS
 RFFQHQRVHTGVRSHCECGKLF SRKFDLIVHERVHTGERPYECSECGKSFSTCKSYLISHWKVHTGARP
 YECGECGKSFTHSSTLLQHQRVHTGERPYECNECGKFFSQSSSLIRHRSHTGERPYECSECKWFSFNHS
 SLVKHRRVHTGERPYECSECGKSFSSQSSNLTNHQRIHSGERPYECSDCGKFFTFNSNLLKHQNVHKG

TRTRPLE - GFP Tag - V

Restriction Sites:

SgfI-MluI

Cloning Scheme:

Plasmid Map:


ACCN: NM_005773
 ORF Size: 1881 bp

| | |
|-------------------------------|---|
| OTI Disclaimer: | The molecular sequence of this clone aligns with the gene accession number as a point of reference only. However, individual transcript sequences of the same gene can differ through naturally occurring variations (e.g. polymorphisms), each with its own valid existence. This clone is substantially in agreement with the reference, but a complete review of all prevailing variants is recommended prior to use. More info |
| OTI Annotation: | This clone was engineered to express the complete ORF with an expression tag. Expression varies depending on the nature of the gene. |
| Components: | The ORF clone is ion-exchange column purified and shipped in a 2D barcoded Matrix tube containing 10ug of transfection-ready, dried plasmid DNA (reconstitute with 100 ul of water). |
| Reconstitution Method: | <ol style="list-style-type: none">1. Centrifuge at 5,000xg for 5min.2. Carefully open the tube and add 100ul of sterile water to dissolve the DNA.3. Close the tube and incubate for 10 minutes at room temperature.4. Briefly vortex the tube and then do a quick spin (less than 5000xg) to concentrate the liquid at the bottom.5. Store the suspended plasmid at -20°C. The DNA is stable for at least one year from date of shipping when stored at -20°C. |
| RefSeq: | NM_005773.2 , NP_005764.2 |
| RefSeq Size: | 2228 bp |
| RefSeq ORF: | 1884 bp |
| Locus ID: | 10172 |
| UniProt ID: | Q9Y2P7 |
| Cytogenetics: | 19q13.43 |
| Domains: | zf-C2H2 |
| Protein Families: | Transcription Factors |
| Gene Summary: | Transcriptional repressor that plays a role in cell proliferation. Requires TRIM28 for its activity. [UniProtKB/Swiss-Prot Function] |