

Product datasheet for **RG200315**

GPR56 (ADGRG1) (NM_005682) Human Tagged ORF Clone

Product data:

Product Type:	Expression Plasmids
Product Name:	GPR56 (ADGRG1) (NM_005682) Human Tagged ORF Clone
Tag:	TurboGFP
Symbol:	ADGRG1
Synonyms:	BFPP; BPPR; GPR56; TM7LN4; TM7XN1
Mammalian Cell Selection:	Neomycin
Vector:	pCMV6-AC-GFP (PS100010)
E. coli Selection:	Ampicillin (100 ug/mL)



[View online »](#)

ORF Nucleotide
Sequence:

>RG200315 representing NM_005682
Red=Cloning site Blue=ORF Green=Tags(s)

TTTTGTAATACGACTCACTATAGGGCGGCCGGAATTCGTCGACTGGATCCGGTACCGAGGAGATCTGCC
GCCGCGATCGCC

ATGACTCCCCAGTCGCTGCTGCAGACGACTGTTCTCTGCTGAGTCTGCTTTCCTGGTCCAAGGTGCC
ACGGCAGGGGCCACAGGAAGACTTTCGTTCTGCAGCCAGCGGAACCAGACACACAGGAGCAGCCTCCA
CTACAAACCCACACCAGACCTGCCATCTCCATCGAGAATCCGAAGAGGCCCTCACAGTCCATGCCCT
TTCCCTGCAGCCACCCTGCTTCCCGATCCTTCCCTGACCCAGGGGCCTCTACCACTTCTGCCTACT
GGAACCGACATGCTGGGAGATTACATCTTCTATGGCAAGCGTGACTTCTTGCTGAGTGACAAAGCCTC
TAGCCTCCTCTGCTTCCAGCACCAGGAGAGCCTGGCTCAGGGCCCCCGCTGTTAGCCACTTCTGTC
ACCTCCTGGTGGAGCCCTCAGAACATCAGCCTGCCAGTGCCGCCAGTTACCTTCTCCTCCACAGTC
CTCCCCACACGGCCGCTCACAATGCCTCGGTGGACATGTGCGAGCTCAAAGGGACCTCCAGCTGCTCAG
CCAGTTCTGAAGCATCCCCAGAAGGCCTCAAGGAGGCCCTCGGCTGCCCGCCAGCCAGCAGTTGCAG
AGCCTGGAGTCGAAACTGACCTCTGTGAGATTCATGGGGGACATGGTGTCTTCGAGGAGACCGGATCA
ACGCCACGGTGTGGAAGCTCCAGCCACAGCCGGCCTCCAGGACCTGCACATCCACTCCCGGCAGGAGGA
GGAGCAGAGCGAGATCATGGAGTACTCGGTGCTGCTGCCTCGAACACTCTTCCAGAGGACGAAAGCCGG
AGCGGGGAGGCTGAGAAGAGACTCCTCCTGGTGGACTTACGACGCAAGCCCTGTTCCAGGACAAGAATT
CCAGCCACGTCTGGGTGAGAAGTCTTGGGGATTGTGGTACAGAACACCAAAGTAGCCAACCTCACGGA
GCCCGTGGTGTACCTTCCAGCACCAGCTACAGCCGAAGAATGTGACTTGCAATGTGTGTTCTGGGT
GAAGACCCACATTGAGCAGCCCGGGCATTGGAGCAGTGTGGTGTGAGACCGTCAGGAGAGAAACCC
AAACATCCTGCTTCTGCAACCATTGACCTACTTGCAGTGTGATGGTCTCCTCGGTGGAGGTGGACGC
CGTGCACAAGCACTACCTGAGCCTCCTCCTACGTGGGCTGTGTCGTCTCGCCCTGGCCTGCCTTGT
ACCATTGCCCGCTACCTCTGCTCCAGGGTGCCCTGCCGTGCAGGAGGAAACCTCGGGACTACACCATCA
AGGTGCACATGAACCTGCTGCTGGCCGTCTTCTGCTGGACACGAGCTTCTGCTCAGCGAGCCGGTGGC
CCTGACAGGCTCTGAGGCTGGCTGCCGAGCCAGTGCCATCTTCTGCACTTCTCCTGCTCACCTGCCTT
TCCTGGATGGCCTCGAGGGGTACAACCTTACCAGCTCGTGGTGGAGGTCTTGGCACCTATGTCCCTG
GCTACCTACTCAAGCTGAGCGCCATGGGCTGGGCTTCCCATCTTCTGGTGACGCTGGTGGCCCTGGT
GGATGTGGACAACTATGGCCCCATCATCTTGGCTGTGCATAGGACTCCAGAGGGCGTCATCTACCCTTC
ATGTGCTGGATCCGGGACTCCCTGGTCACTACATCACCACCTGGGCTTTCAGCCTGGTGTCTTCTGT
TCAACATGGCCATGCTAGCCACCATGGTGGTGCAGATCCTGCGGCTGCGCCCCACACCCAAAAGTGGTC
ACATGTGCTGACTGCTGGCCTCAGCCTGGTCTTGGCCTGCCCTGGGCTTGATCTTCTTCTCCTT
GCTTCTGGCACCTTCCAGCTTGTGTCCTTACCTTTTCAGCATCATCACCTCCTTCCAAGGCTTCTCTCA
TCTTACTTGGTACTGGTCCATGCGGCTGCAGGCCGGGTGGCCCTCCCTCTGAAGAGCAACTCAGA
CAGCGCCAGGCTCCCATCAGCTCGGGCAGCACCTCGTCCAGCCGCATC

ACGCGTACGCGGCCGCTCGAG - GFP Tag - GTTTAA

Protein Sequence: >RG200315 representing NM_005682
 Red=Cloning site Green=Tags(s)

MTPQSLQLQTTFLLLSLLFLVQGAHGRGHREDFRFGCSQRNQTHRSSLHYKPTDRLRISIENSEEALTVHAP
 FPAAHPASRSFPDPRGLYHFCLYWNRHAGRLHLLYGKRDFLSDKASSLLCFHQEESLAQGPPLLATSV
 TSWWSPQNI SLPSAASF TFSFHSPHTAAHNASVDMCELKRDQLLSQFLKHPQKASRRPSAAPASQQLQ
 SLESKLT SVRFMGDMVSFEEDRINATVWKLQPTAGLQDLHIHSRQEEEQSEIMEYSVLLPRTLFRQTKGR
 SGAEAKRLLLVDFFSSQALFQDKNSSHVLGEKVLGI VVQNTKVANLTPVVLTFFQHQLQPKNVTLQC VFW
 EDPTLSSPGHWSSAGCETVRRETQTSFCNHLTYFAVLMVSSVEVDVAVHKHYLSLLSYVGCVV SALACL
 TIAAYLCSRVP LPCRKRPRDYTIKVHMLLLAVFLDTSFLLSEPVALTGSEAGCRASAI FLHFSLLTCL
 SWMGLEGYNLYRLVVEVFGTYVPGYLLKLSAMGWGFIFLVTLVALVDVDNYGPIILAVHRTPEGVIYPS
 MCWIRDSLVS YITNLGLFSLVFLFNMAMLATMVVQILRLRPHTQKWSHVL TLLGLSLVLGLPWALIFFSF
 ASGTFQLVVL YLFSIITSFQGLIFIWYWSMLQARGGPSPLKSNDSARLPISSGSTSSSRI

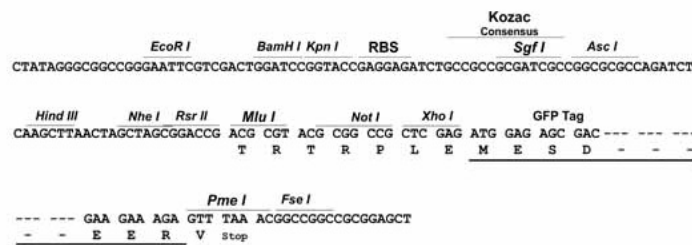
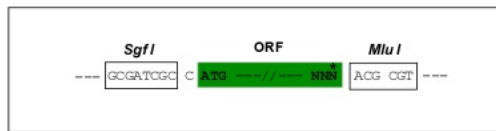
TRTRPLE - GFP Tag - V

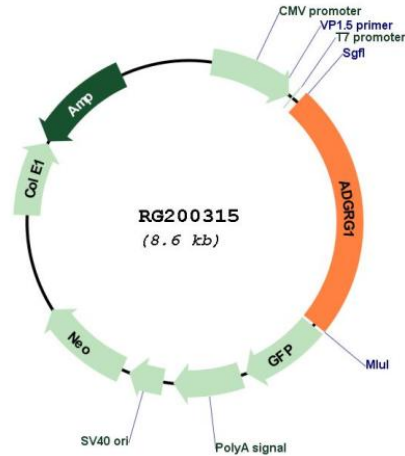
Restriction Sites:

SgfI-MluI

Cloning Scheme:

Cloning sites used for ORF Shuttling:



Plasmid Map:


ACCN: NM_005682

ORF Size: 2079 bp

OTI Disclaimer: The molecular sequence of this clone aligns with the gene accession number as a point of reference only. However, individual transcript sequences of the same gene can differ through naturally occurring variations (e.g. polymorphisms), each with its own valid existence. This clone is substantially in agreement with the reference, but a complete review of all prevailing variants is recommended prior to use. [More info](#)

OTI Annotation: This clone was engineered to express the complete ORF with an expression tag. Expression varies depending on the nature of the gene.

Components: The ORF clone is ion-exchange column purified and shipped in a 2D barcoded Matrix tube containing 10ug of transfection-ready, dried plasmid DNA (reconstitute with 100 ul of water).

Reconstitution Method:

1. Centrifuge at 5,000xg for 5min.
2. Carefully open the tube and add 100ul of sterile water to dissolve the DNA.
3. Close the tube and incubate for 10 minutes at room temperature.
4. Briefly vortex the tube and then do a quick spin (less than 5000xg) to concentrate the liquid at the bottom.
5. Store the suspended plasmid at -20°C. The DNA is stable for at least one year from date of shipping when stored at -20°C.

RefSeq: [NM_005682.3](#)

RefSeq Size: 3850 bp

RefSeq ORF:	2082 bp
Locus ID:	9289
UniProt ID:	Q9Y653
Cytogenetics:	16q21
Domains:	GPS, 7tm_2
Protein Families:	Druggable Genome, GPCR, Transmembrane
Gene Summary:	<p>This gene encodes a member of the G protein-coupled receptor family and regulates brain cortical patterning. The encoded protein binds specifically to transglutaminase 2, a component of tissue and tumor stroma implicated as an inhibitor of tumor progression. Mutations in this gene are associated with a brain malformation known as bilateral frontoparietal polymicrogyria. Alternative splicing results in multiple transcript variants. [provided by RefSeq, Feb 2014]</p>