

## Product datasheet for **RG200305**

### SLC1A5 (NM\_005628) Human Tagged ORF Clone

#### Product data:

|                           |   |
|---------------------------|---|
| Product Type:             | Expression Plasmids                       |
| Product Name:             | SLC1A5 (NM_005628) Human Tagged ORF Clone |
| Tag:                      | TurboGFP                                  |
| Symbol:                   | SLC1A5                                    |
| Synonyms:                 | AAAT; ASCT2; ATBO; M7V1; M7VS1; R16; RDRC |
| Mammalian Cell Selection: | Neomycin                                  |
| Vector:                   | pCMV6-AC-GFP (PS100010)                   |
| E. coli Selection:        | Ampicillin (100 ug/mL)                    |



[View online »](#)

**ORF Nucleotide Sequence:**

>RG200305 representing NM\_005628  
 Red=Cloning site Blue=ORF Green=Tags(s)

TTTTGTAATACGACTCACTATAGGGCGGCCGGGAATTCGTCGACTGGATCCGGTACCGAGGAGATCTGCC  
 GCC**CGGATCGCC**

ATGGTGGCCGATCCTCCTCGAGACTCCAAGGGGCTCGCAGCGCGGAGCCACCGCCAACGGGGCCTGG  
 CGCTGGCCTCCATCGAGGACCAAGGCGCGCAGCAGGCGGCTACTGCGGTTCCCGGGACCAGGTGCGCCG  
 CTGCCTTCGAGCCAACCTGCTTGTGCTGCTGACAGTGGTGGCCGTGGTGGCCGGCGTGGCCTGGGACTG  
 GGGGTGTCGGGGGCCGGGGTGCCTGGCGTTGGGCCCGAGCGCTTGAGCGCCTTCGTCTTCCCGGGCG  
 AGCTGCTGCTGCTGCTGCGGATGATCATCTTGCCGCTGGTGGTGTGCAGCTTGATCGGCGGCGCCGC  
 CAGCCTGGACCCCGCGCTCGGCCGTGGGCGCTGGGCGCTGCTCTTTTCTGGTACCACGCTG  
 CTGGCGTCGGCGCTCGGAGTGGGCTTGGCGCTGGCTCTGCAGCCGGCGCCGCTCCGCCCATCAACG  
 CCTCCGTGGGAGCCGGGCGAGTCCGAAAATGCCCCAGCAAGGAGGTGCTCGATTGTTCTGGATCT  
 TGCAGAAAATATCTTCCCTTCCAACCTGGTGTGTCAGCAGCCTTTCGCTCATACTCTACCACCTATGAAGAG  
 AGGAATATCACCGGAACCAAGGTGAAGGTGCCCGTGGGGCAGGAGGTGGAGGGATGAACATCCTGGGCT  
 TGGTAGTGTGGCCATCGTCTTGGTGTGGCGCTGCGGAAGCTGGGGCCTGAAGGGGAGCTGCTTATCCG  
 CTTCTTCAACTCCTTCAATGAGGCCACCATGGTCTGGTCTCCTGGATCATGTGGTACGCCCCTGTGGGC  
 ATCATGTTCTGGTGGCTGGCAAGATCGTGGAGATGGAGGATGTGGGTTACTCTTGGCCGCTTGGCA  
 AGTACATTCTGTGCTGCCTGCTGGGTACGCCATCCATGGGCTCCTGGTACTGCCCTCATCTACTTCT  
 CTTACCCGCAAAAACCCTACCGCTTCTGTGGGCACTCGTACGCCGCTGGCCACTGCCTTGGGACC  
 TCTTCCAGTTCGCCACGCTGCCGCTGATGATGAAGTGGTGGAGAGAATAATGGCGTGGCCAAGCACA  
 TCAGCGTTCATCTGCCATCGCGCCACCGTCAACATGGACGGTGGCGGCTCTCCAGTGGCGTGGC  
 CGCAGTGTTCATTGCACAGCTCAGCCAGCAGTCCCTGGACTTCGTAAGATCATCACCATCCTGGTCAG  
 GCCACAGCGTCCAGCGTGGGGCAGCGGCATCCCTGCTGGAGGTGTCTCACTCTGGCCATCATCTCG  
 AAGCAGTCAACCTCCCGTTCGACCATATCTCCTTATCCTGGCTGGACTGGCTAGTCGACCGGTCTG  
 TACCGTCTCAATGTAGAAGGTGACGCTCTGGGGCAGGACTCCTCCAAAATTACGTGGACCGTACGGAG  
 TCGAGAAGCACAGAGCCTGAGTTGATACAAGTGAAGAGTGAAGTGGCCCTGGATCCGCTGCCACTCCCA  
 CTGAGGAAGGAAACCCCTCCTCAAACACTATCGGGGGCCCGAGGGATGCCACGGTGCCTCTGAGAA  
 GGAATCAGTCATG

**ACGCGTACGCGGCCGCTCGAG** – GFP Tag – GTTTAA

**Protein Sequence:**

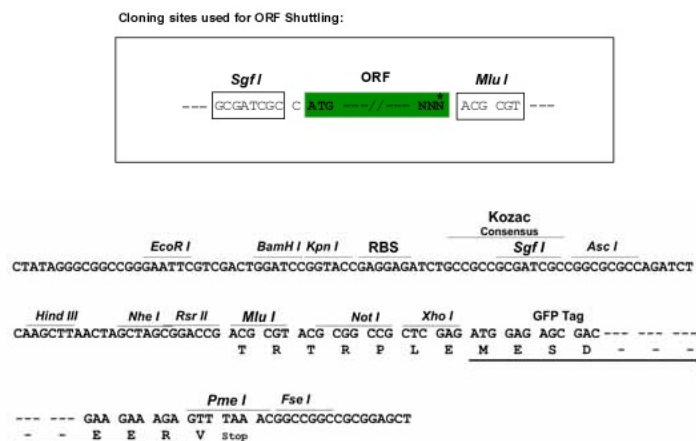
>RG200305 representing NM\_005628  
 Red=Cloning site Green=Tags(s)

MVADPPRDSKGLAAAEP TANGGLALASIEDQGAAGGYCGSRDQVRRCLRANLLVLLTVVAVVAGVALGL  
 GVSGAGGALALGPERLSAFVFPGELLLRLLRMIILPLVVCSLIGGAASLDPGALGRLGAWALLFFLVTTL  
 LASALGVGLALALQPGAASAAINASVGAAGSAENAPSKEVLDNFLDLARNIFPSNLVSAAFRSYSTTYEE  
 RNITGTRVKVPVQGEVEGMNIGLVVFAIVFGVALRKLGPGEGLLIRFFNSFNEATMVLVSWIMWYAPVG  
 IMFLVAGKIVEMEDVGLLFARLKYILCCLLGHAIHGLLVLPLIYFLFTRKNPYRFLWGIPTPLATAFGT  
 SSSSATLPLMMKVEENNGVAKHISRFILPIGATVNMDGAALFQCVAAVIAQLSQSLDFVKIITILVT  
 ATASSVGAAGIPAGGVLTLAIILEAVNLPVDHISLILAVDWLVDRSCTVLNVEGDALGAGLLQNYVDRTE  
 SRSTEPELIQVKSLEPLDPLPLPTEEGNPLLKHYRGPAGDATVASEKESVM

**TRTRPLE** – GFP Tag – V

**Restriction Sites:**

Sgfl-MluI

**Cloning Scheme:**


**ACCN:** NM\_005628

**ORF Size:** 1623 bp

**OTI Disclaimer:** The molecular sequence of this clone aligns with the gene accession number as a point of reference only. However, individual transcript sequences of the same gene can differ through naturally occurring variations (e.g. polymorphisms), each with its own valid existence. This clone is substantially in agreement with the reference, but a complete review of all prevailing variants is recommended prior to use. [More info](#)

**OTI Annotation:** This clone was engineered to express the complete ORF with an expression tag. Expression varies depending on the nature of the gene.

**Components:** The ORF clone is ion-exchange column purified and shipped in a 2D barcoded Matrix tube containing 10ug of transfection-ready, dried plasmid DNA (reconstitute with 100 ul of water).

**Reconstitution Method:**

1. Centrifuge at 5,000xg for 5min.
2. Carefully open the tube and add 100ul of sterile water to dissolve the DNA.
3. Close the tube and incubate for 10 minutes at room temperature.
4. Briefly vortex the tube and then do a quick spin (less than 5000xg) to concentrate the liquid at the bottom.
5. Store the suspended plasmid at -20°C. The DNA is stable for at least one year from date of shipping when stored at -20°C.

**RefSeq:** [NM\\_005628.1](#), [NP\\_005619.1](#)

**RefSeq Size:** 2856 bp

**RefSeq ORF:** 1626 bp

**Locus ID:** 6510

**UniProt ID:** [Q15758](#)

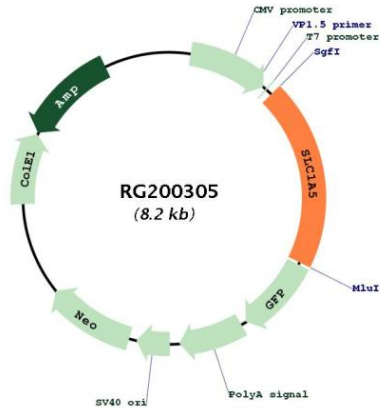
**Cytogenetics:** 19q13.32

**Domains:** SDF

**Protein Families:** Druggable Genome, Transmembrane

**Gene Summary:** The SLC1A5 gene encodes a sodium-dependent neutral amino acid transporter that can act as a receptor for RD114/type D retrovirus (Larriba et al., 2001 [PubMed 11781704]).[supplied by OMIM, Jan 2011]

**Product images:**



Circular map for RG200305