

Product datasheet for **RG200303**

WDR1 (NM_017491) Human Tagged ORF Clone

Product data:

Product Type:	Expression Plasmids
Product Name:	WDR1 (NM_017491) Human Tagged ORF Clone
Tag:	TurboGFP
Symbol:	WDR1
Synonyms:	AIP1; HEL-S-52; NORI-1; PFITS
Mammalian Cell Selection:	Neomycin
Vector:	pCMV6-AC-GFP (PS100010)
E. coli Selection:	Ampicillin (100 ug/mL)



[View online »](#)

ORF Nucleotide Sequence:

>RG200303 representing NM_017491
 Red=Cloning site Blue=ORF Green=Tags(s)

TTTTGTAATACGACTCACTATAGGGCGGCCGGAATTCGTCGACTGGATCCGGTACCGAGGAGATCTGCC
 GCC**CGGATCGCC**

ATGCCGTACGAGATCAAGAAGGTGTTCCGCAGCCTCCCGCAGGTGGAGAGGGCGTCTCCAAGATCATCG
 GCGGCGACCCTAAGGGCAACAATTTCTGTACACCAATGGAAAGTGCGTCATCCTAAGGAACATCGACAA
 CCCAGCCCTTGCTGACATCTACACAGAGCAGCCCATCAGGTGGTGGTGGCCAAGTATGCGCCACGCGGA
 TTCTACATTGCCTCCGGAGATGTGTCTGGGAAGCTGAGGATCTGGGATACCACGCAGAAGGAGCACCTGT
 TGAAGTATGAGTACCAGCCTTTCGCTGGGAAGATCAAAGACATTGCTTGGACTGAAGACAGTAAGAGGAT
 CGCCGTGGTCCGGGAAGGAAGGGAGAAGTTGGAGCAGTCTTCTCTGGGATAGTGGCTCTTCTGTGGGC
 GAGATTACAGGACACAACAAGTCATCAACAGCGTGGACATCAAGCAGAGCCGCCATACCGGCTGGCCA
 CGGAAGCGATGATAAATGCGCGCATTCTTTGAGGGACCCCATCAAGTTCAGTTCACAATTGGCGA
 CCACAGCCGCTTGTCAACTGTGTGCGATTCTCTCTGATGGGAACAGATTTGCCACAGCCAGTGTCTGAC
 GCCAGATATACATCTATGACGGGAAGACTGGGGAAGGTGTGCGCGCTGGGCGGAAGCAAGGCCACG
 ACGGTGGGATTTACGCAATTAGTTGGAGTCCCGACAGCACCCATTTGCTTTCTGCTTCTGGGACAAAAAC
 TTCCAAGATTTGGGACGTGAGCGTGAATCCGTGGTCCAGCACATTTCCCATGGGCTCCACGGTCTGGAC
 CAGCAGCTGGGCTGCCTATGGCAGAAGGACCACCTGCTCAGTGTCTCCCTGTCCGGGTACATCAACTATC
 TGGACAGAAAACACCCAGCAAGCCCTGCACGTCAAGGGTACAGTAAATCGATCCAGTGTCTGAC
 GGTGCATAAAAACGGCGGCAAGTCTACATTTACTCTGGGAGCCACGACGGACACATTAATTACTGGGAT
 TCAGAGACGGGGAGAAGCAGTCTCAGTGCAGCATGGACGACACCGTGGGTACACCGCCTCATGCTCGGGA
 CTACAGCGGACAAGGAGTTGTGAAACTGGACGTTACGCCAAAGTGCCTAGCCGTCGGCCCCGGGGATAC
 GCCGTGGTGTGATTGGACAGATTGCTCTGTAAGGATCAGAGGAAGTGTTCAGCATCGACAACC
 CCGGCTACGAGCCGAAGTTGTGGCAGTGCACCCCGCGGGGACACGGTGGCAATTGGGGGTGTGGACGG
 CAACGTCCGCCTGATTCCATCTGGGCACCACGTTGAAGGATGAGGGCAAGCTCCTAGAGGCCAAGGGC
 CCCGTGACCGACGTGGCCTACTCCACGACGGCGCCTTCTCGCGGTGTGCGACGCCAGAGGTGGTCA
 CAGTGTTCAGCGTTGCTGACGGCTACTCGGAGAACAATGTTTTTATGGACACCATGCAAAAATCGTCTG
 CCTGGCCTGGTCCCAGACAATGAACACTTTGCCTCCGGTGGCATGGACATGATGGTGTATGTTTGGACC
 CTGAGTGACCCGAAACCAGAGTCAAGATCCAAGATGCACACCGGCTGCACCATGTCAGCAGCCTGGCCT
 GGCTGGACGAGCACAGCTGGTACGACCTCCCATGATGCCTCTGTCAAGGAGTGGACAATCACCTAC

ACGCGTACGCGGCCGCTCGAG – GFP Tag – GTTTAA

Protein Sequence:

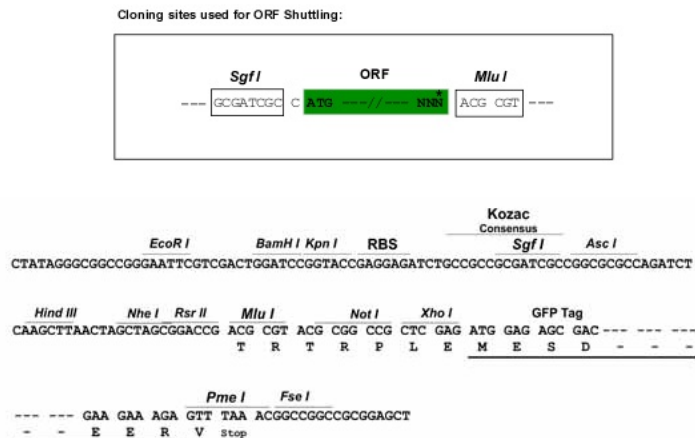
>RG200303 representing NM_017491
 Red=Cloning site Green=Tags(s)

MPYEIKKVFASLPQVERGVSKIIGDPPKGNFLYNGKCVILRNIDNPALADIYTEHAHQVVVAKYAPSG
 FYIASGDVSGKLRWDTTQKEHLLKYEYQPFAGKIKDIAWTEDSKRIAVVGEKREKFGAVFLWDSGSSVG
 EITGHNKVINSDIKQSRPYRLATGSDDNCAAFFEGPPFKFKFTIGDHSRNVNCRVSPDGNRFATASAD
 GQIYIYDGTGEKVCALGGSKAHDGGIYAISSPDSTHLLSASGDKTSKIWDVSVNSVSTFPMGSTVLD
 QQLGCLWQKDHLLSVSLSGYINYLDRNPNKPLHVIKGHKSIQCLTVHKNGGKSYIYSGSHDGHINYWD
 SETGENDSFAGKHTNQVSRMTVDESGQLISCSMDDTVRYTSLMLRDYSGQGVVCLDVQPKCVAVGPPGY
 AVVVCIGQIVLLKQDKCFSIDNPGYEPEVVAVHPGGDTVAIGGVDGNVRLYSILGTTLKDEGKLEAKG
 PVTDVAYSHDGAFLAVCDASKVTVFVSVADGYSENNVYGHAKIVCLAWSPDNEHFASGMDMMVYVWT
 LSDPETRVKIQDAHRLHHVSSLAWLDEHTLVTTSHDASVKEWTITY

TRTRPLE – GFP Tag – V

Restriction Sites:

Sgfl-MluI

Cloning Scheme:


ACCN: NM_017491

ORF Size: 1818 bp

OTI Disclaimer: The molecular sequence of this clone aligns with the gene accession number as a point of reference only. However, individual transcript sequences of the same gene can differ through naturally occurring variations (e.g. polymorphisms), each with its own valid existence. This clone is substantially in agreement with the reference, but a complete review of all prevailing variants is recommended prior to use. [More info](#)

OTI Annotation: This clone was engineered to express the complete ORF with an expression tag. Expression varies depending on the nature of the gene.

Components: The ORF clone is ion-exchange column purified and shipped in a 2D barcoded Matrix tube containing 10ug of transfection-ready, dried plasmid DNA (reconstitute with 100 ul of water).

Reconstitution Method:

1. Centrifuge at 5,000xg for 5min.
2. Carefully open the tube and add 100ul of sterile water to dissolve the DNA.
3. Close the tube and incubate for 10 minutes at room temperature.
4. Briefly vortex the tube and then do a quick spin (less than 5000xg) to concentrate the liquid at the bottom.
5. Store the suspended plasmid at -20°C. The DNA is stable for at least one year from date of shipping when stored at -20°C.

RefSeq: [NM_017491.3](#), [NP_059830.1](#)

RefSeq Size: 3160 bp

RefSeq ORF: 1821 bp

Locus ID: 9948

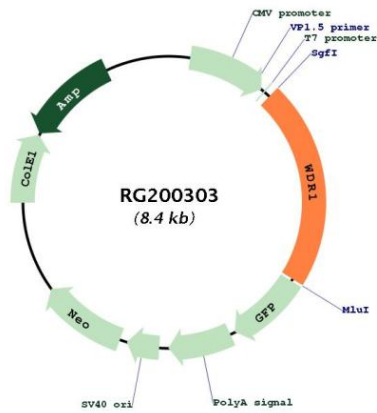
UniProt ID: [O75083](#)

Cytogenetics: 4p16.1

Domains: WD40

Gene Summary: This gene encodes a protein containing 9 WD repeats. WD repeats are approximately 30- to 40-amino acid domains containing several conserved residues, mostly including a trp-asp at the C-terminal end. WD domains are involved in protein-protein interactions. The encoded protein may help induce the disassembly of actin filaments. Two transcript variants encoding different isoforms have been found for this gene. [provided by RefSeq, Jul 2008]

Product images:



Circular map for RG200303