

Product datasheet for **RG200269**

PISD (NM_014338) Human Tagged ORF Clone

Product data:

Product Type:	Expression Plasmids
Product Name:	PISD (NM_014338) Human Tagged ORF Clone
Tag:	TurboGFP
Symbol:	PISD
Synonyms:	DJ858B16; dj858B16.2; LIBF; PSD; PSDC; PSSC
Mammalian Cell Selection:	Neomycin
Vector:	pCMV6-AC-GFP (PS100010)
E. coli Selection:	Ampicillin (100 ug/mL)
ORF Nucleotide Sequence:	>RG200269 representing NM_014338 Red=Cloning site Blue=ORF Green=Tags(s)

TTTTGTAATACGACTCACTATAGGGCGGCCGGAATTCGTCGACTGGATCCGGTACCGAGGAGATCTGCC
GCC**CGATCGCC**

ATGATGTGTCAGTCAGAGGCGGGCAAGGACCAGAGCTCCGCGCGGCGAAATGGTTGCACTTCCCCAGC
TGGCCCTGAGGCGGAGGCTGGGGCAGCTGAGCTGCATGTCCAGACCCGCTCTGAAACTGCGCTCCTGGCC
CTTGACCGTCTCTACTACCTCCTGCCCTTCGGCGCCCTCAGACCCTCAGCCGGGTGGGATGGAGGCC
GTAAGCAGGGTGGCTTTGTACAAGTCAGTGCCAACGCGCTTGCTGTCACGGGCTGGGGTGCCTCAATC
AGGTGGAGCTGCCACACTGGCTGCGCAGGCCCGTCTACAGCCTGTACATCTGGACGTTTGGGGTGAACAT
GAAAGAGGCCGCTGTGGAGGACCTGCATCACTACCGCAACCTCAGCGAGTTCTTCCGGCGCAAGCTGAAG
CCGCAGGCCCGGCTGTCTGTGGCTGCACAGCGTGATTAGCCCATCGGATGGAAGGATCCTCAACTTTG
GGCAGGTGAAGAAGTGTGAGGTGGAGCAGGTAAGGGGGTCACTACTCCCTGGAGTCGTTCTGGGCC
GCGTATGTGCACAGAGGACCTGCCCTTCCCACCAGCCGCGTGTGTGACTCCTTCAAGAACCAGCTGGTC
ACCCGGGAAGGGAATGAGCTCTATCACTGTGCATCTACTGGCCCTGGGGACTACCACTGCTTCCACT
CCCCACCGACTGGACTGTGCCACCGGCGCCACTTCCCAGGCTCCCTGATGTCAGTGAACCCTGGCAT
GGCTCGCTGGATCAAAGAGCTCTTCTGCCATAACGAGCGGGTGGTCTGACGGGGACTGGAAACATGGC
TTCTTCTCACTGACAGCTGTGGGGGCCACCAACGTGGGCTCCATTCCGATCTACTTTGACCGGGACCTGC
ACACAAAACAGCCCAAGGCACAGCAAGGGCTCCTACAATGACTTCACTTGTGACGCACACCAATAGAGA
GGGCGTCCCCATGCGTAAGGGCGAGCACCTGGGCGAGTTCAACCTGGGCTCCACCATCGTCTCATCTTC
GAGGCCCAAGGACTTCAATTTCCAGCTGAAAACAGGACAGAAAATCCGCTTTGGGGAAGCCCTGGGCT
CGCTC

ACGCGTACGCGGCCGCTCGAG - GFP Tag - GTTTAA



[View online »](#)

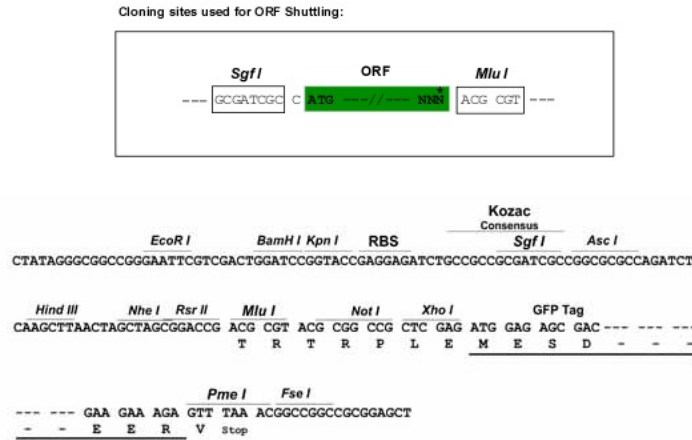
Protein Sequence: >RG200269 representing NM_014338
 Red=Cloning site Green=Tags(s)

MMCQSEARQGPELRAAKWLHFPQLALRRRLGQLSCMSRPALKLRSWPLTVLYLLPFGALRPLSRVGWRP
 VSRVALYKSVPTRLLSRAWGRLNQVELPHWLRPVSLSYIWTFGVNMKEAAVEDLHHYRNLSEFFRRKLLK
 PQARPVCGLHSVISPSDGRILNFGQVKNCEVEQVKGVTSLESFLGPRMCTEDLPFPPAASCDSEFKNQLV
 TREGNELYHCVIYLAPGDYHCFHSPTDWTVSHRRHFPGLMSVNPGMARWIKELFCHNERVVLTGDWKHG
 FFSLTAVGATNVGSIIRIYFDRDLHTNSPRHSGSYNDFSFVTHTNREGVPMRKGHELGFEFNLGSTIYLIF
 EAPKDFNFQLKTGQKIRFGAALGSL

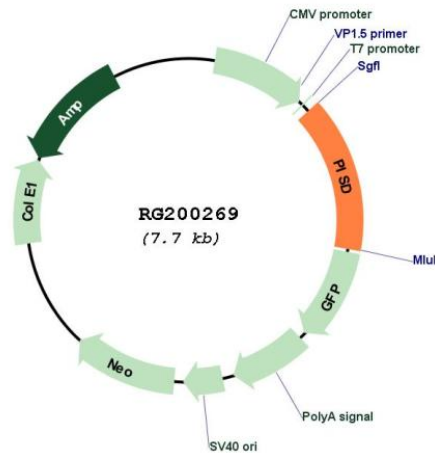
TRTRPLE - GFP Tag - V

Restriction Sites: SgfI-MluI

Cloning Scheme:



Plasmid Map:



ACCN: NM_014338

ORF Size:	1125 bp
OTI Disclaimer:	<p>Due to the inherent nature of this plasmid, standard methods to replicate additional amounts of DNA in E. coli are highly likely to result in mutations and/or rearrangements. Therefore, OriGene does not guarantee the capability to replicate this plasmid DNA. Additional amounts of DNA can be purchased from OriGene with batch-specific, full-sequence verification at a reduced cost. Please contact our customer care team at custsupport@origene.com or by calling 301.340.3188 option 3 for pricing and delivery.</p> <p>The molecular sequence of this clone aligns with the gene accession number as a point of reference only. However, individual transcript sequences of the same gene can differ through naturally occurring variations (e.g. polymorphisms), each with its own valid existence. This clone is substantially in agreement with the reference, but a complete review of all prevailing variants is recommended prior to use. More info</p>
OTI Annotation:	This clone was engineered to express the complete ORF with an expression tag. Expression varies depending on the nature of the gene.
Components:	The ORF clone is ion-exchange column purified and shipped in a 2D barcoded Matrix tube containing 10ug of transfection-ready, dried plasmid DNA (reconstitute with 100 ul of water).
Reconstitution Method:	<ol style="list-style-type: none"> 1. Centrifuge at 5,000xg for 5min. 2. Carefully open the tube and add 100ul of sterile water to dissolve the DNA. 3. Close the tube and incubate for 10 minutes at room temperature. 4. Briefly vortex the tube and then do a quick spin (less than 5000xg) to concentrate the liquid at the bottom. 5. Store the suspended plasmid at -20°C. The DNA is stable for at least one year from date of shipping when stored at -20°C.
RefSeq:	NM_014338.3 , NP_055153.1
RefSeq Size:	2693 bp
RefSeq ORF:	1128 bp
Locus ID:	23761
UniProt ID:	Q9UG56
Cytogenetics:	22q12.2
Domains:	PS_Dcarbxyase
Protein Pathways:	Glycerophospholipid metabolism, Metabolic pathways
Gene Summary:	<p>The protein encoded by this gene catalyzes the conversion of phosphatidylserine to phosphatidylethanolamine in the inner mitochondrial membrane. The encoded protein is active in phospholipid metabolism and interorganelle trafficking of phosphatidylserine. [provided by RefSeq, May 2016]</p>