

Product datasheet for **RG200253**

ZFPL1 (NM_006782) Human Tagged ORF Clone

Product data:

Product Type:	Expression Plasmids
Product Name:	ZFPL1 (NM_006782) Human Tagged ORF Clone
Tag:	TurboGFP
Symbol:	ZFPL1
Synonyms:	D11S750; MCG4
Mammalian Cell Selection:	Neomycin
Vector:	pCMV6-AC-GFP (PS100010)
E. coli Selection:	Ampicillin (100 ug/mL)
ORF Nucleotide Sequence:	>RG200253 representing NM_006782 Red=Cloning site Blue=ORF Green=Tags(s)

TTTTGTAATACGACTCACTATAGGGCGGCCGGAATTCGTCGACTGGATCCGGTACCGAGGAGATCTGCC
GCC**CGATCGCC**

ATGGGGCTTTGTAAGTGCCCAAGAGAAAGGTGACCAACCTGTTCTGCTTCGAACATCGGGTCAACGTCT
GCGGACTGCCTGGTAGCCAATCACGCCAAGTGCATCGTCCAGTCTACCTGCAATGGCTCCAAGATAG
CGACTACAACCCCAATTGCCGCTGTGCAACATACCCCTGGCCAGCCGAGAGACGACCCGCCTTGTCTGC
TATGATCTTTTCACTGGCCTGCCTCAATGAACGTGTGCCAGCTACCCGAAACACGGCACCTGCCG
GCTATCAGTGCCCGAGTCAATGGCCCATCTTCCCCCAACCAACCTGGCTGGCCCCGTGGCCTCCGC
ACTGAGAGAGAAGCTGGCCACAGTCAACTGGGCCCGGCCAGGACTGGGCCCTCCCTCTGATCGATGAGGTG
GTGAGCCAGAGCCGAGCCCTCAACACGTCTGACTTCTGACTGGTCTAGTTTTAATGCCAGCAGTA
CCCCTGGACCAGAGGAGGTAGACAGCGCCTCTGCTGCCAGCCTTCTACAGCCAGGCCCCCCGGCCCC
AGCTTCCCCAGGCCGGCCGAGCAGCACACAGTATCCACATGGGCAATCCTGAGCCCTTGACTCACGCC
CCTAGGAAGGTGTATGATACGCGGGATGATGACCGGACACCAGGCTCCATGGAGACTGTGACGATGACA
AGTACCGACGTCGGCCGGCCTTGGGTTGGCTGGCCGGCTGCTAAGGAGCCGGCTGGGTCTCGGAAGCG
GCCGCTGACCTGCTCCAGCGGGCGGGCTGCTGCTACTTTGGGACTGCTGGGCTTCTGGCCCTCCTT
GCCCTCATGTCTGCCTAGGCCGGCCGAGCTGACAGCGATCCCAACCTGGACCACTCATGAACCTC
ACATCCGGTGGGCCCTCC

ACGCGTACGCGGCCGCTCGAG - GFP Tag - GTTTAA



[View online »](#)

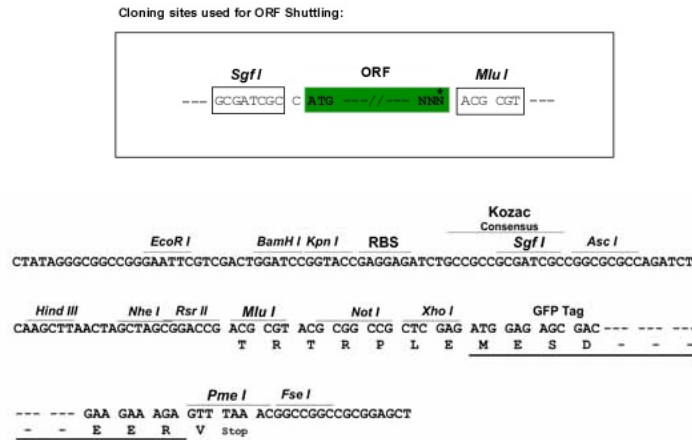
Protein Sequence: >RG200253 representing NM_006782
Red=Cloning site Green=Tags(s)

MGLCKCPKRKVTNLFCEHVRNVCEHCLVANHAKCIVQSYLQWLQSDYDNPNCRLCNIPLASRETRTLVC
 YDLFWACLNERAAQLPRNTAPAGYQPCSCNGPIFPPTNLAGPVASALREKLATVNWARAGLGLPLIDEV
 VSPEPEPLNTSDFSDWSSFNASSTPGPEEVDSASAAPAFYSQAPRPPASPGRPEQHTVIHMGNPEPLTHA
 PRKVYDTRDDDRTPGLHGDCDDDKYRRRPALGWLARLLRSRAGSRKRPLTLLQRAGLLLLLGLLGLFALL
 ALMSRLGRAAADSDPNLDPLMNPHIRVGPSS

TRTRPLE - GFP Tag - V

Restriction Sites: SgfI-MluI

Cloning Scheme:



ACCN: NM_006782

ORF Size: 930 bp

OTI Disclaimer: The molecular sequence of this clone aligns with the gene accession number as a point of reference only. However, individual transcript sequences of the same gene can differ through naturally occurring variations (e.g. polymorphisms), each with its own valid existence. This clone is substantially in agreement with the reference, but a complete review of all prevailing variants is recommended prior to use. [More info](#)

OTI Annotation: This clone was engineered to express the complete ORF with an expression tag. Expression varies depending on the nature of the gene.

Components: The ORF clone is ion-exchange column purified and shipped in a 2D barcoded Matrix tube containing 10ug of transfection-ready, dried plasmid DNA (reconstitute with 100 ul of water).

Reconstitution Method:

1. Centrifuge at 5,000xg for 5min.
2. Carefully open the tube and add 100ul of sterile water to dissolve the DNA.
3. Close the tube and incubate for 10 minutes at room temperature.
4. Briefly vortex the tube and then do a quick spin (less than 5000xg) to concentrate the liquid at the bottom.
5. Store the suspended plasmid at -20°C. The DNA is stable for at least one year from date of shipping when stored at -20°C.

RefSeq: [NM_006782.4](#)

RefSeq Size: 1400 bp

RefSeq ORF: 933 bp

Locus ID: 7542

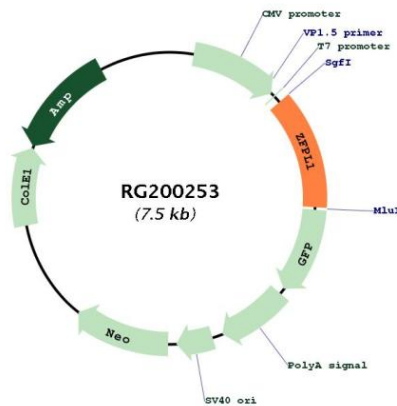
UniProt ID: [O95159](#)

Cytogenetics: 11q13.1

Protein Families: Transcription Factors, Transmembrane

Gene Summary: Required for cis-Golgi integrity and efficient ER to Golgi transport. Involved in the maintenance of the integrity of the cis-Golgi, possibly via its interaction with GOLGA2/GM130. [UniProtKB/Swiss-Prot Function]

Product images:



Circular map for RG200253