

Product datasheet for **RG200249**

RAB31 (NM_006868) Human Tagged ORF Clone

Product data:

Product Type: Expression Plasmids
Product Name: RAB31 (NM_006868) Human Tagged ORF Clone
Tag: TurboGFP
Symbol: RAB31
Synonyms: Rab22B
Mammalian Cell Selection: Neomycin
Vector: pCMV6-AC-GFP (PS100010)
E. coli Selection: Ampicillin (100 ug/mL)
ORF Nucleotide Sequence: >RG200249 representing NM_006868
 Red=Cloning site Blue=ORF Green=Tags(s)

TTTTGTAATACGACTCACTATAGGGCGCCGGAATTCGTCGACTGGATCCGGTACCGAGGAGATCTGCC
 GCC**CGATCGCC**

ATGATGGCGATACGGGAGCTCAAAGTGTGCCTTCTCGGGGACACTGGGGTTGGGAAATCAAGCATCGTGT
 GTCGATTTGTCCAGGATCACTTTGACCACAACATCAGCCCTACTATTGGGCATCTTTTATGACCAAAAC
 TGTGCCTTGTGGAAATGAACTTCACAAGTTCTCATCTGGGACACTGCTGGTCAGGAACGGTTTCATTCA
 TTGGCTCCCATGTACTATCGAGGCTCAGCTGCAGCTGTTATCGTGTATGATATTACCAAGCAGGATTCAT
 TTTATACCTTGAAGAAATGGGTCAAGGAGCTGAAAGAACATGGTCCAGAAAACATTGTAATGGCCATCGC
 TGGAAACAAGTGCACCTCTCAGATATTAGGGAGGTTCCCTGAAGGATGCTAAGGAATACGCTGAATCC
 ATAGGTGCCATCGTGGTTGAGACAAGTGCAAAAATGCTATTAATATCGAAGAGCTTTTCAAGGAATCA
 GCCGCCAGATCCCACCCTTGACCCCCATGAAAATGAAAACAATGGAACAATCAAAGTTGAGAAGCCAAC
 CATGCAAGCCAGCCGCCGGTGCTGT

ACGCGTACGCGGCCGCTCGAG - GFP Tag - GTTTAA

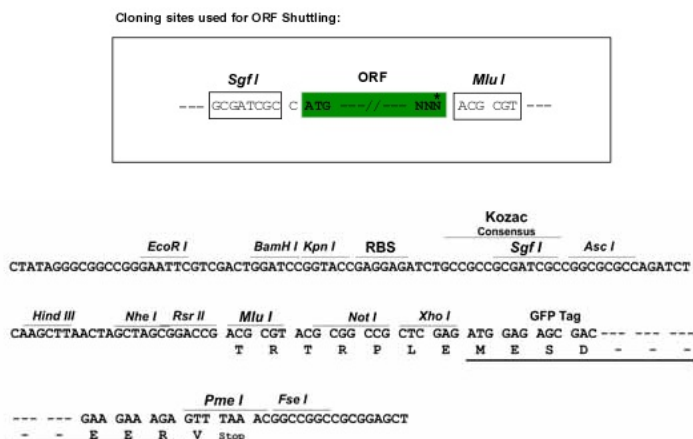
Protein Sequence: >RG200249 representing NM_006868
 Red=Cloning site Green=Tags(s)

MMAIRELKVCLLGDITGVGKSSIVCRFVQDHFHDNISPTIGASFMTKTVPCGNELHKFLIWDTAGQERFHS
 LAPMYRGSAAAVIVYDITKQDSFYTLKKWVKELKEHGPENIVMAIAGNKCDLSDIREVPLKDAKEYAES
 IGAIVVETSAKNAINIEELFQGISRQIPPLDPHENGNGTIKVEKPTMQASRRCC

TRTRPLE - GFP Tag - V

Restriction Sites: Sgfl-MluI



Cloning Scheme:


ACCN: NM_006868

ORF Size: 585 bp

OTI Disclaimer: The molecular sequence of this clone aligns with the gene accession number as a point of reference only. However, individual transcript sequences of the same gene can differ through naturally occurring variations (e.g. polymorphisms), each with its own valid existence. This clone is substantially in agreement with the reference, but a complete review of all prevailing variants is recommended prior to use. [More info](#)

OTI Annotation: This clone was engineered to express the complete ORF with an expression tag. Expression varies depending on the nature of the gene.

Components: The ORF clone is ion-exchange column purified and shipped in a 2D barcoded Matrix tube containing 10ug of transfection-ready, dried plasmid DNA (reconstitute with 100 ul of water).

Reconstitution Method:

1. Centrifuge at 5,000xg for 5min.
2. Carefully open the tube and add 100ul of sterile water to dissolve the DNA.
3. Close the tube and incubate for 10 minutes at room temperature.
4. Briefly vortex the tube and then do a quick spin (less than 5000xg) to concentrate the liquid at the bottom.
5. Store the suspended plasmid at -20°C. The DNA is stable for at least one year from date of shipping when stored at -20°C.

RefSeq: [NM_006868.4](#)

RefSeq Size: 3969 bp

RefSeq ORF: 588 bp

Locus ID: 11031

UniProt ID: [Q13636](#)

Cytogenetics: 18p11.22

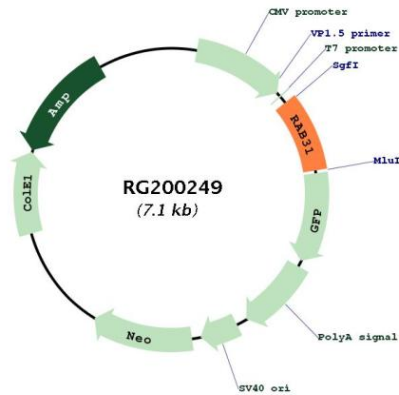
Domains: ras, RAN, RAS, RHO, RAB

Protein Families: Druggable Genome

Protein Pathways: Endocytosis

Gene Summary: Small GTP-binding proteins of the RAB family, such as RAB31, play essential roles in vesicle and granule targeting (Bao et al., 2002 [PubMed 11784320]).[supplied by OMIM, Jul 2009]

Product images:



Circular map for RG200249