

Product datasheet for **RG200195**

BAMBI (NM_012342) Human Tagged ORF Clone

Product data:

Product Type:	Expression Plasmids
Product Name:	BAMBI (NM_012342) Human Tagged ORF Clone
Tag:	TurboGFP
Symbol:	BAMBI
Synonyms:	NMA
Mammalian Cell Selection:	Neomycin
Vector:	pCMV6-AC-GFP (PS100010)
E. coli Selection:	Ampicillin (100 ug/mL)
ORF Nucleotide Sequence:	>RG200195 representing NM_012342 Red=Cloning site Blue=ORF Green=Tags(s)

TTTTGTAATACGACTCACTATAGGGCGGCCGGAATTCGTCGACTGGATCCGGTACCGAGGAGATCTGCC
GCC**CGATCGCC**

ATGGATCGCCACTCCAGCTACATCTTCATCTGGCTGCAGCTGGAGCTCTGCGCCATGGCCGTGCTGCTCA
CCAAAGGTGAAATTCGATGCTACTGTGATGCTGCCACTGTGTAGCCACTGGTTATATGTGTAATCTGA
GCTCAGCGCTGCTTCTCTAGACTTCTTGATCCTCAGAACTCAAATTCCTCACTACCCATGGCTGCCTG
GACTCTCTTGCAAGCACGACAGACATCTGCCAAGCCAAACAGGCCGAAACCACTCTGGCACCACCATAC
CCACATTGGAATGCTGTCATGAAGACATGTGCAATTACAGAGGGCTGCACGATGTTCTCTCTCTCCAG
GGGTGAGGCTCAGGACAAGGAAACAGGTATCAGCATGATGGTAGCAGAAACCTTATACCAAGGTGCAG
GAGCTGACTTCTTCCAAAGAGTTGTGGTCCGGGCAGCGGTCATTGCCGTGCCATTGCTGGAGGGCTGA
TTTTAGTGTGCTTATTATGTTGGCCCTGAGGATGCTTCGAAGTAAAAAAGAGGCTGCAGGATCAGCG
GCAACAGATGCTCTCCGTTTGCCTACAGCTTTCACGGACACCATTCAAAAAGGGCAGGTTGCAAG
TTAGACTTGGAATGCATGGTCCCGTCACTGGGCACGAGAAGTCTGTCTGACCTGTGATAAAATGAGAC
AAGCAGACCTCAGCAACGATAAGATCCTCTCGTTGTTCACTGGGCATGTACAGTGGGCACGGGAAGCT
GGAATTCGTA

ACGCGTACGCGGCCGCTCGAG - GFP Tag - GTTTAA



[View online »](#)

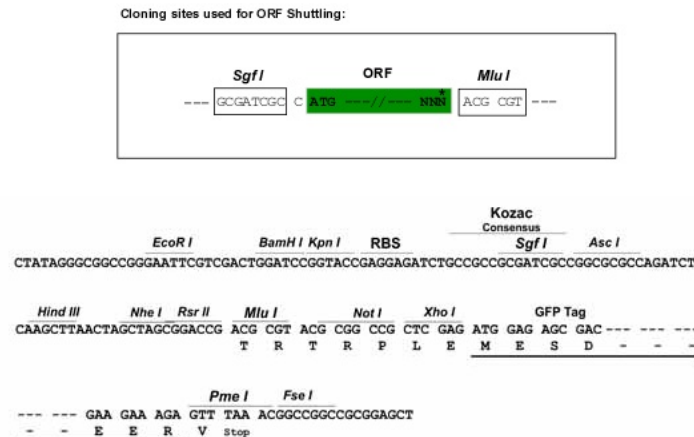
Protein Sequence: >RG200195 representing NM_012342
 Red=Cloning site Green=Tags(s)

MDRHSSYIFIWLQLELCAMAVLLTKGEIRCYCDAAHCVATGYMCKSEL SACFSRLLDPQNSNSPLTHGCL
 DSLASTTDICQAKQARNHSGTTIPTLECCHEDMCNYRGLHDVLSPPRGEASGQGNRYQH DGSRNLI TKVQ
 ELTSSKELWFRAAVIAVPIAGGLILVLLIMLALRMLRSENKRLQDQRQQML SRLHYSFHGHSKKGQVAK
 LDLECMVPVSGHENCLTCDKMRQADL SNDKILSLVHWGMYSHGKLEFV

TRTRPLE - GFP Tag - V

Restriction Sites: SgfI-MluI

Cloning Scheme:



ACCN: NM_012342

ORF Size: 780 bp

OTI Disclaimer: The molecular sequence of this clone aligns with the gene accession number as a point of reference only. However, individual transcript sequences of the same gene can differ through naturally occurring variations (e.g. polymorphisms), each with its own valid existence. This clone is substantially in agreement with the reference, but a complete review of all prevailing variants is recommended prior to use. [More info](#)

OTI Annotation: This clone was engineered to express the complete ORF with an expression tag. Expression varies depending on the nature of the gene.

Components: The ORF clone is ion-exchange column purified and shipped in a 2D barcoded Matrix tube containing 10ug of transfection-ready, dried plasmid DNA (reconstitute with 100 ul of water).

Reconstitution Method:

1. Centrifuge at 5,000xg for 5min.
2. Carefully open the tube and add 100ul of sterile water to dissolve the DNA.
3. Close the tube and incubate for 10 minutes at room temperature.
4. Briefly vortex the tube and then do a quick spin (less than 5000xg) to concentrate the liquid at the bottom.
5. Store the suspended plasmid at -20°C. The DNA is stable for at least one year from date of shipping when stored at -20°C.

Note: Plasmids are not sterile. For experiments where strict sterility is required, filtration with 0.22um filter is required.

RefSeq: [NM_012342.3](#)

RefSeq Size: 1732 bp

RefSeq ORF: 783 bp

Locus ID: 25805

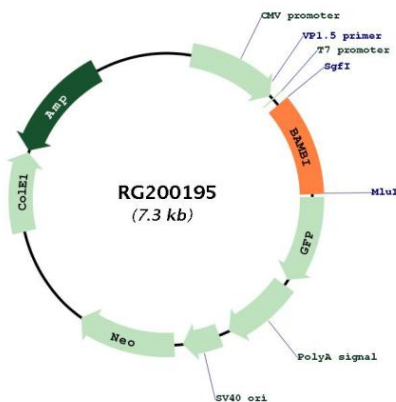
UniProt ID: [Q13145](#)

Cytogenetics: 10p12.1

Protein Families: Transmembrane

Gene Summary: This gene encodes a transmembrane glycoprotein related to the type I receptors of the transforming growth factor-beta (TGF-beta) family, whose members play important roles in signal transduction in many developmental and pathological processes. The encoded protein however is a pseudoreceptor, lacking an intracellular serine/threonine kinase domain required for signaling. Similar proteins in frog, mouse and zebrafish function as negative regulators of TGF-beta, which has led to the suggestion that the encoded protein may function to limit the signaling range of the TGF-beta family during early embryogenesis. [provided by RefSeq, Jul 2008]

Product images:



Circular map for RG200195