

Product datasheet for **RG200180**

KCTD5 (NM_018992) Human Tagged ORF Clone

Product data:

Product Type: Expression Plasmids
Product Name: KCTD5 (NM_018992) Human Tagged ORF Clone
Tag: TurboGFP
Symbol: KCTD5
Mammalian Cell Selection: Neomycin
Vector: pCMV6-AC-GFP (PS100010)
E. coli Selection: Ampicillin (100 ug/mL)
ORF Nucleotide Sequence: >RG200180 representing NM_018992
 Red=Cloning site Blue=ORF Green=Tags(s)

TTTTGTAATACGACTCACTATAGGGCGGCCGGGAATTCGTCGACTGGATCCGGTACCGAGGAGATCTGCC
 GCC**CGATCGCC**

ATGGCGGAGAATCACTGCGAGCTCCTGTGCGCCGGCCCGGGCGGCATCGGGGCGGGGCTGGGGGGCGGCC
 TGTGCCGCGCTGCAGCGCTGGGCTCGGCGCCCTGGCCAGCGCCCTGGCAGCGTGTCCAAGTGGGTCCG
 ACTCAACGTCGGCGGCACCTACTTCCTCACCCTCGGCAGACCCTGTGCCGGGACCCGAAATCCTTCCTG
 TACCGCTTATGCCAGGCCGATCCCGACCTGGACTCAGACAAGGATGAAACAGGCGCCTATTTAATCGACA
 GAGACCCACCTACTTTGGGCCGTGCTGAACCTACCTGAGACCGCAAGCTGGTGATTAACAAAGACCT
 CGCGGAGGAAGGAGTGTGGAGGAAGCAGAATTTTACAATATCACCTCATTAAATAAACTTGTAAGGAC
 AAAATTAGAGAACGAGACAGCAAAACATCGCAGGTGCCTGTGAAGCATGTGTACCGTGTGCTGCAGTGCC
 AGGAGGAGGAGCTCACGCAGATGGTGTCCACCATGTCCGACGGCTGGAAGTTCGAGCAGTTGGTCAGCAT
 CGGCTCCTTTACAATAATGGGAACGAAGACCAAGCCGAGTTCCTCTGTGTGGTGTCCAAGGAGCTGCAC
 AACACCCCGTACGGTACGGCCAGCGAGCCAGCGAGAAGCCAAGATTTGCAAGAACGAGGCTCAAGGA
 TG

ACGCGTACGCGGCCGCTCGAG - GFP Tag - GTTTAA

Protein Sequence: >RG200180 representing NM_018992
 Red=Cloning site Green=Tags(s)

MAENHCELLSPARGGIGAGLGGGLCRRCASAGLGALAQRPQSVSKWVRLNVGGTYFLTTRQTLCRDPKSF
 YRLCQADPDLSDKDETGAYLIDRDPTYFGPVLNYLRHGKLVINKDLAEEGVLEEAFYINITSLIKLVKD
 KIRERDSKTSQVPVKHVYRVLQCQEEELTQMVSTMSDGWKFQELVSISSYNYGNEDQAEFLCVVSKELH
 NTPYGTASEPSEKAKILQERGRM

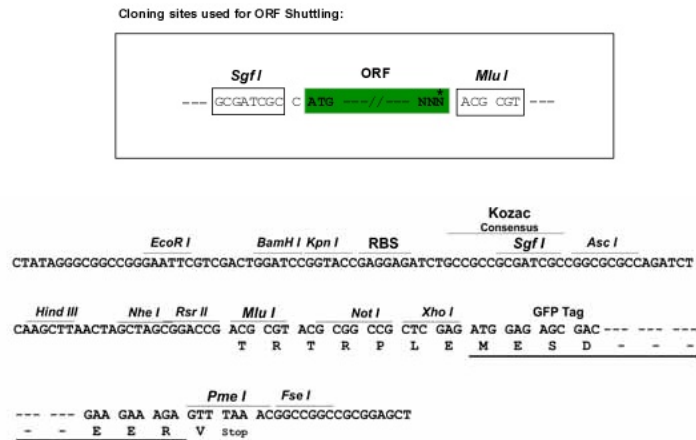
TRTRPLE - GFP Tag - V



[View online »](#)

Restriction Sites: SgfI-MluI

Cloning Scheme:



ACCN: NM_018992

ORF Size: 702 bp

OTI Disclaimer: The molecular sequence of this clone aligns with the gene accession number as a point of reference only. However, individual transcript sequences of the same gene can differ through naturally occurring variations (e.g. polymorphisms), each with its own valid existence. This clone is substantially in agreement with the reference, but a complete review of all prevailing variants is recommended prior to use. [More info](#)

OTI Annotation: This clone was engineered to express the complete ORF with an expression tag. Expression varies depending on the nature of the gene.

Components: The ORF clone is ion-exchange column purified and shipped in a 2D barcoded Matrix tube containing 10ug of transfection-ready, dried plasmid DNA (reconstitute with 100 ul of water).

Reconstitution Method:

1. Centrifuge at 5,000xg for 5min.
2. Carefully open the tube and add 100ul of sterile water to dissolve the DNA.
3. Close the tube and incubate for 10 minutes at room temperature.
4. Briefly vortex the tube and then do a quick spin (less than 5000xg) to concentrate the liquid at the bottom.
5. Store the suspended plasmid at -20°C. The DNA is stable for at least one year from date of shipping when stored at -20°C.

RefSeq: [NM_018992.4](#)

RefSeq Size: 2476 bp

RefSeq ORF: 705 bp

Locus ID: 54442

UniProt ID: [Q9NXV2](#)

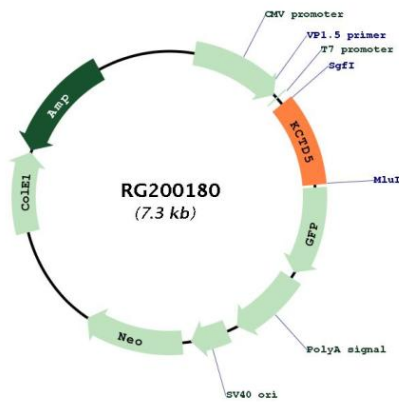
Cytogenetics: 16p13.3

Domains: BTB, K_tetra

Protein Families: Ion Channels: Other

Gene Summary: Its interaction with CUL3 suggests that it may act as a substrate adapter in some E3 ligase complex (PubMed:18573101). Does not affect the function of Kv channel Kv2.1/KCNB1, Kv1.2/KCNA2, Kv4.2/KCND2 and Kv3.4/KCNC4 (PubMed:19361449).[UniProtKB/Swiss-Prot Function]

Product images:



Circular map for RG200180