

## Product datasheet for **RG200178**

### FBXL12 (NM\_017703) Human Tagged ORF Clone

#### Product data:

Product Type:	Expression Plasmids
Product Name:	FBXL12 (NM_017703) Human Tagged ORF Clone
Tag:	TurboGFP
Symbol:	FBXL12
Synonyms:	Fbl12
Mammalian Cell Selection:	Neomycin
Vector:	pCMV6-AC-GFP (PS100010)
E. coli Selection:	Ampicillin (100 ug/mL)
ORF Nucleotide Sequence:	>RG200178 representing NM_017703 Red=Cloning site Blue=ORF Green=Tags(s)

TTTTGTAATACGACTCACTATAGGGCGGCCGGAATTCGTCGACTGGATCCGGTACCGAGGAGATCTGCC  
GCC**CGATCGCC**

ATGGCGACTTTGGTCGAAGTCCCGGACTCGGTCCTGCTCGAGATCTTCTTACCTCCCGGTACGGGACC  
GGATCCGCATCTCCAGGGTCTGTCACCGCTGGAAGAGGCTGGTGGACGACCGGTGGCTGTGGCGACATGT  
CGACCTGACGCTCTACACGATGCGACCTAAAGTCATGTGGCACCTCCTCGAAGGTACATGGCATCCCGG  
CTCCATTCCTGCGGATGGTGGCTACCTGTTCTCTGGCTCCAGGCCCCAGTTGTCCCCTGCTCTGT  
TGAGAGCCCTGGGCCAGAAGTGCCCAACCTGAAGCGCCTCTGCCTGCATGTGGCCGACCTGAGCATGGT  
GCCCATCACAGCCTGCCAGCACCTTGAGGACCTGGAGCTGCACAGCTGCGAGATCTCCATGGCCTGG  
CTCCACAAGCAGCAGGACCCACCGTGCTGCCCTGCTTGAATGCATCGTGTGGACCGCTCCCGCCT  
TCCGTGACGAGCACCTGCAGGGCTGACGCGCTTCCGGGCTTGGCTCGCTGGTGTGGGTGGTACCTA  
CCGTGTGACCGAGACAGGGCTGGATGCTGGCCTGCAGGAGCTCAGCTATCTGCAGAGGCTTGAGGTGCTG  
GGCTGCACCCTGTCTGCCGACAGCACCTGCTGGCCATCAGCCGCCACCTCCGAGATGTGCCAAGATCC  
GGCTGACCGTGAGGGGCTCTCTGCCCTGGCTGGCTGTGCTGGAGGAATGCCGGCCTGGAGAGTCT  
GTGCTGCAGGGTCCCTCGTCAACCCAGAAATGCCCTCCCCACTGAAATCCTCTCCTCCTGCCTCACT  
ATGCCAAAGCTCAGAGTCTTGAGCTGCAGGGGCTGGGGTGGGAGGGTCAGGAGCGGAGAAGATCCTGT  
GTAAGGGGCTGCCCACTGTATGGTCATCGTCAGGGCTTCCCCAAAGAGTCTATGGACTGGTGGATG

**ACGCGT**ACGCGGCCGCTCGAG - GFP Tag - GTTTAA



[View online »](#)

**Protein Sequence:** >RG200178 representing NM\_017703  
 Red=Cloning site Green=Tags(s)

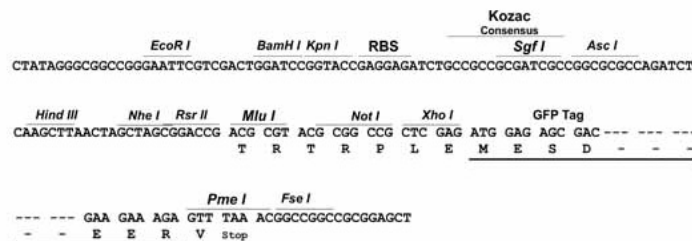
MATLVLPDSVLLIEFVSYLPVRDRIRISRVCHRWKRLVDDRWLWRHVDLTLTYMRPKVMWHLRRYMASR  
 LHSLRMGGYLFSGSQAPQLSPALLRALGQKCPNLKRLCLHVADLSMPVITSLPSTLRTLLEHSCEISMAW  
 LHKQDPTVLPILLECIVLDRVPAFRDEHLQGLTRFRALRSLVLGGTYRVETETGLDAGLQELSYLQRLEVL  
 GCTL SADSTLLAISRHLDVVRKIRLTVRGLSAPGLAVLEGMPALESCLQGPLVTPEMPSPTEILSSCLT  
 MPKLRVLELQGLGWEGQEAEEKILCKGLPHCMVIVRACPKESMDWWM

TRTRPLE - GFP Tag - V

**Restriction Sites:** SgfI-MluI

**Cloning Scheme:**

Cloning sites used for ORF Shuttling:



**ACCN:** NM\_017703

**ORF Size:** 978 bp

**OTI Disclaimer:** The molecular sequence of this clone aligns with the gene accession number as a point of reference only. However, individual transcript sequences of the same gene can differ through naturally occurring variations (e.g. polymorphisms), each with its own valid existence. This clone is substantially in agreement with the reference, but a complete review of all prevailing variants is recommended prior to use. [More info](#)

**OTI Annotation:** This clone was engineered to express the complete ORF with an expression tag. Expression varies depending on the nature of the gene.

**Components:** The ORF clone is ion-exchange column purified and shipped in a 2D barcoded Matrix tube containing 10ug of transfection-ready, dried plasmid DNA (reconstitute with 100 ul of water).

**Reconstitution Method:**

1. Centrifuge at 5,000xg for 5min.
2. Carefully open the tube and add 100ul of sterile water to dissolve the DNA.
3. Close the tube and incubate for 10 minutes at room temperature.
4. Briefly vortex the tube and then do a quick spin (less than 5000xg) to concentrate the liquid at the bottom.
5. Store the suspended plasmid at -20°C. The DNA is stable for at least one year from date of shipping when stored at -20°C.

**RefSeq:** [NM\\_017703.1](#), [NP\\_060173.1](#)

**RefSeq Size:** 1876 bp

**RefSeq ORF:** 981 bp

**Locus ID:** 54850

**UniProt ID:** [Q9NXX8](#)

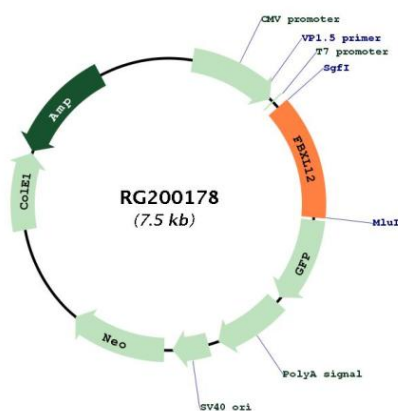
**Cytogenetics:** 19p13.2

**Domains:** F-box

**Protein Families:** Druggable Genome

**Gene Summary:** Members of the F-box protein family, such as FBXL12, are characterized by an approximately 40-amino acid F-box motif. SCF complexes, formed by SKP1 (MIM 601434), cullin (see CUL1; MIM 603134), and F-box proteins, act as protein-ubiquitin ligases. F-box proteins interact with SKP1 through the F box, and they interact with ubiquitination targets through other protein interaction domains (Jin et al., 2004 [PubMed 15520277]).[supplied by OMIM, Mar 2008]

### Product images:



Circular map for RG200178