

Product datasheet for **RG200140**

ANKZF1 (NM_001042410) Human Tagged ORF Clone

Product data:

Product Type:	Expression Plasmids
Product Name:	ANKZF1 (NM_001042410) Human Tagged ORF Clone
Tag:	TurboGFP
Symbol:	ANKZF1
Synonyms:	Vms1; ZNF744
Mammalian Cell Selection:	Neomycin
Vector:	pCMV6-AC-GFP (PS100010)
E. coli Selection:	Ampicillin (100 ug/mL)



[View online »](#)

ORF Nucleotide Sequence:

>RG200140 representing NM_001042410
 Red=Cloning site Blue=ORF Green=Tags(s)

TTTTGTAATACGACTCACTATAGGGCGGCCGGGAATTCGTCGACTGGATCCGGTACCGAGGAGATCTGCC
 GCC**CGGATCGCC**

ATGTCGCGGCTCCAGATGCAGCCCCGGCTCCTGCGTCGATCTCCCTGTTTGACCTCAGCGCGGATGCTC
 CGGTCTTTCAGGGCCTGAGCCTGGTGAGCCACGCGCCTGGGGAGGCTCTGGCCCGGGCTCCGCGTACTTC
 CTGTTCCAGGCTCAGGGGAGAGAGAAAGCCAGAAAGAAAGCTACTCCAGGGTCTATGGATATTTTCAGAG
 AAGTTATTTTGTCAACTTGTGACCAGACCTTCCAGAACCACCAAGAACAGAGGGAACATTATAAGCTTG
 ACTGGCATCGGTTAACTAAAGCAACGCTCAAGGACAAGCCTCTCTGTCTGCCCTGGACTTTGAAAA
 GCAGAGCTCCACAGGAGATCTTCCAGCATCTCGGGATCAGAAGACTCAGACTCAGCCAGTGAGGAGGAC
 TTGCAGACACTGGATCGGGAGAGGGCTACATTTGAGAAGTTGAGCCGACCCCGAGCTTTTACCCTCATC
 GAGTTCTTTTCCAGAATGCCAGGGCCAGTTTCTTTATGCCTACCGCTGTGTCTAGGCCCTCATCAGGA
 TCCCCCAGAAGAGGCAGAACTGTGCTACAGAACCTGCAAAGTAGAGGTCCAGAGACTGCGTGGTGCTC
 ATGGCTGCAGCTGGGCACCTTTGCTGGTGCTATATTTCAAGGAAGAGAAGTGGTGACACACAAAACCTTTTC
 ACCGCTATACGGTTCGGGCCAAGCGGGGCACAGCCAGGGGCTTCGGGATGCCCGAGGTGGGCCATCACA
 CTCTGCTGGAGCCAACCTGAGGGCCTACAATGAAGCCACACTATATAAGGATGTTTCGTGACCTGCTGGCA
 GGGCCAAGCTGGGCTAAGGCGCTGGAGGAGGCTGGTACAATACTGTTGCTGCTCCCCGCTCTGGCCGGT
 CTTTGTCTTTGGAGGCAAGGGAGCACCCCTGCAAAGGGGGATCCCCGACTTTGGGATATCCCCCTCGC
 CACCCGCAGACCCACCTTCCAAGAGCTACAGCGTGTGCTCCATAAGCTGACCACTTTGCATGTCTATGAA
 GAAGACCTCGGGAAGCAGTCAGACTGCACCTCAGACACACTGAAAACAGTAAGAGAGGAGAGAA
 AGAAGCTACTGAGGAAGAAATAAGAAAGATCTGCAGGGATGAAAAGGAAGCGCTGGGGCAGAATGAGGA
 ATCTCCCAAACAGGGTTACAGGTCGGAGGGAGAAGATGGCTTTCAGGTAGAGTTGGAGCTAGTGGAGTTG
 ACTGTGGGGACTCTGGATCTTTGTGAGTCTGAAGTATTGCCAAGCGGAGGAGGAGAAAAAGGAATAAGA
 AGGAGAAAAGCCGAGACCAGGAGGCTGGGGCACATCGACTCTTCTCCAGCAAACCAAGAAGAGGAGCC
 TTCCACACAGTCATCCCAGGCAGTTGCTGCCCCCTTGGGCCCTTGTGGATGAGGCCAAAGCCCTGGT
 CAGCCAGAGCTCTGGAATGCACTGCTTGTGCTTGCCGAGCTGGAGATGTTGGAGTGCTAAAGCTGCAGC
 TAGCTCCCAGCCCTGCAGACCTAGAGTTCTGTCTCTGCTCAGTGCCCCCTTGGGCTCCGGTGGCTTTAC
 TCTCTGCATGCAGCAGCTGCAGCTGGAAGAGGCTCAGTGGTTCGTCTGCTGCTGGAAGCAGGTGCTGAC
 CCCACTGTGCAGGACTCTCGGGCCCGCCACCTTATACTGTTGCGGCTGACAAATCAACACGTAATGAGT
 TCCGAAGTTTCATGGAGAAGAATCCAGATGCCTACGATTACAACAAGGCTCAGGTGCCAGGACCATTGAC
 ACCAGAAATGGAGGCACGGCAGGCTACACGGAAGGGAGCAGAAGGCAGCCCGGCGGCAACGGGAGGAA
 CAGCAGCAGAGGCAGCAGGAGCAGGAGGAGCGTGAACGAGAAGAGCAGCGCGGATTTGCCGCCCTCAGTG
 ACCGAGAGAAGAGAGCTCTGGCTGCAGAGCGCCGACTCGCTGCCAGTTGGGAGCCCTACCTCTCCAAT
 CCCTGACTCTGCAATCGTCAATACTCGACGCTGCTGGAGTTGTGGGGCATCCCTCCAAGGCTGACTCCC
 TTTCACTACCTCGACTTCTTTCTGCTCCACAGTTCGCTCCAGGATCATCGCCGTCAGGCAGGGAGGC
 CCTCTTCC

ACGCGTACGCGGCCGCTCGAG - GFP Tag - GTTTAA

Protein Sequence: >RG200140 representing NM_001042410
 Red=Cloning site Green=Tags(s)

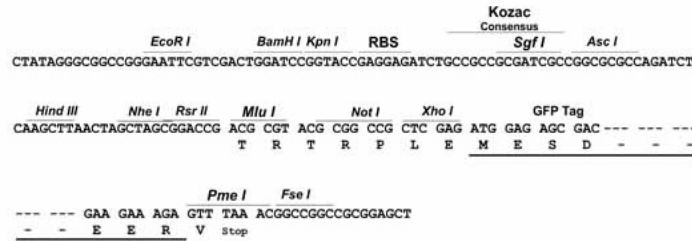
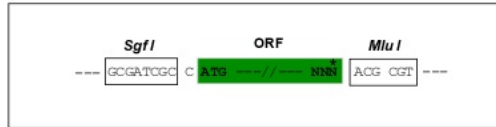
MSPAPDAAPAPASISLFDLSADAPVFQGLSLVSHAPGEALARAPRTSCSGSGERESPERKLLQGPMDISE
 KLFCDSTCDQTFQNHQEQREHYKLDWHRFNLKQRLKDKPLLALDFEKQSSTGDLSSISGSESDSDSASEED
 LQTLDRERATFEKLSRPPGFYPHRVLFQNAQQGFLYAYRCVLPHPDPPPEAEALLLQNLQSRGPRDCVVL
 MAAAGHFAGAIHQREVVTHKTFHRYTVRAKRGT AQGLRDARGGPPSHSAGANLRRYNEATLYKDVRDLLA
 GPSWAKALEEAGTILLRAPRSGRSLFFGGKGAPLQRGDPRLWDIPLATRRPTFQELQRVHLKLTTLHVEE
 EDPREAVRLHSPQTHWKTVREERKPKTEEEIRKICRDEKEALGQNEESPKQSGSSEGEDGFQVELELVEL
 TVGTLDLCESEVLPKRRRRKRNKKEKSRDQEGAHRTLLQQTQEEEPSTQSSQAVAAPLGPLLDEAKAPG
 QPELWNALLAACRAGDVGVLKQLLAPSPADPRVLSLLSAPLGGSGFTLLHAAAAAGRGSVVRLLLEAGAD
 PTVQDSRARPPYVAADKSTRNEFRFMEKNPDAYDYNKAQVPGPLTPEMEARQATRKREQAARRQREE
 QQQRQQEQEEREREERQRF AALSDREKRALAAERRLAAQLGAPTSP IPDSAIVNTRRCWSCGASLQGLTP
 FHYLDFSF CSTRCLQDHRRQAGRPSS

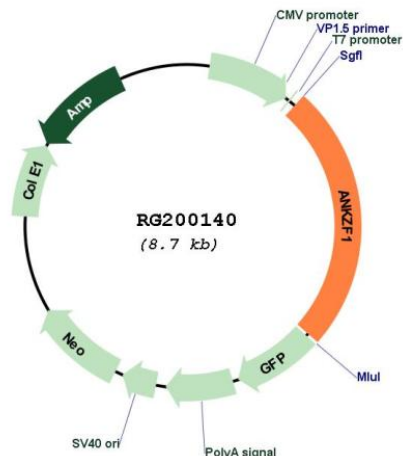
TRTRPLE - GFP Tag - V

Restriction Sites: SgfI-MluI

Cloning Scheme:

Cloning sites used for ORF Shutting:



Plasmid Map:


ACCN: NM_001042410

ORF Size: 2178 bp

OTI Disclaimer: The molecular sequence of this clone aligns with the gene accession number as a point of reference only. However, individual transcript sequences of the same gene can differ through naturally occurring variations (e.g. polymorphisms), each with its own valid existence. This clone is substantially in agreement with the reference, but a complete review of all prevailing variants is recommended prior to use. [More info](#)

OTI Annotation: This clone was engineered to express the complete ORF with an expression tag. Expression varies depending on the nature of the gene.

Components: The ORF clone is ion-exchange column purified and shipped in a 2D barcoded Matrix tube containing 10ug of transfection-ready, dried plasmid DNA (reconstitute with 100 ul of water).

Reconstitution Method:

1. Centrifuge at 5,000xg for 5min.
2. Carefully open the tube and add 100ul of sterile water to dissolve the DNA.
3. Close the tube and incubate for 10 minutes at room temperature.
4. Briefly vortex the tube and then do a quick spin (less than 5000xg) to concentrate the liquid at the bottom.
5. Store the suspended plasmid at -20°C. The DNA is stable for at least one year from date of shipping when stored at -20°C.

RefSeq: [NM_001042410.2](#)

RefSeq Size: 2521 bp

RefSeq ORF: 2181 bp

Locus ID: 55139

UniProt ID: [Q9H8Y5](#)

Cytogenetics: 2q35

Gene Summary: Plays a role in the cellular response to hydrogen peroxide and in the maintenance of mitochondrial integrity under conditions of cellular stress (PubMed:28302725). Involved in the endoplasmic reticulum (ER)-associated degradation (ERAD) pathway (By similarity). [UniProtKB/Swiss-Prot Function]