

Product datasheet for **RG200104**

Aspartyl Aminopeptidase (DNPEP) (NM_012100) Human Tagged ORF Clone

Product data:

Product Type:	Expression Plasmids
Product Name:	Aspartyl Aminopeptidase (DNPEP) (NM_012100) Human Tagged ORF Clone
Tag:	TurboGFP
Symbol:	Aspartyl Aminopeptidase
Synonyms:	ASPEP; DAP
Mammalian Cell Selection:	Neomycin
Vector:	pCMV6-AC-GFP (PS100010)
E. coli Selection:	Ampicillin (100 ug/mL)



[View online »](#)

ORF Nucleotide Sequence:

>RG200104 representing NM_012100
 Red=Cloning site Blue=ORF Green=Tags(s)

TTTTGTAATACGACTCACTATAGGGCGGCCGGAATTCGTCGACTGGATCCGGTACCGAGGAGATCTGCC
 GCCGCGATCGCC

ATGCAAGTGGCCATGAACGGTAAGGCCGCAAAGAGGCGGTGCAGACTGCGGCTAAGGAACCTCAAGT
 TCGTGAACCGGAGTCCCTCTCCTTTCCATGCTGTGGCTGAATGCCGCAACCGCCTTCTCCAGGCTGGCTT
 CAGTGAACCAAGGAGACTGAGAAATGGAATATTAAGCCCGAGAGCAAGTACTTCATGACCAGAACTCC
 TCCACCATCATAGCTTTTGTGTAGGGGCCAGTACGTTCTGGCAATGGCTTACGCTCATCGGGGCC
 ACACGGACAGCCCTGCCTCCGGGTGAAACGTCGGTCTCGCCGACCCAGGTGGGCTTCCAGCAAGTCGG
 TGTGGAGACCTATGGTGGTGGGATCTGGAGCACCTGGTTTGACCGTGACCTGACTCTGGTGGACGCGTC
 ATTGTCAAGTGCCTACCTCAGTCGGTGGAGCAGCAGCTGGTGCACGTGGAGCGGCCATTCTTCGCA
 TCCACACCTGGCCATCCATCTGCAGCGAAATATCAACGAGAACTTGGGCCAACACAGAGATGCATCT
 AGTCCCCATTCTGCCACAGCCATCCAGGAGGAGCTGGAGAAGGGGACTCCTGAGCCAGGCCTCTCAAT
 GCTGTGGATGAGCGGCACCATTCGGTCCCTCATGTCCCTGCTCTGTGCCATCTGGGGCTGAGCCCCAAGG
 ACATAGTGGAGATGGAGCTCTGCCTTGACAGACACCCAGCCTGCGGTCTTGGTGGTGCCTATGATGAGTT
 CATCTTTGCTCCTCGGCTGGACAATCTGCACAGCTGCTTCTGTGCCCTGCAGGCCTTGATAGATTCTGT
 GCAGGCCCTGGCTCCCTGGCCACAGAGCCTCACGTGCGCATGGTACACTCTATGACAACGAAGAGGTGG
 GGTCTGAGAGTGACAGGGAGCAGTCACTGCTGACAGAGCTGGTGTGCGGCGGATCTCAGCCTCGTG
 CCAGCACCCGACAGCCTTCGAGGAAGCCATACCAAGTCTTTCATGATCAGCGCAGACATGGCCATGCT
 GTGCATCCCAACTACCTGGACAAGCATGAGGAGAACCACCGGCCTTTATCCACAAGGGCCCCGTGATCA
 AGGTGAACAGCAAGCAACGCTATGCTTCAAACGCGGTGTGACAGGCCCTGATCCGAGAGGTGGCCAA
 AGTCAAGGTCCCCTGCAGGATCTCATGGTCCGGAATGACACCCCTGTGGAACCACTTGGACCTATC
 TTGGCTTCTCGGCTGGGCTGCGGGTGTGATTTAGGCAGCCCCAACTGGCCATGCACTCTATCCGGG
 AGATGGCTGCACCACAGGAGTCTCCAGACCCTCACCTCTTCAAGGGCTTCTTTGAGCTGTTCCCTTC
 TCTAAGCCATAATCTCTTAGTGGAT

AGCGGACCGACGCGTACGCGGCCGCTCGAG – GFP Tag – GTTTAA

Protein Sequence:

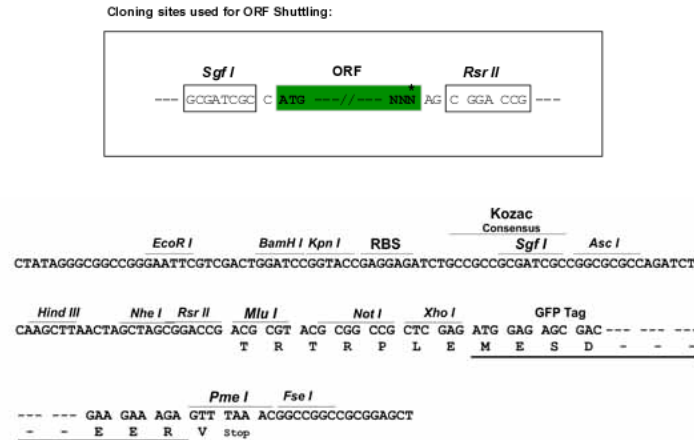
>RG200104 representing NM_012100
 Red=Cloning site Green=Tags(s)

MQVAMNGKARKEAVQTAAKELLKFVNRSPSPFHAVAECRNRLQAGFSELKETEKWNIKPESKYFMTRNS
 STIIAFVGGQYVPGNGFSLIGAHTDSPCLRVKRRSRSSQVGFQVGVETYGGGIWSWTFDRDLTLGRV
 IVKCPSTGRLEQQLVHVERPILRIPHLAIHLQRNINENFGPNTEMHLVPIIATAIQEELEKGTPEPGLN
 AVDERHHSVLMSELLCAHLGLSPKDIVEMELCLADTQPAVLGGAYDEFIFAPRLDNLHSCFCALQALIDSC
 AGPGSLATEPHVRMVTLYDNEEVGSESAQGAQSLLTELVLRRISASCQHPTAFEEAIPKFSMISADMAHA
 VHPNYLDKHEENHRPLFHKGPVIKVNKQRYASNAVSEALIREVANKVKVPLQDLMVRNDTPCGTTIGPI
 LASRLGLRVLDLQSPQLAMHSIREMACTGVLQTLTLFKGFFELFPSLSHNLVLD

SGPTRRRLE – GFP Tag – V

Restriction Sites:

Sgfl-RsrII

Cloning Scheme:


ACCN: NM_012100

ORF Size: 1425 bp

OTI Disclaimer: The molecular sequence of this clone aligns with the gene accession number as a point of reference only. However, individual transcript sequences of the same gene can differ through naturally occurring variations (e.g. polymorphisms), each with its own valid existence. This clone is substantially in agreement with the reference, but a complete review of all prevailing variants is recommended prior to use. [More info](#)

OTI Annotation: This clone was engineered to express the complete ORF with an expression tag. Expression varies depending on the nature of the gene.

Components: The ORF clone is ion-exchange column purified and shipped in a 2D barcoded Matrix tube containing 10ug of transfection-ready, dried plasmid DNA (reconstitute with 100 ul of water).

Reconstitution Method:

1. Centrifuge at 5,000xg for 5min.
2. Carefully open the tube and add 100ul of sterile water to dissolve the DNA.
3. Close the tube and incubate for 10 minutes at room temperature.
4. Briefly vortex the tube and then do a quick spin (less than 5000xg) to concentrate the liquid at the bottom.
5. Store the suspended plasmid at -20°C. The DNA is stable for at least one year from date of shipping when stored at -20°C.

RefSeq: [NM_012100.1](#), [NP_036232.1](#)

RefSeq Size: 2438 bp

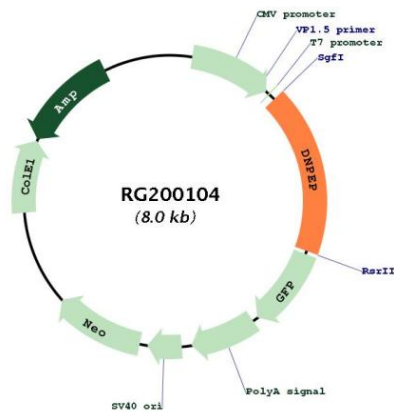
RefSeq ORF: 1458 bp

Locus ID: 23549

UniProt ID: [Q9ULA0](#)

Cytogenetics: 2q35
Domains: Peptidase_M18
Protein Families: Druggable Genome, Protease
Gene Summary: The protein encoded by this gene is an aminopeptidase which prefers acidic amino acids, and specifically favors aspartic acid over glutamic acid. It is thought to be a cytosolic protein involved in general metabolism of intracellular proteins. Several transcript variants encoding different isoforms have been found for this gene. [provided by RefSeq, Jan 2016]

Product images:



Circular map for RG200104