

Product datasheet for **RG200079**

SCAND1 (NM_033630) Human Tagged ORF Clone

Product data:

Product Type: Expression Plasmids
Product Name: SCAND1 (NM_033630) Human Tagged ORF Clone
Tag: TurboGFP
Symbol: SCAND1
Synonyms: RAZ1; SDP1
Mammalian Cell Selection: Neomycin
Vector: pCMV6-AC-GFP (PS100010)
E. coli Selection: Ampicillin (100 ug/mL)
ORF Nucleotide Sequence: >RG200079 representing NM_033630
 Red=Cloning site Blue=ORF Green=Tags(s)

TTTTGTAATACGACTCACTATAGGGCGGCCGGAATTCGTCGACTGGATCCGGTACCGAGGAGATCTGCC
 GCC**CGATCGCC**

ATGGCGGCTACGGAGCCGATCTTGGCGGCCACTGGGAGTCCCAGCGCGGTGCCACCGGAGAACTGGAAG
 GAGCCGGTTCGAGCTCAGCCCCTGAGCGTAACTGTGTGGGCTCCTCGCTGCCAGAGGCCTCACCGCCTGC
 CCCTGAGCCTCCAGTCCAACGCGCGGTCCCTGAAGCCATCCCTACGCCCCGAGCTGCGGCCTCCGCG
 GCCCTGGAGCTGCCTCTCGGGCCCGCACCCGTGAGCGTAGCGCCTCAGGCCGAAGCTGAAGCGCGTCCA
 CACCAGGCCCGCGGCTCTAGACTCGGTCCCAGACGTTCCGCCAGCGTTCCGGCAGTTCGGCTACCA
 GGATGCGGCGGGTCCCCGGGAGGCTTCCGGCAGCTGCGGGAGCTGTCCCGCCAGTGGCTGCGGCCTGAC
 ATCCGCACCAAGGAGCAGATCGTGGAGATGCTGGTGAAGAGCAGCTGCTCGCCATCCTGCCGAGGCGG
 CTCGGGCCCGGGATCCGCCGCCGACGGATGTGCGCATCACTGGC

ACGCGTACGCGGCCGCTCGAG - GFP Tag - GTTTAA

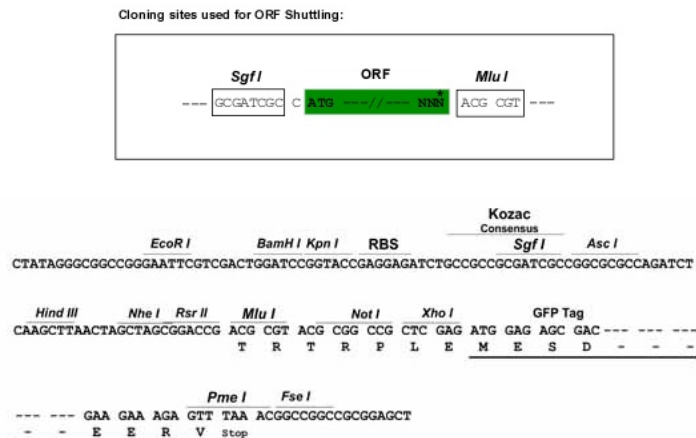
Protein Sequence: >RG200079 representing NM_033630
 Red=Cloning site Green=Tags(s)

MAATEPILAATGSPAAPVPEKLEGAGSSSAPERNCVSSSLPEASPPAPEPSSPNAAVPEAIPTPRAAASA
 ALELPLGPAPVSVAPQAEAEARSTPGPAGSRLGPETFRQFRQFRYQDAAGPREAFRQLRELRSQWLRPD
 IRTKEQIVEMLVQEQLLAILPEAARARRIRRTDVRITG

TRTRPLE - GFP Tag - V

Restriction Sites: Sgfl-MluI



Cloning Scheme:


ACCN: NM_033630

ORF Size: 537 bp

OTI Disclaimer: The molecular sequence of this clone aligns with the gene accession number as a point of reference only. However, individual transcript sequences of the same gene can differ through naturally occurring variations (e.g. polymorphisms), each with its own valid existence. This clone is substantially in agreement with the reference, but a complete review of all prevailing variants is recommended prior to use. [More info](#)

OTI Annotation: This clone was engineered to express the complete ORF with an expression tag. Expression varies depending on the nature of the gene.

Components: The ORF clone is ion-exchange column purified and shipped in a 2D barcoded Matrix tube containing 10ug of transfection-ready, dried plasmid DNA (reconstitute with 100 ul of water).

Reconstitution Method:

1. Centrifuge at 5,000xg for 5min.
2. Carefully open the tube and add 100ul of sterile water to dissolve the DNA.
3. Close the tube and incubate for 10 minutes at room temperature.
4. Briefly vortex the tube and then do a quick spin (less than 5000xg) to concentrate the liquid at the bottom.
5. Store the suspended plasmid at -20°C. The DNA is stable for at least one year from date of shipping when stored at -20°C.

RefSeq: [NM_033630.1](#), [NP_361012.1](#)

RefSeq Size: 840 bp

RefSeq ORF: 540 bp

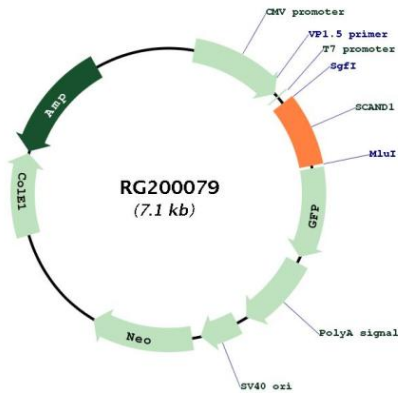
Locus ID: 51282

UniProt ID: [P57086](#)

Cytogenetics: 20q11.23
Domains: LER
Protein Families: Transcription Factors

Gene Summary: This gene encodes a SCAN box domain-containing protein. The SCAN domain is a highly conserved, leucine-rich motif of approximately 60 aa originally found within a subfamily of zinc finger proteins. This gene belongs to a family of genes that encode an isolated SCAN domain, but no zinc finger motif. This protein binds to and may regulate the function of the transcription factor myeloid zinc finger 1B. Alternate splicing results in multiple transcript variants.[provided by RefSeq, Jan 2011]

Product images:



Circular map for RG200079