

Product datasheet for **RG200054**

RPL36 (NM_015414) Human Tagged ORF Clone

Product data:

Product Type: Expression Plasmids
Product Name: RPL36 (NM_015414) Human Tagged ORF Clone
Tag: TurboGFP
Symbol: RPL36
Synonyms: L36
Mammalian Cell Selection: Neomycin
Vector: pCMV6-AC-GFP (PS100010)
E. coli Selection: Ampicillin (100 ug/mL)
ORF Nucleotide Sequence: >RG200054 representing NM_015414
Red=Cloning site **Blue**=ORF **Green**=Tags(s)

TTTTGTAATACGACTCACTATAGGGCGGCCGGAATTCGTCGACTGGATCCGGTACCGAGGAGATCTGCC
GCC**CGATCGCC**

ATGGCCCTACGCTACCCTATGGCCGTGGGCCTCAACAAGGGCCACAAAGTGACCAAGAACGTGAGCAAGC
CCAGGCACAGCCGACGCCGCGGGCGTCTGACCAAAACACCAAGTTCGTGCGGGACATGATTCGGGAGGT
GTGTGGCTTGGCCGTACGAGCGGCGCCATGGAGTTACTGAAGGTCTCCAAGGACAAACGGGCCCTC
AAATTTATCAAGAAAAGGGTGGGACGCACATCCGCGCCAAGAGGAAGCGGGAGGAGCTGAGCAACGTAC
TGCCGCCATGAGGAAAGCTGCTCCAAGAAAGAC

ACGCGTACGCGGCCGCTCGAG - GFP Tag - GTTTAA

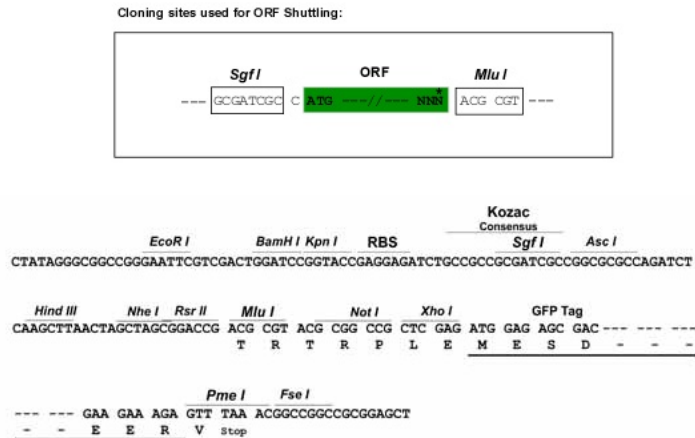
Protein Sequence: >RG200054 representing NM_015414
Red=Cloning site **Green**=Tags(s)
MALRYPMAVGLNKGHKVTKNVSKPRHSRRRRLTKHTKFVRDMIREVCGFAPYERRAMELLKVSQDKRAL
KFIKKRVGTHIRAKRKREELSNVLAAMRKAANKD

TRTRPLE - GFP Tag - V

Restriction Sites: Sgfl-MluI



[View online »](#)

Cloning Scheme:


ACCN: NM_015414

ORF Size: 315 bp

OTI Disclaimer: The molecular sequence of this clone aligns with the gene accession number as a point of reference only. However, individual transcript sequences of the same gene can differ through naturally occurring variations (e.g. polymorphisms), each with its own valid existence. This clone is substantially in agreement with the reference, but a complete review of all prevailing variants is recommended prior to use. [More info](#)

OTI Annotation: This clone was engineered to express the complete ORF with an expression tag. Expression varies depending on the nature of the gene.

Components: The ORF clone is ion-exchange column purified and shipped in a 2D barcoded Matrix tube containing 10ug of transfection-ready, dried plasmid DNA (reconstitute with 100 ul of water).

Reconstitution Method:

1. Centrifuge at 5,000xg for 5min.
2. Carefully open the tube and add 100ul of sterile water to dissolve the DNA.
3. Close the tube and incubate for 10 minutes at room temperature.
4. Briefly vortex the tube and then do a quick spin (less than 5000xg) to concentrate the liquid at the bottom.
5. Store the suspended plasmid at -20°C. The DNA is stable for at least one year from date of shipping when stored at -20°C.

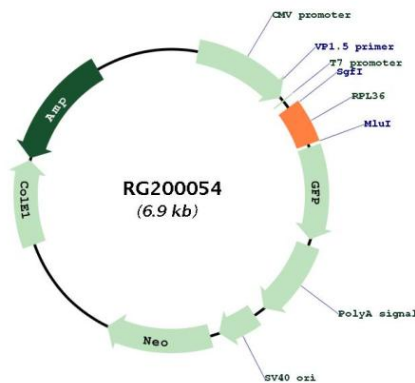
RefSeq: [NM_015414.4](#)

RefSeq Size: 557 bp

RefSeq ORF: 318 bp

Locus ID:	25873
UniProt ID:	Q9Y3U8
Cytogenetics:	19p13.3
Domains:	Ribosomal_L36e
Protein Families:	Druggable Genome
Protein Pathways:	Ribosome
Gene Summary:	Ribosomes, the organelles that catalyze protein synthesis, consist of a small 40S subunit and a large 60S subunit. Together these subunits are composed of 4 RNA species and approximately 80 structurally distinct proteins. This gene encodes a ribosomal protein that is a component of the 60S subunit. The protein belongs to the L36E family of ribosomal proteins. It is located in the cytoplasm. Transcript variants derived from alternative splicing exist; they encode the same protein. As is typical for genes encoding ribosomal proteins, there are multiple processed pseudogenes of this gene dispersed through the genome. [provided by RefSeq, Jul 2008]

Product images:



Circular map for RG200054