

Product datasheet for **RG200038**

YTHDF2 (NM_016258) Human Tagged ORF Clone

Product data:

Product Type:	Expression Plasmids
Product Name:	YTHDF2 (NM_016258) Human Tagged ORF Clone
Tag:	TurboGFP
Symbol:	YTHDF2
Synonyms:	CAHL; DF2; HGRG8; NY-REN-2
Mammalian Cell Selection:	Neomycin
Vector:	pCMV6-AC-GFP (PS100010)
E. coli Selection:	Ampicillin (100 ug/mL)



[View online »](#)

ORF Nucleotide Sequence:

>RG200038 representing NM_016258
 Red=Cloning site Blue=ORF Green=Tags(s)

TTTTGTAATACGACTCACTATAGGGCGGCCGGGAATTCGTCGACTGGATCCGGTACCGAGGAGATCTGCC
 GCC**CGGATCGCC**

ATGTCGGCCAGCAGCCTCTTGGAGCAGAGACAAAAGGTCAAGGAAACAAAGTACAAAATGGATCTGTAC
 ATCAAAAGGATGGATTAACGATGATGATTTTGAACCTTACTTGAGTCCACAGGCAAGGCCAATATGC
 ATATACTGCCATGTCAGATTCTACTTACCCAGTTACTACAGTCCCTCCATTGGCTTCTCTATTCTTTG
 GGTGAAGCTGCTTGGTCTACGGGGGTGACACAGCCATGCCCTACTTAACTTCTTATGGACAGCTGAGCA
 ACGGAGAGCCCCACTTCTACCAGATGCAATGTTTGGCAACCAGGAGCCCTAGGTAGCACTCCATTTCT
 TGGTCAGCATGGTTTTAATTTCTTCCAGTGGGATTGACTTCTCAGCATGGGAAATAACAGTTCTCAG
 GGACAGTCTACTCAGAGCTCTGGATATAGTAGCAATTATGCTTATGCACCTAGCTCCTTAGTGGAGCCA
 TGATTGATGGACAGTCAGCTTTTCCAATGAGACCCTCAATAAGGCTCCTGGCATGAATACTATAGACCA
 AGGGATGGCAGCACTGAAGTTGGGTAGCACAGAAGTTGCAAGCAATGTTCCAAAAGTTGTAGGTTCTGCT
 GTTGGTAGCGGGTCCATTACTAGTAACATCGTGGCTTCCAATAGTTTGCCTCCAGCCACCATTGCTCCTC
 CAAAACAGCATCTTGGGCTGATATTGCTAGCAAGCCTGCAAAACAGCAACCTAAACTGAAGACCAAGAA
 TGGCATTGCAGGGTCAAGTCTTCCGCCACCCCGATAAAGCATAACATGGATATTGGAACCTGGGATAAC
 AAGGGTCCCGTTGCAAAAGCCCCCTCACAGGCTTTGGTTCAGAATATAGGTCAGCCAACCCAGGGGTCTC
 CTCAGCCTGTAGGTCAGCAGGCTAACAATAGCCACCAGTGGCTCAGGCATCAGTAGGGCAACAGACACA
 GCCATTGCCTCCACCTCCACCACAGCCTGCCAGCTTTCAGTCCAGCAACAGGCAGCTCAGCCAACCCGC
 TGGGTAGCACCTCGGAACCGTGGCAGTGGTTCGGTCATAATGGGGTGGATGGTAATGGAGTAGGACAGT
 CTCAGGCTGGTCTGGATCTACTCTTCCAGAACCCACCAGTGTGGAGAAGCTTCGGTCCATTAATAA
 CTATAACCCCAAAGATTTTGAAGTGAATCTGAAACATGGCCGGGTTTTTCATCATTAAAGAGCTACTCTGAG
 GACGATATTACCGTTCATTAAGTATAATATTTGGTGCAGCACAGAGCATGGTAAACAAGAGACTGGATG
 CTGCTTATCGTTCATGAACGGGAAAGGCCCGTTTACTTACTTTTTCAGTGTCAACGGCAGTGGACACTT
 CTGTGGCGTGGCAGAAATGAAATCTGCTGTGGACTACAACACATGTGCAGGTGTGTGGTCCAGGACAAA
 TGGAAAGGGTCGTTTTGATGTGAGGTGGATTTTGTGAAGGACGTTCCCAATAGCCAACCTGCGACACATTC
 GCCTAGAGAACAACGAGAATAAACCAGTGACCAACTCTAGGGACACTCAGGAAGTGCCTCTGAAAAAGGC
 TAAGCAGGTGTTGAAAATATAGCCAGCTACAAGCACACCACTTCCATTTTTGATGACTTCTCACACTAT
 GAGAAACGCCAAGAGGAAGAAGAAAGTGTAAAAAGGAACGTC AAGGTCGTGGGAAA

ACGCGTACGCGGCCGCTCGAG – GFP Tag – GTTTAA

Protein Sequence:

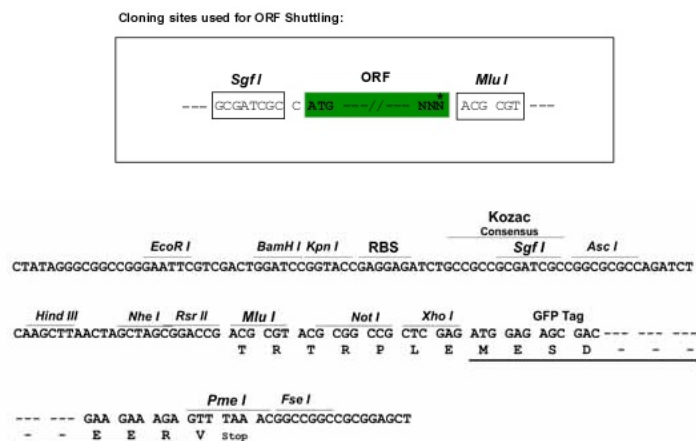
>RG200038 representing NM_016258
 Red=Cloning site Green=Tags(s)

MSASSLLEQRPKGQGNKVNQNSVHQKDGLNDDDFEPYLSQARPNNAYTAMSDSYLPSYYSPIGFSYSL
 GEAAWSTGGDTAMPYLTSYGQLSNGEPHFLPDAMFGQPGALGSTPFLGQHGFNFFPSGIDFSAWGNSSQ
 GQSTQSSGYSSNYAYAPSSLGGAMIDGQSAFANETLNKAPGMNTIDQMAALKLGSTEVASNVPKVVGSA
 VGSITSNIVASNSLPPATIAPPKPAWADIASKPAKQPKLTKNGIAGSSLPPPIKHNMIDIGTWDN
 KGPVAKAPSQALVQNIQPTQGSPPVQVQANNSPPVAQASVQQTQPLPPPPQPAQLSVQQAQAPTR
 WVAPNRGSGFGHNGVDGNGVQSQAGSGSTPSEPHVLEKLRINNYNPKDFDWNLKHGRVFIKSYSE
 DDIHRSIKYNIWCSTEHGNKRLDAAYRSMNGKGPVYLLFSVNGSGHFCGVAEMKSAVDYNTCAGVWSQDK
 WKGRFDVRWIFVKDVPNSQLRHIRLENNENKPVNSRDTQEVPLEKAKQVLKIIASYKHSTIFDDFSHY
 EKRRQEEEEVKKERQGRGK

TRTRPLE – GFP Tag – V

Restriction Sites:

Sgfl-MluI

Cloning Scheme:


ACCN: NM_016258

ORF Size: 1737 bp

OTI Disclaimer: The molecular sequence of this clone aligns with the gene accession number as a point of reference only. However, individual transcript sequences of the same gene can differ through naturally occurring variations (e.g. polymorphisms), each with its own valid existence. This clone is substantially in agreement with the reference, but a complete review of all prevailing variants is recommended prior to use. [More info](#)

OTI Annotation: This clone was engineered to express the complete ORF with an expression tag. Expression varies depending on the nature of the gene.

Components: The ORF clone is ion-exchange column purified and shipped in a 2D barcoded Matrix tube containing 10ug of transfection-ready, dried plasmid DNA (reconstitute with 100 ul of water).

Reconstitution Method:

1. Centrifuge at 5,000xg for 5min.
2. Carefully open the tube and add 100ul of sterile water to dissolve the DNA.
3. Close the tube and incubate for 10 minutes at room temperature.
4. Briefly vortex the tube and then do a quick spin (less than 5000xg) to concentrate the liquid at the bottom.
5. Store the suspended plasmid at -20°C. The DNA is stable for at least one year from date of shipping when stored at -20°C.

RefSeq: [NM_016258.3](#)

RefSeq Size: 3073 bp

RefSeq ORF: 1740 bp

Locus ID: 51441

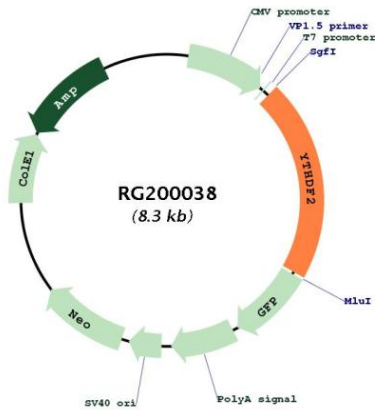
UniProt ID: [Q9Y5A9](#)

Cytogenetics: 1p35.3

Domains: YTH

Gene Summary: This gene encodes a member of the YTH (YT521-B homology) superfamily containing YTH domain. The YTH domain is typical for the eukaryotes and is particularly abundant in plants. The YTH domain is usually located in the middle of the protein sequence and may function in binding to RNA. In addition to a YTH domain, this protein has a proline rich region which may be involved in signal transduction. An Alu-rich domain has been identified in one of the introns of this gene, which is thought to be associated with human longevity. In addition, reciprocal translocations between this gene and the Runx1 (AML1) gene on chromosome 21 has been observed in patients with acute myeloid leukemia. This gene was initially mapped to chromosome 14, which was later turned out to be a pseudogene. Alternatively spliced transcript variants encoding different isoforms have been identified in this gene. [provided by RefSeq, Oct 2012]

Product images:



Circular map for RG200038