

Product datasheet for **RG200006**

LDL Receptor (LDLR) (NM_000527) Human Tagged ORF Clone

Product data:

Product Type:	Expression Plasmids
Product Name:	LDL Receptor (LDLR) (NM_000527) Human Tagged ORF Clone
Tag:	TurboGFP
Symbol:	LDL Receptor
Synonyms:	FH; FHC; FHCL1; LDLCQ2
Mammalian Cell Selection:	Neomycin
Vector:	pCMV6-AC-GFP (PS100010)
E. coli Selection:	Ampicillin (100 ug/mL)



[View online »](#)

ORF Nucleotide Sequence:

>RG200006 representing NM_000527
 Red=Cloning site Blue=ORF Green=Tags(s)

TTTTGTAATACGACTCACTATAGGGCGGCCGGGAATTCGTCGACTGGATCCGGTACCGAGGAGATCTGCC
 GCC**CGGATCGCC**

ATGGGGCCCTGGGGCTGAAATTGCGCTGGACCGTCGCCTTGCTCCTCGCCGCGGGGGACTGCAGTGG
 GCGACAGATGTGAAAGAAACGAGTTCCAGTGCCAAGACGGGAAATGCATCTCCTACAAGTGGGTCTGCGA
 TGGCAGCGCTGAGTGCCAGGATGGCTCTGATGAGTCCCAGGAGACGTGCTTGTCTGTACCTGCAATCC
 GGGGACTTCAGCTGTGGGGCCGTGTAACCGCTGCATTCCTCAGTTCTGGAGGTGCGATGGCCAAGTGG
 ACTGCGACAACGGCTCAGACGAGCAAGGCTGTCCCCCAAGACGTGCTCCAGGACGAGTTTCGCTGCCA
 CGATGGGAAGTGCATCTCTCGGCAGTTCGTCTGTGACTCAGACCGGGACTGCTTGGACGGCTCAGACGAG
 GCCTCTGCCCGGTGCTCACCTGTGGTCCCGCAGCTTCCAGTGAACAGCTCCACCTGCATCCCCCAGC
 TGTGGGCTCGCACAACGCCCGACTGCGAAGATGGCTCGGATGAGTGGCCGACGGCTGTAGGGGTCT
 TTACGTGTTCCAAGGGGACAGTAGCCCCGCTCGGCCTTCGAGTCCACTGCCTAAGTGGCGAGTGCATC
 CACTCCAGCTGGCGCTGTGATGGTGGCCCCGACTGCAAGGACAAATCTGACGAGGAAAATGCGCTGTGG
 CCACCTGTGCGCCGTGACGAATCCAGTGTCTGATGAAAATGCATCCATGGCAGCCGGCAGTGTGACCG
 GGAATATGACTGCAAGGACATGAGCGATGAAGTTGGTGCCTAATGTGACACTCTGCGAGGGACCCAAC
 AAGTTCAGTGTACAGCGGCGAATGCATCACCCTGGACAAAGTCTGCAACATGGCTAGAGACTGCCGGG
 ACTGGTCAGATGAACCCATCAAAGAGTGGCGGACCAACGAATGCTTGGACAACAACGGCGGCTGTCCCA
 CGTCTGCAATGACCTTAAGATCGGCTACGAGTGCCTGTGCCCCGACGGCTTCCAGCTGGTGGCCAGCGA
 AGATCGGAAGATATCGATGAGTGTGAGGATCCCAGACACCTGCAGCCAGCTCTGCGTGAACCTGGAGGTG
 GCTACAAGTGCCAGTGTGAGGAAGGCTTCCAGCTGGACCCACACGAAGGCTGCAAGGCTGTGGGCTC
 CATCGCCTACCTTTCTTACCAACCGGCACGAGGTGAGGAAGATGACGCTGGACCGGAGCGAGTACACC
 AGCCTCATCCCCAACCTGAGGAACGTGGTGCCTCTGGACACGGAGGTGGCCAGCAATAGAATCTACTGGT
 CTGACCTGTCCCAGAGAATGATCTGCAGACCCAGCTTGACAGAGCCACGGCGTCTCTTCTATGACAC
 CGTCATCAGCAGGGACATCCAGGCCCGCAGGGCTGGCTGTGGACTGGATCCACAGCAACATCTACTGG
 ACCGACTCTGTCTGGGCACTGTCTGTGCGGATACCAAGGGCGTGAAGAGGAAAACGTTATTACGGG
 AGAACGGCTCAAAGCCAAGGGCCATCGTGGTGGATCCTGTTTATGGCTTCATGTACTGGACTGACTGGG
 AACTCCCGCCAAGATCAAGAAAGGGGCTGAATGGTGTGGACATCTACTCGCTGGTACTGAAAACATT
 CAGTGGCCCAATGGCATCACCCTAGATCTCCTCAGTGGCCGCTCTACTGGGTTACTCCAACTTCACT
 CCATCTCAAGCATCGATGTCAATGGGGCAACCGGAAGACCATCTTGGAGGATGAAAAGAGGCTGGCCCA
 CCCCTTCTCCTTGGCCGCTTTTGGAGACAAAGTATTTTGGACAGATATCATCAACGAAGCCATTTTCACT
 GCCAACCGCTCACAGGTTCCGATGTCAACTTGTGGTGGTGGAAAACCTACTGTCCCCAGAGGATATGGTCC
 TCTTCCACAACCTCACCCAGCCAAGAGGAGTGAAGTGGTGTGAGAGGACCACCCTGAGCAATGGCGGCTG
 CCAGTATCTGTGCTCCTGCCCCGAGATCAACCCCACTCGCCCAAGTTTACCTGCGCTGCCCGGAC
 GGCATGCTGTGGCCAGGGACATGAGGAGCTGCCTCACAGAGGCTGAGGCTGCAGTGGCCACCCAGGAGA
 CATCCACCGTCAGGCTAAAGTCACTCCACAGCCGTAAGGACACAGCACACAACCACCCGGCTGTTC
 CGACACCTCCCGGCTGCCTGGGGCCACCCTGGGCTCACCACGGTGGAGATAGTGACAATGTCTACCCAA
 GCTCTGGGCGACGTTGCTGGCAGAGGAAATGAGAAGAAGCCAGTAGCGTGAGGGCTCTGTCCATTGTCC
 TCCCCATCGTGTCTCTCTTTGCTGGGGTCTTCTTCTATGGAAGAACTGGCGGCTTAAAGAA
 CATCAACAGCATCAACTTTGACAACCCGCTCTATCAGAAGACCACAGAGGATGAGGTCCACATTTGCCAC
 AACAGGACGGCTACAGTACCCTCGAGACAGATGGTCACTGGAGGATGACGTGGCG

ACGGTACGCGGCCGCTCGAG - GFP Tag - GTTTAA

Protein Sequence: >RG200006 representing NM_000527
 Red=Cloning site Green=Tags(s)

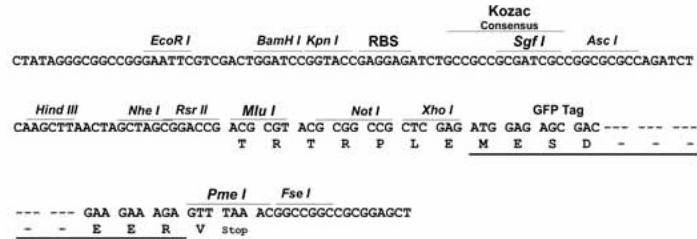
MGPWGWKLRWTVALLLAAAGTAVGDR CERNEFQCQDGK C I S Y K W V C D G S A E C Q D G S D E S Q E T C L S V T C K S
 G D F S C G G R V N R C I P Q F W R C D G Q V D C D N G S D E Q G C P P K T C S Q D E F R C H D G K C I S R Q F V C D S D R D C L D G S D E
 A S C P V L T C G P A S F Q C N S S T C I P Q L W A C D N D P D C E D G S D E W P Q R C R G L Y V F Q G D S S P C S A F E F H C L S G E C I
 H S S W R C D G G P D C K D K S D E E N C A V A T C R P D E F Q C S D G N C I H G S R Q C D R E Y D C K D M S D E V G C V N V T L C E G P N
 K F K C H S G E C I T L D K V C N M A R D C R D W S D E P I K E C G T N E C L D N N G G C S H V C N D L K I G Y E C L C P D G F Q L V A Q R
 R C E D I D E C Q D P D T C S Q L C V N L E G G Y K C Q C E E G F Q L D P H T K A C K A V G S I A Y L F F T N R H E V R K M T L D R S E Y T
 S L I P N L R N V V A L D T E V A S N R I Y W S D L S Q R M I C S T Q L D R A H G V S S Y D T V I S R D I Q A P D G L A V D W I H S N I Y W
 T D S V L G T V S V A D T K G V K R K T L F R E N G S K P R A I V V D P V H G F M Y W T D W G T P A K I K K G L N G V D I Y S L V T E N I
 Q W P N G I T L D L L S G R L Y W V D S K L H S I S S I D V N G G N R K T I L E D E K R L A H P F S L A V F E D K V F W T D I I N E A I F S
 A N R L T G S D V N L L A E N L L S P E D M V L F H N L T Q P R G V N W C E R T T L S N G G C Q Y L C L P A P Q I N P H S P K F T C A C P D
 G M L L A R D M R S C L T E A E A A V A T Q E T S T V R L K V S S T A V R T Q H T T T R P V P D T S R L P G A T P G L T T V E I V T M S H Q
 A L G D V A G R G N E K K P S S V R A L S I V L P I V L L V F L C L G V F L L W K N W R L K N I N S I N F D N P V Y Q K T T E D E V H I C H
 N Q D G Y S Y P S R Q M V S L E D D V A

TRTRPLE - GFP Tag - V

Restriction Sites: Sgfl-MluI

Cloning Scheme:

Cloning sites used for ORF Shutting:


ACCN: NM_000527

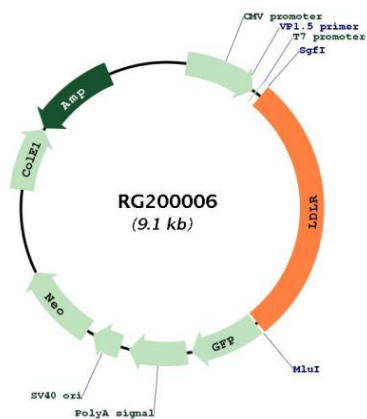
ORF Size: 2580 bp

OTI Disclaimer: Due to the inherent nature of this plasmid, standard methods to replicate additional amounts of DNA in *E. coli* are highly likely to result in mutations and/or rearrangements. Therefore, OriGene does not guarantee the capability to replicate this plasmid DNA. Additional amounts of DNA can be purchased from OriGene with batch-specific, full-sequence verification at a reduced cost. Please contact our customer care team at custsupport@origene.com or by calling 301.340.3188 option 3 for pricing and delivery.

The molecular sequence of this clone aligns with the gene accession number as a point of reference only. However, individual transcript sequences of the same gene can differ through naturally occurring variations (e.g. polymorphisms), each with its own valid existence. This clone is substantially in agreement with the reference, but a complete review of all prevailing variants is recommended prior to use. [More info](#)

OTI Annotation:	This clone was engineered to express the complete ORF with an expression tag. Expression varies depending on the nature of the gene.
Components:	The ORF clone is ion-exchange column purified and shipped in a 2D barcoded Matrix tube containing 10ug of transfection-ready, dried plasmid DNA (reconstitute with 100 ul of water).
Reconstitution Method:	<ol style="list-style-type: none">1. Centrifuge at 5,000xg for 5min.2. Carefully open the tube and add 100ul of sterile water to dissolve the DNA.3. Close the tube and incubate for 10 minutes at room temperature.4. Briefly vortex the tube and then do a quick spin (less than 5000xg) to concentrate the liquid at the bottom.5. Store the suspended plasmid at -20°C. The DNA is stable for at least one year from date of shipping when stored at -20°C.
RefSeq:	NM_000527.2 , NP_000518.1
RefSeq Size:	5175 bp
RefSeq ORF:	2583 bp
Locus ID:	3949
UniProt ID:	P01130
Cytogenetics:	19p13.2
Domains:	ldl_recept_b, EGF_CA, ldl_recept_a, EGF, EGF
Protein Families:	Druggable Genome, ES Cell Differentiation/IPS, Transmembrane
Protein Pathways:	Endocytosis
Gene Summary:	The low density lipoprotein receptor (LDLR) gene family consists of cell surface proteins involved in receptor-mediated endocytosis of specific ligands. Low density lipoprotein (LDL) is normally bound at the cell membrane and taken into the cell ending up in lysosomes where the protein is degraded and the cholesterol is made available for repression of microsomal enzyme 3-hydroxy-3-methylglutaryl coenzyme A (HMG CoA) reductase, the rate-limiting step in cholesterol synthesis. At the same time, a reciprocal stimulation of cholesterol ester synthesis takes place. Mutations in this gene cause the autosomal dominant disorder, familial hypercholesterolemia. Alternate splicing results in multiple transcript variants.[provided by RefSeq, Sep 2010]

Product images:



Circular map for RG200006