

## Product datasheet for **RC600053**

### LTK (NM\_002344) Human Tagged ORF Clone

#### Product data:

Product Type:	Expression Plasmids
Product Name:	LTK (NM_002344) Human Tagged ORF Clone
Tag:	DDK-His
Symbol:	LTK
Synonyms:	TYK1
Mammalian Cell Selection:	None
Vector:	pCMV6-XL5-DDK-His (PS100068)
E. coli Selection:	Ampicillin (100 ug/mL)



[View online »](#)

**ORF Nucleotide Sequence:**

>RC600053 representing leader sequence plus the extracellular domain region of NM\_002344

Red=Cloning site Blue=ORF Green=Tags(s)

GTAATACGACTCACTATAGGGCGGCCGGAATTCGTGACTGGATCTGGTACCGAGGAGATCCGCCGCCG  
CGATCGCC

ATGGGCTGCTGGGACAGCTGCTGGTGTGGTTCGGAGCCGCGGGCGCCATTCTCTGCTCTAGCCCGGGT  
CCCAGGAGACTTTTCTGCGGTCTCGCCCTGCCGCTGGCAAGTCCCAGCCCCGGGACCCGAAAGTCAG  
CGCCCCGCTAGTATCTTGGAGCCAGCCTCCCCGCTGAATTCTCCGGCACCCGAGGGTCTTGGCTGTTT  
TCTACCTCGGGGCCAGCGGCCGATGGGCCACACAGACACAATGTGACGGGGCTACCGGGGACCA  
GCGTGGTGGTACCGTGGGGGCCCGGGCAGCTGAGAGCGTGCAGCTGTGGCGTGCCTGGGGCCCTGG  
CCAGTATCTGATCTCAGCCTACGGAGCCGCGGGCGCAAAGGCGCAAGAACCACCTGTCCGGGCGCAT  
GGCGTCTTGTCTCAGCAATCTTCTCCCTCGGTCTCGGGAGTCGCTGTACATCCTGGTGGGGCAGCAGG  
GAGAGGACGCTGTCCCGAGGTAGCCCGAGAGCCAGCTCGTCTGCCTCGGGGAGTCTCGAGCCGTTGA  
AGAGCACGCGGCATGGATGGGAGCGAAGGGTCCCGGGTCCGCGCGCTGGGCGGGAGGTGGCGGGGT  
GGCGGGGGCGCCACCTACGTTTTCCGGGTGCGCGCTGGCGAGCTGGAACCGTTGCTGGTGGCGGCCGGAG  
GCGGCGGTCCGGCCTACCTGAGGCCGCGGGACCGAGCCGGACTCAGGCCTCCCCGAGAAACTGGAGAA  
CCGCTCGGAGGCGCCCGGGAGCGCGGGAGAGCGGGGCGGCGAGGTGGTGGGGCGGCTGGACGTCGCGG  
GCTCCCTCTCCGAGGCCGCGGCTCACTGCAGGAGGGGGCGGAGGGCGGCCAGGGCTGCTCCGAGGCTT  
GGGCGACCCTTGCTGGCCCGCGCCGGCGGCTTCCGGGGCGGCGGGGCGCTGCACTGCGGGCGGAGG  
CGGCGGGGCTACAGGGGGGCGAGCTTCCAGAGACTGACAACCTCTGGGCTGATGGGGAAGATGGAGTA  
TCCTTCATACACCCAGCAGCGAGCTTCTCCTGCAGCCTCTGGCAGTACCAGAGAACCGAGAGAGCTCCAGT  
AGATCCGAAGGCACCTCAACTGCAGTCACTGCCCTTTGAGAGACTGCCAATGGCAGGACAGCTCCAGT  
GGCTGAATGCCTGTGCCAGAAGCATGGAGCTAGCTGTGGATAACGTCACCTGCATGGACCTGCACAAG  
CCCCAGGCCCT

ACGCGTTCAGGCGACTACAAGGATGACGACGATAAGGGATCTCATCATCACCATCACCATTAATGAGATC  
TGGTACCGATATCAAGCTTGTGACTCTAGA

**Protein Sequence:**

>RC600053 representing signal peptide plus the extracellular domain region of NM\_002344

Red=Cloning sites Green= DDK and 6XHIS Tags

MGCWGQLLVWFGAAGAILCSPSGSQETFLRSSPLPLASPRDPKVSAPPSILEPASPLNSPGTEGSWLF  
STCGASGRHGPTQTQCDGAYAGTSVVVTVGAAGQLRGVQLWRVPGPGQYLISAYGAAGGKAKNHLSTRAH  
GVFVSAIFSLGLESYLILVGQGEDACPGGSPESQLVCLGESRAVEEHAAMDGSEGVPGSRRWAGGGGG  
GGGATYVFRVRAGELEPLLVAAGGGRAYLRPRDRGRTQASPEKLENRSEAPGSGRGGAAAGGGGGWTSR  
APSPQAGRSLQEGAEGGQCSEAWATLWAAAGFGGGGACTAGGGGGYRGGDASETDNLWADGEDGV  
SFIHPSSSELFLQPLAVTENHGEVEIRRHLNCSHCPLRDCQWQAEQLAECLPEGMELAVDNVTCMDLHK  
PPGP

TRSGTRSGDYKDDDDKGSHHHHHH

**Chromatograms:**

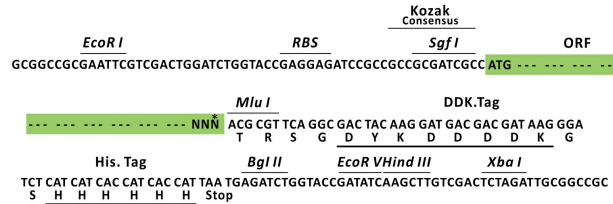
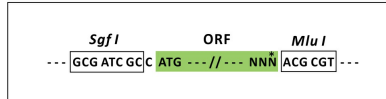
[https://cdn.origene.com/chromatograms/mk8117\\_g06.zip](https://cdn.origene.com/chromatograms/mk8117_g06.zip)

**Restriction Sites:**

Sgfl-MluI

**Cloning Scheme:**

Cloning sites used for ORF Shuttling:



\* The last codon before the Stop codon of the ORF.

<b>ACCN:</b>	NM_002344
<b>ORF Size:</b>	1272 bp
<b>OTI Disclaimer:</b>	The molecular sequence of this clone aligns with the gene accession number as a point of reference only. However, individual transcript sequences of the same gene can differ through naturally occurring variations (e.g. polymorphisms), each with its own valid existence. This clone is substantially in agreement with the reference, but a complete review of all prevailing variants is recommended prior to use. <a href="#">More info</a>
<b>OTI Annotation:</b>	This clone was engineered to express the extra cellular domain of the protein with an expression tag. Expression varies depending on the nature of the gene.
<b>Components:</b>	The ORF clone is ion-exchange column purified and shipped in a 2D barcoded Matrix tube containing 10ug of transfection-ready, dried plasmid DNA (reconstitute with 100 ul of water).
<b>Reconstitution Method:</b>	<ol style="list-style-type: none"> <li>1. Centrifuge at 5,000xg for 5min.</li> <li>2. Carefully open the tube and add 100ul of sterile water to dissolve the DNA.</li> <li>3. Close the tube and incubate for 10 minutes at room temperature.</li> <li>4. Briefly vortex the tube and then do a quick spin (less than 5000xg) to concentrate the liquid at the bottom.</li> <li>5. Store the suspended plasmid at -20°C. The DNA is stable for at least one year from date of shipping when stored at -20°C.</li> </ol>
<b>RefSeq:</b>	<a href="#">NM_002344.5</a> , <a href="#">NP_002335.2</a>
<b>RefSeq Size:</b>	3143 bp
<b>RefSeq ORF:</b>	2595 bp
<b>Locus ID:</b>	4058
<b>UniProt ID:</b>	<a href="#">P29376</a>
<b>Cytogenetics:</b>	15q15.1

**Protein Families:** Druggable Genome, Protein Kinase, Transmembrane

**MW:** 42.9 kDa

**Gene Summary:** The protein encoded by this gene is a member of the *ros*/insulin receptor family of tyrosine kinases. Tyrosine-specific phosphorylation of proteins is a key to the control of diverse pathways leading to cell growth and differentiation. Multiple transcript variants encoding different isoforms have been found for this gene. [provided by RefSeq, Oct 2008]