

## Product datasheet for **RC600047**

### **EPHA10 (NM\_001099439) Human Tagged ORF Clone**

#### **Product data:**

Product Type:	Expression Plasmids
Product Name:	EPHA10 (NM_001099439) Human Tagged ORF Clone
Tag:	DDK-His
Symbol:	EPHA10
Mammalian Cell Selection:	None
Vector:	pCMV6-XL5-DDK-His (PS100068)
E. coli Selection:	Ampicillin (100 ug/mL)



[View online »](#)

**ORF Nucleotide Sequence:**

>RC600047 representing leader sequence plus the extracellular domain region of NM\_001099439

Red=Cloning site Blue=ORF Green=Tags(s)

GTAATACGACTCACTATAGGGCGGCCGGAATTCGTGACTGGATCTGGTACCGAGGAGATCCGCCGCCG  
CGATCGCC

ATGGAGACCTGCGCCGGTCCACACCCGCTGCGCCTCTTCTCTGCGGATGCAGCTCTGTCTCGCGCTGC  
TTTTGGGACCCTGGCGGCTGGGACCGCCGAGGAATTATCCTCTGGATTCCAAAGCCTCCAGGCCGA  
GCTGGGCTGGACTGCACTGCCAAGTAATGGGTGGGAGGAGATCAGCGCGTGGATGAACACGACCGTCCC  
ATCCGCACGTACCAAGTGTGCAATGTGCTGGAGCCCAACCAGGACAACCTGGCTGCAGACTGGCTGGATAA  
GCCGTGGCGCGGGCAGCGCATCTTCGTGGAAGTGCAGTTCACACTCCGTGACTGCAGCAGCATCCCTGG  
CGCCGCGGTACCTGCAAGGAGACCTTCAACGTCTACTACCTGAAACTGAGGCCAGCTGGGCCGTGGG  
CGTCCCCGCTAGGCGGAGCCGCCCCGCAAAATCGACACGATCGCGGGGACGAGAGCTTACGCAGG  
GCGACCTGGGTGAGCGCAAGATGAAGCTGAACACAGAGGTGCGCGAGATCGGACCCTCAGCCGGCGGG  
TTTCCACCTGGCCTTTCAGGACGTGGGCGCATGCGTGGCGCTTGTCTCGGTGCGCGTCTACTACAAGCAG  
TGCCGCGCCACCGTGCAGGGCCTGGCCACGTTCCAGCCACCGCAGCCGAGAGCGCTTCTCCACACTGG  
TGAAGTGGCCGGAACGTGCGTGGCGCACTCGAAGGGGAGCCTGGCAGCCCCACGCATGCACTGCGG  
CGCCGACGGCGAGTGGCTGGTGCCTGTGGGCGCTGCAGTGCAGCGGGGATCCAGGAGCGTGGTGC  
TTCTGCGAAGCCTGTCCCCAGGGTTTTACAAGGTGTCCCGCGGGGCCCTCTGCTCACCGTGGCCAG  
AGCACAGCCGGGCCCTGGAAAACGCTCCACCTTCTGCGTGTGCCAGGACAGCTATGCGCGCTCACCCAC  
CGACCCGCCCTCGGCTTCTGCACCCGGCCGCGTCCGCGCCGCGGGACCTGCAGTACAGCTGAGCCGC  
TCGCCGCTGGTGTGCGACTGCGCTGGCTGCCCGCGCCGACTCGGAGGCCGCTCGGACCTCACCTACT  
CGCTGCTGTGCCTGCGCTGCGGCCGCGAGGGCCCGCGGGCGCCTGCGAGCCGTGCGGGCCGCGCTGGC  
CTTCTACCGCGCCAGGCAGGGCTGCGGGAGCGAGCCGCCACGCTGCTGCACCTGCGGCCGCGCGCGC  
TACACCGTGCAGCTGGCCGCGCTCAACGGCGTCTCGGGCCGCGCGCCGCGGGAACCACTACGCGC  
AGGTCACCGTCTCCACCGGGCCCGGGCGCCCTGGGAGGAGGATGAGATCCGAGGGACCGAGTGAAC  
CCAGAGCGTGTCCCTGCTGCGGGGAGCCATCCCTGCCGAGCCCTGGGGCCAATGACACGGAGTAC  
GAGATCCGATACTACGAGAAGGGTCAGAGTGCAGACTTACTCCATGGTGAAGACAGGGGCGCCACAG  
TCACCGTACCAACCTGAAGCCGGTACCCGCTACGCTTTTTCAGATCCGGGCCGCTTCCCCGGGCCATC  
CTGGGAGGCCAGAGTTTAACCCAGCATTGAAGTACAGACCCTGGGGAGGCTGCCTCAGGTCACAG  
GACCAGAGCCCCGCC

ACGCGTTCAGGGGACTACAAGGATGACGACGATAAGGGATCTCATCATCACCATCACCATTAATGAGATC  
TGGTACCGATATCAAGCTTGTGACTCTAGA

**Protein Sequence:**

>RC600047 representing signal peptide plus the extracellular domain region of NM\_001099439

Red=Cloning sites Green= DDK and 6XHIS Tags

METCAGPHPLRLFLCRMQLCLALLLGPWRPGTAEVILLDSKASQAEWGWTALPSNGWEEISGVDEHDRP  
IRTYQVCNVLEPNQDNWLQGTWISRGRGQRIFVELQFTLRDCSSIPGAAGTCKETFNVYILETEADLGRG  
RPRLGGSRPRIKIDTIAADESFTQGLGERKMKLNTEVREIGPLSRRGFHLAFQDVGACVALVSVRVYKQ  
CRATVRGLATFPATAEAFSTLVEVAGTCVAHSEGEPEGSPRMHCGADGEWLVPVGRSCSAGFQERGD  
FCEACPPGFYKVSRRPLCSPCEHSRALENASTFCVCQDSYARSPTDPPSASCTRPPSAPRDLQYLSR  
SPLVLRRLWLPADSGGRSDVTYSLLCLRCGREGPAGACEPCGPRVAFLPRQAGLRERAATLLHLRPGAR  
YTVRVAALNGVSGPAAAAGTTYAQVTVSTGPGAPWEEDEIRRRDRVEPQSVSLSWREPIGAPGANDTEY  
EIRYIEKQSEQTYSMVKTGAPTIVTNLKPATRYVVFQIRAASPGPSWEAQSFNPSIEVQTLGEAASGSR  
DQSPA

TRSGTRSGDYKDDDDKGSHHHHHH

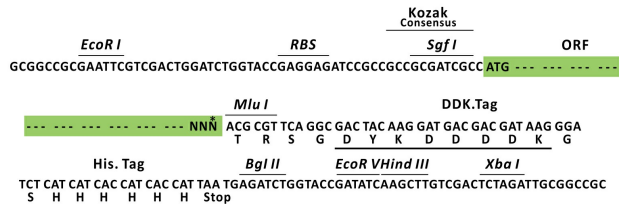
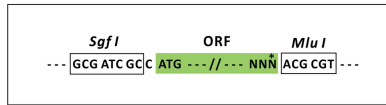
**Chromatograms:**

[https://cdn.origene.com/chromatograms/mk8117\\_f12.zip](https://cdn.origene.com/chromatograms/mk8117_f12.zip)

Restriction Sites: SgfI-MluI

Cloning Scheme:

Cloning sites used for ORF Shuttling:



\* The last codon before the Stop codon of the ORF.

ACCN: NM\_001099439

ORF Size: 1695 bp

OTI Disclaimer: The molecular sequence of this clone aligns with the gene accession number as a point of reference only. However, individual transcript sequences of the same gene can differ through naturally occurring variations (e.g. polymorphisms), each with its own valid existence. This clone is substantially in agreement with the reference, but a complete review of all prevailing variants is recommended prior to use. [More info](#)

OTI Annotation: This clone was engineered to express the extra cellular domain of the protein with an expression tag. Expression varies depending on the nature of the gene.

Components: The ORF clone is ion-exchange column purified and shipped in a 2D barcoded Matrix tube containing 10ug of transfection-ready, dried plasmid DNA (reconstitute with 100 ul of water).

Reconstitution Method:

1. Centrifuge at 5,000xg for 5min.
2. Carefully open the tube and add 100ul of sterile water to dissolve the DNA.
3. Close the tube and incubate for 10 minutes at room temperature.
4. Briefly vortex the tube and then do a quick spin (less than 5000xg) to concentrate the liquid at the bottom.
5. Store the suspended plasmid at -20°C. The DNA is stable for at least one year from date of shipping when stored at -20°C.

RefSeq: [NM\\_001099439.1](#), [NP\\_001092909.1](#)

RefSeq Size: 5526 bp

RefSeq ORF: 3027 bp

Locus ID: 284656

UniProt ID: [Q5IZY3](#)

<b>Cytogenetics:</b>	1p34.3
<b>Protein Families:</b>	Druggable Genome, Protein Kinase
<b>MW:</b>	61.3 kDa
<b>Gene Summary:</b>	Ephrin receptors, the largest subfamily of receptor tyrosine kinases (RTKs), and their ephrin ligands are important mediators of cell-cell communication regulating cell attachment, shape, and mobility in neuronal and epithelial cells (Aasheim et al., 2005 [PubMed 15777695]). See MIM 179610 for additional background on Eph receptors and ephrins.[supplied by OMIM, Mar 2008]