

Product datasheet for **RC600030**

MET (NM_000245) Human Tagged ORF Clone

Product data:

Product Type:	Expression Plasmids
Product Name:	MET (NM_000245) Human Tagged ORF Clone
Tag:	DDK-His
Symbol:	MET
Synonyms:	AUTS9; c-Met; DFNB97; HGFR; RCCP2
Mammalian Cell Selection:	None
Vector:	pCMV6-XL5-DDK-His (PS100068)
E. coli Selection:	Ampicillin (100 ug/mL)



[View online »](#)

ORF Nucleotide Sequence:

>RC600030 representing leader sequence plus the extracellular domain region of NM_000245

Red=Cloning site Blue=ORF Green=Tags(s)

GTAATACGACTCACTATAGGGCGGCCGGAATTCGTGACTGGATCTGGTACCGAGGAGATCCGCCGCCG
CGATCGCC

ATGAAGGCCCGCTGTGCTTGACCTGGCATCCTCGTGCTCCTGTTACCTTGGTGCAGAGGAGCAATG
GGGAGTGTAAAGAGGCACTAGCAAAGTCCGAGATGAATGTGAATATGAAGTATCAGCTTCCCAACTTCAC
CGCGGAAACACCCATCCAGAATGTCATTCTACATGAGCATCACATTTTCCTTGGTGCCACTAACTACATT
TATGTTTTAAATGAGGAAGACCTTCAGAAGTTGCTGAGTACAAGACTGGGCCTGTGCTGGAACACCCAG
ATTGTTTCCCATGTCAGGACTGCAGCAGCAAAGCAATTTATCAGGAGGTGTTTGGAAAGATAACATCAA
CATGGCTCTAGTTGTCGACACCTACTATGATGATCAACTATTAGCTGTGGCAGCGTCAACAGAGGGACC
TGCCAGCGACATGCTTTCCCAACAATCATACTGCTGACATACAGTCGGAGGTTCACTGCATATTCTCCC
CACAGATAGAAGAGCCCAGCCAGTGTCTGACTGTGTGGTGAAGCGCCCTGGGAGCCAAAGTCTTTTCATC
TGTAAAGGACCGTTTCATCAACTCTTTGTAGGCAATACCATAAAATCTTCTTATTTCCAGATCATCCA
TTGCATTCGATATCAGTGAGAAGGCTAAAGGAAACGAAAGATGGTTTTATGTTTTGACGGACAGTCTCT
ACATTGATGTTTTACCTGAGTTCAGAGATTCTTACCCCATTAAGTATGTCCATGCCTTTGAAAGCAACAA
TTTTATTTACTTCTTGACGGTCCAAAGGAAACTCTAGATGCTCAGACTTTTCACACAAGAATAATCAGG
TTCTGTTCATAAACTCTGGATTGCATTCTACATGGAATGCCTCTGGAGTGTATTCTCACAGAAAAGA
GAAAAAGAGATCCACAAAGAAGGAAGTGTAAATATACTTCAGGCTGCGTATGTCAGCAAGCCTGGGGC
CCAGCTTGCTAGACAAATAGGAGCCAGCCTGAATGATGACATTTCTTTTCGGGTGTTTCGCACAAAGCAAG
CCAGATTCTGCCAACCATGGATCGATCTGCCATGTGTGCATTCCCTATCAAATATGTCAACGACTTCT
TCAACAAGATCGTCAACAAAAACAATGTGAGATGTCTCCAGCATTTTACGGACCAATCATGAGCACTG
CTTTAATAGGACACTTCTGAGAAATTCATCAGGCTGTGAAGCGCCCGTATGAATATCGAACAGAGTTT
ACCACAGCTTTGCAGCGGTTGACTTATTCATGGGTCAATTCAGCGAAGTCTCTAACATCTATATCCA
CCTTCATTAAGGAGACCTCACCATAGCTAATCTTGGGACATCAGAGGTCGCTTCATGCAGGTTGTGGT
TTCTCGATCAGGACCATCAACCCCTCATGTGAATTTCTCTGGACTCCCATCCAGTGTCTCCAGAAGTG
ATTGTGGAGCATACATTAACCAAAATGGCTACACACTGGTTATCACTGGGAAGAAGATCACGAAGATCC
CATTGAATGGCTTGGGCTGCAGACATTTCCAGTCTGCAGTCAATGCCTCTCTGCCCCACCTTTGTTC
GTGTGGCTGGTGCACGACAAATGTGTGCGATCGGAGGAATGCCTGAGCGGGACATGGACTCAACAGATC
TGCTCTGCCTGCAATCTACAAGTTTTCCCAATAGTGCACCCCTTGAAGGAGGACAAAGGCTGACCATAT
GTGGCTGGGACTTTGGATTTTCGGAGGAATAATAAATTTGATTTAAGAAAAGTAGAGTTCTCCTTGAAA
TGAGAGCTGCACCTTGAAGTGAAGGACAGATGAATACATTGAAATGCACAGTTGGTCTGCCATG
AATAAGCATTTCATATGTCCATAATTTCAAATGGCCACGGGACAACACAATACAGTACATTCTCT
ATGTGGATCCTGTAATAACAAGTATTTCCGCCAAATACGGTCTATGGCTGGTGGCACTTTACTTACTTT
AACTGGAAATTACCTAACAGTGGGAATTTAGACACATTTCAATGGTGGAAAAACATGTACTTTAAAA
AGTGTGCAAAACAGTATTTCTGAATGTTATACCCAGCCCAACCATTTCACTGAGTTTGTCTGTTAAAT
TGAAAATTGACTTAGCCAACCGAGAGACAAGCATCTTCAGTTACCGTGAAGATCCCATTTGCTATGAAAT
TCATCCAACCAAACTTTTATTAGTGGTGGGAGCACAATAACAGGTGTTGGGAAAAACCTGAATTCAGTT
AGTGTCCCGAGAATGGTCATAAATGTGCATGAAGCAGGAAGGAATTTACAGTGGCATGTCAACATCGCT
CTAATTCAGAGATAATCTGTTGTACCACTCCTTCCCTGCAACAGCTGAATCTGCAACTCCCCCTGAAAA
CAAAGCCTTTTTCATGTTAGATGGGATCCTTTCCAAATACTTTGATCTCATTTATGTACATAATCTGTG
TTTAAGCCTTTTGAAGCCAGTGTGATCTCAATGGGCAATGAAATGTACTGGAAATTAAGGGAAATG
ATATTGACCTGAAGCAGTTAAGGTGAAGTGTAAAAGTTGAAATAAGAGCTGTGAGAATATACACTT
ACATTCTGAAGCCGTTTTATGCACGGTCCCAATGACCTGCTGAAATTGAACAGCGAGCTAAATATAGAG
TGAAGCAAGCAATTTCTCAACCGTCTTGAAAAGTAATAGTTCAACCAGATCAGAATTCACA

ACGCGTTCAGGCGACTACAAGGATGACGACGATAAGGGATCTCATCATCACCATCACCATTAATGAGATC
TGGTACCGATATCAAGCTTGTGACTCTAGA

Protein Sequence: >RC600030 representing signal peptide plus the extracellular domain region of NM_000245
 Red=Cloning sites Green= DDK and 6XHIS Tags

MKAPAVLAPGILVLLFTLVQRSNGECKEALAKSEMNVNMKYQLPNFTAETPIQNVILHEHHIFLGATNYI
 YVLNEEDLQKVAEYKTPVLEHPDCFCQDCSSKANLGGVWVDNINMALVVDYDDQLISCGSVNRGT
 CQRHVFPNHNTADIQSEVHCIFSPQIEEPSQPCDCVVSALGAKVLSVVKDRFINFFVGTINSSYFPDHP
 LHSISVRRLLKETKDGFMFLTDQSYIDVLPFRDSYPIKYVHAFESNNFIYFLTVQRETLDAQTFHTRIIR
 FCSINSLHSYMEMPLECILTEKRKRSTKKEVFNIIQAAYVSKPGAQLARQIGASLNDDILFGVFAQSK
 PDSAEPMDRSAMCAFPKIYVNDFFNKIVNKNVNRCLQHFYGNHEHCNRTLLRNSSGCEARRDEYRTEF
 TTALQRVDLFGQFSEVLLTSISTFIKGLDTIANLGTSEGRFMQVVVSRSGPSTPHVNFLLDSDHPVSPEV
 IVEHTLNQNGYTLVITGKKITKIPLNGLGCRHFQSCSQCLSAPPFVQCGWCHDKCVRSEECLSGTWTQOI
 CLPAIYKVPNSAPLEGGTRLICGWDFGFRNNKFDLKKTRVLLGNESCTLTLSESTMNTLKCTVGPAM
 NKHFNMSIIISNGHGTQYSTFSYVDPVITSISPKYGPAGGTLTLTGNYLNSGNSRHISIGGKCTLK
 SVSNSILECYTPAQTIISTEFAVKLKIDLANRETSIFSYPREDPIVYEIHPKTSFISGGSTITGVGNLNSV
 SVPRMIVNVHEAGRNFVACQHRNSSEIICCTTPSLQQLNLQLPLKTKAFFMLDGLISKYFDLIYVHNVPV
 FKPFKPMVIMSGNENVLEIKGNDIDPEAVKGEVLKVGKNSCENIHLHSEAVLCTVPNDLKLNSLNLNIE
 WKQAISSTVLGKIVIQPDQNF

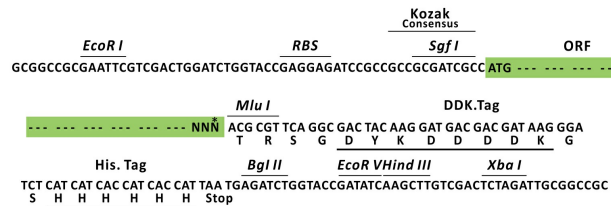
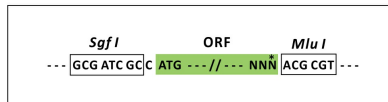
TRSGTRSGDYKDDDDKGSHHHHHH

Chromatograms: https://cdn.origene.com/chromatograms/mk8118_a03.zip

Restriction Sites: SgfI-MluI

Cloning Scheme:

Cloning sites used for ORF Shuttling:



* The last codon before the Stop codon of the ORF.

ACCN: NM_000245

ORF Size: 2796 bp

OTI Disclaimer:	The molecular sequence of this clone aligns with the gene accession number as a point of reference only. However, individual transcript sequences of the same gene can differ through naturally occurring variations (e.g. polymorphisms), each with its own valid existence. This clone is substantially in agreement with the reference, but a complete review of all prevailing variants is recommended prior to use. More info
OTI Annotation:	This clone was engineered to express the extra cellular domain of the protein with an expression tag. Expression varies depending on the nature of the gene.
Components:	The ORF clone is ion-exchange column purified and shipped in a 2D barcoded Matrix tube containing 10ug of transfection-ready, dried plasmid DNA (reconstitute with 100 ul of water).
Reconstitution Method:	<ol style="list-style-type: none">1. Centrifuge at 5,000xg for 5min.2. Carefully open the tube and add 100ul of sterile water to dissolve the DNA.3. Close the tube and incubate for 10 minutes at room temperature.4. Briefly vortex the tube and then do a quick spin (less than 5000xg) to concentrate the liquid at the bottom.5. Store the suspended plasmid at -20°C. The DNA is stable for at least one year from date of shipping when stored at -20°C.
Note:	Plasmids are not sterile. For experiments where strict sterility is required, filtration with 0.22um filter is required.
RefSeq:	NM_000245.2 , NP_000236.2
RefSeq Size:	6641 bp
RefSeq ORF:	4173 bp
Locus ID:	4233
UniProt ID:	P08581
Cytogenetics:	7q31.2
Protein Families:	Druggable Genome, Protein Kinase, Transmembrane
Protein Pathways:	Adherens junction, Axon guidance, Colorectal cancer, Cytokine-cytokine receptor interaction, Endocytosis, Epithelial cell signaling in Helicobacter pylori infection, Focal adhesion, Melanoma, Pathways in cancer, Renal cell carcinoma
MW:	104.1 kDa

Gene Summary:

This gene encodes a member of the receptor tyrosine kinase family of proteins and the product of the proto-oncogene MET. The encoded preproprotein is proteolytically processed to generate alpha and beta subunits that are linked via disulfide bonds to form the mature receptor. Further processing of the beta subunit results in the formation of the M10 peptide, which has been shown to reduce lung fibrosis. Binding of its ligand, hepatocyte growth factor, induces dimerization and activation of the receptor, which plays a role in cellular survival, embryogenesis, and cellular migration and invasion. Mutations in this gene are associated with papillary renal cell carcinoma, hepatocellular carcinoma, and various head and neck cancers. Amplification and overexpression of this gene are also associated with multiple human cancers. [provided by RefSeq, May 2016]