

## Product datasheet for RC403772

### Telomerase reverse transcriptase (TERT) (NM\_198253) Human Mutant ORF Clone

#### Product data:

Product Type:	Mutant ORF Clones
Product Name:	Telomerase reverse transcriptase (TERT) (NM_198253) Human Mutant ORF Clone
Mutation Description:	Y846C
Affected Codon#:	846
Affected NT#:	2537
Nucleotide Mutation:	TERT Mutant (Y846C), Myc-DDK-tagged ORF clone of Homo sapiens telomerase reverse transcriptase (TERT), transcript variant 1 as transfection-ready DNA
Effect:	Dyskeratosis congenita
Symbol:	Telomerase reverse transcriptase
Synonyms:	CMM9; DKCA2; DKCB4; EST2; hEST2; hTRT; PFBMFT1; TCS1; TP2; TRT
E. coli Selection:	Kanamycin (25 ug/mL)
Mammalian Cell Selection:	Neomycin
Vector:	pCMV6-Entry (PS100001)
Tag:	Myc-DDK
ACCN:	NM_198253
ORF Size:	3396 bp
Restriction Sites:	SgfI-RsrII
ORF Nucleotide Sequence:	>RC403772 representing NM_198253 Red=Cloning site Blue=ORF Green=Tags(s)

TTTTGTAATACGACTCACTATAGGGCGCCGGGAATTCGTCGACTGGATCCGGTACCGAGGAGATCTGCC  
GCC**CGATCGCC**

ATGCCGCGCTCCCCGCTGCCGAGCCGTGCGCTCCCTGCTGCGCAGCCACTACCGGAGGTGCTGCCGC  
TGGCCACGTTCGTGCGGCGCCTGGGGCCCCAGGGCTGGCGGCTGGTGCAGCGCGGGGACCGGGCGCTTT  
CCGCGCGCTGGTGGCCAGTGCCTGGTGTGCGTGCCCTGGGACGCACGGCCGCCCGCCCGCCCTCC  
TTCCGCCAGGTGTCCTGCCTGAAGGAGCTGGTGGCCCGAGTGTGCAGAGGCTGTGCGAGCGGGCGCA  
AGAACGTGCTGGCCTTCGGCTTCGCGCTGCTGGACGGGGCCCGGGGGCCCCCGAGGCTTCACCAC  
CAGCGTGCAGCTACCTGCCAACACGGTGACCGACGCACTGCGGGGAGCGGGGCGTGGGGCTGCTG  
CTGCGCCGCTGGGCGACGACGTGCTGGTTCACCTGCTGGCACGCTGCGCGCTTTGTGCTGGTGGCTC



[View online »](#)

CCAGTGCGCCTACCAGGTGTGCGGGCCGCGCTGTACCAGCTCGGCGCTGCCACTCAGGCCCGGCCCC  
GCCACACGCTAGTGGACCCCAAGGCGTCTGGGATGCGAACGGGCCTGGAACCATAGCGTCAGGGAGGCC  
GGGGTCCCCCTGGGCCTGCCAGCCCCGGGTGCGAGGAGGCGGGGGCAGTGCCAGCCGAAGTCTGCCGT  
TGCCAAAGAGGCCAGGCGTGGCGCTGCCCTGAGCCGGAGCGGACGCCCGTTGGGCAGGGGTCTGGGC  
CCACCCGGGACAGGACGCGTGGACCGAGTGACCGTGGTTTCTGTGTGGTGTACCTGCCAGACCCGGAA  
GAAGCCACCTCTTTGGAGGGTGCCTCTCTGGCACGCGCCACTCCCACCATCCGTGGGCCCGCAGCACC  
ACGCGGGCCCCCATCCACATCGCGGCCACCACTCCCTGGGACACGCCTTGCCCCCGGTGACCGCGA  
GACCAAGCACTTCTCTACTCCTCAGGGGACAAGGAGCAGCTGCGGCCCTCCTTCTACTCAGCTCTCTG  
AGGCCAGCCTGACTGCGCTCGGAGGCTCGTGGAGACCATCTTCTGGGTTCCAGGCCCTGGATGCCAG  
GGACTCCCCGAGGTTGCCCGCCTGCCACAGCCTACTGGCAAATGCGGCCCTGTTTCTGGAGCTGCT  
TGGGAACCACGCGCAGTGCCCTACGGGTGCTCCTCAAGACGCACTGCCGCTGCGAGCTGCGGTACCC  
CCAGCAGCCGGTGTCTGTGCCGGGAGAAGCCCCAGGGCTCTGTGGCGGCCCGAGGAGGAGACACAG  
ACCCCGTGCCTGGTGCAGTGTCTCCGCCAGCACAGCAGCCCTGGCAGGTGTACGGCTTCGTGCGGGC  
CTGCTGCGCCGGTGGTCCCCAGGCTCTGGGGCTCCAGGCACAACGAACGCCGCTTCTCAGGAAC  
ACCAAGAAGTTTCTCCTGGGAAGCATGCCAAGCTCTCGTGCAGGAGCTGACGTGGAAGATGAGCG  
TGCGGGACTGCGCTTGGCTGCGCAGGAGCCAGGGTTGGCTGTGTTCCGGCCGAGAGCACCGTCTGCG  
TGAGGAGATCCTGGCCAAGTTCCTGCACTGGCTGATGAGTGTGTACGTCTGAGCTGCTCAGGTCTTTC  
TTTTATGTACGGAGACCACGTTTCAAAGAACAGGCTCTTTTCTACCGGAAGAGTGTCTGGAGCAAGT  
TGCAAAGCATTGGAATCAGACAGCACTTGAAGAGGGTGCAGCTGCGGGAGCTGTCCGAAGCAGAGGTCAG  
GCAGCATCGGGAAGCCAGGCCCGCCCTGCTGACGTCCAGACTCCGCTTCACTCCCAAGCCTGACGGGCTG  
CGGCCGATTGTGAACATGGACTACGTGCGTGGGAGCCAGAACGTTCCGAGAGAAAAGAGGGCCGAGCGTC  
TCACCTCGAGGGTGAAGGCACTGTTACGCTGCTCAACTACGAGCGGGCGCGGCCCGCCCGCTCCTGGG  
CGCCTCTGTGCTGGGCTGGAGATATCCACAGGGCCTGGCGCACCTTCTGCTGCGTGTGGGGCCGAG  
GACCCGCGCCTGAGCTGTACTTTGTCAAGGTGGATGTGACGGGCGCTACGACACCATCCCCAGGACA  
GGCTCACGGAGGTCATCGCCAGCATCATCAAACCCAGAACACGTAAGTGTGCTGCGTATGCCGTGGT  
CCAGAAGGCCGCCATGGGCACGTCCGCAAGGCCTTCAAGAGCCACGCTCTACCTTGACAGACCTCCAG  
CCGTACATGCGACAGTTCGTGGCTCACCTGCAGGAGACCAGCCCGCTGAGGGATGCCGTGCTATCGAGC  
AGAGCTCCTCCCTGAATGAGGCCAGCAGTGGCCTTTCGACGCTTCTCCTACGCTTCTATGTCCACCACGC  
CGTGCGCATCAGGGGCAAGTCTACGTCCAGTCCAGGGGATCCCGCAGGGCTCCATCCTCTCCACGCTG  
CTCTGCAGCCTGTGCTGCGGCGACATGGAGAACAAGCTGTTTGGGGGATTCGGCGGACGGGCTGCTCC  
TGGGTTTGGTGGATGATTTCTTGTGGTGGTACACCTCACCTCACCCACGCGAAAACCTTCTCAGGACCT  
GGTCCGAGGTGTCCCTGAGTATGGCTGCGTGGTGAACCTGCGGAAGACAGTGGTGAACCTCCCTGTAGAA  
GACGAGGCCCTGGGTGGCACGGCTTTTGTTCAGATGCCGGCCACGGCCTATTCCCTGGTGGCGCTGC  
TGCTGGATACCCGGACCTGGAGGTGCAGAGCGACTACTCCAGCTATGCCCGGACCTCCATCAGAGCCAG  
TCTCACCTTCAACCGCGCTTCAAGGCTGGGAGGAACATGCGTCGCAAACCTTTGGGGTCTTGGCGCTG  
AAGTGTACAGCCTGTTTCTGGATTTGCAGGTGAACAGCCTCCAGACGGTGTGCACCAACATCTACAAGA  
TCCTCTGCTGCAGGCGTACAGGTTTACGCAATGTGTGCTGCAGCTCCCATTTCTCAGCAAGTTTGGAA  
GAACCCACATTTTTCTGCGCGTATCTCTGACACGGCCTCCCTCTGCTACTCCATCTGAAAGCCAAG  
AACGCAGGGATGTGCTGGGGGCAAGGGCGCCCGCCCTCTGCCCTCCGAGGCCCTGCAGTGGCTGT  
GCCACCAAGCATTCTGCTCAAGCTGACTCGACACCGTGTACCTACGTGCCACTCCTGGGGTCACTCAG  
GACAGCCAGACGCACTGAGTCGGAAGCTCCCGGGGACGACGCTGACTGCCCTGGAGGCCGAGCCAAC  
CCGGCACTGCCCTCAGACTTCAAGACCATCCTGGAC

AGCGGACCGACGCTACGCGGCCGCTCGAGCAGAACTCATCTCAGAAGAGGATCTGGCAGCAAATGATATCC  
TGGATTACAAGGATGACGACGA TAAGGTTTAA

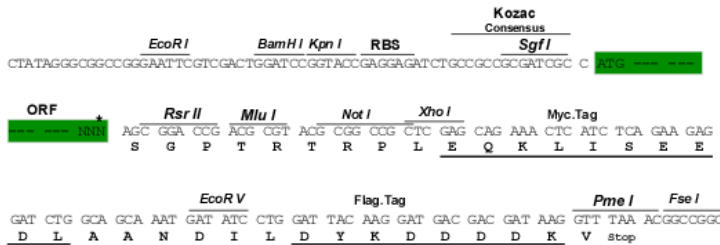
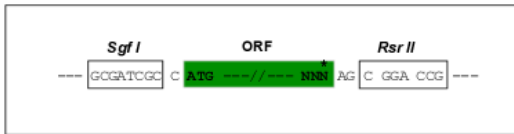
Protein Sequence: >RC403772 representing NM\_198253  
 Red=Cloning site Green=Tags(s)

MPRAPRCRAVRSLLRSHYREVLPLATFVRRLLGPQGWRLVQRGDPAAFRALVAQCLVCPWDARPPPAAPS  
 FRQVSKLKVVARVLRQLCERGAKNLAFGFAALLDGARGPPEAF TTSVRSYLPNTVTDALRSGAWGLL  
 LRRVGGDVLVHLLARCALFVLVAPSCAYQVCGPPLYQLGAATQARPPPHASGPRRRLGCERAWNHSVREA  
 GVPLGLPAPGARRRRGGASRSRLPLPKRPRRGAAPERP T PVGQGSWAHPGRTRGPSDRGFCVVSARP AE  
 EATSLEGALSGTRHSHPSVGRQHHAGPPSTRP RPWDTPCPPVYAETKHFLYSSGDKEQLRPSFLLSSL  
 RPSLTGARRLVETIFLGRPWMPGTPRRLPRLPQRYWQMRPLFLELLGNHAQCPYGVLLKTHCPLRAAVT  
 PAAGVCAREKPGQSVAAP EEDTDPRLVQLLRQHSSPWQVYGFVRACLRRLVPPGLWGSRHNNRRFLRN  
 TKKFISLKGAKLSLQELTWKMSVRDCAWLRSPGVGCVPA AEHRLREEILAKFLHWLMSVYVVELLRSF  
 FYVTETTFQKNRLFYRKS VWSKLQSIGIRQHLKRVQLRELSEAEVRQHREARPALLTSRLRFIPKPDGL  
 RPIVNDYVVGARTFRREKRAERLTSRVKALFVLNYERARRPGLLGASVLGLDDIHRARWTFVLRVRAQ  
 DPPPELVFVKVDVTGAYDTIPQDRLTEVIASIIKPQNTYCVRRYAVVQKAAHGHVRKAFKSHVSTLTDLQ  
 PYMRQFVAHLQETSPLRDAVVIEQSSSLNEASSGLFDVFLRFMCHHAVRIRGKSYVQCQGIPQGSILSTL  
 LCSLCCGDMENKLFAGIRRDGLLLRLVDDFLLVTPHLTHAKTFLRTLVRGVPEYGCVVNLRKTVVNFVPE  
 DEALGGTAVFVQMPAHGLFPWCGLLLDTRTLEVQSDYSSYARTSIRASLTFNRGFKAGRNMRRKLFVLRRL  
 KCHSLFDLQVNSLQTVCTNIYKILLQAYRFHACVQLLPHFQQVWKNPTFFLRVSDTASLCYSILKAK  
 NAGMSLGAKGAAGPLPSEAVQWLCHQAFLLKLTRHRVTYVPLLGSLRTAQTQLSRKLPGTTLTALEAAAN  
 PALPSDFKTILD

SGPTRRRL**EQKLISEEDLAANDILDYKDDDDK**V

Restriction Sites: SgfI-RsrII  
 Cloning Scheme:

Cloning sites used for ORF Shuttling:



\* The last codon before the Stop codon of the ORF

<b>OTI Disclaimer:</b>	<p>Due to the inherent nature of this plasmid, standard methods to replicate additional amounts of DNA in E. coli are highly likely to result in mutations and/or rearrangements. Therefore, OriGene does not guarantee the capability to replicate this plasmid DNA. Additional amounts of DNA can be purchased from OriGene with batch-specific, full-sequence verification at a reduced cost. Please contact our customer care team at <a href="mailto:custsupport@origene.com">custsupport@origene.com</a> or by calling 301.340.3188 option 3 for pricing and delivery.</p> <p>The molecular sequence of this clone aligns with the gene accession number as a point of reference only. However, individual transcript sequences of the same gene can differ through naturally occurring variations (e.g. polymorphisms), each with its own valid existence. This clone is substantially in agreement with the reference, but a complete review of all prevailing variants is recommended prior to use. <a href="#">More info</a></p>
<b>OTI Annotation:</b>	<p>This clone was engineered to express the complete ORF with an expression tag. Expression varies depending on the nature of the gene.</p>
<b>Components:</b>	<p>The ORF clone is ion-exchange column purified and shipped in a 2D barcoded Matrix tube containing 10ug of transfection-ready, dried plasmid DNA (reconstitute with 100 ul of water).</p>
<b>Note:</b>	<p>Plasmids are not sterile. For experiments where strict sterility is required, filtration with 0.22um filter is required.</p>
<b>RefSeq:</b>	<p><a href="#">NP_937983</a></p>
<b>RefSeq Size:</b>	<p>3396 bp</p>
<b>RefSeq ORF:</b>	<p>3399 bp</p>
<b>Locus ID:</b>	<p>7015</p>
<b>Cytogenetics:</b>	<p>5p15.33</p>
<b>Protein Families:</b>	<p>Druggable Genome</p>
<b>MW:</b>	<p>124.5 kDa</p>
<b>Gene Summary:</b>	<p>Telomerase is a ribonucleoprotein polymerase that maintains telomere ends by addition of the telomere repeat TTAGGG. The enzyme consists of a protein component with reverse transcriptase activity, encoded by this gene, and an RNA component which serves as a template for the telomere repeat. Telomerase expression plays a role in cellular senescence, as it is normally repressed in postnatal somatic cells resulting in progressive shortening of telomeres. Deregulation of telomerase expression in somatic cells may be involved in oncogenesis. Studies in mouse suggest that telomerase also participates in chromosomal repair, since de novo synthesis of telomere repeats may occur at double-stranded breaks. Alternatively spliced variants encoding different isoforms of telomerase reverse transcriptase have been identified; the full-length sequence of some variants has not been determined. Alternative splicing at this locus is thought to be one mechanism of regulation of telomerase activity. [provided by RefSeq, Jul 2008]</p>