

## Product datasheet for **RC403534**

### Menin (MEN1) (NM\_130799) Human Mutant ORF Clone

#### Product data:

Product Type:	Mutant ORF Clones
Product Name:	Menin (MEN1) (NM_130799) Human Mutant ORF Clone
Mutation Description:	E116X
Affected Codon#:	116
Affected NT#:	346
Nucleotide Mutation:	MEN1 Mutant (E116X), Myc-DDK-tagged ORF clone of Homo sapiens multiple endocrine neoplasia I (MEN1), transcript variant 2 as transfection-ready DNA
Effect:	Multiple endocrine neoplasia 1
Symbol:	MEN1
Synonyms:	MEAI; SCG2
E. coli Selection:	Kanamycin (25 ug/mL)
Mammalian Cell Selection:	Neomycin
Vector:	pCMV6-Entry (PS100001)
Tag:	Myc-DDK
ACCN:	NM_130799
ORF Size:	345 bp
Restriction Sites:	Sgfl-Mlul



[View online »](#)

**ORF Nucleotide Sequence:**

>RC403534 representing NM\_130799  
 Red=Cloning site Blue=ORF Green=Tags(s)

TTTTGTAATACGACTCACTATAGGGCGGCCGGGAATTCGTCGACTGGATCCGGTACCGAGGAGATCTGCC  
 GCCCGCATCGCC

ATGGGGCTGAAGGCCGCCAGAAGACGCTGTTCCCGCTGCGCTCCATCGACGACGTGGTGCGCCTGTTTG  
 CTGCCGAGCTGGGCCGAGAGGAGCCGGACCTGGTCTCCTTTCCCTGGTCTGGCTTCGTGGAGCATTT  
 TCTGGCTGTCAACCGCGTCATCCCTACCAACGTTCCCGAGCTCACCTTCCAGCCAGCCCCGCCCGAC  
 CCGCTGGCGGCCTCACCTACTTTCCCGTGGCCGACCTGTCTATCATCGCCGCCCTCTATGCCCGCTTCA  
 CCGCCAGATCCGAGGCCCGCTCGACCTGTCCCTCTATCTCGAGAAGGGGGTGTCTCCAGCCGT

AGCGGACCGACGCGTACGCGGCCGCTCGAGCAGAACTCATCTCAGAAGAGGATCTGGCAGCAAATGATATCC  
 TGGATTACAAGGATGACGACGA TAAGGTTTAA

**Protein Sequence:**

>RC403534 representing NM\_130799  
 Red=Cloning site Green=Tags(s)

MGLKAAQKTLFPLRSIDDVVRLFAAELGREEDLVLLSLVLFVVEHFLAVNRVIPTNPPELTFQPSAPD  
 PPGGLTYFPVADLSIIAALYARFTAQIRGAVDLSLYPREGGVSSR

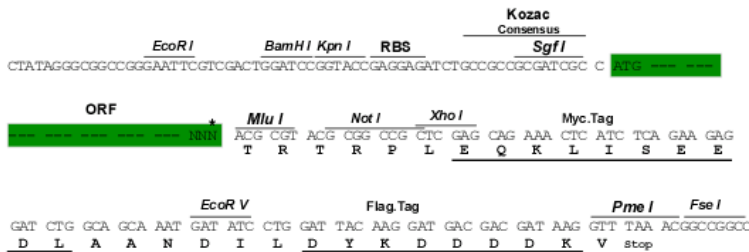
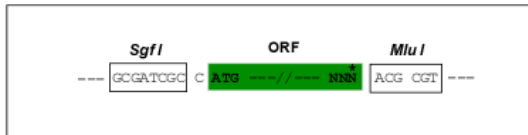
SGPTRRRRLEQKLISEEDLAANDILDYKDDDDKV

**Restriction Sites:**

SgfI-MluI

**Cloning Scheme:**

Cloning sites used for ORF Shutting:



\* The last codon before the Stop codon of the ORF

**OTI Disclaimer:**

The molecular sequence of this clone aligns with the gene accession number as a point of reference only. However, individual transcript sequences of the same gene can differ through naturally occurring variations (e.g. polymorphisms), each with its own valid existence. This clone is substantially in agreement with the reference, but a complete review of all prevailing variants is recommended prior to use. [More info](#)

**OTI Annotation:**

This clone was engineered to express the complete ORF with an expression tag. Expression varies depending on the nature of the gene.

<b>Components:</b>	The ORF clone is ion-exchange column purified and shipped in a 2D barcoded Matrix tube containing 10ug of transfection-ready, dried plasmid DNA (reconstitute with 100 ul of water).
<b>RefSeq:</b>	<a href="#">NP_570711</a>
<b>RefSeq Size:</b>	345 bp
<b>RefSeq ORF:</b>	1833 bp
<b>Locus ID:</b>	4221
<b>Cytogenetics:</b>	11q13.1
<b>Domains:</b>	Menin
<b>Protein Families:</b>	Druggable Genome, Transcription Factors
<b>MW:</b>	12.7 kDa
<b>Gene Summary:</b>	This gene encodes menin, a tumor suppressor associated with a syndrome known as multiple endocrine neoplasia type 1. Menin is a scaffold protein that functions in histone modification and epigenetic gene regulation. It is thought to regulate several pathways and processes by altering chromatin structure through the modification of histones. [provided by RefSeq, May 2019]