

Product datasheet for **RC403528**

Menin (MEN1) (NM_130799) Human Mutant ORF Clone

Product data:

Product Type:	Mutant ORF Clones
Product Name:	Menin (MEN1) (NM_130799) Human Mutant ORF Clone
Mutation Description:	Q96X
Affected Codon#:	96
Affected NT#:	286
Nucleotide Mutation:	MEN1 Mutant (Q96X), Myc-DDK-tagged ORF clone of Homo sapiens multiple endocrine neoplasia I (MEN1), transcript variant 2 as transfection-ready DNA
Effect:	Multiple endocrine neoplasia 1
Symbol:	MEN1
Synonyms:	MEAI; SCG2
E. coli Selection:	Kanamycin (25 ug/mL)
Mammalian Cell Selection:	Neomycin
Vector:	pCMV6-Entry (PS100001)
Tag:	Myc-DDK
ACCN:	NM_130799
ORF Size:	285 bp
Restriction Sites:	Sgfl-Mlul



[View online »](#)

ORF Nucleotide Sequence:

>RC403528 representing NM_130799
 Red=Cloning site Blue=ORF Green=Tags(s)

TTTTGTAATACGACTCACTATAGGGCGGCCGGAATTCGTCGACTGGATCCGGTACCGAGGAGATCTGCC
 GCCCGCATCGCC

ATGGGGCTGAAGGCCGCCAGAAGACGCTGTTCCCGCTGCGCTCCATCGACGACGTGGTGCCTGTTTG
 CTGCCGAGCTGGGCCGAGAGGAGCCGGACCTGGTCTCCTTTCCCTGGTCTGGCTTCGTGGAGCATTT
 TCTGGCTGTCAACCGCTCATCCCTACCAACGTTCCCGAGCTCACCTTCCAGCCAGCCCCGCCCGAC
 CCGCTGGCGCCTCACCTACTTCCCGTGCCGACCTGTCTATCATCGCCCTCTATGCCCGCTTCA
 CCGCC

AGCGGACCGACGCGTACGCGGCCGCTCGAGCAGAACTCATCTCAGAAGAGGATCTGGCAGCAAATGATATCC
 TGGATTACAAGGATGACGACGA TAAGGTTTAA

Protein Sequence:

>RC403528 representing NM_130799
 Red=Cloning site Green=Tags(s)

MGLKAAQKTLFPLRSIDDVVRLFAAELGREPDLVLLSLVLGFVEHFLAVNRVIPTNPELTFQSPAPD
 PPGGLTYFPVADLSIIAALYARFTA

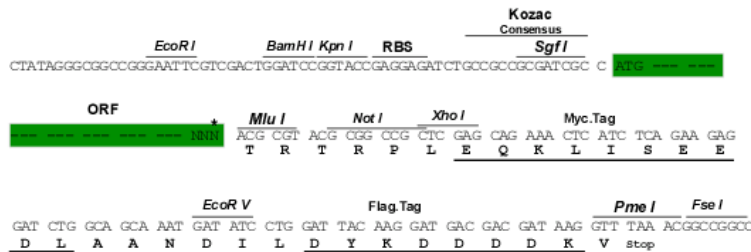
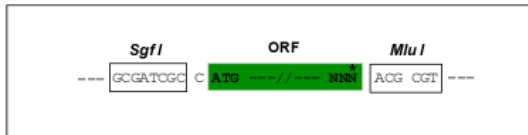
SGPTRRRRLEQKLISEEDLAANDILDYKDDDDKV

Restriction Sites:

SgfI-MluI

Cloning Scheme:

Cloning sites used for ORF Shutting:



* The last codon before the Stop codon of the ORF

OTI Disclaimer:

The molecular sequence of this clone aligns with the gene accession number as a point of reference only. However, individual transcript sequences of the same gene can differ through naturally occurring variations (e.g. polymorphisms), each with its own valid existence. This clone is substantially in agreement with the reference, but a complete review of all prevailing variants is recommended prior to use. [More info](#)

OTI Annotation:

This clone was engineered to express the complete ORF with an expression tag. Expression varies depending on the nature of the gene.

Components:	The ORF clone is ion-exchange column purified and shipped in a 2D barcoded Matrix tube containing 10ug of transfection-ready, dried plasmid DNA (reconstitute with 100 ul of water).
RefSeq:	NP_570711
RefSeq Size:	285 bp
RefSeq ORF:	1833 bp
Locus ID:	4221
Cytogenetics:	11q13.1
Domains:	Menin
Protein Families:	Druggable Genome, Transcription Factors
MW:	10.5 kDa
Gene Summary:	This gene encodes menin, a tumor suppressor associated with a syndrome known as multiple endocrine neoplasia type 1. Menin is a scaffold protein that functions in histone modification and epigenetic gene regulation. It is thought to regulate several pathways and processes by altering chromatin structure through the modification of histones. [provided by RefSeq, May 2019]