

Product datasheet for **RC403372**

RET (NM_020975) Human Mutant ORF Clone

Product data:

Product Type:	Mutant ORF Clones
Product Name:	RET (NM_020975) Human Mutant ORF Clone
Mutation Description:	R972G
Affected Codon#:	972
Affected NT#:	2914
Nucleotide Mutation:	RET Mutant (R972G), Myc-DDK-tagged ORF clone of Homo sapiens ret proto-oncogene (RET), transcript variant 2 as transfection-ready DNA
Effect:	Hirschsprung disease
Symbol:	RET
Synonyms:	CDHF12; CDHR16; HSCR1; MEN2A; MEN2B; MTC1; PTC; RET-ELE1
E. coli Selection:	Kanamycin (25 ug/mL)
Mammalian Cell Selection:	Neomycin
Vector:	pCMV6-Entry (PS100001)
Tag:	Myc-DDK
ACCN:	NM_020975
ORF Size:	3342 bp
Restriction Sites:	SgfI-MluI
ORF Nucleotide Sequence:	>RC403372 representing NM_020975 Red=Cloning site Blue=ORF Green=Tags(s)

TTTTGTAATACGACTCACTATAGGGCGGCCGGGAATTCGTCGACTGGATCCGGTACCGAGGAGATCTGCC
GCC**GCGATCGCC**

ATGGCGAAGGCGACGTCCGGTGCCGCGGGCTGCGTCTGCTGTTGCTGCTGCTGCCGCTGCTAGGCA
AAGTGGCATTGGGCTCTACTTCTCGAGGGATGCTTACTGGGAGAAGCTGTATGTGGACCAGGCGGCCGG
CACGCCCTTGCTGTACGTCCATGCCCTGCGGGACGCCCTGAGGAGGTGCCAGCTTCCGCTGGCCAG
CATCTCTACGGCACGTACCGCACACGGCTGCATGAGAACAAGTGGATCTGCATCCAGGAGGACACCGGCC
TCCTCTACCTTAACCGGAGCCTGGACCATAGCTCCTGGGAGAAGCTCAGTGTCCGCAACCGCGGCTTTCC
CCTGCTACCGTCTACCTCAAGGTCTTCTGTACCCACATCCCTTCGTGAGGGCGAGTGCCAGTGGCCA
GGCTGTGCCCGGTATACTTCTCCTTCTCAACACCTCCTTTCCAGCCTGCAGCTCCCTCAAGCCCCGGG



[View online »](#)

AGCTCTGCTTCCCAGAGACAAGGCCCTCCTCCGCATTGGGAGAACCGACCCCCAGGCACCTTCCACCA
GTTCCGCCTGCTGCCTGTGCAGTTCTTGTGCCCAACATCAGCGTGGCCTACAGGCTCCTGGAGGGTGAG
GGTCTGCCCTTCCGCTGCGCCCCGGACAGCCTGGAGGTGAGCACGCGCTGGGCCCTGGACCGCGAGCAGC
GGGAGAAGTACGAGCTGGTGGCCGTGTGACCCGTGCACGCCGCGCGCGAGGAGGTGGTGATGGTGCC
CTTCCCGGTGACCGTGTACGACGAGGACGACTCGGCCCCACCTTCCCGCGGGCGTGCACACCGCCAGC
GCCGTGGTGGAGTTCAAGCGGAAGGAGGACACCGTGGTGGCCACGCTGCTCCCGGGGACACCTGGGCCAGCA
TACCTGCATCAGGGGAGCTGGTGGCCGTTACACAAGCAGCCTGCTCCCGGGGACACCTGGGCCAGCA
GACCTTCCGGGTGGAACACTGGCCCAACGAGACCTCGGTCCAGGCCAACGGCAGCTTCGTGCGGGCGACC
GTACATGACTATAGGCTGGTTCTCAACCGGAACCTCTCCATCTCGGAGAACCGCACCATGACAGCTGGCGG
TGCTGGTCAATGACTCAGACTTCCAGGGCCAGGAGCGGGCGTCTCTTGTCTCACTTCAACGTGTCCGT
GCTGCCGGTACGCTGCACCTGCCAGTACCTACTCCCTCTCCGTGAGCAGGAGGGCTCGCCGATTTGCC
CAGATCGGAAAGTCTGTGTGAAAACTGCCAGGCATTAGTGGCATCAACGTCCAGTACAAGCTGCATT
CCTCTGGTGCCAACTGCAGCACGCTAGGGTGGTACCTCAGCCGAGGACACCTCGGGATCCTGTTTGT
GAATGACACCAAGGCCCTGCGGGGCCCAAGTGTGCCAACTTACTACATGGTGGTGGCCACCGACCAG
CAGACCTTAGGCAGGCCAGGCCAGCTGCTTGAACAGTGGAGGGTTCATATGTGGCCGAGGAGCGCG
GCTGCCCCCTGCTCTGTCAGTACGAAAGAGACGGCTGGAGTGTGAGGAGTGTGGCGGCCCTGGGCTCCCC
AACAGGCAGGTGTGAGTGGAGGCAAGGAGATGGCAAAGGGATCACAGGAACTTCTCCACCTGCTCTCCC
AGCACCAAGACCTGCCCGACGGCCACTGCGATGTTGTGGAGACCCAAGACATCAACATTTGCCCTCAGG
ACTGCCTCCGGGCGACATTGTTGGGGACACGAGCCTGGGGAGCCCCGGGGATTAAAGCTGGCTATGG
CACCTGCAACTGCTTCCCTGAGGAGGAGAAGTGCTTCTGCGAGCCGAAGACATCCAGGATCCACTGTGC
GACGAGCTGTGCCGACGGTGTGCGAGCCGCTGCTCTTCTCTTTCATCGTCTCGGTGCTGCTGTCTG
CCTTCTGCATCCACTGCTACCACAAGTTTCCCAACAAGCCACCATCTCCTCAGCTGAGATGACCTTCCG
GAGGCCCGCCAGGCCCTCCCGGTGAGTACTCTCTCCGGTCCCGCCCGGCCCTCGTGAGTCCATG
GAGAACCAGGTCTCCGTGGATGCCTTCAAGATCCTGGAGGATCCAAAGTGGGAATTCCTCGGAAGAACT
TGGTTCTTGGAAAACTTAGGAGAAGGCAATTTGAAAAAGTGGTCAAGGCAACGGCCTTCCATCTGAA
AGGCAGAGCAGGGTACACCACGGTGGCCGTGAAGATGCTGAAAGAGAACGCCTCCCCGAGTGAGTTCGA
GACCTGCTGTCAGAGTCAACGTCTGAAGCAGGTCAACCACCCACATGTCATCAAATTTATGGGGCT
GCAGCCAGGATGGCCCGCTCCTCCTCATCGTGGAGTACGCCAAATACGGCTCCCTGCGGGGCTTCTCCG
CGAGAGCCGAAAAGTGGGGCTGGCTACCTGGGACGTGGAGGCAGCCGCAACTCCAGCTCCCTGGACCAC
CCGGATGAGCGGGCCCTCACCATGGGCGACCTCATCTCATTTCCTGGCAGATCTCACAGGGATGCAGT
ATCTGGCCGAGATGAAGCTCGTTCATCGGGACTTGGCAGCCAGAAACATCCTGGTAGCTGAGGGCGGAA
GATGAAGATTTCCGATTTCCGGCTTGCCCGAGATGTTTATGAAGAGGATTCCTACGTGAAGAGGACCCAG
GGTCGGATTCAGTTAAATGGATGGCAATTTGAATCCCTTTTTGATCATATCTACACCACGCAAAGTGATG
TATGGTCTTTGGTGTCTGCTGTGGGAGATCGTGACCCTAGGGGGAAACCCCTATCCTGGGATTCCTCC
TGAGCGGCTCTTCAACCTTCTGAAGACCGGCCACCGGATGGAGGGGCCAGACAACTGCAGCGAGGAGATG
TACCGCTGATGCTGCAATGCTGGAAGCAGGAGCCGGACAAAAGGCCGGTGTGGCGGACATCAGCAAAG
ACCTGGAGAAGATGATGGTTAAGAGGAGAGACTACTTGGACCTTGGCGGTCCACTCCATCTGACTCCCT
GATTTATGACGACGGCCTCTCAGAGGAGGAGACACCGCTGGTGGACTGTAATAATGCCCCCTCCCTCGA
GCCCTCCCTTCCACATGGATTGAAAACAACTCTATGGCATGTCAGACCCGAACCTGGCCGGAGAGATG
CTGTACCACTCAGAGAGCTGATGGCACTAACACTGGGTTTCCAAGATATCCAAATGATAGTGTATATGC
TAACTGGATGCTTTCACCTCAGCGGCAAAATTAATGGACACGTTTGATAGT

AGCGGACCGACGCGTACGCGGCCGCTCGAGCAGAACTCATCTCAGAAGAGGATCTGGCAGCAAATGATATCC
TGGATTACAAGGATGACGACGA TAAGGTTTAA

Protein Sequence: >RC403372 representing NM_020975
 Red=Cloning site Green=Tags(s)

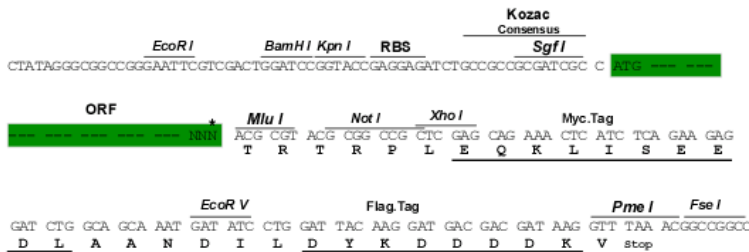
MAKATSGAAGRLLLLLLLPLLGLKVALGLYFSRDAYWEKLYVDQAAGTPLLYVHALRDAPEEVPSFRLGQ
 HLYGTYRTRLHENNWICIQEDTGLLYLNRSLDHSSWEKLSVRNRGFPLLTVYLVKVFLLSPTSLREGECQWP
 GCARVYFSFFNTSFPACSSLKPRELCFPETRPSFRIENRPPGTFHQFRLLPVQFLCPNISVAYRLLGE
 GLPFRCAPDSLEVSTRWALDREQREKVELVAVCTVHAGAREEVVMVFPVTVYDEDDSAFTFPAGVDTAS
 AVVEFKRKEDTVVATLRVFDADVPASGELVRRYTSTLLPGDTWAQQTFRVEHWPNETSVQANGSFVRAT
 VHDYRLVLNRNLSISENRTMQLAVLVNDSDFQGPAGVLLLFHNVSVLPVSLHLPSTYSLSVSRARRFA
 QIGKVCVENCQAFSGINVQYKLHSSGANCSTLGVVTS AEDTSGILFVNDTKALRRPKCAELHYMVVATDQ
 QTSRQAQAQLLVTVEGSYVAEEAGCPLSCAVSKRRLECEECGGLGSPTRCEWRQGDGKGITRNFSTCSP
 STKTCPDGHCDVVETQDINICPDQLRGSIVGGHEPGEPRGIKAGYGTNCNCFPEEEKCFCEPEDIQDPLC
 DELCRTVIAAAVLF SFI VSVLLSAFCIHCYHKFAHKPPISSAEMTFRRPAQAFPVSYSSSGARRPSLDSM
 ENQVSDAFKILEDPKWEFPRKNLVLGKTLGEGEFGKVVKATAFHLKGRAGYTTVAVKMLKENASPSSELR
 DLLSEFNVLKQVNHPHVIKLYGACSDQGPLLLIVEYAKYGSRLRGLRESRKVGPYLGSGGSRNSSSLDH
 PDERALTMGDLISFAWQISQGMQYLAEMKLVHRDLAARNILVAEGRMKISDFGLSRDVEEDSYVKRSQ
 GRIPVKWMAIESLFDHIYTTQSDVWVSGVLLWEIVTLGGNPYPGIPPERLFNLLKTGHRMEGPDNCSEEM
 YRLMLQCWKQEPDKRPVFADISKDLEKMMVKRRDYLDLAASTPSDSL IYDDGLSEEETPLVDCNNAPLPR
 ALPSTWIENKLYGMSDPNWPGESPVPLTRADGTNTGFPYPND SVYANWMLSPSAAKLMDTFDS

SGPTRRRLEQKLI SEEDLAANDILDYKDDDDKV

Restriction Sites: SgfI-MluI

Cloning Scheme:

Cloning sites used for ORF Shutting:



* The last codon before the Stop codon of the ORF

OTI Disclaimer: The molecular sequence of this clone aligns with the gene accession number as a point of reference only. However, individual transcript sequences of the same gene can differ through naturally occurring variations (e.g. polymorphisms), each with its own valid existence. This clone is substantially in agreement with the reference, but a complete review of all prevailing variants is recommended prior to use. [More info](#)

OTI Annotation: This clone was engineered to express the complete ORF with an expression tag. Expression varies depending on the nature of the gene.

Components:	The ORF clone is ion-exchange column purified and shipped in a 2D barcoded Matrix tube containing 10ug of transfection-ready, dried plasmid DNA (reconstitute with 100 ul of water).
RefSeq:	NP_066124
RefSeq Size:	3342 bp
RefSeq ORF:	3345 bp
Locus ID:	5979
Cytogenetics:	10q11.21
Protein Families:	Druggable Genome, Protein Kinase, Transmembrane
Protein Pathways:	Endocytosis, Pathways in cancer, Thyroid cancer
MW:	122.5 kDa
Gene Summary:	This gene encodes a transmembrane receptor and member of the tyrosine protein kinase family of proteins. Binding of ligands such as GDNF (glial cell-line derived neurotrophic factor) and other related proteins to the encoded receptor stimulates receptor dimerization and activation of downstream signaling pathways that play a role in cell differentiation, growth, migration and survival. The encoded receptor is important in development of the nervous system, and the development of organs and tissues derived from the neural crest. This proto-oncogene can undergo oncogenic activation through both cytogenetic rearrangement and activating point mutations. Mutations in this gene are associated with Hirschsprung disease and central hypoventilation syndrome and have been identified in patients with renal agenesis. [provided by RefSeq, Sep 2017]