

Product datasheet for **RC403363**

RET (NM_020975) Human Mutant ORF Clone

Product data:

Product Type:	Mutant ORF Clones
Product Name:	RET (NM_020975) Human Mutant ORF Clone
Mutation Description:	R912P
Affected Codon#:	912
Affected NT#:	2735
Nucleotide Mutation:	RET Mutant (R912P), Myc-DDK-tagged ORF clone of Homo sapiens ret proto-oncogene (RET), transcript variant 2 as transfection-ready DNA
Effect:	Thyroid cancer
Symbol:	RET
Synonyms:	CDHF12; CDHR16; HSCR1; MEN2A; MEN2B; MTC1; PTC; RET-ELE1
E. coli Selection:	Kanamycin (25 ug/mL)
Mammalian Cell Selection:	Neomycin
Vector:	pCMV6-Entry (PS100001)
Tag:	Myc-DDK
ACCN:	NM_020975
ORF Size:	3342 bp
Restriction Sites:	SgfI-MluI
ORF Nucleotide Sequence:	>RC403363 representing NM_020975 Red=Cloning site Blue=ORF Green=Tags(s)

TTTTGTAATACGACTCACTATAGGGCGGCCGGGAATTCGTCGACTGGATCCGGTACCGAGGAGATCTGCC
GCC**GCGATCGCC**

ATGGCGAAGGCGACGTCCGGTGCCGCGGGGCTGCGTCTGCTGTTGCTGCTGCTGCCGCTGCTAGGCA
AAGTGGCATTGGGCTCTACTTCTCGAGGGATGCTTACTGGGAGAAGCTGTATGTGGACCAGCGGCCGG
CACGCCCTTGCTGTACGTCCATGCCCTGCGGGACGCCCTGAGGAGGTGCCAGCTTCCGCTGGCCAG
CATCTCTACGGCACGTACCGCACACGGCTGCATGAGAACAAGTGGATCTGCATCCAGGAGGACACCGGCC
TCCTCTACCTTAACCGGAGCCTGGACCATAGCTCCTGGGAGAAGCTCAGTGTCCGAACCGCGGCTTTCC
CCTGCTACCGTCTACCTCAAGGTCTTCTGTACCCACATCCCTTCGTGAGGGCGAGTGCCAGTGGCCA
GGCTGTGCCCGGTATACTTCTCCTTCTCAACACCTCCTTTCCAGCCTGCAGCTCCCTCAAGCCCCGGG



[View online »](#)

AGCTCTGCTTCCCAGAGACAAGGCCCTCCTCCGCATTGGGAGAACCGACCCCCAGGCACCTTCCACCA
GTTCCGCCTGCTGCCTGTGCAGTTCTTGTGCCCAACATCAGCGTGGCCTACAGGCTCCTGGAGGGT
GGTCTGCCCTTCCGCTGCGCCCCGGACAGCCTGGAGGTGAGCAGCGCTGGGCCCTGGACCGGAGCAGC
GGGAGAAGTACGAGCTGGTGGCCGTGTGACCCGTGCACGCCGGCGCGCGGAGGAGTGGTATGGTGCC
CTTCCCGGTGACCGTGTACGACGAGGACGACTCGGCCCCACCTTCCCGCGGGCGTGCACACGCCAGC
GCCGTGGTGGAGTTCAAGCGGAAGGAGGACACCGTGGTGGCCACGCTGCTCCCGGGGACACCTGGGCCAGCA
TACCTGCATCAGGGGAGCTGGTGGCCGTTACACAAGCAGCCTGCTCCCGGGGACACCTGGGCCAGCA
GACCTTCCGGGTGGAACACTGGCCCAACGAGACCTCGGTCCAGGCCAACGGCAGCTTCGTGCGGGCGACC
GTACATGACTATAGGCTGGTTCTCAACCGGAACCTCTCCATCTCGGAGAACCGCACCATGCACTGGCGG
TGCTGGTCAATGACTCAGACTTCCAGGGCCAGGAGCGGGCGTCTCTTGTCTCACTTCAACGTGTCCGT
GCTGCCGGTACGCTGCACCTGCCAGTACCTACTCCCTCTCCGTGAGCAGGAGGGCTCGCCGATTTGCC
CAGATCGGAAAGTCTGTGTGAAAAGTCCAGGCATTAGTGGCATCAACGTCCAGTACAAGCTGCATT
CCTCTGGTGCCAACTGCAGCAGCTAGGGTGGTACCTCAGCCGAGGACACCTCGGGATCCTGTTTGT
GAATGACACCAAGGCCCTGCGGGGCCAAGTGTGCCAACTTACTACATGGTGGTGGCCACCGACCAG
CAGACCTTAGGCAGGCCAGGCCAGCTGCTTGAACAGTGGAGGGTCAATATGTGGCCGAGGAGCGG
GCTGCCCCCTGTCTGTGCACTCAGCAAGAGACGGCTGGAGTGTGAGGAGTGTGGCGGCCTGGGCTCCCC
AACAGGCAAGTGTGAGTGGAGGCAAGGAGATGGCAAAGGGATCACAGGAACTTCTCACCTGCTCTCCC
AGCACCAAGACCTGCCCGACGGCCACTGCGATGTTGTGGAGACCAAGACATCAACATTTGCCCTCAGG
ACTGCCTCCGGGCGACATTGTTGGGGACACGAGCCTGGGGAGCCCCGGGGATTAAAGCTGGCTATGG
CACCTGCAACTGCTTCCCTGAGGAGGAGAAGTCTTCTGCGAGCCGAAGACATCCAGGATCCACTGTGC
GACGAGCTGTGCCGACGGTGTGCGAGCCGTGCTCTTCTCTTTCATCGTCTCGGTGCTGCTGTCTG
CCTTCTGCATCCACTGCTACCACAAGTTTCCCAAGCCACCCATCTCCTCAGCTGAGATGACCTTCCG
GAGCCCCGCCAGGCCCTCCCGGTGAGTACTCTCTCCGGTCCCGCCGGCCCTCGTGAGTCCATG
GAGAACCAGGTCTCCGTGGATGCCTTCAAGATCCTGGAGGATCCAAAGTGGGAATTCCTCGGAAGAACT
TGGTTCTTGAAAAAAGTCTAGGAGAAGGCAATTTGAAAAAGTGGTCAAGGCAACGGCCTTCCATCTGAA
AGGAGAGCAGGGTACACCACGGTGGCCGTGAAGATGCTGAAAGAGAACGCCTCCCCGAGTGAAGTTCGA
GACCTGCTGTGAGTTCACAGTCTGAAGCAGGTCAACCACCCACATGTATCAAAATGATGGGGCT
GCAGCCAGGATGGCCCGCTCCTCCTCATCGTGGAGTACGCCAAATACGGCTCCCTGCGGGGCTTCTCCG
CGAGAGCCGAAAAGTGGGGCTGGCTACCTGGGAGTGGAGGCAGCCGCAACTCCAGCTCCCTGGACCAC
CCGGATGAGCGGGCCCTCACCATGGGCGACCTCATCTCATTGCTGGCAGATCTCACAGGGATGCAGT
ATCTGGCCGAGATGAAGCTCGTTCATCGGGACTTGGCAGCCAGAAACATCCTGGTGTAGTGAAGGGCGGAA
GATGAAGATTTCCGATTTCCGGCTTGTCCCGAGATGTTTATGAAGAGGATTCCTACGTGAAGAGGACCCAG
GGTCCGATTCAGTAAATGGATGGCAATTGAATCCCTTTTTGATCATATCTACACCACGAAAAGTATG
TATGGTCTTTGGTGTCTGCTGTGGGAGATCGTGACCCTAGGGGGAAACCCCTATCCTGGGATTCCTCC
TGAGCGGCTCTTCAACCTTCTGAAGACCGGCCACCGGATGGAGAGGCCAGACAACTGCAGCGAGGAGATG
TACCGCTGATGCTGCAATGCTGGAAGCAGGAGCCGACAAAAGGCCGGTGTGCGGACATCAGCAAAG
ACCTGGAGAAGATGATGGTTAAGAGGAGAGACTACTTGGACCTTGGCGGTCCACTCCATCTGACTCCCT
GATTTATGACGACGGCCTCTCAGAGGAGGAGACACCGCTGGTGGACTGTAAATGCCCCCTCCCTCGA
GCCCTCCCTTCCACATGGATTGAAAACAACTCTATGGCATGTCAGACCCGAACTGGCCGGAGAGATG
CTGTACCACTCAGAGAGCTGATGGCACTAACACTGGGTTTCCAAGATATCCAAATGATGTATATGC
TAACTGGATGCTTTCACCTCAGCGGCAAAATTAATGGACACGTTTGTATG

AGCGGACCGACGCGTACGCGGCCGCTCGAGCAGAACTCATCTCAGAAGAGGATCTGGCAGCAAATGATATCC
TGGATTACAAGGATGACGACGA TAAGGTTTAA

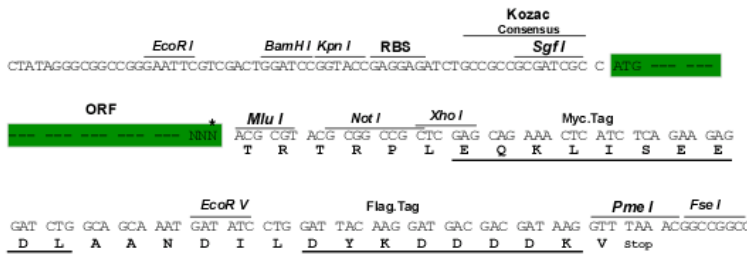
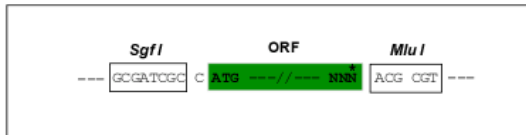
Protein Sequence: >RC403363 representing NM_020975
 Red=Cloning site Green=Tags(s)

MAKATSGAAGRLRLLLLLLPLLGLKVALGLYFSRDAYWEKLYVDQAAGTPLLYVHALRDAPEEVPSFRLGQ
 HLYGTYRTRLHENNWICIQEDTGLLYLNRSLDHSSWEKLSVRNRGFPLLTYYLKVFLSPTSLREGECQWP
 GCARVYFSFFNTSFPACSSLKPRELCPETRPSFRIENRPPGTFHQFRLLPVQFLCPNISVAYRLLGE
 GLPFRCAPDSLEVSTRWALDREQREKVELVAVCTVHAGAREEVMVFPVTVYDEDDSAPTFPAGVDTAS
 AVVEFKRKEDTVVATLRVFDADVVPASGELVRRYTSLLPGDTWAQQTFRVEHWPNETSVQANGSFVRAT
 VHDYRLVLNRNLSISENRTMQLAVLVNDSDFQGGAGVLLLHFNVSVLVPSLHLPSTYSLSVSRARRFA
 QIGKVCVENCQAFSGINVQYKLHSSGANCSLGVVTSAEDTSGILFVNDTKALRRPKCAELHYMVVATDQ
 QTSRQAQQLLVTVESYVAEEAGCPLSCAVSKRRLCEECGGLGSPTRCEWRQDGGKITRNFSTCSP
 STKTCPDGHCDVVETQDINICPDQLRGSIVGGHEPGEPRGIKAGYGTNCNCFPEEEKCFCEPEDIQDPLC
 DELCRTVIAAAVLFSFIVSVLLSAFCIHCHYKFAHKPPISSAEMTFRRPAQAFPVSYSSSGARRPSLDSM
 ENQVSVDAFKILEDPKWEPFRKNLVLGKTLGEGEFGKVVKATAFHLLKGRAGYTTVAVKMLKENASPSLR
 DLLSEFNVLKQVNHPIKLYGACSDGPLLLIVEYAKYGLRGLRESRKVGPGLGSGGSRNSSLDDH
 PDERALTMGDLISFAWQISQGMQYLAEMLVHRDLAARNILVAEGRMKISDFGLSRDVEEDSYVKRSQ
 GPIPVKMAIESLFDHIYTTQSDVWVSGVLLWEIVTLGGNYPGIPPERLFNLLKTGHRMERPDNCSEEM
 YRLMLQCWKQEPDKRPVFADISKDLEKMMVKRRDYLDAASTPDSL IYDDGLSEEETPLVDCNNAPLR
 ALPSTWIENKLYGMSDPNWPGESPVPLTRADGTNTGPRYPNDSVYANWMLSPSAAKLMDTFDS

SGPTRRRLEQKLI SEEDLAANDILDYKDDDDKV

Restriction Sites: SgfI-MluI
 Cloning Scheme:

Cloning sites used for ORF Shutting:



* The last codon before the Stop codon of the ORF

OTI Disclaimer: The molecular sequence of this clone aligns with the gene accession number as a point of reference only. However, individual transcript sequences of the same gene can differ through naturally occurring variations (e.g. polymorphisms), each with its own valid existence. This clone is substantially in agreement with the reference, but a complete review of all prevailing variants is recommended prior to use. [More info](#)

OTI Annotation: This clone was engineered to express the complete ORF with an expression tag. Expression varies depending on the nature of the gene.

Components:	The ORF clone is ion-exchange column purified and shipped in a 2D barcoded Matrix tube containing 10ug of transfection-ready, dried plasmid DNA (reconstitute with 100 ul of water).
Note:	Plasmids are not sterile. For experiments where strict sterility is required, filtration with 0.22um filter is required.
RefSeq:	NP_066124
RefSeq Size:	3342 bp
RefSeq ORF:	3345 bp
Locus ID:	5979
Cytogenetics:	10q11.21
Protein Families:	Druggable Genome, Protein Kinase, Transmembrane
Protein Pathways:	Endocytosis, Pathways in cancer, Thyroid cancer
MW:	122.5 kDa
Gene Summary:	This gene encodes a transmembrane receptor and member of the tyrosine protein kinase family of proteins. Binding of ligands such as GDNF (glial cell-line derived neurotrophic factor) and other related proteins to the encoded receptor stimulates receptor dimerization and activation of downstream signaling pathways that play a role in cell differentiation, growth, migration and survival. The encoded receptor is important in development of the nervous system, and the development of organs and tissues derived from the neural crest. This proto-oncogene can undergo oncogenic activation through both cytogenetic rearrangement and activating point mutations. Mutations in this gene are associated with Hirschsprung disease and central hypoventilation syndrome and have been identified in patients with renal agenesis. [provided by RefSeq, Sep 2017]