

## Product datasheet for RC403322

### RET (NM\_020975) Human Mutant ORF Clone

#### Product data:

Product Type:	Mutant ORF Clones
Product Name:	RET (NM_020975) Human Mutant ORF Clone
Mutation Description:	E762Q
Affected Codon#:	762
Affected NT#:	2284
Nucleotide Mutation:	RET Mutant (E762Q), Myc-DDK-tagged ORF clone of Homo sapiens ret proto-oncogene (RET), transcript variant 2 as transfection-ready DNA
Effect:	Hirschsprung disease
Symbol:	RET
Synonyms:	CDHF12; CDHR16; HSCR1; MEN2A; MEN2B; MTC1; PTC; RET-ELE1
E. coli Selection:	Kanamycin (25 ug/mL)
Mammalian Cell Selection:	Neomycin
Vector:	pCMV6-Entry (PS100001)
Tag:	Myc-DDK
ACCN:	NM_020975
ORF Size:	3342 bp
Restriction Sites:	SgfI-MluI
ORF Nucleotide Sequence:	>RC403322 representing NM_020975 Red=Cloning site Blue=ORF Green=Tags(s)

TTTTGTAATACGACTCACTATAGGGCGGCCGGGAATTCGTCGACTGGATCCGGTACCGAGGAGATCTGCC  
GCCGCGATCGCC

ATGGCGAAGGCGACGTCCGGTGCCGCGGGGCTGCGTCTGCTGTTGCTGCTGCTGCCGCTGCTAGGCA  
AAGTGGCATTGGGCTCTACTTCTCGAGGGATGCTTACTGGGAGAAGCTGTATGTGGACCAGGCGGCCGG  
CACGCCCTTGCTGTACGTCCATGCCCTGCGGGACGCCCTGAGGAGGTGCCAGCTTCCGCTGGCCAG  
CATCTCTACGGCACGTACCGCACACGGCTGCATGAGAACAACCTGGATCTGCATCCAGGAGGACACCGGCC  
TCCTCTACCTTAACCGGAGCCTGGACCATAGCTCCTGGGAGAAGCTCAGTGTCCGCAACCGCGGCTTTCC  
CCTGCTACCGTCTACCTCAAGGTCTTCTGTACCCACATCCCTTCGTGAGGGCGAGTGCCAGTGGCCA  
GGCTGTGCCCGGTATACTTCTCCTTCTCAACACCTCCTTTCCAGCCTGCAGCTCCCTCAAGCCCCGGG



[View online »](#)

AGCTCTGCTTCCCAGAGACAAGGCCCTCCTCCGCATTGGGAGAACCGACCCCCAGGCACCTTCCACCA  
GTTCCGCCTGCTGCCTGTGCAGTTCTTGTGCCCAACATCAGCGTGGCCTACAGGCTCCTGGAGGGTGAG  
GGTCTGCCCTTCCGCTGCGCCCCGGACAGCCTGGAGGTGAGCACGCGCTGGGCCCTGGACCGCAGCAGC  
GGGAGAAGTACGAGCTGGTGGCCGTGTGACCCGTGCACGCCGCGCGCGGAGGAGTGGTGATGGTGCC  
CTTCCCGGTGACCGTGTACGACGAGGACGACTCGGCCCCACCTTCCCGCGGGCGTGCACACCGCCAGC  
GCCGTGGTGGAGTTCAAGCGGAAGGAGGACACCGTGGTGGCCACGCTGCTCCCGGGGACACCTGGGCCAGCA  
TACCTGGATCAGGGGAGCTGGTGGCCGATACACAAGCAGCCTGCTCCCGGGGACACCTGGGCCAGCA  
GACCTTCCGGGTGGAACACTGGCCCAACGAGACCTCGGTCCAGGCCAACGGCAGCTTCGTGCGGGCGACC  
GTACATGACTATAGGCTGGTTCTCAACCGGAACCTCTCCATCTCGGAGAACCGCACCATGACAGCTGGCGG  
TGCTGGTCAATGACTCAGACTTCCAGGGCCAGGAGCGGGCGTCTCTTGTCTCACTTCAACGTGTCCGT  
GCTGCCGGTACGCTGCACCTGCCAGTACCTACTCCCTCTCCGTGAGCAGGAGGGCTCGCCGATTTGCC  
CAGATCGGAAAGTCTGTGTGAAAAGTCCAGGCATTAGTGGCATCAACGTCCAGTACAAGCTGCATT  
CCTCTGGTGCCAACTGCAGCAGCTAGGGTGGTACCTCAGCCGAGGACACCTCGGGATCCTGTTTGT  
GAATGACACCAAGGCCCTGCGGGGCCAAGTGTGCCAACTTACTACATGGTGGTGGCCACCGACCAG  
CAGACCTTAGGCAGGCCAGGCCAGCTGCTTGAACAGTGGAGGGTCAATATGTGGCCGAGGAGCGG  
GCTGCCCCCTGTCTGTGAGTACGCAAGAGACGGCTGGAGTGTGAGGAGTGTGGCGGCCTGGGCTCCCC  
AACAGGCAGGTGTGAGTGGAGGCAAGGAGATGGCAAAGGGATCACAGGAACTTCTCACCTGCTCTCCC  
AGCACCAAGACCTGCCCGACGGCCACTGCGATGTTGTGGAGACCAAGACATCAACATTTGCCCTCAGG  
ACTGCCTCCGGGCGACATTGTTGGGGACACGAGCCTGGGGAGCCCCGGGGATTAAAGCTGGCTATGG  
CACCTGCAACTGCTTCCCTGAGGAGGAGAAGTGCTTCTGCGAGCCGAAGACATCCAGGATCCACTGTGC  
GACGAGCTGTGCCGACGGTGTGCGAGCCGTGCTCTTCTCTTTCATCGTCTCGGTGCTGCTGTCTG  
CCTTCTGCATCCACTGCTACCACAAGTTTCCCAAGCCACCCATCTCCTCAGCTGAGATGACCTTCCG  
GAGGCCCGCCAGGCCCTCCCGGTGAGTACTCTCTCCGGTCCCGCCCGCCCTCGTGAGTCCATG  
GAGAACCAGGTCTCCGTGGATGCTTCAAGATCCTGGAGGATCCAAAGTGGGAATTCCTCGGAAGAACT  
TGGTTCTTGGAAAAGTCTAGGAGAAGGCAATTTGAAAAGTGGTCAAGGCAACGGCCTTCCATCTGAA  
AGGCAGAGCAGGGTACACCACGGTGGCCGTGAAGATGCTGAAACAGAACGCCTCCCCGAGTGAGTTCGA  
GACCTGCTGTGAGTTCACAGTCTGAAGCAGGTCAACCACCCACATGTGATCAAAATGATGGGGCT  
GCAGCCAGGATGGCCCGCTCCTCCTCATCGTGGAGTACGCCAAATACGGCTCCCTGCGGGGCTTCTCCG  
CGAGAGCCGAAAAGTGGGGCTGGCTACCTGGGAGTGGAGGCAGCCGCAACTCCAGCTCCCTGGACCAC  
CCGGATGAGCGGGCCCTCACCATGGGCGACCTCATCTCATTGCTGGCAGATCTCACAGGGATGCAGT  
ATCTGGCCGAGATGAAGCTCGTTCATCGGGACTTGGCAGCCAGAAACATCCTGGTAGCTGAGGGCGGAA  
GATGAAGATTTCCGATTTCCGGCTGTCCCGAGATGTTTATGAAGAGGATTCCTACGTGAAGAGGACCCAG  
GGTCGGATTCCAGTTAAATGGATGGCAATTGAATCCCTTTTTGATCATATCTACACCACGAAAAGTGATG  
TATGGTCTTTGGTGTCTGCTGTGGGAGATCGTGACCCTAGGGGGAAACCCCTATCCTGGGATTCCTCC  
TGAGCGGCTCTTCAACCTTCTGAAGACCGGCCACCGGATGGAGAGGCCAGACAACTGCAGCGAGGAGATG  
TACCGCTGATGCTGCAATGCTGGAAGCAGGAGCCGACAAAAGGCCGGTGTGGCGGACATCAGCAAAG  
ACCTGGAGAAGATGATGGTTAAGAGGAGAGACTACTTGGACCTTGGCGGTCCACTCCATCTGACTCCCT  
GATTTATGACGACGGCCTCTCAGAGGAGGAGACACCGCTGGTGGACTGTAAATGCCCCCTCCCTCGA  
GCCCTCCCTTCCACATGGATTGAAAACAACTCTATGGCATGTCAGACCCGAACCTGGCCGGAGAGATG  
CTGTACCACTCAGAGAGCTGATGGCACTAACACTGGGTTTCCAAGATATCCAAATGATGTATATGC  
TAACTGGATGCTTTCACCTCAGCGGCAAAATTAATGGACACGTTTGATAGT

AGCGGACCGACGCGTACGCGGCCGCTCGAGCAGAACTCATCTCAGAAGAGGATCTGGCAGCAAATGATATCC  
TGGATTACAAGGATGACGACGA TAAGGTTTAA

**Protein Sequence:** >RC403322 representing NM\_020975  
Red=Cloning site Green=Tags(s)

```

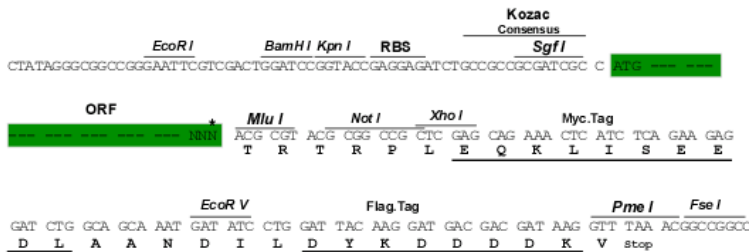
MAKATSGAAGLRLLLLLLLLPLLGKVALGLYFSRDAYWEKLYVDQAAGTPLYVHALRDAPEEVPSFRLGQ
HLYGTYRTRLHENNWICIQEDTGLLYLNRLSDHSSWEKLSVRNRRGFLLTVYLVKVFVLSLREGECQWP
GCARVYFSFFNTSFPACSSSLKPRELCPETRPSFRIRENRPPGTFHQFRLLPVQFLCPNISVAYRLLIGE
GLPFRCAPDSLEVSTRWALDREQREKVELVAVCTVHAGAREEVVMVPPVTVYDEDDSAFTFPAGVDTAS
AVVEFKRKEDTVVATLRFVDADVPASGELVRRYVSTLLPGDTWAQQTFRVEHWPNETSVQANGSFVRAT
VHDYRLLVLRNLSISENRTMQLAVLVNDSDFQGPAGVLLLHFNVSVLPVSLHLPSTYSLSVSRARRFA
QIGKVCVENCQAFSGINVQYKLGSSGANCSTLVVTSIEDTSGILFVNDKALRRPKCAELHYMVVATDQ
QTSRQAQALLVTVEGSYVAEEAGCPLSCAVSKRRLCECECGGLGSPTRCEWRQGDGKITRNFSTCSP
STKTCPDGHCDDVVETQDINICPDCLRGSIVGGHEPGEPRGIKAGYGTCCNFPEEEKCFCEPEDIQDPLC
DELCRTVIAAVALFVSFIVSVLLSAFCIHCVKFAHKPPISSAEMTFRRAQAFVPSYSSSGARRPSLDSM
ENQVSVDAFKILEDPKWEFPKRNVLVGLKTLGEGEFGKVVKATAFHKLKGRAGYTTVAVKMLKQNASPELR
DLLSEFNVLKQVNHPhVIKLYGACSDQDGLLIVEYAKYGLRGLRESRVKVPGYLGSGGRNSSSLDH
PDERALTMGDLISFAWQISQGMQYLAEMLKVRDLAARNILVAEGRMKISDFGLSRDVEEDSYVQRSQ
GRIPVKWMAIESLFDHIYTTQSDVVSFVLLWEIVTLGPNYPGPPIPERLFNLLKTGHRMERPDNCSEEM
YRLMLQCWKQEPDKRPVFADISKDLEKMMVKRRDYLDAASTPSDSLIIYDDGLSEEETPLVDCNNAPLPR
ALPSTWIENKLYGMSDPNWPGESPVPLTRADGTNTGFPRYPNDSVYANWMLSPSAAKLMDTFDS
    
```

SGPTRRRLEQKLI SEEDLAANDILDYKDDDDKV

**Restriction Sites:**

SgfI-MluI

**Cloning Scheme:**



\* The last codon before the Stop codon of the ORF

**OTI Disclaimer:**

The molecular sequence of this clone aligns with the gene accession number as a point of reference only. However, individual transcript sequences of the same gene can differ through naturally occurring variations (e.g. polymorphisms), each with its own valid existence. This clone is substantially in agreement with the reference, but a complete review of all prevailing variants is recommended prior to use. [More info](#)

**OTI Annotation:**

This clone was engineered to express the complete ORF with an expression tag. Expression varies depending on the nature of the gene.

<b>Components:</b>	The ORF clone is ion-exchange column purified and shipped in a 2D barcoded Matrix tube containing 10ug of transfection-ready, dried plasmid DNA (reconstitute with 100 ul of water).
<b>RefSeq:</b>	<a href="#">NP_066124</a>
<b>RefSeq Size:</b>	3342 bp
<b>RefSeq ORF:</b>	3345 bp
<b>Locus ID:</b>	5979
<b>Cytogenetics:</b>	10q11.21
<b>Protein Families:</b>	Druggable Genome, Protein Kinase, Transmembrane
<b>Protein Pathways:</b>	Endocytosis, Pathways in cancer, Thyroid cancer
<b>MW:</b>	122.5 kDa
<b>Gene Summary:</b>	This gene encodes a transmembrane receptor and member of the tyrosine protein kinase family of proteins. Binding of ligands such as GDNF (glial cell-line derived neurotrophic factor) and other related proteins to the encoded receptor stimulates receptor dimerization and activation of downstream signaling pathways that play a role in cell differentiation, growth, migration and survival. The encoded receptor is important in development of the nervous system, and the development of organs and tissues derived from the neural crest. This proto-oncogene can undergo oncogenic activation through both cytogenetic rearrangement and activating point mutations. Mutations in this gene are associated with Hirschsprung disease and central hypoventilation syndrome and have been identified in patients with renal agenesis. [provided by RefSeq, Sep 2017]