

## Product datasheet for **RC403320**

### RET (NM\_020975) Human Mutant ORF Clone

#### Product data:

Product Type:	Mutant ORF Clones
Product Name:	RET (NM_020975) Human Mutant ORF Clone
Mutation Description:	T729A
Affected Codon#:	729
Affected NT#:	2185
Nucleotide Mutation:	RET Mutant (T729A), Myc-DDK-tagged ORF clone of Homo sapiens ret proto-oncogene (RET), transcript variant 2 as transfection-ready DNA
Effect:	Hirschsprung disease
Symbol:	RET
Synonyms:	CDHF12; CDHR16; HSCR1; MEN2A; MEN2B; MTC1; PTC; RET-ELE1
E. coli Selection:	Kanamycin (25 ug/mL)
Mammalian Cell Selection:	Neomycin
Vector:	pCMV6-Entry (PS100001)
Tag:	Myc-DDK
ACCN:	NM_020975
ORF Size:	3342 bp
Restriction Sites:	SgfI-MluI
ORF Nucleotide Sequence:	>RC403320 representing NM_020975 Red=Cloning site Blue=ORF Green=Tags(s)

TTTTGTAATACGACTCACTATAGGGCGGCCGGGAATTCGTCGACTGGATCCGGTACCGAGGAGATCTGCC  
GCC**GCGATCGCC**

ATGGCGAAGGCGACGTCCGGTGCCGCGGGGCTGCGTCTGCTGTTGCTGCTGCTGCCGCTGCTAGGCA  
AAGTGGCATTGGGCTCTACTTCTCGAGGGATGCTTACTGGGAGAAGCTGTATGTGGACCAGGCGGCCGG  
CACGCCCTTGCTGTACGTCCATGCCCTGCGGGACGCCCTGAGGAGGTGCCAGCTTCCGCTGGCCAG  
CATCTCTACGGCACGTACCGCACACGGCTGCATGAGAACAACCTGGATCTGCATCCAGGAGGACACCCGGCC  
TCCTCTACCTTAACCGGAGCCTGGACCATAGCTCCTGGGAGAAGCTCAGTGTCCGCAACCCGGGCTTTCC  
CCTGCTACCGTCTACCTCAAGGTCTTCTGTACCCACATCCCTTCGTGAGGGCGAGTGCCAGTGGCCA  
GGCTGTGCCCGGTATACTTCTCCTTCTCAACACCTCCTTTCCAGCCTGCAGCTCCCTCAAGCCCCGGG



[View online »](#)

AGCTCTGCTTCCCAGAGACAAGGCCCTCCTCCGCATTCCGGAGAACCGACCCCCAGGCACCTTCCACCA  
GTTCCGCCTGCTGCCTGTGCAGTTCTTGTGCCCAACATCAGCGTGGCCTACAGGCTCCTGGAGGGTGG  
GGTCTGCCCTTCCGCTGCGCCCCGGACAGCCTGGAGGTGAGCACGCGCTGGGCCCTGGACCGCAGCAGC  
GGGAGAAGTACGAGCTGGTGGCCGTGTGACCCGTGCACGCCGCGCGCGGAGGAGTGGTGATGGTGCC  
CTTCCCGGTGACCGTGTACGACGAGGACGACTCGGCCCCACCTTCCCGCGGGCGTGCACACGCCCAGC  
GCCGTGGTGGAGTTCAAGCGGAAGGAGGACACCGTGGTGGCCACGCTGCTCCCGGGGACACCTGGGCCAGCA  
TACCTGGATCAGGGGAGCTGGTGGCCGATACACAAGCAGCCTGCTCCCGGGGACACCTGGGCCAGCA  
GACCTTCCGGGTGGAACACTGGCCCAACGAGACCTCGGTCCAGGCCAACGGCAGCTTCGTGCGGGCGACC  
GTACATGACTATAGGCTGGTTCTCAACCGGAACCTCTCCATCTCGGAGAACCGCACCATGACAGCTGGCGG  
TGCTGGTCAATGACTCAGACTTCCAGGGCCAGGAGCGGGCGTCTCTTGTCTCACTTCAACGTGTCCGT  
GCTGCCGGTACGCTGCACCTGCCAGTACCTACTCCCTCTCCGTGAGCAGGAGGGCTCGCCGATTTGCC  
CAGATCGGAAAGTCTGTGTGAAAAGTCCAGGCATTAGTGGCATCAACGTCCAGTACAAGCTGCATT  
CCTCTGGTGCCAACTGCAGCAGCTAGGGTGGTACCTCAGCCGAGGACACCTCGGGATCCTGTTTGT  
GAATGACACCAAGGCCCTGCGGGGCCCAAGTGTGCCAACTTACTACATGGTGGTGGCCACCGACCAG  
CAGACCTTAGGCAGGCCAGGCCAGCTGCTTGAACAGTGGAGGGTCAATATGTGGCCGAGGAGCGCG  
GCTGCCCCCTGTCTGTGAGTACGCAAGAGACGGCTGGAGTGTGAGGAGTGTGGCGGCCTGGGCTCCCC  
AACAGGCAGGTGTGAGTGGAGGCAAGGAGATGGCAAAGGGATCACAGGAACTTCTCACCTGCTCTCCC  
AGCACCAAGACCTGCCCGACGGCCACTGCGATGTTGTGGAGACCAAGACATCAACATTTGCCCTCAGG  
ACTGCCTCCGGGGCAGCATTGTTGGGGACACGAGCCTGGGGAGCCCCGGGGATTAAAGCTGGCTATGG  
CACCTGCAACTGCTTCCCTGAGGAGGAGAAGTCTTCTGCGAGCCGAAGACATCCAGGATCCACTGTGC  
GACGAGCTGTGCCGACGGTGTGCGAGCCGTGCTCTTCTCTTTCATCGTCTCGGTGCTGCTGTCTG  
CCTTCTGCATCCACTGCTACCACAAGTTTCCCAAGCCACCCATCTCCTCAGCTGAGATGACCTTCCG  
GAGGCCCGCCAGGCCCTCCCGGTGAGTACTCTCTCCGGTCCCGCCCGCCCTCGTGGATCCATG  
GAGAACCAGGTCTCCGTGGATGCTTCAAGATCCTGGAGGATCCAAAGTGGGAATTCCTCGGAAGAACT  
TGGTTCTTGGAAAAGCTTAGGAGAAGGCAATTTGAAAAGTGGTCAAGGCAACGGCCTTCCATCTGAA  
AGGCAGAGCAGGGTACACCACGGTGGCCGTGAAGATGCTGAAAGAGAACGCCCTCCCCGAGTGAGTTCGA  
GACCTGCTGTGAGTTCACAGTCTGAAGCAGGTCAACCACCCACATGTGATCAAAATGATGGGGCT  
GCAGCCAGGATGGCCCGCTCCTCCTCATCGTGGAGTACGCCAAATACGGCTCCCTGCGGGGCTTCTCCG  
CGAGAGCCGAAAAGTGGGGCTGGCTACCTGGGAGTGGAGGCAGCCGCAACTCCAGCTCCCTGGACCAC  
CCGGATGAGCGGGCCCTCACATGGGCGACCTCATCTCATTTCCTGGCAGATCTCACAGGGATGCAGT  
ATCTGGCCGAGATGAAGCTCGTTCATCGGGACTTGGCAGCCAGAAACATCCTGGTAGCTGAGGGCGGAA  
GATGAAGATTTCCGATTTCCGGCTTGTCCCGAGATGTTTATGAAGAGGATTCCTACGTGAAGAGGACCCAG  
GGTCGGATTCAGTAAATGGATGGCAATTAATCCCTTTTGTATCATATCTACACCACGCAAAGTGATG  
TATGGTCTTTGGTGTCTGCTGTGGGAGATCGTGACCCTAGGGGGAAACCCCTATCCTGGGATTCCTCC  
TGAGCGGCTCTTCAACCTTCTGAAGACCGGCCACCGGATGGAGAGGCCAGACAACTGCAGCGAGGAGATG  
TACCGCCTGATGCTGCAATGCTGGAAGCAGGAGCCGGACAAAAGGCCGGTGTGCGGACATCAGCAAAG  
ACCTGGAGAAGATGATGGTTAAGAGGAGAGACTACTTGGACCTTGGCGGTCCACTCCATCTGACTCCCT  
GATTTATGACGACGGCCTCTCAGAGGAGGAGACACCGCTGGTGGACTGTAATAATGCCCCCTCCCTCGA  
GCCCTCCCTTCCACATGGATTGAAAACAACTCTATGGCATGTCAGACCCGAACCTGGCCGGAGAGATG  
CTGTACCACTCAGAGAGCTGATGGCACTAACACTGGGTTTCCAAGATATCCAATGATAGTGTATATGC  
TAACTGGATGCTTTCACCTCAGCGGCAAAATTAATGGACACGTTTGATAGT

AGCGGACCGACGCGTACGCGGCCGCTCGAGCAGAACTCATCTCAGAAGAGGATCTGGCAGCAAATGATATCC  
TGGATTACAAGGATGACGACGA TAAGGTTTAA

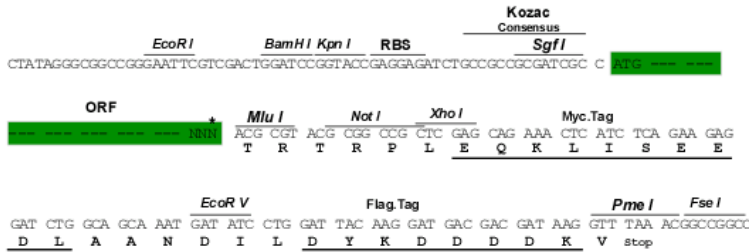
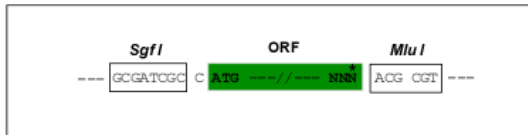
**Protein Sequence:** >RC403320 representing NM\_020975  
Red=Cloning site Green=Tags(s)

MAKATSGAAGRLRLRLPLLGKVALGLYFSRDAYWEKLYVDQAAGTPLLYVHALRDAPEEVPSFRLGQ  
 HLYGTYRTRLHENNWICIQEDTGLLYLNRLSDHSSWEKLSVRNRGFPLLVYLVKVFVLSPTSLREGECQWP  
 GCARVYF SFFNTSFPACSSLKPRLCFPETRPSFRIRENRPPGTFHQFRLLPVQFLCPNISVAYRLLGE  
 GLPFRCAPDSLEVSTRWALDREQREKLYELVAVCTVHAGAREEVMVPPVTVYDEDDSPATFFPAGVDTAS  
 AVVEFKRKEDTVVATLRVFDADVVPASGELVRRYVSTLLPGDTWAQQTFRVEHWPNETSVQANGSFVRAT  
 VHDYRVLNLRNLSISENRTMQLAVLVNDSDFQGPAGVLLLHFNVSVLVSVLHLPSTYSLSVSRARRFA  
 QIGKVCVENCQAFSGINVQYKLHSSGANCSTLGVVTS AEDTSGILFVNDTKALRRPKCAELHYMVVATDQ  
 QTSRQAQAQLLVTVEGSYVAEEAGCPLSCAVSKRRLECEECEGLGSPTRCEWRQGDGKGITRNFSTCSP  
 STKTCPDGHCDVETQDINICPQDCLRGSIVGGHEPGEPRGIKAGYGTNCNFPEEEKCFCEPEDIQDPLC  
 DELCRTVIAAAVLF SFIVSVLLSAFCIHCYHKFAHKPPISSAEMTFRRPAQAFVSYSSSGARRPSLDSM  
 ENQVSVDAFKILEDPKWEFPRKNLVLGKALGEGEFGKVVKATAFHLKGRAGYTTVAVKMLKENASPSLR  
 DLLSEFNVLKQVNHVVIKLYGACSDQGPLLLIVEYAKYGSLRGLRESRKGVPGYLGS GSRNSSSLDH  
 PDERALTMGDLSFAWQISQGMQYLAEMKLVHRDLAARNILVAEGRKMKISDFGLSRDVEEDSYVKRSQ  
 GRIPVKWMAIESLFDHIYTTQSDVWVSGVLLWEIVTLGGNYPGIPPERLFNLLKTGHRMERNPCSEEM  
 YRLMLQCWKQEPDKRPVFADISKDLEKMMVKRRDYLDLAASTPSDSL IYDDGLSEEETPLVDCNNAPLPR  
 ALPSTWIENKLYGMSDPNWPGESPVPLTRADGTNTGFPRYPNDSVYANWMLSPSAAKLMDFDS

SGPTRTRRLEQKLISEEDLAANDILDYKDDDDKV

**Restriction Sites:** SgfI-MluI  
**Cloning Scheme:**

Cloning sites used for ORF Shutting:



\* The last codon before the Stop codon of the ORF

**OTI Disclaimer:** The molecular sequence of this clone aligns with the gene accession number as a point of reference only. However, individual transcript sequences of the same gene can differ through naturally occurring variations (e.g. polymorphisms), each with its own valid existence. This clone is substantially in agreement with the reference, but a complete review of all prevailing variants is recommended prior to use. [More info](#)

**OTI Annotation:** This clone was engineered to express the complete ORF with an expression tag. Expression varies depending on the nature of the gene.

<b>Components:</b>	The ORF clone is ion-exchange column purified and shipped in a 2D barcoded Matrix tube containing 10ug of transfection-ready, dried plasmid DNA (reconstitute with 100 ul of water).
<b>RefSeq:</b>	<a href="#">NP_066124</a>
<b>RefSeq Size:</b>	3342 bp
<b>RefSeq ORF:</b>	3345 bp
<b>Locus ID:</b>	5979
<b>Cytogenetics:</b>	10q11.21
<b>Protein Families:</b>	Druggable Genome, Protein Kinase, Transmembrane
<b>Protein Pathways:</b>	Endocytosis, Pathways in cancer, Thyroid cancer
<b>MW:</b>	122.5 kDa
<b>Gene Summary:</b>	This gene encodes a transmembrane receptor and member of the tyrosine protein kinase family of proteins. Binding of ligands such as GDNF (glial cell-line derived neurotrophic factor) and other related proteins to the encoded receptor stimulates receptor dimerization and activation of downstream signaling pathways that play a role in cell differentiation, growth, migration and survival. The encoded receptor is important in development of the nervous system, and the development of organs and tissues derived from the neural crest. This proto-oncogene can undergo oncogenic activation through both cytogenetic rearrangement and activating point mutations. Mutations in this gene are associated with Hirschsprung disease and central hypoventilation syndrome and have been identified in patients with renal agenesis. [provided by RefSeq, Sep 2017]