

## Product datasheet for **RC403295**

### RET (NM\_020975) Human Mutant ORF Clone

#### Product data:

Product Type:	Mutant ORF Clones
Product Name:	RET (NM_020975) Human Mutant ORF Clone
Mutation Description:	C618F
Affected Codon#:	618
Affected NT#:	1853
Nucleotide Mutation:	RET Mutant (C618F), Myc-DDK-tagged ORF clone of Homo sapiens ret proto-oncogene (RET), transcript variant 2 as transfection-ready DNA
Effect:	Multiple endocrine neoplasia 2A
Symbol:	RET
Synonyms:	CDHF12; CDHR16; HSCR1; MEN2A; MEN2B; MTC1; PTC; RET-ELE1
E. coli Selection:	Kanamycin (25 ug/mL)
Mammalian Cell Selection:	Neomycin
Vector:	pCMV6-Entry (PS100001)
Tag:	Myc-DDK
ACCN:	NM_020975
ORF Size:	3342 bp
Restriction Sites:	SgfI-MluI
ORF Nucleotide Sequence:	>RC403295 representing NM_020975 Red=Cloning site Blue=ORF Green=Tags(s)

TTTTGTAATACGACTCACTATAGGGCGGCCGGGAATTCGTCGACTGGATCCGGTACCGAGGAGATCTGCC  
GCC**GCGATCGCC**

ATGGCGAAGGCGACGTCCGGTGCCGCGGGCTGCGTCTGCTGTTGCTGCTGCTGCCGCTGCTAGGCA  
AAGTGGCATTGGGCTCTACTTCTCGAGGGATGCTTACTGGGAGAAGCTGTATGTGGACCAGGCGGCCGG  
CACGCCCTTGCTGTACGTCCATGCCCTGCGGGACGCCCTGAGGAGGTGCCAGCTTCCGCTGGCCAG  
CATCTCTACGGCACGTACCGCACACGGCTGCATGAGAACAACCTGGATCTGCATCCAGGAGGACACCGGCC  
TCCTCTACCTTAACCGGAGCCTGGACCATAGCTCCTGGGAGAAGCTCAGTGTCCGCAACCGCGGCTTTCC  
CCTGCTACCGTCTACCTCAAGGTCTTCTGTACCCACATCCCTTCGTGAGGGCGAGTGCCAGTGGCCA  
GGCTGTGCCCGGTATACTTCTCCTTCTCAACACCTCCTTTCCAGCCTGCAGCTCCCTCAAGCCCCGGG



[View online »](#)

AGCTCTGCTTCCCAGAGACAAGGCCCTCCTCCGCATTGGGAGAACCGACCCCCAGGCACCTTCCACCA  
GTTCCGCCTGCTGCCTGTGCAGTTCTTGTGCCCAACATCAGCGTGGCCTACAGGCTCCTGGAGGGTGAG  
GGTCTGCCCTTCCGCTGCGCCCCGGACAGCCTGGAGGTGAGCACGCGCTGGGCCCTGGACCGGAGCAGC  
GGGAGAAGTACGAGCTGGTGGCCGTGTGACCCGTGCACGCCGCGCGCGGAGGAGTGGTGATGGTGCC  
CTTCCCGGTGACCGTGTACGACGAGGACGACTCGGCGCCACCTTCCCGCGGGCGTGCACACCGCCAGC  
GCCGTGGTGGAGTTCAAGCGGAAGGAGGACACCGTGGTGGCCACGCTGCTCCCGGGGACACCTGGGCCAGCA  
TACCTGGATCAGGGGAGCTGGTGGCCGTTACACAAGCAGCCTGCTCCCGGGGACACCTGGGCCAGCA  
GACCTTCCGGGTGGAACACTGGCCCAACGAGACCTCGGTCCAGGCCAACGGCAGCTTCGTGCGGGCGACC  
GTACATGACTATAGGCTGGTTCTCAACCGGAACCTCTCCATCTCGGAGAACCGCACCATGACAGCTGGCGG  
TGCTGGTCAATGACTCAGACTTCCAGGGCCAGGAGCGGGCGTCTCTTGTCCACTTCAACGTGTCCGT  
GCTGCCGGTACGCTGCACCTGCCAGTACCTACTCCCTCTCCGTGAGCAGGAGGGCTCGCCGATTTGCC  
CAGATCGGAAAGTCTGTGTGAAAAGTCCAGGCATTAGTGGCATCAACGTCCAGTACAAGCTGCATT  
CCTCTGGTGCCAACTGCAGCACGCTAGGGTGGTACCTCAGCCGAGGACACCTCGGGATCCTGTTTGT  
GAATGACACCAAGGCCCTGCGGCGGCCAAGTGTGCCAACTTACTACATGGTGGTGGCCACCGACCAG  
CAGACCTTAGGCAGGCCAGGCCAGCTGCTTGAACAGTGGAGGGTTCATATGTGGCCGAGGAGCGG  
GCTGCCCCCTGCTCTGTGAGTACGCAAGAGACGGCTGGAGTGTGAGGAGTGTGGCGGCCTGGGCTCCCC  
AACAGGACGGTGTGAGTGGAGGCAAGGAGATGGCAAAGGGATCACAGGAACTTCTCACCTGCTCTCCC  
AGCACCAAGACCTGCCCGACGGCCACTGCGATGTTGTGGAGACCAAGACATCAACATTTGCCCTCAGG  
ACTGCCTCCGGGCGACATTGTTGGGGACACGAGCCTGGGGAGCCCCGGGGATTAAAGCTGGCTATGG  
CACCTGCAACTGCTTCCCTGAGGAGGAGAAGTCTTCTGCGAGCCGAAGACATCCAGGATCCACTGTGC  
GACGAGCTGTGCCGACGGTGTGCGAGCCGTGCTCTTCTCCTTATCGTCTCGGTGCTGCTGTCTG  
CCTTCTGCATCCACTGCTACCACAAGTTTCCCAAGCCACCCATCTCCTCAGCTGAGATGACCTTCCG  
GAGGCCCGCCAGGCCCTCCCGGTGAGTACTCTCTCCGGTCCCGCCCGCCCTCGTGAGTCCATG  
GAGAACCAGGTCTCCGTGGATGCCTTCAAGATCCTGGAGGATCCAAAGTGGGAATTCCTCGGAAGAACT  
TGGTTCTTGGAAAAGTCTAGGAGAAGGCAATTTGAAAAGTGGTCAAGGCAACGGCCTTCCATCTGAA  
AGGAGAGCAGGGTACACCACGGTGGCCGTGAAGATGCTGAAAGAGAACGCCTCCCCGAGTGAGTTCGA  
GACCTGCTGTGAGTTCACAGTCTGAAGCAGGTCAACCACCCACATGTATCAAAATGATGGGGCT  
GCAGCCAGGATGGCCCGCTCCTCCTCATCGTGGAGTACGCCAAATACGGCTCCCTGCGGGGCTTCTCCG  
CGAGAGCCGAAAAGTGGGGCTGGCTACCTGGGAGTGGAGGCAGCCGCAACTCCAGCTCCCTGGACCAC  
CCGGATGAGCGGGCCCTCACCATGGGCGACCTCATCTCATTGCTGGCAGATCTCACAGGGATGCAGT  
ATCTGGCCGAGATGAAGCTCGTTCATCGGGACTTGGCAGCCAGAAACATCCTGGTAGCTGAGGGCGGAA  
GATGAAGATTTCCGATTTCCGGCTGTCCCGAGATGTTTATGAAGAGGATTCCTACGTGAAGAGGACCCAG  
GGTCGGATTCAGTAAATGGATGGCAATTGAATCCCTTTTTGATCATATCTACACCACGAAAAGTGATG  
TATGGTCTTTGGTGTCTGCTGTGGGAGATCGTGACCCTAGGGGGAAACCCCTATCCTGGGATTCCTCC  
TGAGCGGCTCTTCAACCTTCTGAAGACCGGCCACCGGATGGAGAGGCCAGACAACTGCAGCGAGGAGATG  
TACCGCTGATGCTGCAATGCTGGAAGCAGGAGCCGACAAAAGGCCGGTGTGCGGACATCAGCAAAG  
ACCTGGAGAAGATGATGGTTAAGAGGAGAGACTACTTGGACCTTGGCGGTCCACTCCATCTGACTCCCT  
GATTTATGACGACGGCCTCTCAGAGGAGGAGACACCGCTGGTGGACTGTAAATGCCCCCTCCCTCGA  
GCCCTCCCTTCCACATGGATTGAAAACAACTCTATGGCATGTCAGACCCGAACCTGGCCGGAGAGATG  
CTGTACCACTCAGAGAGCTGATGGCACTAACACTGGGTTTCCAAGATATCCAATGATAGTGTATATGC  
TAACTGGATGCTTTCACCTCAGCGGCAAAATTAATGGACACGTTTGATAGT

AGCGGACCGACGCGTACGCGCCGCTCGAGCAGAACTCATCTCAGAAGAGGATCTGGCAGCAAATGATATCC  
TGGATTACAAGGATGACGACGA TAAGGTTTAA

**Protein Sequence:** >RC403295 representing NM\_020975  
 Red=Cloning site Green=Tags(s)

```

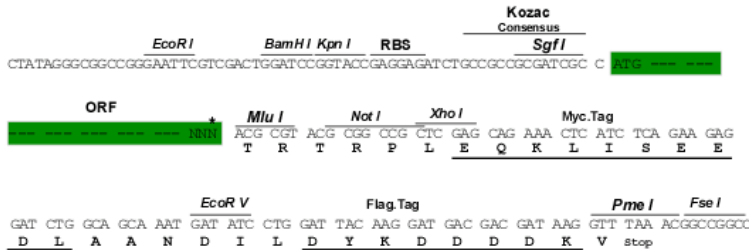
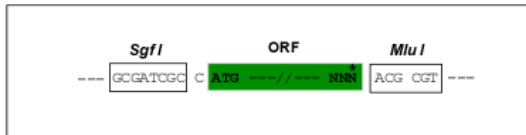
MAKATSGAAGRLLLLLLLPLLKGVALGLYFSRDAYWEKLYVDQAAGTPLLYVHALRDAPEEVPSFRLGQ
HLYGTYRTRLHENNWICIQEDTGLLYLNRSLDHSSWEKLSVRNRGFPLLTVYLVKVFSLPTSLREGECQWP
GCARVYFSFFNTSFPACSSLKPRELFCPETRPSFRIENRPPGTFHQFRLLPVQFLCPNISVAYRLLGE
GLPFRCAPDSLEVSTRWALDREQREKVELVAVCTVHAGAREEVVMVPPVTVYDEDDSAFTFPAGVDTAS
AVVEFKRKEDTVVATLRVFDADVPASGELVRRYTSTLLPGDTWAQQTFRVEHWPNETSVQANGSFVRAT
VHDYRLVLNRNLSISENRTMQLAVLVNDSDFQGGAGVLLLFHNVSVLPVSLHLPSTYSLSVSRARRFA
QIGKVCVENCQAFSGINVQYKLHSSGANCSTLGVVTSAEDTSGILFVNDTKALRRPKCAELHYMVVATDQ
QTSRQAQAQLLVTVEGSYVAEEAGCPLSCAVSKRRLECEECGGLGSPTRCEWRQGDGKGITRNFSTCSP
STKTCPDGHCDVETQDINICPQDCLRGSIVGGHEPGEPRGIKAGYGTCCNCFPEEEKFFCEPEDIQDPLC
DEL CRTVIAAAVLF SFI VSVLLSAFCIHCHYKFAHKPPISSAEMTFRRPAQAFVSYSSSGARRPSLDSM
ENQVSVDAFKILEDPKWEFPRKNLVLGKTLGEGEFGKVVKATAFHLLKGRAGYTTVAVKMLKENASPSLR
DLLSEFNVLKQVNHPHVIKLYGACSQDGPLLLIVEYAKYGSRLRGLRESRQVGPVGLGSGGSRNSSLDH
PDERALTMGDLISFAWQISQGMQYLAEMKLVHRDLAARNILVAEGRMKISDFGLSRDVEEDSYVKRSQ
GRIPVKWMAIESLFDHIYTTQSDVWVSGVLLWEIVTLGGNPYPGIPPERLFNLLKTGHRMERPDCSEEM
YRLMLQCWKQEPDKRPVFADISKDLEKMMVKRRDYLDAASTPSDSL IYDDGLSEEETPLVDCNNAPLPR
ALPSTWIENKLYGMSDPNWPGESPVPLTRADGTNTGFPYPNDVSYANWMLSPSAAKLMDTFDS
  
```

SGPTRRRLEQKLI SEEDLAANDILDYKDDDDKV

**Restriction Sites:** SgfI-MluI

**Cloning Scheme:**

Cloning sites used for ORF Shutting:



\* The last codon before the Stop codon of the ORF

**OTI Disclaimer:** The molecular sequence of this clone aligns with the gene accession number as a point of reference only. However, individual transcript sequences of the same gene can differ through naturally occurring variations (e.g. polymorphisms), each with its own valid existence. This clone is substantially in agreement with the reference, but a complete review of all prevailing variants is recommended prior to use. [More info](#)

**OTI Annotation:** This clone was engineered to express the complete ORF with an expression tag. Expression varies depending on the nature of the gene.

<b>Components:</b>	The ORF clone is ion-exchange column purified and shipped in a 2D barcoded Matrix tube containing 10ug of transfection-ready, dried plasmid DNA (reconstitute with 100 ul of water).
<b>RefSeq:</b>	<a href="#">NP_066124</a>
<b>RefSeq Size:</b>	3342 bp
<b>RefSeq ORF:</b>	3345 bp
<b>Locus ID:</b>	5979
<b>Cytogenetics:</b>	10q11.21
<b>Protein Families:</b>	Druggable Genome, Protein Kinase, Transmembrane
<b>Protein Pathways:</b>	Endocytosis, Pathways in cancer, Thyroid cancer
<b>MW:</b>	122.5 kDa
<b>Gene Summary:</b>	This gene encodes a transmembrane receptor and member of the tyrosine protein kinase family of proteins. Binding of ligands such as GDNF (glial cell-line derived neurotrophic factor) and other related proteins to the encoded receptor stimulates receptor dimerization and activation of downstream signaling pathways that play a role in cell differentiation, growth, migration and survival. The encoded receptor is important in development of the nervous system, and the development of organs and tissues derived from the neural crest. This proto-oncogene can undergo oncogenic activation through both cytogenetic rearrangement and activating point mutations. Mutations in this gene are associated with Hirschsprung disease and central hypoventilation syndrome and have been identified in patients with renal agenesis. [provided by RefSeq, Sep 2017]