

## Product datasheet for **RC403281**

### RET (NM\_020975) Human Mutant ORF Clone

#### Product data:

Product Type:	Mutant ORF Clones
Product Name:	RET (NM_020975) Human Mutant ORF Clone
Mutation Description:	C609S
Affected Codon#:	609
Affected NT#:	1826
Nucleotide Mutation:	RET Mutant (C609S), Myc-DDK-tagged ORF clone of Homo sapiens ret proto-oncogene (RET), transcript variant 2 as transfection-ready DNA
Effect:	Thyroid cancer
Symbol:	RET
Synonyms:	CDHF12; CDHR16; HSCR1; MEN2A; MEN2B; MTC1; PTC; RET-ELE1
E. coli Selection:	Kanamycin (25 ug/mL)
Mammalian Cell Selection:	Neomycin
Vector:	pCMV6-Entry (PS100001)
Tag:	Myc-DDK
ACCN:	NM_020975
ORF Size:	3342 bp
Restriction Sites:	SgfI-MluI
ORF Nucleotide Sequence:	>RC403281 representing NM_020975 Red=Cloning site Blue=ORF Green=Tags(s)

TTTTGTAATACGACTCACTATAGGGCGGCCGGGAATTCGTCGACTGGATCCGGTACCGAGGAGATCTGCC  
GCC**CGATCGCC**

ATGGCGAAGGCGACGTCCGGTGCCGCGGGGCTGCGTCTGCTGTTGCTGCTGCTGCCGCTGCTAGGCA  
AAGTGGCATTGGGCTCTACTTCTCGAGGGATGCTTACTGGGAGAAGCTGTATGTGGACCAGGCGGCCGG  
CACGCCCTTGCTGTACGTCCATGCCCTGCGGGACGCCCTGAGGAGGTGCCAGCTTCCGCTGGCCAG  
CATCTCTACGGCACGTACCGCACACGGCTGCATGAGAACAACCTGGATCTGCATCCAGGAGGACACCGGCC  
TCCTCTACCTTAACCGGAGCCTGGACCATAGCTCCTGGGAGAAGCTCAGTGTCCGCAACCGCGGCTTTCC  
CCTGCTACCGTCTACCTCAAGGTCTTCTGTACCCACATCCCTTCGTGAGGGCGAGTGCCAGTGGCCA  
GGCTGTGCCCGGTATACTTCTCCTTCTCAACACCTCCTTTCCAGCCTGCAGCTCCCTCAAGCCCCGGG



[View online »](#)

AGCTCTGCTTCCCAGAGACAAGGCCCTCCTCCGCATTCCGGAGAACCGACCCCCAGGCACCTTCCACCA  
GTTCCGCCTGCTGCCTGTGCAGTTCTTGTGCCCAACATCAGCGTGGCCTACAGGCTCCTGGAGGGT  
GGTCTGCCCTTCCGCTGCGCCCCGGACAGCCTGGAGGTGAGCACGCGCTGGGCCCTGGACCGCAGCAGC  
GGGAGAAGTACGAGCTGGTGGCCGTGTGACCCGTGCACGCCGCGCGCGGAGGAGTGGTATGGTGCC  
CTTCCCGGTGACCGTGTACGACGAGGACGACTCGGCCCCACCTTCCCGCGGGCGTGCACACCGCCAGC  
GCCGTGGTGGAGTTCAAGCGGAAGGAGGACACCGTGGTGGCCACGCTGCTCCCGGGGACACCTGGGCCAGCA  
TACCTGCATCAGGGGAGCTGGTGGCCGTTACACAAGCAGCCTGCTCCCGGGGACACCTGGGCCAGCA  
GACCTTCCGGGTGGAACACTGGCCCAACGAGACCTCGGTCCAGGCCAACGGCAGCTTCGTGCGGGCGACC  
GTACATGACTATAGGCTGGTTCTCAACCGGAACCTCTCCATCTCGGAGAACCGCACCATGACAGCTGGCGG  
TGCTGGTCAATGACTCAGACTTCCAGGGCCAGGAGCGGGCGTCTCTTGTCTCACTTCAACGTGTCCGT  
GCTGCCGGTACGCTGCACCTGCCAGTACCTACTCCCTCTCCGTGAGCAGGAGGGCTCGCCGATTTGCC  
CAGATCGGAAAGTCTGTGTGAAAACCTGCCAGGCATTAGTGGCATCAACGTCCAGTACAAGCTGCATT  
CCTCTGGTGCCAACTGCAGCACGCTAGGGTGGTACCTCAGCCGAGGACACCTCGGGATCCTGTTTGT  
GAATGACACCAAGGCCCTGCGGGGCCAAAGTGTGCCAACTTACTACATGGTGGTGGCCACCGACCAG  
CAGACCTTAGGCAGGCCAGGCCAGCTGCTTGAACAGTGGAGGGTTCATATGTGGCCGAGGAGCGCG  
GCTGCCCCCTGTCTGTGAGTACGCAAGAGACGGCTGGAGTGTGAGGAGTGTGGCGGCCTGGGCTCCCC  
AACAGGCAGGTGTGAGTGGAGGCAAGGAGATGGCAAAGGGATCACAGGAACTTCTCACCTGCTCTCCC  
AGCACCAAGACCTGCCCGACGGCCACTGCGATGTTGTGGAGACCCAAGACATCAACATTTGCCCTCAGG  
ACTGCCTCCGGGCGACATTGTTGGGGACACGAGCCTGGGGAGCCCCGGGGATTAAAGCTGGCTATGG  
CACCTCCAACCTGCTTCCCTGAGGAGGAGAAGTCTTCTGCGAGCCGAAGACATCCAGGATCCACTGTGC  
GACGAGCTGTGCCGACGGTGTGCGAGCCGCTGCTCTTCTCTTTCATCGTCTCGGTGCTGCTGTCTG  
CCTTCTGCATCCACTGCTACCACAAGTTTCCCCACAAGCCACCCATCTCCTCAGCTGAGATGACCTCCG  
GAGGCCCGCCAGGCCCTCCCGGTGAGTACTCTCTCCGGTCCCGCCCGCCCTCGTGAGTCCATG  
GAGAACCAGGTCTCCGTGGATGCCTTCAAGATCCTGGAGGATCCAAAGTGGGAATTCCTCGGAAGAACT  
TGGTTCTTGAAAAAAGTCTAGGAGAAGGCAATTTGAAAAAGTGGTCAAGGCAACGGCCTTCCATCTGAA  
AGGCAGAGCAGGGTACACCACGGTGGCCGTGAAGATGCTGAAAGAGAACGCCTCCCCGAGTGAAGTTCGA  
GACCTGCTGTGAGTTCACAGTCTGAAGCAGGTCAACCACCCACATGTATCAAAATGATGGGGCT  
GCAGCCAGGATGGCCCGCTCCTCCTCATCGTGGAGTACGCCAAATACGGCTCCCTGCGGGGCTTCTCCG  
CGAGAGCCGAAAGTGGGGCTGGCTACCTGGGAGTGGAGGCAGCCGCAACTCCAGCTCCCTGGACCAC  
CCGGATGAGCGGGCCCTCACCATGGGCGACCTCATCTCATTGCTGGCAGATCTCACAGGGATGCAGT  
ATCTGGCCGAGATGAAGCTCGTTCATCGGGACTTGGCAGCCAGAAACATCCTGGTGTGAGGGGCGGAA  
GATGAAGATTTCCGATTTCCGGCTGTCCCGAGATGTTTATGAAGAGGATTCCTACGTGAAGAGGACCCAG  
GGTCGGATTCAGTAAATGGATGGCAATTGAATCCCTTTTTGATCATATCTACACCACGCAAAGTATG  
TATGGTCTTTGGTGTCTGCTGTGGGAGATCGTGACCCTAGGGGGAAACCCCTATCCTGGGATTCCTCC  
TGAGCGGCTCTTCAACCTTCTGAAGACCGGCCACCGGATGGAGAGGCCAGACAACTGCAGCGAGGAGATG  
TACCGCTGATGCTGCAATGCTGGAAGCAGGAGCCGGACAAAAGGCCGGTGTGCGGACATCAGCAAAG  
ACCTGGAGAAGATGATGGTTAAGAGGAGAGACTACTTGGACCTTGGCGGTCCACTCCATCTGACTCCCT  
GATTTATGACGACGGCCTCTCAGAGGAGGAGACACCGCTGGTGGACTGTAAATGCCCCCTCCCTCGA  
GCCCTCCCTTCCACATGGATTGAAAACAACTCTATGGCATGTCAGACCCGAACCTGGCCGGAGAGATG  
CTGTACCACTCAGAGAGCTGATGGCACTAACACTGGGTTTCCAAGATATCCAATGATAGTGTATATGC  
TAACTGGATGCTTTCACCTCAGCGGCAAAATTAATGGACACGTTTGTATAGT

AGCGGACCGACGCGTACGCGGCCGCTCGAGCAGAACTCATCTCAGAAGAGGATCTGGCAGCAAATGATATCC  
TGGATTACAAGGATGACGACGA TAAGGTTTAA

Protein Sequence: >RC403281 representing NM\_020975  
 Red=Cloning site Green=Tags(s)

MAKATSGAAGLRLLLLLLLPLLGKVALGLYFSRDAYWEKLYVDQAAGTPLLYVHALRDAPEEVPFRLGQ  
 HLYGTYRTRLHENNWICIQEDTGLLYLNRSLDHSSWEKLSVRNRGFPLLTYYLKVFLSPTSLREGECQWP  
 GCARVYFSFFNTSFPACSSLKPRELCFPETRPFRIFRENRRPGTFHQFRLLPVQFLCPNISVAYRLLGE  
 GLPFRCAPDSLEVSTRWALDREQREKVELVAVCTVHAGAREEVMMVFPVTVYDEDDSAFTFPAGVDTAS  
 AVVEFKRKEDTVVATLRFVDADVVPASGELVRRYVSTLLPGDTWAQQTFRVEHWPNETSQANGSFVRAT  
 VHDYRLLVLRNLSISENRTMQLAVLVNDSDFQGGAGVLLLHFNVSVLVPSLHLPSTYSLSVSRARRFA  
 QIGKVCVENCQAFSGINVQYKLHSSGANCSTLGVVTSAEDTSGILFVNDTKALRRPKCAELHYMVVATDQ  
 QTSRQAQAQLLVTEGSYVAEEAGCPLSCAVSKRRLECEECGGLGSPTRCEWRQGDGKGITRNFSTCSP  
 STKTCPDGHCDVVETQDINICPDCLRGSIVGGHEPGEPRGIKAGYGTSCNCFPEEEKCFCEPEDIQDPLC  
 DELCRTVIAAAVLFSEIVSVLLSAFCIHCHYHFAHKPPISSAEMTFRRPAQAFVSYSSSGARRPSLDMS  
 ENQVSDAFKILEDPKWEFPRKNLVLGKTLGEGEFGKVVKATAFHLKGRAGYTTVAVKMLKENASPSLR  
 DLLSEFNVLKQVNHPHVIKLYGACSQDGPLLLIVEYAKYGSRLRFLRESRQVGPVYLSGGSRNSSSLDH  
 PDERALTMGDLISFAWQISQGMQYLAEMKLVHRDLAARNILVAEGRMKISDFGLSRDVEEDSVYKRSQ  
 GRIPVKWMAIESLFDHIYTTQSDVWSFGVLLWEIVTLGPNYPGIPPERLFNLLKTGHRMERPDNCSEEM  
 YRLMLQCWKQEPDKRPVFADISKDLEKMMVKRRDYDLAASTPSDSLIDYDDGLSEEETPLVDCNNAPLR  
 ALPSTWIENKLYGMSDPNWPGESPVPLTRADGTNTGFPYRPNDSVYANWMLSPSAAKLMDTFDS

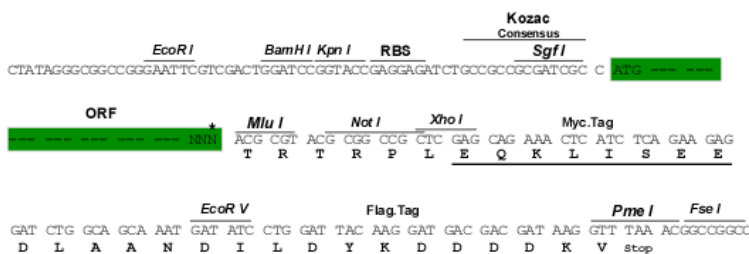
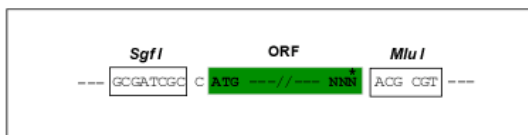
SGPTRRRLEQKLISEEDLAANDILDYKDDDDKV

Restriction Sites:

Sgfi-MluI

Cloning Scheme:

Cloning sites used for ORF Shutting:



\* The last codon before the Stop codon of the ORF

OTI Disclaimer:

The molecular sequence of this clone aligns with the gene accession number as a point of reference only. However, individual transcript sequences of the same gene can differ through naturally occurring variations (e.g. polymorphisms), each with its own valid existence. This clone is substantially in agreement with the reference, but a complete review of all prevailing variants is recommended prior to use. [More info](#)

OTI Annotation:

This clone was engineered to express the complete ORF with an expression tag. Expression varies depending on the nature of the gene.

<b>Components:</b>	The ORF clone is ion-exchange column purified and shipped in a 2D barcoded Matrix tube containing 10ug of transfection-ready, dried plasmid DNA (reconstitute with 100 ul of water).
<b>RefSeq:</b>	<a href="#">NP_066124</a>
<b>RefSeq Size:</b>	3342 bp
<b>RefSeq ORF:</b>	3345 bp
<b>Locus ID:</b>	5979
<b>Cytogenetics:</b>	10q11.21
<b>Protein Families:</b>	Druggable Genome, Protein Kinase, Transmembrane
<b>Protein Pathways:</b>	Endocytosis, Pathways in cancer, Thyroid cancer
<b>MW:</b>	122.5 kDa
<b>Gene Summary:</b>	This gene encodes a transmembrane receptor and member of the tyrosine protein kinase family of proteins. Binding of ligands such as GDNF (glial cell-line derived neurotrophic factor) and other related proteins to the encoded receptor stimulates receptor dimerization and activation of downstream signaling pathways that play a role in cell differentiation, growth, migration and survival. The encoded receptor is important in development of the nervous system, and the development of organs and tissues derived from the neural crest. This proto-oncogene can undergo oncogenic activation through both cytogenetic rearrangement and activating point mutations. Mutations in this gene are associated with Hirschsprung disease and central hypoventilation syndrome and have been identified in patients with renal agenesis. [provided by RefSeq, Sep 2017]