

Product datasheet for **RC403172**

BRCA1 (NM_007294) Human Mutant ORF Clone

Product data:

Product Type:	Mutant ORF Clones
Product Name:	BRCA1 (NM_007294) Human Mutant ORF Clone
Mutation Description:	Q1785X
Affected Codon#:	1785
Affected NT#:	5353
Nucleotide Mutation:	BRCA1 Mutant (Q1785X), Myc-DDK-tagged ORF clone of Homo sapiens breast Cancer, early onset (BRCA1), transcript variant 1 as transfection-ready DNA
Effect:	Breast cancer
Symbol:	BRCA1
Synonyms:	BRCAI; BRCC1; BROVCA1; FANCS; IRIS; PNCA4; PPP1R53; PSCP; RNF53
E. coli Selection:	Kanamycin (25 ug/mL)
Mammalian Cell Selection:	Neomycin
Vector:	pCMV6-Entry (PS100001)
Tag:	Myc-DDK
ACCN:	NM_007294
ORF Size:	5352 bp
Restriction Sites:	SgfI-MluI
ORF Nucleotide Sequence:	>RC403172 representing NM_007294 Red=Cloning site Blue=ORF Green=Tags(s)

TTTTGTAATACGACTCACTATAGGGCGGCCGGGAATTCGTCGACTGGATCCGGTACCGAGGAGATCTGCC
GCC**GCGATCGCC**

ATGGATTATCTGCTCTTCGCGTTGAAGAAGTACAAAATGTCATTAATGCTATGCAGAAAATCTTAGAGT
GTCCCATCTGTCTGGAGTTGATCAAGGAACCTGTCTCCACAAAGTGTGACCACATATTTTGCAAATTTTG
CATGCTGAAACTTCTCAACCAGAAGAAAGGCCCTTCACAGTGTCTTTATGTAAGAATGATATAACCAA
AGGAGCCTACAAGAAAGTACGAGATTTAGTCAACTTGTGGAAGAGCTATTGAAAATCATTGTGCTTTTC
AGCTTGACACAGGTTTGGAGTATGCAAACAGCTATAATTTTGCAAAAAGGAAAATAACTCTCCTGAACA
TCTAAAAGATGAAGTTTCTATCATCAAAGTATGGGCTACAGAAACCGTCCAAAAGACTTCTACAGAGT
GAACCCGAAAATCCTTCTTGCAGGAAACAGTCTCAGTGTCCAACCTCTAACCTTGGAACTGTGAGAA



[View online »](#)

CTCTGAGGACAAAGCAGCGGATACAACCTCAAAAGACGTCTGTCTACATTGAATTGGGATCTGATTCTTC
 TGAAGATACCGTTAATAAGGCAACTTATTGCAGTGTGGGAGATCAAGAATTGTTACAAATCACCCCTCAA
 GGAACCAGGGATGAAATCAGTTTGGATTCTGCAAAAAGGCTGCTTGTGAATTTCTGAGACGGATGTAA
 CAAACTACTGAACATCATCAACCCAGTAATAATGATTTGAACACCACTGAGAAGCGTGCAGCTGAGAGGCA
 TCCAGAAAAGTATCAGGGTAGTTCTGTTCAAACCTGCATGTGGAGCCATGTGCCACAAATACTCATGCC
 AGCTCATTACAGCATGAGAACAGCAGTTTATTACTCACTAAAGACAGAATGAATGTAGAAAAGGCTGAAT
 TCTGTAATAAAAAGCAAACAGCCTGGCTTAGCAAGGAGCCAAACATAACAGATGGGCTGGAAGTAAGGAAAC
 ATGTAATGATAGGCGGACTCCCAGCACAGAAAAAAGGTAGATCTGAATGCTGATCCCCTGTGTGAGAGA
 AAAGAATGGAATAAGCAGAACTGCCATGCTCAGAGAATCCTAGAGATACTGAAGATGTTCTTGGATAA
 CACTAAATAGCAGCATTAGAAAAGTAAATGAGTGGTTTTCCAGAAGTATGAACTGTTAGGTTCTGATGA
 CTCACATGATGGGGAGTCTGAATCAAATGCCAAAGTAGCTGATGATTGGACGTTCTAAATGAGGTAGAT
 GAATATTCTGGTTCTTCCAGAAAAATAGACTTACTGGCCAGTATCCTCATGAGGCTTTAATATGAAAA
 GTGAAAGAGTTCACTCCAATCAGTAGAGATAATTTGAAGACAAAATTTGGGAAAACCTATCGGAA
 GAAGGCAAGCCTCCCAACTTAAGCCATGTAAGTAAAATCTAATTATAGGAGCATTGTTACTGAGCCA
 CAGATAATACAAGAGCGTCCCCTCACAATAAATTAAGCGTAAAAGGAGACCTACATCAGGCCCTTCATC
 CTGAGGATTTTATCAAGAAAGCAGATTTGGCAGTTCAAAAGACTCCTGAAATGATAAATCAGGAACTAA
 CCAAACGGAGCAGAATGGTCAAGTATGAAATTAATAAGTGGTCAATGAGAATAAAACAAAAGGTGAT
 TCTATTAGAATGAGAAAAATCCTAACCAATAGAATCACTCGAAAAAGAATCTGCTTTCAAACGAAAG
 CTGAACCTATAAGCAGCAGTAAAGCAATATGGAAGTGAATTAATAATCCACAATTCAAAAGCAGCTAA
 AAAGAATAGGCTGAGGAGGAAGTCTTACCAGGCATATTCATGCGCTTGAAGTGTAGTGTAGTGTAGTAA
 CTAAGCCACCTAATTGTACTGAATTGCAAAATGATAGTTGTTCTAGCAGTGAAGAGATAAAGAAAAAA
 AGTACAACCAAATGCCAGTCAAGCAGCAGAAAACCTACAACCTATGGAAGGTAAGAAAGTGAAGTGA
 AGCCAAAGAGTAACAAGCCAAATGAACAGACAAGTAAAAGACATGACAGCGATACTTTCCCAAGCTG
 AAGTTAAACAAATGCACCTGGTTCTTTTACTAAGTGTTCAAATACCAGTGAAGTAAAGAATTTGTCAATC
 CTAGCCTTCCAAGAGAAGAAAAAGAGAAAAGTAAAGTGTCTAATAATGCTGAAGACCC
 CAAAGATCTCATGTTAAGTGGAGAAAGGTTTTGCAAAGTGAAGATCTGTAGAGAGTAGCAGTATTTCA
 TTGGTACTGTTACTGATTATGGCACTCAGGAAAGTATCTCGTTACTGGAAGTGTAGCAGTCTAGGGAAG
 CAAAAACAGAACCAAATAAATGTGTGAGTCAAGTGTGCAGCATTGAAAACCCCAAGGACTAATTCATGG
 TTGTTCCAAAGATAATAGAAATGACACAGAAGGCTTTAAGTATCCATTGGGACATGAAGTAAACCACAGT
 CGGAAACAAGCATAGAAATGGAAGAAAGTGAAGTGTGCTCAGTATTTGCAGAATACATTCAAGGTTT
 CAAAGCGCAGTCAATTTGCTCCGTTTTCAAATCCAGGAAATGCAGAAGAGGAATGTGCAACATTCTCTGC
 CCACTCTGGGTCTTAAAGAAACAAAGTCCAAAAGTCACTTTTGAATGTGAACAAAAGGAAGAAAATCAA
 GGAAAGAATGAGTCTAATATCAAGCCTGTACAGACAGTAAATCACTGCAGGCTTTCTGTGGTTGGTC
 AGAAAGATAAGCCAGTTGATAATGCCAAATGTAGTATCAAAGGAGGCTCTAGGTTTTGTCTATCATCTCA
 GTTCAGAGGCAACGAACTGGACTCATTACTCCAAATAAACATGGACTTTTACAAAACCCATATCGTATA
 CCACCCTTTTCCCATCAAGTCATTTGTTAAACTAAATGTAAGAAAAATCTGCTAGAGGAAAACCTTG
 AGGAACATTCAATGTACCTGAAAGAGAAATGGGAAATGAGAACATCCAAGTACAGTGAACACAATTAG
 CCGTAATAACATTAGAGAAAATGTTTTAAAGAAGCCAGCTCAAGCAATTAATGAAGTAGGTTCCAGT
 ACTAATGAAGTGGCTCCAGTATTAATGAAATAGGTTCCAGTGTGAAAACATTCAAGCAGAAGTGAAGTA
 GAAACAGAGGGCCAAAATTAATGCTATGCTTAGATTAGGGTTTTGCAACCTGAGGCTATAAAACAAAG
 TCTTCTGGAAGTAATTGTAAGCATCCTGAAATAAAAAAGCAAGAATATGAAGAAGTGTTCAGACTGTT
 AATACAGATTTCTCTCCATATCTGATTTAGATAAATAGAACAGCCTATGGGAAGTGTGATGATCTC
 AGGTTTGTCTGAGACACCTGATGACCTGTTAGATGATGGTGAATAAAGGAAGATACTAGTTTTGCTGA
 AAATGACATTAAGGAAAGTTCTGCTGTTTTAGCAAAAGCGTCCAGAAAGGAGAGCTTAGCAGGAGTCT
 AGCCCTTTCACCCATACACATTTGGCTCAGGGTACCAGAGGGGCAAGAAATAGAGTCTCAGAAG
 AGAACTTACTAGTGAAGTGAAGAGCTCCCTGCTTCCAACACTTGTATTTGGTAAAGTAAACAATAT
 ACCTTCTCAGTCTACTAGGCATAGCACCCTGCTACCGAGTGTCTGTCTAAGAACACAGAGGAGAATTTA
 TTATCATTGAAGAATAGCTTAAATGACTGCAGTAACCAGGTAATATTGGCAAAGGCATCTCAGGAACATC
 ACCTTAGTGAGGAAACAAAATGTTCTGCTAGCTTGTCTTCTCACAGTGCAGTGAATTGGAAGACTTGAC
 TGCAAATACAAACACCCAGGATCCTTTCTGATTGGTTCTTCAAACAAATGAGGCATCAGTCTGAAAGC
 CAGGGAGTTGGTCTGAGTGACAAGGAATGGTTTCAGATGATGAAGAAAGAGGAACGGGCTTGAAGAAA
 ATAATCAAGAAGGCAAGCATGGATTCAAACCTTAGGTGAAGCAGCATCTGGGTGTGAGAGTGAACAAG

CGTCTCTGAAGACTGCTCAGGGCTATCCTCTCAGAGTGACATTTTAACCACTCAGCAGAGGGATACCATG
 CAACATAACCTGATAAAGCTCCAGCAGGAAATGGCTGAACTAGAAGCTGTGTTAGAACAGCATGGGAGCC
 AGCCTTCTAACAGCTACCTTCCATCATAAGTGACTCTTCTGCCCTTGAGGACCTGCGAAATCCAGAACA
 AAGCACATCAGAAAAAGCAGTATTAACCTCACAGAAAAGTAGTGAATACCTATAAGCCAGAATCCAGAA
 GGCCTTCTGCTGACAAGTTTGGAGTGTCTGCAGATAGTTCTACCAGTAAAAATAAAGAACCAGGAGTGG
 AAAGGTCATCCCCTTCTAAATGCCCATCATTAGATGATAGTGGTACATGCACAGTTGCTCTGGGAGTCT
 TCAGAATAGAACTACCCATCTCAAGAGGAGCTCATAAAGGTTGTTGATGTGGAGGACCAACAGCTGGAA
 GAGTCTGGCCACACGATTTGACGGAACATCTTACTTCCAAGGCAAGATCTAGAGGGAACCCCTTACC
 TGAATCTGGAATCAGCCTCTTCTCTGATGACCCTGAATCTGATCCTTCTGAAGCAGAGCCCCAGAGTC
 AGCTCGTGTGGCAACATACCATCTTCAACCTCTGCATTGAAAGTTCCCAATTGAAAGTTGCAGAACTCT
 GCCCAGAGTCCAGCTGCTGCTCATACTACTGACTGCTGGGTATAATGCAATGGAAGAAAGTGTGAGCA
 GGGAGAAGCCAGAATTGACAGCTTCAACAGAAAGGGTCAACAAAAGAATGTCCATGGTGGTGTCTGGCCT
 GACCCAGAAGATTTATGCTCGTGTACAAGTTGCCAGAAAACACCACATCACTTTAACTAATCTAATT
 ACTGAAGAGACTACTCATGTTGTTATGAAAACAGATGCTGAGTTTGTGTGTAACGGACACTGAAATATT
 TTCTAGGAATTCGGGAGGAAAATGGGTAGTTAGCTATTCTGGGTGACCCAGTCTATTAAGAAAGAAA
 AATGCTGAATGAGCATGATTTTGAAGTCAGAGGAGATGTGGTCAATGGAAGAAACCACCAAGGTCCAAG
 CGAGCAAGAGAATCCCAGGACAGAAAGATCTTCAGGGGCTAGAAATCTGTTGCTATGGGCCCTTACCA
 ACATGCCACAGATCACTGGAATGGATGGTA

AGCGGACCGACGCGTACGCGGCCGCTCGAGCAGAAACTCATCTCAGAAGAGGATCTGGCAGCAAATGATATCC
 TGGATTACAAGGATGACGACGA TAAGGTTTAA

Protein Sequence:

>RC403172 representing NM_007294
 Red=Cloning site Green=Tags(s)

MDLSALRVEEVQNVINAMQKILECPICLLELIKEPVSTKCDHIFCKFCMLKLLNQKKGPSQCPLCKNDITK
 RSLQESTRFSQLVEELLKIICAFQLDTGLEANSYNFAKKENNSPEHLKDEVSI IQSMGYRNRARLLQS
 EPENPSLQETSLSVQLSNLGTVRTLRKQRIQPQKTSVYIELGSDSSEDTVNKATYCSVGDQELLQITPQ
 GTRDEISLDSAKKAACEFSETDVTNTEHHQPSNNDLNTTEKRAAERHPEKYQGSSVSNLHVEPCGNTNHA
 SSLQHENSLLLLTKDRMNVEKAIEFCNKSQKQPLARSQHNRWAGSKETCNDRRTPSEKVDLNLADNLCER
 KEWVKQKLPCESENPRDTEVPWITLNSIQKVNWF SRDELGSDSDHGESESNKAVADVLDVLEVD
 EYSGSSEKIDLLASDPHEALICKSERVHKSVE SNIEDKIFGKTYRKKASLPNL SHVTENLIIGAFVTEP
 QIIQERPLTNLKRKRRTSGLHPEDFIKKADLAVQKTPEMINQGTNQTEQNGQVMNITNSGHENKTKGD
 SIQNEKNPNPIESLEKESAFKTKAEPISSSISNMELELNIHNSKAPKKNRLRRKSSTRHIALELVSRN
 LSPNCTELQIDSCSSSEI KKKKYNQMPVRHSRNLQLMEGKEPATGAKKSNKPNEQTSKRHSDTFPEL
 KL TNAPGSFTKCSNTSELKEFVNPSLPREEKEELETVKVSNNAEDPKDMLSGERVLQTERSVESSSIS
 LVPGTDYGTQESISLLEVSTLGAKTEPNKCVSQCAAFENPKGLIHGCSKDNRNDEGFKYPLGHEVNH
 RETSIEMEESELDAQYLQNTFKVSKRQSFAPFSNPGNAEEECATFSAHSGSLKKQSPKVFTECEQKEENQ
 GKNESNIKPVTVNITAGFPVVGQKDKPVDNAKCSIKGSRFCLSSQFRGNETGLITPNKHGLLQNPYRI
 PPLFPIKSFVKTKCKKNLLEENFEEHSMSPEREMGNENIPSTVSTISRNNIRENVFKEASSSINEVGS
 TNEVGSSINEIGSSDENIQAELGRNRGPKLNAMLRLGVLQPEVYKQSLPGSNCKHPEIKKQYEEVVQTV
 NTDFSPYLISDNLEQPMGSSHASQVCSETPDDLDDGEIKEDTSFAENDIKESSAVFSKSVQKGE LSRP
 SPFTHTHLAQGYRRGAKKLESSEENLSSEDEELPCFQHLLFGKVNIPISQSTRHSTVATECLSKNTEENL
 LSLKNSLNDCSNQVILAKASQEHHLSEETKCSASLFSQCSELEDLTANTNTQDPFLIGSSKQMRHQSES
 QGVGLSDKELVSDDEERGTGLEENQEEQSMDSNLGAAAGCESETSVSEDCSGLSSQSDILTTQQRDTM
 QHNLIKLQEMAELAVLEQHGSQPSNSYPSII SDSSALEDLRNPEQSTSEKAVLTSQKSSEYPI SQNPE
 GLSADKFEVSADSSTSKNKEPGVERSSPKCPSLDDRWMHSCSGSLQNRNYP SQEELIKVVDVEEQLE
 ESGPHDLTETSYLPRQLEGTPYLESGISLFSDDPESDPSEDRAPE SARVGNIPSSSALKVPQLKVAES
 AQSPAAAHTTDTAGYNAMEESVSREKPELTASTERNKRMVMVSGLTPEEFMLVYKFARKHHITLNL I
 TEETTHVMKTADEFVCERTLKYFLGIAGGKVVSYFWVTQSIKERKMLNEHDFEVRGDVVNGRNHQGPK
 RARESQRKIFRGLIEICCYGPFNMPTDQLEWMV

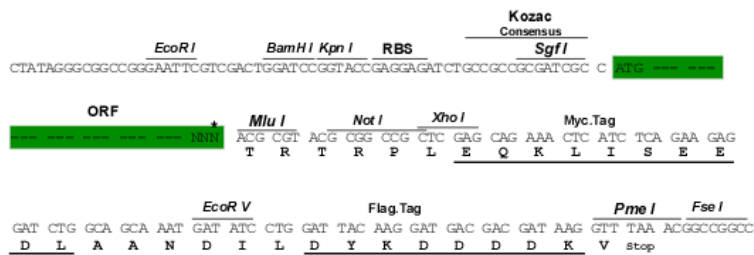
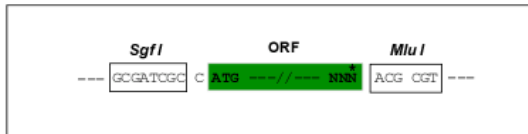
SGPTRRRLQKLI SEEDLAANDILDYKDDDDKV

Restriction Sites:

Cloning Scheme:

Sgfl-MluI

Cloning sites used for ORF Shutting:



* The last codon before the Stop codon of the ORF

OTI Disclaimer:	<p>Due to the inherent nature of this plasmid, standard methods to replicate additional amounts of DNA in E. coli are highly likely to result in mutations and/or rearrangements. Therefore, OriGene does not guarantee the capability to replicate this plasmid DNA. Additional amounts of DNA can be purchased from OriGene with batch-specific, full-sequence verification at a reduced cost. Please contact our customer care team at custsupport@origene.com or by calling 301.340.3188 option 3 for pricing and delivery.</p> <p>The molecular sequence of this clone aligns with the gene accession number as a point of reference only. However, individual transcript sequences of the same gene can differ through naturally occurring variations (e.g. polymorphisms), each with its own valid existence. This clone is substantially in agreement with the reference, but a complete review of all prevailing variants is recommended prior to use. More info</p>
OTI Annotation:	This clone was engineered to express the complete ORF with an expression tag. Expression varies depending on the nature of the gene.
Components:	The ORF clone is ion-exchange column purified and shipped in a 2D barcoded Matrix tube containing 10ug of transfection-ready, dried plasmid DNA (reconstitute with 100 ul of water).
RefSeq:	NP_009225
RefSeq Size:	5352 bp
RefSeq ORF:	5592 bp
Locus ID:	672
Cytogenetics:	17q21.31
Domains:	BRCT, RING
Protein Families:	Druggable Genome, Transcription Factors
Protein Pathways:	Ubiquitin mediated proteolysis
MW:	196.2 kDa

Gene Summary:

This gene encodes a 190 kD nuclear phosphoprotein that plays a role in maintaining genomic stability, and it also acts as a tumor suppressor. The BRCA1 gene contains 22 exons spanning about 110 kb of DNA. The encoded protein combines with other tumor suppressors, DNA damage sensors, and signal transducers to form a large multi-subunit protein complex known as the BRCA1-associated genome surveillance complex (BASC). This gene product associates with RNA polymerase II, and through the C-terminal domain, also interacts with histone deacetylase complexes. This protein thus plays a role in transcription, DNA repair of double-stranded breaks, and recombination. Mutations in this gene are responsible for approximately 40% of inherited breast cancers and more than 80% of inherited breast and ovarian cancers. Alternative splicing plays a role in modulating the subcellular localization and physiological function of this gene. Many alternatively spliced transcript variants, some of which are disease-associated mutations, have been described for this gene, but the full-length natures of only some of these variants has been described. A related pseudogene, which is also located on chromosome 17, has been identified. [provided by RefSeq, May 2020]