

## Product datasheet for **RC403169**

### **BRCA1 (NM\_007294) Human Mutant ORF Clone**

#### Product data:

Product Type:	Mutant ORF Clones
Product Name:	BRCA1 (NM_007294) Human Mutant ORF Clone
Mutation Description:	W1782X
Affected Codon#:	1782
Affected NT#:	5345
Nucleotide Mutation:	BRCA1 Mutant (W1782X), Myc-DDK-tagged ORF clone of Homo sapiens breast Cancer, early onset (BRCA1), transcript variant 1 as transfection-ready DNA
Effect:	Breast and/or ovarian cancer
Symbol:	BRCA1
Synonyms:	BRCAI; BRCC1; BROVCA1; FANCS; IRIS; PNCA4; PPP1R53; PSCP; RNF53
E. coli Selection:	Kanamycin (25 ug/mL)
Mammalian Cell Selection:	Neomycin
Vector:	pCMV6-Entry (PS100001)
Tag:	Myc-DDK
ACCN:	NM_007294
ORF Size:	5343 bp
Restriction Sites:	Sgfl-Mlul
ORF Nucleotide Sequence:	>RC403169 representing NM_007294 Red=Cloning site Blue=ORF Green=Tags(s)

TTTTGTAATACGACTCACTATAGGGCGGCCGGGAATTCGTCGACTGGATCCGGTACCGAGGAGATCTGCC  
GCC**CGATCGCC**

ATGGATTATCTGCTCTTCGCGTTGAAGAAGTACAAAATGTCATTAATGCTATGCAGAAAATCTTAGAGT  
GTCCCATCTGTCTGGAGTTGATCAAGGAACCTGTCTCCACAAAGTGTGACCACATATTTTGCAAATTTTG  
CATGCTGAAACTTCTCAACCAGAAGAAAGGCCCTCACAGTGTCTTTATGTAAGAATGATATAACCAA  
AGGAGCCTACAAGAAAGTACGAGATTTAGTCAACTTGTGAAGAGCTATTGAAAATCATTGTGCTTTTC  
AGCTTGACACAGGTTTGGAGTATGCAAACAGCTATAATTTTGCAAAAAGGAAAATAACTCTCCTGAACA  
TCTAAAAGATGAAGTTTCTATCATCAAAGTATGGGCTACAGAAACCGTCCAAAAGACTTCTACAGAGT  
GAACCCGAAAATCCTTCTTGCAGGAAACAGTCTCAGTGTCCAACCTCTAACCTTGGAACTGTGAGAA



[View online »](#)

CTCTGAGGACAAAGCAGCGGATACAACCTCAAAAGACGTCTGTCTACATTGAATTGGGATCTGATTCTTC  
 TGAAGATACCGTTAATAAGGCAACTTATTGCAGTGTGGGAGATCAAGAATTGTTACAAATCACCCCTCAA  
 GGAACCAGGGATGAAATCAGTTTGGATTCTGCAAAAAGGCTGCTTGTGAATTTTCTGAGACGGATGTAA  
 CAAATACTGAACATCATCAACCCAGTAATAATGATTTGAACACCACTGAGAAGCGTGCAGCTGAGAGGCA  
 TCCAGAAAAGTATCAGGGTAGTTCTGTTCAAACCTGCATGTGGAGCCATGTGCCACAAATACTCATGCC  
 AGCTCATTACAGCATGAGAACAGCAGTTTATTACTCACTAAAGACAGAATGAATGTAGAAAAGGCTGAAT  
 TCTGTAATAAAAAGCAACAGCCTGGCTTAGCAAGGAGCCAAACATAACAGATGGGCTGGAAGTAAGGAAAC  
 ATGTAATGATAGGCGGACTCCCAGCACAGAAAAAAGGTAGATCTGAATGCTGATCCCCTGTGTGAGAGA  
 AAAGAATGGAATAAGCAGAACTGCCATGCTCAGAGAATCCTAGAGATACTGAAGATGTTCTTGGATAA  
 CACTAAATAGCAGCATTAGAAAAGTAAATGAGTGGTTTTCCAGAAGTATGAACTGTTAGGTTCTGATGA  
 CTCACATGATGGGGAGTCTGAATCAAATGCCAAAGTAGCTGATGATTGGACGTTCTAAATGAGGTAGAT  
 GAATATTCTGGTTCTTCCAGAAAAATAGACTTACTGGCCAGTATCCTCATGAGGCTTTAATATGAAAA  
 GTGAAAGAGTTCACTCCAAATCAGTAGAGATAATTTGAAGACAAAATTTGGGAAAACCTATCGGAA  
 GAAGGCAAGCCTCCCAACTTAAGCCATGTAAGTAAAATCTAATTATAGGAGCATTGTTACTGAGCCA  
 CAGATAATACAAGAGCGTCCCCTCACAATAAATTAAGCGTAAAAGGAGACCTACATCAGGCCCTTCATC  
 CTGAGGATTTTATCAAGAAAGCAGATTTGGCAGTTCAAAAGACTCCTGAAATGATAAATCAGGAACTAA  
 CCAAACGGAGCAGAATGGTCAAGTATGAAATTAATAAGTGGTCAATGAGAATAAAACAAAAGGTGAT  
 TCTATTAGAATGAGAAAAATCCTAACCAATAGAATCACTCGAAAAAGAATCTGCTTTCAAACGAAAAG  
 CTGAACCTATAAGCAGCAGTAAAGCAATATGGAAGTGAATTAATAATCCACAATTCAAAAGCAGCTAA  
 AAAGAATAGGCTGAGGAGGAAGTCTTACCAGGCATATTCATGCGCTTGAAGTGTAGTGTAGTGTAGTAA  
 CTAAGCCACCTAATTGTACTGAATGCAAAATGATAGTTGTTCTAGCAGTGAAGAGATAAAGAAAAAAA  
 AGTACAACCAAATGCCAGTCAAGCAGCAGAAAACCTACAACCTATGGAAGGTAAGAAAGTGAAGTGA  
 AGCCAAGAGAGTAACAAGCCAAATGAACAGACAAGTAAAAGACATGACAGCGATACTTTCCCAAGCTG  
 AAGTTAACAAATGCACCTGGTTCTTTTACTAAGTGTTCAAATACCAGTGAAGTAAAGAATTTGTCAATC  
 CTAGCCTTCCAAGAGAAGAAAAAGAGAAAAGTAAAGTGTCTAATAATGCTGAAGACCC  
 CAAAGATCTCATGTTAAGTGGAGAAAGGTTTTGCAAAGTGAAGATCTGTAGAGAGTAGCAGTATTTCA  
 TTGGTACTGTTACTGATTATGGCACTCAGGAAAGTATCTCGTTACTGGAAGTGTAGCAGTCTAGGGAAG  
 CAAAAACAGAACCAAATAAATGTGTGAGTCAAGTGTGCAGCATTGAAAACCCCAAGGACTAATTCATGG  
 TTGTTCCAAAGATAATAGAAATGACACAGAAGGCTTTAAGTATCCATTGGGACATGAAGTAAACACAGT  
 CGGAAACAAGCATAGAAATGGAAGAAAGTGAAGTGTGCTCAGTATTTGCAGAATACATTCAAGGTTT  
 CAAAGCGCCAGTCAATTTGCTCCGTTTTCAAATCCAGGAAATGCAGAAGAGGAATGTGCAACATTCTCTGC  
 CCACTCTGGGTCTTAAAGAAACAAAGTCCAAAAGTCACTTTTGAATGTGAACAAAAGGAAGAAAATCAA  
 GGAAAGAATGAGTCTAATATCAAGCCTGTACAGACAGTAAATCACTGCAGGCTTTCTGTGGTTGGTC  
 AGAAAGATAAGCCAGTTGATAATGCCAAATGTAGTATCAAAGGAGGCTCTAGGTTTTGTCTATCATCTCA  
 GTTCAGAGGCAACGAACTGGACTCATTACTCCAAATAAATGGAAGTAAAGTAAAGTAAAGTAAAGTAA  
 CCACCCTTTTCCCATCAAGTCAATTTGTTAAACTAAATGTAAGAAAAATCTGCTAGAGGAAAACCTTGG  
 AGGAACATTCAATGTACCTGAAAGAGAAATGGGAAATGAGAACATTCAGTACAGTGAACACAATTAG  
 CCGTAATAACATTAGAGAAAATGTTTTAAAGAAGCCAGCTCAAGCAATTAATGAAGTAGGTTCCAGT  
 ACTAATGAAGTGGCTCCAGTATTAATGAAATAGGTTCCAGTGTGAAAACATTCAAGCAGAAGTGAAGTA  
 GAAACAGAGGGCCAAAATGAAATGCTATGCTTAGATTAGGGTTTTGCAACCTGAGGCTATAAAACAAAG  
 TCTTCTGGAAGTAATTGTAAGCATCCTGAAATAAAAAAGCAAGAATATGAAGAAGTGTTCAGACTGTT  
 AATACAGATTTCTCTCCATATCTGATTTAGATAAATAGAACAGCCTATGGGAAGTGTGATGATCTC  
 AGGTTTGTCTGAGACACCTGATGACCTGTTAGATGATGGTGAATAAAGGAAGATACTAGTTTTGCTGA  
 AAATGACATTAAGGAAAGTTCTGCTGTTTTAGCAAAGCGTCCAGAAAGGAGAGCTTAGCAGGAGTCTC  
 AGCCCTTTCACCCATACACATTTGGCTCAGGGTACCAGAGGGGCAAGAAATAGAGTCTCAGAAG  
 AGAACTTACTAGTGAAGTGAAGAGCTCCCTGCTTCCAACACTGTTATTTGGTAAAGTAAACAATAT  
 ACCTTCTCAGTCTACTAGGCATAGCACCCTGCTACCGAGTGTCTGTCTAAGAACACAGAGGAGAATTTA  
 TTATCATTGAAGAATAGCTTAAATGACTGCAGTAACCAGGTAATATTGGCAAAGGCATCTCAGGAACATC  
 ACCTTAGTGAGGAAACAAAATGTTCTGCTAGCTGTTTTCTTCCAGTGCAGTGAATTGGAAGACTTGAC  
 TGCAAATACAAACACCCAGGATCCTTTCTGATTGGTTCTTCAAACAAATGAGGCATCAGTCTGAAAGC  
 CAGGGAGTTGGTCTGAGTGACAAGGAATGGTTTCAGATGATGAAGAAAGAGGAACGGGCTTGAAGAAA  
 ATAATCAAGAAGGCAAGCATGGATTCAAACCTTAGGTGAAGCAGCATCTGGGTGTGAGAGTGAACAAG

CGTCTCTGAAGACTGCTCAGGGCTATCCTCTCAGAGTGACATTTTAACCACTCAGCAGAGGGATACCATG  
 CAACATAACCTGATAAAGCTCCAGCAGGAAATGGCTGAACTAGAAGCTGTGTTAGAACAGCATGGGAGCC  
 AGCCTTCTAACAGCTACCTTCCATCATAAGTGACTCTTCTGCCCTTGAGGACCTGCGAAATCCAGAACA  
 AAGCACATCAGAAAAAGCAGTATTAACCTCACAGAAAAGTAGTGAATACCTATAAGCCAGAATCCAGAA  
 GGCTTTCTGCTGACAAGTTTGGAGTGTCTGCAGATAGTTCTACCAGTAAAAATAAAGAACCAGGAGTGG  
 AAAGGTCATCCCCTTCTAAATGCCCATCATTAGATGATAGTGGTACATGCACAGTTGCTCTGGGAGTCT  
 TCAGAATAGAAACTACCATCTCAAGAGGAGCTCATAAGGTTGTTGATGTGGAGGACCAACAGCTGGAA  
 GAGTCTGGCCACACGATTTGACGGAACATCTTACTTCCAAGGCAAGATCTAGAGGGAACCCCTTACC  
 TGAATCTGGAATCAGCCTCTTCTCTGATGACCCTGAATCTGATCCTTCTGAAGCAGAGCCCCAGAGTC  
 AGCTCGTGTGGCAACATACCATCTTCAACCTCTGCATTGAAAGTTCCCAATTGAAAGTTGCAGAACT  
 GCCCAGAGTCCAGCTGCTGCTCATACTACTGACTGCTGGGTATAATGCAATGGAAGAAAGTGTGAGCA  
 GGGAGAAGCCAGAATTGACAGCTTCAACAGAAAGGGTCAACAAAAGAATGTCCATGGTGGTGTCTGGCCT  
 GACCCAGAAGATTTATGCTCGTGTACAAGTTGCCAGAAAACACCACATCACTTTAACTAATCTAATT  
 ACTGAAGAGACTACTCATGTTGTTATGAAAACAGATGCTGAGTTTGTGTGTAACGGACACTGAAATATT  
 TTCTAGGAATTCGGGAGGAAAATGGGTAGTTAGCTATTCTGGGTGACCCAGTCTATTAAGAAAGAAA  
 AATGCTGAATGAGCATGATTTTGAAGTCAGAGGAGATGTGGTCAATGGAAGAAACCACCAAGGTCCAAG  
 CGAGCAAGAGAATCCCAGGACAGAAAAGATCTTCAGGGGCTAGAAATCTGTTGCTATGGGCCCTTACCA  
 ACATGCCACAGATCAACTGAA

AGCGGACCGACGCGTACGCGGCCGCTCGAGCAGAAACTCATCTCAGAAGAGGATCTGGCAGCAAATGATATCC  
 TGGATTACAAGGATGACGACGA TAAGGTTTAA

**Protein Sequence:**

>RC403169 representing NM\_007294  
 Red=Cloning site Green=Tags(s)

MDLSALRVEEVQNVINAMQKILECPICLLEIKEPSTKCDHIFCKFCMLKLLNQKKGPSQCPLCKNDITK  
 RSLQESTRFSQLVEELLKIIICAFQLDTGLEAYNSYNFAKKENNSPEHLKDEVSI IQSMGYRNRARLLQS  
 EPENPSLQETSLSVQLSNLGTVRTLRKQRIQPQKTSVYIELGSDSSEDTVNKATYCSVGDQELLQITPQ  
 GTRDEISLDSAKKAACEFSETDVTNTEHHQPSNNDLNTTEKRAAERHPEKYQGSSVSNLHVPCGNTNHA  
 SSLQHENSLLLLTKDRMNVEKAIEFCNKSKQPLARSQHNWRWAGSKETCNDRRTPSEKVDLNLNDCER  
 KEWVKQKLPCESENPRDTEVPWITLNSIQKVNWF SRDELGSDSDHGESESNKAVADVLDVLEVD  
 EYSGSSEKIDLLASDPHEALICKSERVHSKSVESNIEDKIFGKTYRKKASLPNL SHVTENLIIGAFVTEP  
 QIIQERPLTNLKRKRRTSGLHPEDFIKKADLAVQKTPEMINQGTNQTEQNGQVMNITNSGHENKTKGD  
 SIQNEKNPNPIESLEKESAFKTKAEPISSSISNMELELNIHNSKAPKKNRLRRKSSTRHIAHALELVSRN  
 LSPNCTELQIDSCSSSEEIKKKKYNQMPVRSRNLQLMEGKEPATGAKKSNKPNEQTSKRHSDTFPEL  
 KLTNAPGSFTKCSNTSELKEFVNPSLPREEKEKLETVKVSNNAEDPKDMLSGERVLTQERSVSSSIS  
 LVPGTDYGTQESISLLEVSTLGAKTEPNKCVSQCAAFENPKGLIHGCSKDNRNDEGFKYPLGHEVNH  
 RETSIEMEESELDAQYLQNTFKVSKRQSFAPFSNPGNAEEECATFSAHSGSLKKQSPKVFCECEQKEENQ  
 GKNESNIKPVTVNITAGFPVVGQKDKPVDNAKCSIKGSRFCLSSQFRGNETGLITPNKHGLLQNPYRI  
 PPLFPIKSFVKTKCKKNLLEENFEHSMSPEREMGNENIPSTVSTISRNNIRENVFKEASSNINEVGSS  
 TNEVGSSINEIGSSDENIQAELGRNRGPKLNAMLRLGVLQPEVYKQSLPGSNCKHPEIKKQYEEVVQTV  
 NTDFSPYLISDNLEQPMGSSHASQVCSETPDDLDDGEIKEDTSAFENDIKESSAVFSKSVQKGE  
 LSRSPSPFTHTHLAQGYRRGAKKLESSEENLSSEDEELPCFQHLLFGKVNIPISQSTRHSTVATECLSKNTEENL  
 LSLKNSLNDCSNQVILAKASQEHHLSEETKCSASLFSQCSELEDLTANTNTQDPFLIGSSKQMRHQS  
 QGVGLSDKELVSDDEERGTGLEENQEEQSMDSNLGAAAGCESETSVSEDCSGLSSQSDILTTQQRD  
 TMQHNLIKLQEMAELAVLEQHGSPNSYPSIISDSSALEDLRNPEQSTSEKAVLTSQKSSEYPI  
 SQNPGLSADKFEVSADSSTSKNKEPGVERSSPKPSLDDRWMHSCSGSLQNRNYPQSEELIKVVDVEEQ  
 LLEESGPHDLTETSYLPRQLEGTPYLESGISLFSDDPESDPSEDRAPE SARVGNIPSSSALKVPQLKVAES  
 AQSPAAAHTTDTAGYNAMEESVSREKPELTASTERNKRMVMVSGLTPEEFMLVYKFKRHHITLNL  
 ITEETTHVMKTADEFVCERTLKYFLGIAGGKVVSYFVWTQSIKERKMLNEHDFEVRGDVVNGRNHQGP  
 K RARESQRKIFRGLIICCYGPFNMPTDQLE

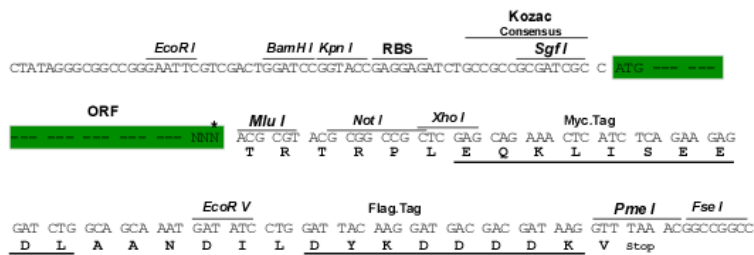
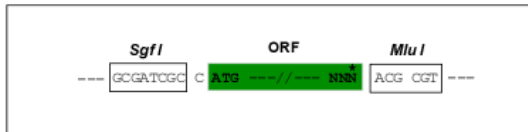
SGPTRRRLQKLI SEEDLAANDILDYKDDDDKV

Restriction Sites:

Cloning Scheme:

Sgfl-MluI

Cloning sites used for ORF Shutting:



\* The last codon before the Stop codon of the ORF

<b>OTI Disclaimer:</b>	<p>Due to the inherent nature of this plasmid, standard methods to replicate additional amounts of DNA in E. coli are highly likely to result in mutations and/or rearrangements. Therefore, OriGene does not guarantee the capability to replicate this plasmid DNA. Additional amounts of DNA can be purchased from OriGene with batch-specific, full-sequence verification at a reduced cost. Please contact our customer care team at <a href="mailto:custsupport@origene.com">custsupport@origene.com</a> or by calling 301.340.3188 option 3 for pricing and delivery.</p> <p>The molecular sequence of this clone aligns with the gene accession number as a point of reference only. However, individual transcript sequences of the same gene can differ through naturally occurring variations (e.g. polymorphisms), each with its own valid existence. This clone is substantially in agreement with the reference, but a complete review of all prevailing variants is recommended prior to use. <a href="#">More info</a></p>
<b>OTI Annotation:</b>	This clone was engineered to express the complete ORF with an expression tag. Expression varies depending on the nature of the gene.
<b>Components:</b>	The ORF clone is ion-exchange column purified and shipped in a 2D barcoded Matrix tube containing 10ug of transfection-ready, dried plasmid DNA (reconstitute with 100 ul of water).
<b>RefSeq:</b>	<a href="#">NP_009225</a>
<b>RefSeq Size:</b>	5343 bp
<b>RefSeq ORF:</b>	5592 bp
<b>Locus ID:</b>	672
<b>Cytogenetics:</b>	17q21.31
<b>Domains:</b>	BRCT, RING
<b>Protein Families:</b>	Druggable Genome, Transcription Factors
<b>Protein Pathways:</b>	Ubiquitin mediated proteolysis
<b>MW:</b>	195.9 kDa

**Gene Summary:**

This gene encodes a 190 kD nuclear phosphoprotein that plays a role in maintaining genomic stability, and it also acts as a tumor suppressor. The BRCA1 gene contains 22 exons spanning about 110 kb of DNA. The encoded protein combines with other tumor suppressors, DNA damage sensors, and signal transducers to form a large multi-subunit protein complex known as the BRCA1-associated genome surveillance complex (BASC). This gene product associates with RNA polymerase II, and through the C-terminal domain, also interacts with histone deacetylase complexes. This protein thus plays a role in transcription, DNA repair of double-stranded breaks, and recombination. Mutations in this gene are responsible for approximately 40% of inherited breast cancers and more than 80% of inherited breast and ovarian cancers. Alternative splicing plays a role in modulating the subcellular localization and physiological function of this gene. Many alternatively spliced transcript variants, some of which are disease-associated mutations, have been described for this gene, but the full-length natures of only some of these variants has been described. A related pseudogene, which is also located on chromosome 17, has been identified. [provided by RefSeq, May 2020]