

Product datasheet for **RC403168**

BRCA1 (NM_007294) Human Mutant ORF Clone

Product data:

Product Type:	Mutant ORF Clones
Product Name:	BRCA1 (NM_007294) Human Mutant ORF Clone
Mutation Description:	W1782X
Affected Codon#:	1782
Affected NT#:	5346
Nucleotide Mutation:	BRCA1 Mutant (W1782X), Myc-DDK-tagged ORF clone of Homo sapiens breast Cancer, early onset (BRCA1), transcript variant 1 as transfection-ready DNA
Effect:	Breast cancer
Symbol:	BRCA1
Synonyms:	BRCAI; BRCC1; BROVCA1; FANCS; IRIS; PNCA4; PPP1R53; PSCP; RNF53
E. coli Selection:	Kanamycin (25 ug/mL)
Mammalian Cell Selection:	Neomycin
Vector:	pCMV6-Entry (PS100001)
Tag:	Myc-DDK
ACCN:	NM_007294
ORF Size:	5343 bp
Restriction Sites:	SgfI-MluI
ORF Nucleotide Sequence:	>RC403168 representing NM_007294 Red=Cloning site Blue=ORF Green=Tags(s)

TTTTGTAATACGACTCACTATAGGGCGCCGGGAATTCGTCGACTGGATCCGGTACCGAGGAGATCTGCC
GCC**CGATCGCC**

ATGGATTATCTGCTCTTCGCGTTGAAGAAGTACAAAATGTCATTAATGCTATGCAGAAAATCTTAGAGT
GTCCCATCTGTCTGGAGTTGATCAAGGAACCTGTCTCCACAAAGTGTGACCACATATTTTGCAAATTTTG
CATGCTGAAACTTCTCAACCAGAAGAAAGGGCCTTCACAGTGTCTTTATGTAAGAATGATATAACCAA
AGGAGCCTACAAGAAAGTACGAGATTTAGTCAACTTGTGGAAGAGCTATTGAAAATCATTGTGCTTTTC
AGCTTGACACAGGTTTGGAGTATGCAAACAGCTATAATTTTGCAAAAAGGAAAATAACTCTCCTGAACA
TCTAAAAGATGAAGTTTCTATCATCAAAGTATGGGCTACAGAAACCGTCCAAAAGACTTCTACAGAGT
GAACCCGAAAATCCTTCTTGCAGGAAACAGTCTCAGTGTCCAACCTCTAACCTTGGAACTGTGAGAA



[View online »](#)

CTCTGAGGACAAAGCAGCGGATACAACCTCAAAAGACGTCTGTCTACATTGAATTGGGATCTGATTCTTC
 TGAAGATACCGTTAATAAGGCAACTTATTGCAGTGTGGGAGATCAAGAATTGTTACAAATCACCCCTCAA
 GGAACCAGGGATGAAATCAGTTTGGATTCTGCAAAAAGGCTGCTTGTGAATTTCTGAGACGGATGTAA
 CAAACTACTGAACATCATCAACCCAGTAATAATGATTTGAACACCACTGAGAAGCGTGCAGCTGAGAGGCA
 TCCAGAAAAGTATCAGGGTAGTTCTGTTCAAACCTGCATGTGGAGCCATGTGCCACAAATACTCATGCC
 AGCTCATTACAGCATGAGAACAGCAGTTTATTACTCACTAAAGACAGAATGAATGTAGAAAAGGCTGAAT
 TCTGTAATAAAAAGCAAACAGCCTGGCTTAGCAAGGAGCCAAACATAACAGATGGGCTGGAAGTAAGGAAAC
 ATGTAATGATAGGCGGACTCCCAGCACAGAAAAAAGGTAGATCTGAATGCTGATCCCCTGTGTGAGAGA
 AAAGAATGGAATAAGCAGAACTGCCATGCTCAGAGAATCCTAGAGATACTGAAGATGTTCTTGGATAA
 CACTAAATAGCAGCATTAGAAAAGTAAATGAGTGGTTTTCCAGAAGTATGAACTGTTAGGTTCTGATGA
 CTCACATGATGGGGAGTCTGAATCAAATGCCAAAGTAGCTGATGATTGGACGTTCTAAATGAGGTAGAT
 GAATATTCTGGTTCTTCCAGAAAAATAGACTTACTGGCCAGTATCCTCATGAGGCTTTAATATGAAAA
 GTGAAAGAGTTCACTCCAAATCAGTAGAGATAATATTGAAGACAAAATATTTGGGAAAACCTATCGGAA
 GAAGGCAAGCCTCCCAACTTAAGCCATGTAAGTAAAATCTAATTATAGGAGCATTGTTACTGAGCCA
 CAGATAATACAAGAGCGTCCCCTCACAATAAATTAAGCGTAAAAGGAGACCTACATCAGGCCCTTCATC
 CTGAGGATTTTATCAAGAAAGCAGATTTGGCAGTTCAAAAGACTCCTGAAATGATAAATCAGGGAACAA
 CCAAACGGAGCAGAATGGTCAAGTATGAAATTAATAAGTGGTCAATGAGAATAAAACAAAAGGTGAT
 TCTATTAGAATGAGAAAAATCCTAACCAATAGAATCACTCGAAAAAGAATCTGCTTTCAAACGAAAAG
 CTGAACCTATAAGCAGCAGTAAAGCAATATGGAAGTGAATTAATAATCCACAATCAAAGACCTAA
 AAAGAATAGGCTGAGGAGGAAGTCTTACCAGGCATATTCATGCGCTTGAAGTGTAGTGTAGTGTAGTAA
 CTAAGCCACCTAATTGTACTGAATTGCAAAATGATAGTTGTTCTAGCAGTGAAGAGATAAAGAAAAAA
 AGTACAACCAAATGCCAGTCAAGCAGCAGAAAACCTACAACCTATGGAAGGTAAGAACCTGCAACTGG
 AGCCAAGAGAGTAACAAGCCAAATGAACAGACAAGTAAAAGACATGACAGCGATACTTTCCCAAGCTG
 AAGTTAACAATGCACCTGGTTCTTTTACTAAGTGTTCAAATACCAAGTGAACCTAAAGAATTTGTCAATC
 CTAGCCTTCCAAGAGAAGAAAAAGAGAAAACACTAGAAAACAGTTAAAGTGTCTAATAATGCTGAAGACC
 CAAAGATCTCATGTTAAGTGGAGAAAGGTTTTGCAAACCTGAAAGATCTGTAGAGAGTAGCAGTATTTCA
 TTGGTACTGTTACTGATTATGGCACTCAGGAAAGTATCTCGTTACTGGAAGTTAGCACTCTAGGGAAGG
 CAAAAACAGAACCAAATAAATGTGTGAGTCAAGTGTGCAGCATTGAAAACCCCAAGGGACTAATTCATGG
 TTGTTCCAAAGATAATAGAAATGACACAGAAGGCTTTAAGTATCCATTGGGACATGAAGTAAACCACAGT
 CGGAAACAAGCATAGAAATGGAAGAAAGTGAACCTGATGCTCAGTATTTGCAGAATACATTCAAGGTTT
 CAAAGCGCCAGTCAATTTGCTCCGTTTTCAAATCCAGGAAATGCAGAAGAGGAATGTGCAACATTCTCTGC
 CCACTCTGGGTCTTAAAGAAACAAAGTCCAAAAGTCACTTTTGAATGTGAACAAAAGGAAGAAAATCAA
 GGAAAGAATGAGTCTAATATCAAGCCTGTACAGACAGTTAATATCACTGCAGGCTTTCTGTGGTTGGTC
 AGAAAGATAAGCCAGTTGATAATGCCAAATGTAGTATCAAAGGAGGCTCTAGGTTTTGTCTATCATCTCA
 GTTCAGAGGCAACGAACTGGACTCATTACTCCAAATAAACATGGACTTTTACAAAACCCATATCGTATA
 CCACCCTTTTCCCATCAAGTCATTTGTTAAAATAAATGTAAGAAAAATCTGCTAGAGGAAAACCTTGG
 AGGAACATTCAATGTACCTGAAAGAGAAATGGGAAATGAGAACATCCAAGTACAGTGAACACAATTAG
 CCGTAATAACATTAGAGAAAAATGTTTTAAAGAAGCCAGCTCAAGCAATATTAATGAAGTAGGTTCCAGT
 ACTAATGAAGTGGCTCCAGTATTAATGAAATAGGTTCCAGTGTGAAAACATTCAAGCAGAACCTAGGTA
 GAAACAGAGGGCCAAAATGAAATGCTATGCTTAGATTAGGGTTTTGCAACCTGAGGCTATAAAACAAAG
 TCTTCTGGAAGTAATTGTAAGCATCCTGAAATAAAAAAGCAAGAATATGAAGAAGTAGTTCAGACTGTT
 AATACAGATTTCTCTCCATATCTGATTTAGATAAATAGAACAGCCTATGGGAAGTAGTCATGCATCTC
 AGGTTTGTCTGAGACACCTGATGACCTGTTAGATGATGGTGAATAAAGGAAGATACTAGTTTTGCTGA
 AAATGACATTAAGGAAAGTTCTGCTGTTTTAGCAAAAGCGTCCAGAAAGGAGAGCTTAGCAGGAGTCTC
 AGCCCTTTCACCCATACACATTTGGCTCAGGGTACCAGAGGGGGCCAAAGAAATAGAGTCTCAGAAG
 AGAACTTACTAGTGAGGATGAAGAGCTCCCTGCTTCCAACACTTGTTATTTGGTAAAGTAAACAATAT
 ACCTTCTCAGTCTACTAGGCATAGCACCGTTGCTACCGAGTGTCTGTCTAAGAACACAGAGGAGAATTTA
 TTATCATTGAAGAATAGCTTAAATGACTGCAGTAACCAGGTAATATTGGCAAAGGCATCTCAGGAACATC
 ACCTTAGTGAGGAAACAAAATGTTCTGCTAGCTTGTTTTCTTCCAGTGCAGTGAATTGGAAGACTTGAC
 TGCAAATACAAACACCCAGGATCCTTTCTTGATTGGTTCTTCAAACAAATGAGGCATCAGTCTGAAAGC
 CAGGGAGTTGGTCTGAGTGACAAGGAATGGTTTCAGATGATGAAGAAAGAGGAACGGGCTTGAAGAAA
 ATAATCAAGAAGAGCAAAGCATGGATTCAAACCTTAGGTGAAGCAGCATCTGGGTGTGAGAGTGAACAAG

CGTCTCTGAAGACTGCTCAGGGCTATCCTCTCAGAGTGACATTTTAACCACTCAGCAGAGGGATACCATG
 CAACATAACCTGATAAAGCTCCAGCAGGAAATGGCTGAACTAGAAGCTGTGTTAGAACAGCATGGGAGCC
 AGCCTTCTAACAGCTACCTTCCATCATAAGTGACTCTTCTGCCCTTGAGGACCTGCGAAATCCAGAACA
 AAGCACATCAGAAAAAGCAGTATTAACCTCACAGAAAAGTAGTGAATACCTATAAGCCAGAATCCAGAA
 GGCTTTCTGCTGACAAGTTTGAGGTGTCTGCAGATAGTTCTACCAGTAAAAATAAAGAACCAGGAGTGG
 AAAGGTCATCCCCTTCTAAATGCCCATCATTAGATGATAGTGGTACATGCACAGTTGCTCTGGGAGTCT
 TCAGAATAGAAACTACCATCTCAAGAGGAGCTCATAAAGGTTGTTGATGTGGAGGACCAACAGCTGGAA
 GAGTCTGGCCACACGATTTGACGGAACATCTTACTTCCAAGGCAAGATCTAGAGGGAACCCCTTACC
 TGAATCTGGAATCAGCCTCTTCTCTGATGACCCTGAATCTGATCCTTCTGAAGCAGAGCCCCAGAGTC
 AGCTCGTGTGGCAACATACCATCTTCAACCTCTGCATTGAAAGTTCCCAATTGAAAGTTGCAGAACT
 GCCCAGAGTCCAGCTGCTGCTCATACTACTGACTGCTGGGTATAATGCAATGGAAGAAAGTGTGAGCA
 GGGAGAAGCCAGAATTGACAGCTTCAACAGAAAGGGTCAACAAAAGAATGTCCATGGTGGTGTCTGGCCT
 GACCCAGAAGATTTATGCTCGTGTACAAGTTGCCAGAAAACACCACATCACTTTAACTAATCTAATT
 ACTGAAGAGACTACTCATGTTGTTATGAAAACAGATGCTGAGTTTGTGTGTAACGGACACTGAAATATT
 TTCTAGGAATTCGGGAGGAAAATGGGTAGTTAGCTATTCTGGGTGACCCAGTCTATTAAGAAAGAAA
 AATGCTGAATGAGCATGATTTTGAAGTCAGAGGAGATGTGGTCAATGGAAGAAACCACCAAGGTCCAAG
 CGAGCAAGAGAATCCCAGGACAGAAAAGATCTTCAGGGGCTAGAAATCTGTTGCTATGGGCCCTTACCA
 ACATGCCACAGATCAACTGAA

AGCGGACCGACGCGTACGCGGCCGCTCGAGCAGAAACTCATCTCAGAAGAGGATCTGGCAGCAAATGATATCC
 TGGATTACAAGGATGACGACGA TAAGGTTTAA

Protein Sequence:

>RC403168 representing NM_007294
 Red=Cloning site Green=Tags(s)

MDLSALRVEEVQNVINAMQKILECPICLLEIKEPSTKCDHIFCKFCMLKLLNQKKGPSQCPLCKNDITK
 RSLQESTRFSQLVEELLKIICAFQLDTGLEANSYNFAKKENNSPEHLKDEVSIQSMGYRNRARLLQS
 EPENPSLQETSLSVQLSNLGTVRTLRKQRIQPQKTSVYIELGSDSSEDTVNKATYCSVGDQELLQITPQ
 GTRDEISLDSAKKAACEFSETDVTNTEHHQPSNNDLNTTEKRAAERHPEKYQGSSVSNLHVPCGNTNHA
 SSLQHENSLLLLTKDRMNVEKAIEFCNKSQKQPLARSQHNWRWAGSKETCNDRRTPSEKVDLNLNDCER
 KEWVKQKLPCESENPRDTEVPWITLNSIQKVNWF SRDELGSDSDHGESESNKAVADVLDVLEVD
 EYSGSSEKIDLLASDPHEALICKSERVHSKSVESNIEDKIFGKTYRKKASLPNL SHVTENLIIGAFVTEP
 QIIQERPLTNLKRKRRTSGLHPEDFIKKADLAVQKTPEMINQGTNQTEQNGQVMNITNSGHENKTKGD
 SIQNEKNPNPIESLEKESAFKTKAEPISSSISNMELELNIHNSKAPKKNRLRRKSSTRHIALELVSRN
 LSPNCTELQIDSCSSSEIKKKKYNQMPVRHSRNLQLMEGKEPATGAKKSNKPNEQTSKRHSDTFPEL
 KL TNAPGSFTKCSNTSELKEFVNPSLPREEKEELETVKVSNNAEDPKDMLSGERVLTQERSVSSSIS
 LVPGTDTYGTQESISLLEVSTLGAKTEPNKCVSQCAAFENPKGLIHGCSKDNRNDETFKYPVPLGHEVNH
 RETSIEMEESELDAQYLQNTFKVSKRQSFAPFSNPGNAEEECATFSAHSGSLKQSPKVTFECEQKEENQ
 GKNESNIKPVTVNITAGFPVVGQKDKPVDNAKCSIKGSRFCLSSQFRGNETGLITPNKHGLLQNPYRI
 PPLFPIKSFVKTKCKKNLLEENFEEHSMSPEREMGNENIPSTVSTISRNNIRENVFKEASSNINEVGSS
 TNEVGSSINEIGSSDENIQAELGRNRGPKLNAMLRLGVLQPEVYKQSLPGSNCKHPEIKKQEEYEEVVQTV
 NTDFSPYLISDNLEQPMGSSHASQVCSETPDDLDDGEIKEDTSAFENDIKESSAVFSKSVQKGE LSRP
 SPFTHTHLAQGYRRGAKKLESSEENLSSEDEELPCFQHLLFGKVNIPISQSTRHSTVATECLSKNTEENL
 LSLKNSLNDCSNQVILAKASQEHHLSEETKCSASLFSQCSELEDLTANTNTQDPFLIGSSKQMRHQSES
 QGVGLSDKELVSDDEERGTGLEENQEEQSMDSNLGAAAGCESETSVSEDCSGLSSQSDILTTQQRDTM
 QHNLIKLQEMAELAVLEQHGSQPSNSYPSIISDSSALEDLRNPEQSTSEKAVLTSQKSSEYPI SQNPE
 GLSADKFEVSADSSTSKNKEPGVERSSPKPSLDDRWMHSCSGSLQNRNYPSEELIKVVDVEEQLE
 ESGPHDLTETSYLPRQLEGTPYLESGISLFSDDPESDPSEDRAPE SARVGNIPSSSALKVPQLKVAES
 AQSPAAAHTTDTAGYNAMEESVSREKPELTASTERNKRMVMVSGLTPEEFMLVYKFKRHHITLNL I
 TEETTHVVMKTADEFVCERTLKYFLGIAGGKVVSYFWVTQSIKERKMLNEHDFEVRGDVVNGRNHQGP
 RARESQRKIFRGLIEICCYGPFNMPTDQLE

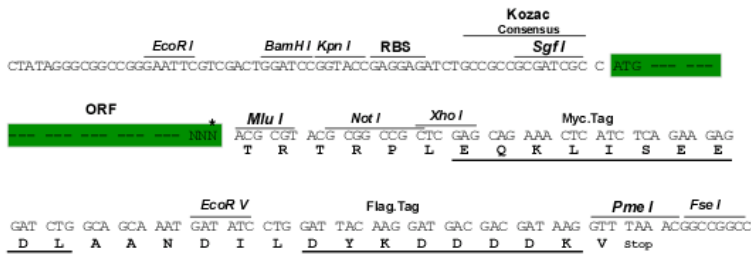
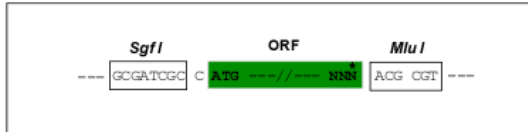
SGPTRRRLQKLI SEEDLAANDILDYKDDDDKV

Restriction Sites:

Cloning Scheme:

Sgfi-MluI

Cloning sites used for ORF Shutting:



* The last codon before the Stop codon of the ORF

OTI Disclaimer:	<p>Due to the inherent nature of this plasmid, standard methods to replicate additional amounts of DNA in E. coli are highly likely to result in mutations and/or rearrangements. Therefore, OriGene does not guarantee the capability to replicate this plasmid DNA. Additional amounts of DNA can be purchased from OriGene with batch-specific, full-sequence verification at a reduced cost. Please contact our customer care team at custsupport@origene.com or by calling 301.340.3188 option 3 for pricing and delivery.</p> <p>The molecular sequence of this clone aligns with the gene accession number as a point of reference only. However, individual transcript sequences of the same gene can differ through naturally occurring variations (e.g. polymorphisms), each with its own valid existence. This clone is substantially in agreement with the reference, but a complete review of all prevailing variants is recommended prior to use. More info</p>
OTI Annotation:	This clone was engineered to express the complete ORF with an expression tag. Expression varies depending on the nature of the gene.
Components:	The ORF clone is ion-exchange column purified and shipped in a 2D barcoded Matrix tube containing 10ug of transfection-ready, dried plasmid DNA (reconstitute with 100 ul of water).
RefSeq:	NP_009225
RefSeq Size:	5343 bp
RefSeq ORF:	5592 bp
Locus ID:	672
Cytogenetics:	17q21.31
Domains:	BRCT, RING
Protein Families:	Druggable Genome, Transcription Factors
Protein Pathways:	Ubiquitin mediated proteolysis
MW:	195.9 kDa

Gene Summary:

This gene encodes a 190 kD nuclear phosphoprotein that plays a role in maintaining genomic stability, and it also acts as a tumor suppressor. The BRCA1 gene contains 22 exons spanning about 110 kb of DNA. The encoded protein combines with other tumor suppressors, DNA damage sensors, and signal transducers to form a large multi-subunit protein complex known as the BRCA1-associated genome surveillance complex (BASC). This gene product associates with RNA polymerase II, and through the C-terminal domain, also interacts with histone deacetylase complexes. This protein thus plays a role in transcription, DNA repair of double-stranded breaks, and recombination. Mutations in this gene are responsible for approximately 40% of inherited breast cancers and more than 80% of inherited breast and ovarian cancers. Alternative splicing plays a role in modulating the subcellular localization and physiological function of this gene. Many alternatively spliced transcript variants, some of which are disease-associated mutations, have been described for this gene, but the full-length natures of only some of these variants has been described. A related pseudogene, which is also located on chromosome 17, has been identified. [provided by RefSeq, May 2020]