

Product datasheet for RC403097

BRCA1 (NM_007294) Human Mutant ORF Clone

Product data:

Product Type:	Mutant ORF Clones
Product Name:	BRCA1 (NM_007294) Human Mutant ORF Clone
Mutation Description:	Q1604X
Affected Codon#:	1604
Affected NT#:	4810
Nucleotide Mutation:	BRCA1 Mutant (Q1604X), Myc-DDK-tagged ORF clone of Homo sapiens breast Cancer, early onset (BRCA1), transcript variant 1 as transfection-ready DNA
Effect:	Breast cancer
Symbol:	BRCA1
Synonyms:	BRCAI; BRCC1; BROVCA1; FANCS; IRIS; PNCA4; PPP1R53; PSCP; RNF53
E. coli Selection:	Kanamycin (25 ug/mL)
Mammalian Cell Selection:	Neomycin
Vector:	pCMV6-Entry (PS100001)
Tag:	Myc-DDK
ACCN:	NM_007294
ORF Size:	4809 bp
Restriction Sites:	Sgfl-Mlul
ORF Nucleotide Sequence:	>RC403097 representing NM_007294 Red=Cloning site Blue=ORF Green=Tags(s)

TTTTGTAATACGACTCACTATAGGGCGCCGGGAATTCGTCGACTGGATCCGGTACCGAGGAGATCTGCC
GCC**GCGATCGCC**

ATGGATTATCTGCTCTTCGCGTTGAAGAAGTACAAAATGTCATTAATGCTATGCAGAAAATCTTAGAGT
GTCCCATCTGTCTGGAGTTGATCAAGGAACCTGTCTCCACAAAGTGTGACCACATATTTTGCAAATTTTG
CATGCTGAAACTTCTCAACCAGAAGAAAGGCCCTTACAGTGTCTTTATGTAAGAATGATATAACCAA
AGGAGCCTACAAGAAAGTACGAGATTTAGTCAACTTGTGAAGAGCTATTGAAAATCATTTGTGCTTTTC
AGCTTGACACAGGTTTGGAGTATGCAAACAGCTATAATTTTGCAAAAAGGAAAATAACTCTCCTGAACA
TCTAAAAGATGAAGTTTCTATCATCAAAGTATGGGCTACAGAAACCGTCCAAAAGACTTCTACAGAGT
GAACCCGAAAATCCTTCTTGCAGGAAACAGTCTCAGTGTCCAACCTCTAACCTTGGAACTGTGAGAA



[View online »](#)

CTCTGAGGACAAAGCAGCGGATACAACCTCAAAAGACGTCTGTCTACATTGAATTGGGATCTGATTCTTC
 TGAAGATACCGTTAATAAGGCAACTTATTGCAGTGTGGGAGATCAAGAATTGTTACAAATCACCCCTCAA
 GGAACCAGGGATGAAATCAGTTTGGATTCTGCAAAAAGGCTGCTTGTGAATTTTCTGAGACGGATGTAA
 CAAACTACTGAACATCATCAACCCAGTAATAATGATTTGAACACCACTGAGAAGCGTGCAGCTGAGAGGCA
 TCCAGAAAAGTATCAGGGTAGTTCTGTTCAAACCTGCATGTGGAGCCATGTGCCACAAATACTCATGCC
 AGCTCATTACAGCATGAGAACAGCAGTTTATTACTCACTAAAGACAGAATGAATGTAGAAAAGGCTGAAT
 TCTGTAATAAAAAGCAAACAGCCTGGCTTAGCAAGGAGCCAAACATAACAGATGGGCTGGAAGTAAGGAAAC
 ATGTAATGATAGGCGGACTCCCAGCACAGAAAAAAGGTAGATCTGAATGCTGATCCCCTGTGTGAGAGA
 AAAGAATGGAATAAGCAGAACTGCCATGCTCAGAGAATCCTAGAGATACTGAAGATGTTCTTGGATAA
 CACTAAATAGCAGCATTAGAAAAGTAAATGAGTGGTTTTCCAGAAGTATGAACTGTTAGGTTCTGATGA
 CTCACATGATGGGGAGTCTGAATCAAATGCCAAAGTAGCTGATGATTGGACGTTCTAAATGAGGTAGAT
 GAATATTCTGGTTCTTCCAGAAAAATAGACTTACTGGCCAGTATCCTCATGAGGCTTTAATATGAAAA
 GTGAAAGAGTTCACTCCAATCAGTAGAGATAATTTGAAGACAAAATTTGGGAAAACCTATCGGAA
 GAAGGCAAGCCTCCCAACTTAAGCCATGTAAGTAAAATCTAATTATAGGAGCATTGTTACTGAGCCA
 CAGATAATACAAGAGCGTCCCCTCACAATAAATTAAGCGTAAAAGGAGACCTACATCAGGCCCTTCATC
 CTGAGGATTTTATCAAGAAAGCAGATTTGGCAGTTCAAAAGACTCCTGAAATGATAAATCAGGGAACATA
 CCAAACGGAGCAGAATGGTCAAGTATGAAATTAATAAGTGGTCAATGAGAATAAAACAAAAGGTGAT
 TCTATTAGAATGAGAAAAATCCTAACCAATAGAATCACTCGAAAAAGAATCTGCTTTCAAACGAAAG
 CTGAACCTATAAGCAGCAGTAAAGCAATATGGAAGTGAATTAATAATCCACAATTCAAAAGCAGCTAA
 AAAGAATAGGCTGAGGAGGAAGTCTTACCAGGCATATTCATGCGCTTGAAGTGTAGTGTAGTGTAGTAAAT
 CTAAGCCACCTAATTGTACTGAATTGCAAAATGATAGTTGTTCTAGCAGTGAAGAGATAAAGAAAAAA
 AGTACAACCAAATGCCAGTCAAGCAGCAGAAAACCTACAACCTATGGAAGGTAAGAAAGTGAAGTGAAGT
 AGCCAAGAGAGTAACAAGCCAAATGAACAGACAAGTAAAAGACATGACAGCGATACTTTCCCAAGCTG
 AAGTTAACAATGCACCTGGTTCTTTTACTAAGTGTTCAAATACCAGTGAAGTAAAGAATTTGTCAATC
 CTAGCCTTCCAAGAGAAGAAAAAGAGAAAAGTAAAGTGTCTAATAATGCTGAAGACCC
 CAAAGATCTCATGTTAAGTGGAGAAAGGTTTTGCAAAGTGAAGATCTGTAGAGAGTAGCAGTATTTCA
 TTGGTACTGTTACTGATTATGGCACTCAGGAAAGTATCTCGTTACTGGAAGTGTAGCAGTCTAGGGAAGG
 CAAAAACAGAACCAAATAAATGTGTGAGTCAAGTGTGCAGCATTGAAAACCCCAAGGACTAATTCATGG
 TTGTTCCAAGATAATAGAAATGACACAGAAGGCTTTAAGTATCCATTGGGACATGAAGTAAACCACAGT
 CGGAAACAAGCATAGAAATGGAAGAAAGTGAAGTGTGCTCAGTATTTGCAGAATACATTCAAGGTTT
 CAAAGCGCCAGTCAATTTGCTCCGTTTTCAAATCCAGGAAATGCAGAAGAGGAATGTGCAACATTCTCTGC
 CCACTCTGGGTCCTTAAAGAAACAAAGTCCAAAAGTCACTTTTGAATGTGAACAAAAGGAAGAAAATCAA
 GGAAAGAATGAGTCTAATATCAAGCCTGTACAGACAGTAAATCACTGCAGGCTTTCTGTGGTTGGTC
 AGAAAGATAAGCCAGTTGATAATGCCAAATGTAGTATCAAAGGAGGCTCTAGGTTTTGTCTATCATCTCA
 GTTCAGAGGCAACGAACTGGACTCATTACTCCAAATAAACATGGACTTTTACAAAACCCATATCGTATA
 CCACCCTTTTCCCATCAAGTCATTTGTTAAACTAAATGTAAGAAAAATCTGCTAGAGGAAAACCTTGG
 AGGAACATTCAATGTACCTGAAAGAGAAATGGGAAATGAGAACATCCAAGTACAGTGAACACAATTAG
 CCGTAATAACATTAGAGAAAAATGTTTTAAAGAAGCCAGCTCAAGCAATATTAATGAAGTAGGTTCCAGT
 ACTAATGAAGTGGCTCCAGTATTAATGAAATAGGTTCCAGTGTGAAAACATTCAAGCAGAAGTGAAGTA
 GAAACAGAGGGCCAAAATGAAATGCTATGCTTAGATTAGGGTTTTGCAACCTGAGGCTATAAAACAAAG
 TCTTCTGGAAGTAATTGTAAGCATCCTGAAATAAAAAAGCAAGAATATGAAGAAGTGTTCAGACTGTT
 AATACAGATTTCTCTCCATATCTGATTTAGATAAATAGAACAGCCTATGGGAAGTGTGATGATCTC
 AGGTTTGTCTGAGACACCTGATGACCTGTTAGATGATGGTGAATAAAGGAAGATACTAGTTTTGCTGA
 AAATGACATTAAGGAAAGTTCTGCTGTTTTAGCAAAAGCGTCCAGAAAGGAGAGCTTAGCAGGAGTCT
 AGCCCTTTCACCCATACACATTTGGCTCAGGGTACCAGAGGGGGCCAAAGAAATAGAGTCTCAGAAG
 AGAACTTACTAGTGAGGATGAAGAGCTCCCTGCTTCCAACACTTGTTATTTGGTAAAGTAAACAATAT
 ACCTTCTCAGTCTACTAGGCATAGCACCGTTGCTACCGAGTGTCTGTCTAAGAACACAGAGGAGAATTTA
 TTATCATTGAAGAATAGCTTAAATGACTGCAGTAACCAGGTAATATTGGCAAAGGCATCTCAGGAACATC
 ACCTTAGTGAGGAAACAAAATGTTCTGCTAGCTTGTTTTCTTCCAGTGCAGTGAATTGGAGACTTGAC
 TGCAAATACAAACACCCAGGATCCTTTCTGATTGGTTCTTCCAAACAAATGAGGCATCAGTCTGAAAGC
 CAGGGAGTTGGTCTGAGTGACAAGGAATGGTTTCAGATGATGAAGAAAGAGGAACGGGCTTGGAAAGAA
 ATAATCAAGAAGAGCAAAGCATGGATTCAAACCTTAGGTGAAGCAGCATCTGGGTGTGAGAGTGAACAAG

CGTCTCTGAAGACTGCTCAGGGCTATCCTCTCAGAGTGACATTTTAACCACTCAGCAGAGGGATACCATG
 CAACATAACCTGATAAAGCTCCAGCAGGAAATGGCTGAACTAGAAGCTGTGTTAGAACAGCATGGGAGCC
 AGCCTTCTAACAGCTACCTTCCATCATAAGTGACTCTTCTGCCCTTGAGGACCTGCGAAATCCAGAACA
 AAGCACATCAGAAAAAGCAGTATTAACCTCACAGAAAAGTAGTGAATACCTATAAGCCAGAATCCAGAA
 GGCCTTCTGCTGACAAGTTTGAGGTGTCTGCAGATAGTTCTACCAGTAAAAATAAAGAACCAGGAGTGG
 AAAGGTCATCCCCTTCTAAATGCCATCATTAGATGATAGTGGTACATGCACAGTTGCTCTGGGAGTCT
 TCAGAATAGAAACTACCATCTCAAGAGGAGCTCATAAAGGTTGTTGATGTGGAGGAGCAACAGCTGGAA
 GAGTCTGGGCCACAGATTTGACGGAACATCTTACTTGCCAAGGCAAGATCTAGAGGGAACCCCTTACC
 TGGAACTGGAATCAGCCTCTTCTCTGATGACCCTGAATCTGATCCTTCTGAAGCAGAGCCCCAGAGTC
 AGCTCGTGTGGCAACATACCATCTTCAACCTCTGCATTGAAAGTTCCC

AGCGGACCGACGCGTACGCGGCCGCTCGAGCAGAAACTCATCTCAGAAGAGGATCTGGCAGCAAATGATATCC
 TGGATTACAAGGATGACGACGA TAAGGTTTAA

Protein Sequence:

>RC403097 representing NM_007294
 Red=Cloning site Green=Tags(s)

MDLSALRVEEVQNVINAMQKILECPICLELIKEPVSTKCDHIFCKFCMLKLLNQKKGPSQCPLCKNDITK
 RSLQESTRFSQLVEELLKIICAFQLDTGLEANSYNFAKKENNSPEHLKDEVSI IQSMGYRNRARLLQS
 EPENPSLQETSLSVQLSNLGTVRTLRKQRIQPQKTSVYIELGSDSSEDVTKATYCSVGDQELLQITPQ
 GTRDEISLDSAKKAACEFSETDVTNTEHHQPSNNDLNTTEKRAAERHPEKYQGSSVSNLHVPECGTNTHA
 SSLQHENSLLLTKDRMNVKAEFCNKSKQPGLARSQHNRWAGSKETCNDRRTPSTEKKVDLADPLCER
 KEWVKQLPCSENPRDTEVPWITLNSSIQKVNEWFSRSEDELLGSDSDHGESESENAKVADVLDVLEVD
 EYSGSSEKIDLLASDPHEALICKSERVHKSVEENIEDKIFGKTYRKKASLPNL SHVTENLIIGAFVTEP
 QIIQERPLTNKLRKRRTSGLHPEDFIKKADLAVQKTPEMINQGTNQTQNGQVMNITNSGHENKTKGD
 SIQNEKNPNPIESLEKESAFKTKAEPISSSISNMELELNIHNSKAPKKNRLRRKSSTRHIALELVVSRN
 LSPNCTELQIDSCSSSEIKKKKYNQMPVHRSLNLQMEGKEPATGAKKSNKPNEQTSKRHDSDFPEL
 KLTNAPGSFTKCSNTSELKEFVNPSLPREEKEELETVKVSNNAEDPKDMLSGERVQTERSVESSIS
 LVPGTDYGTQESISLLEVSTLGKAKTEPNKCVSQCAAFENPKGLIHGCSKDNRNDEGFKYPLGHEVNHS
 RETSIEMEESELDAQYLQNTFKVSKRQSFAPFSNPGNAEEECATFSAHSGSLKKQSPKVFCEQEKEENQ
 GKNESNIKPVQTVNITAGFPVVGQKDKPVDNAKCSIKGSRFCLSSQFRGNETGLITPNKHGLLQNPYRI
 PPLFPIKSFVKTKCKNLLLEENFEEHSMSPEREMGNENIPSTVSTISRNNIRENVFKEASSNINEVGSS
 TNEVGSSINEIGSSDENIQAELGRNRGPKLNAMLRLGVLQPEVYKQSLPGSNCKHPEIKKQYEEVVQTV
 NTDFSPYLISDNLEQPMGSSSHASQVCSETPDDLDDGEIKEDTSFAENDIKESSAVFSKSVQKGE LSRP
 SPFTHTHLAQGYRRGAKKLESSEENLSSEDEELPCFQHLLFGKVNIPSQSTRHSTVATECLSKNTEENL
 LSLKNSLNDCSNQVILAKASQEHHLSEETKCSASLFSQCSELEDLTANTNTQDPFLIGSSKQMRHQSES
 QGVGLSDKELVSDDEERGTGLENNQEEQSMDSNLGEAASGCESETSVSEDCSGLSSQSDILTTQQRDTM
 QHNLIKLQQEMAELEAVLEQHGSQPSNSYPSIISDSSALEDLRNPEQSTSEKAVLTSQKSSEYPI SQNPE
 GLSADKFEVSADSSTSKNKEPGVERSSPSKCPSLDDRWMHSCGSLQNRNYPSEELIKVVDVEEQLE
 ESGPHDLTETSYLPRQDLEGTPYLESGISLFSDDPESDPSEDRAPE SARVGNIPSSTSALKVP

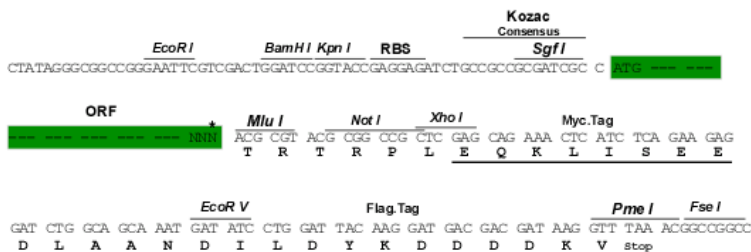
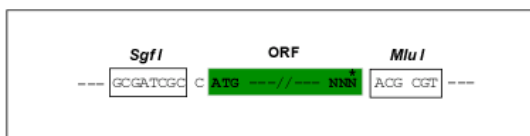
SGPTRRRL**EQKLISEEDLAANDILDYKDDDDK**V

Restriction Sites:

Sgfl-MluI

Cloning Scheme:

Cloning sites used for ORF Shutting:



* The last codon before the Stop codon of the ORF

OTI Disclaimer:

Due to the inherent nature of this plasmid, standard methods to replicate additional amounts of DNA in *E. coli* are highly likely to result in mutations and/or rearrangements. Therefore, OriGene does not guarantee the capability to replicate this plasmid DNA. Additional amounts of DNA can be purchased from OriGene with batch-specific, full-sequence verification at a reduced cost. Please contact our customer care team at custsupport@origene.com or by calling 301.340.3188 option 3 for pricing and delivery.

The molecular sequence of this clone aligns with the gene accession number as a point of reference only. However, individual transcript sequences of the same gene can differ through naturally occurring variations (e.g. polymorphisms), each with its own valid existence. This clone is substantially in agreement with the reference, but a complete review of all prevailing variants is recommended prior to use. [More info](#)

OTI Annotation:

This clone was engineered to express the complete ORF with an expression tag. Expression varies depending on the nature of the gene.

Components:

The ORF clone is ion-exchange column purified and shipped in a 2D barcoded Matrix tube containing 10ug of transfection-ready, dried plasmid DNA (reconstitute with 100 ul of water).

RefSeq:

[NP_009225](#)

RefSeq Size:

4809 bp

RefSeq ORF:	5592 bp
Locus ID:	672
Cytogenetics:	17q21.31
Domains:	BRCT, RING
Protein Families:	Druggable Genome, Transcription Factors
Protein Pathways:	Ubiquitin mediated proteolysis
MW:	176.3 kDa
Gene Summary:	<p>This gene encodes a 190 kD nuclear phosphoprotein that plays a role in maintaining genomic stability, and it also acts as a tumor suppressor. The BRCA1 gene contains 22 exons spanning about 110 kb of DNA. The encoded protein combines with other tumor suppressors, DNA damage sensors, and signal transducers to form a large multi-subunit protein complex known as the BRCA1-associated genome surveillance complex (BASC). This gene product associates with RNA polymerase II, and through the C-terminal domain, also interacts with histone deacetylase complexes. This protein thus plays a role in transcription, DNA repair of double-stranded breaks, and recombination. Mutations in this gene are responsible for approximately 40% of inherited breast cancers and more than 80% of inherited breast and ovarian cancers. Alternative splicing plays a role in modulating the subcellular localization and physiological function of this gene. Many alternatively spliced transcript variants, some of which are disease-associated mutations, have been described for this gene, but the full-length natures of only some of these variants has been described. A related pseudogene, which is also located on chromosome 17, has been identified. [provided by RefSeq, May 2020]</p>