

Product datasheet for RC403075

BRCA1 (NM_007294) Human Mutant ORF Clone

Product data:

Product Type:	Mutant ORF Clones
Product Name:	BRCA1 (NM_007294) Human Mutant ORF Clone
Mutation Description:	R1443X
Affected Codon#:	1443
Affected NT#:	4327
Nucleotide Mutation:	BRCA1 Mutant (R1443X), Myc-DDK-tagged ORF clone of Homo sapiens breast Cancer, early onset (BRCA1), transcript variant 1 as transfection-ready DNA
Effect:	Breast cancer
Symbol:	BRCA1
Synonyms:	BRCAI; BRCC1; BROVCA1; FANCS; IRIS; PNCA4; PPP1R53; PSCP; RNF53
E. coli Selection:	Kanamycin (25 ug/mL)
Mammalian Cell Selection:	Neomycin
Vector:	pCMV6-Entry (PS100001)
Tag:	Myc-DDK
ACCN:	NM_007294
ORF Size:	4326 bp
Restriction Sites:	SgfI-MluI
ORF Nucleotide Sequence:	>RC403075 representing NM_007294 Red=Cloning site Blue=ORF Green=Tags(s)

TTTTGTAATACGACTCACTATAGGGCGCCGGGAATTCGTCGACTGGATCCGGTACCGAGGAGATCTGCC
GCC**GCGATCGCC**

ATGGATTATCTGCTCTTCGCGTTGAAGAAGTACAAAATGTCATTAATGCTATGCAGAAAATCTTAGAGT
GTCCCATCTGTCTGGAGTTGATCAAGGAACCTGTCTCCACAAAGTGTGACCACATATTTTGCAAATTTTG
CATGCTGAAACTTCTCAACCAGAAGAAAGGGCCTTCACAGTGTCTTTATGTAAGAATGATATAACCAA
AGGAGCCTACAAGAAAGTACGAGATTTAGTCAACTTGTGAAGAGCTATTGAAAATCATTGTGCTTTTC
AGCTTGACACAGGTTTGGAGTATGCAACAGCTATAATTTTGCAAAAAGGAAAATAACTCTCCTGAACA
TCTAAAAGATGAAGTTTCTATCATCAAAGTATGGGCTACAGAAACCGTCCAAAAGACTTCTACAGAGT
GAACCCGAAAATCCTTCTTGCAGGAAACAGTCTCAGTGTCCAACCTCTAACCTTGGAACTGTGAGAA



[View online »](#)

CTCTGAGGACAAAGCAGCGGATACAACCTCAAAAGACGTCTGTCTACATTGAATTGGGATCTGATTCTTC
 TGAAGATACCGTTAATAAGGCAACTTATTGCAGTGTGGGAGATCAAGAATTGTTACAAATCACCCCTCAA
 GGAACCAGGGATGAAATCAGTTTGGATTCTGCAAAAAGGCTGCTTGTGAATTTCTGAGACGGATGTAA
 CAAACTACTGAACATCATCAACCCAGTAATAATGATTTGAACACCACTGAGAAGCGTGCAGCTGAGAGGCA
 TCCAGAAAAGTATCAGGGTAGTTCTGTTCAAACCTGCATGTGGAGCCATGTGCCACAAATACTCATGCC
 AGCTCATTACAGCATGAGAACAGCAGTTTATTACTCACTAAAGACAGAATGAATGTAGAAAAGGCTGAAT
 TCTGTAATAAAAAGCAAACAGCCTGGCTTAGCAAGGAGCCAACATAACAGATGGGCTGGAAGTAAGGAAAC
 ATGTAATGATAGGCGGACTCCCAGCACAGAAAAAAGGTAGATCTGAATGCTGATCCCCTGTGTGAGAGA
 AAAGAATGGAATAAGCAGAACTGCCATGCTCAGAGAATCCTAGAGATACTGAAGATGTTCTTGGATAA
 CACTAAATAGCAGCATTAGAAAAGTAAATGAGTGGTTTTCCAGAAGTATGAACTGTTAGGTTCTGATGA
 CTCACATGATGGGGAGTCTGAATCAAATGCCAAAGTAGCTGATGATTGGACGTTCTAAATGAGGTAGAT
 GAATATTCTGGTTCTTCCAGAGAAAATAGACTTACTGGCCAGTATCCTCATGAGGCTTTAATATGAAAA
 GTGAAAGAGTTCACTCCAATCAGTAGAGATAATTTGAAGACAAAATTTGGGAAAACCTATCGGAA
 GAAGGCAAGCCTCCCAACTTAAGCCATGTAAGTAAAATCTAATTATAGGAGCATTGTTACTGAGCCA
 CAGATAATACAAGAGCGTCCCCTCACAATAAATTAAGCGTAAAAGGAGACCTACATCAGGCCCTTCATC
 CTGAGGATTTTATCAAGAAAGCAGATTTGGCAGTTCAAAAGACTCCTGAAATGATAAATCAGGGAACATA
 CCAAACGGAGCAGAATGGTCAAGTATGAAATTAATAAGTGGTCAATGAGAATAAAACAAAAGGTGAT
 TCTATTAGAATGAGAAAAATCCTAACCAATAGAATCACTCGAAAAAGAATCTGCTTTCAAACGAAAG
 CTGAACCTATAAGCAGCAGTAAAGCAATATGGAAGTGAATTAATAATCCACAATTCAAAAGCAGCTAA
 AAAGAATAGGCTGAGGAGGAAGTCTTACCAGGCATATTCATGCGCTTGAAGTGTAGTGTAGTGTAGTAAAT
 CTAAGCCACCTAATTGTACTGAATGCAAATGATAGTTGTTCTAGCAGTGAAGAGATAAAGAAAAAA
 AGTACAACCAAATGCCAGTCAAGCAGCAGAAAACCTACAACCTATGGAAGGTAAGAAAGTGAAGTGAAGT
 AGCCAAGAGAGTAACAAGCCAAATGAACAGACAAGTAAAAGACATGACAGCGATACTTTCCCAAGCTG
 AAGTTAAACAAATGCACCTGGTTCTTTTACTAAGTGTTCAAATACCAAGTGAAGTAAAGAATTTGTCAATC
 CTAGCCTTCCAAGAGAAGAAAAAGAGAAAACACTAGAAAACAGTTAAAGTGTCTAATAATGCTGAAGACCC
 CAAAGATCTCATGTTAAGTGGAGAAAGGTTTTGCAAACCTGAAAGATCTGTAGAGAGTAGCAGTATTTCA
 TTGGTACTGTTACTGATTATGGCACTCAGGAAAGTATCTCGTTACTGGAAGTTAGCACTCTAGGGAAGG
 CAAAAACAGAACCAAATAAATGTGTGAGTCAAGTGTGCAGCATTGAAAACCCCAAGGGACTAATTCATGG
 TTGTTCCAAAGATAATAGAAATGACACAGAAGGCTTTAAGTATCCATTGGGACATGAAGTAAACCACAGT
 CGGAAACAAGCATAGAAATGGAAGAAAGTGAAGTGTGCTCAGTATTTGCAGAATACATTCAAGGTTT
 CAAAGCGCCAGTCAATTTGCTCCGTTTTCAAATCCAGGAAATGCAGAAGAGGAATGTGCAACATTCTCTGC
 CCACTCTGGGTCTTAAAGAAACAAAGTCCAAAAGTCACTTTTGAATGTGAACAAAAGGAAGAAAATCAA
 GGAAAGAATGAGTCTAATATCAAGCCTGTACAGACAGTAAATCACTGCAGGCTTTCTGTGGTTGGTC
 AGAAAGATAAGCCAGTTGATAATGCCAAATGTAGTATCAAAGGAGGCTCTAGGTTTTGTCTATCATCTCA
 GTTCAGAGGCAACGAACTGGACTCATTACTCCAAATAAACATGGACTTTTACAAAACCCATATCGTATA
 CCACCCTTTTCCCATCAAGTCATTTGTTAAAATAAATGTAAGAAAAATCTGCTAGAGGAAAACCTTGG
 AGGAACATTCAATGTACCTGAAAGAGAAATGGGAAATGAGAACATTCAGTACAGTGAACACAATTAG
 CCGTAATAACATTAGAGAAAATGTTTTAAAGAAGCCAGCTCAAGCAATTAATGAAGTAGGTTCCAGT
 ACTAATGAAGTGGCTCCAGTATTAATGAAATAGGTTCCAGTGTGAAAACATTCAAGCAGAAGTGAAGT
 GAAACAGAGGGCCAAAATGAAATGCTATGCTTAGATTAGGGTTTTGCAACCTGAGGCTATAAAACAAAG
 TCTTCTGGAAGTAATTGTAAGCATCCTGAAATAAAAAAGCAAGAATATGAAGAAGTGTTCAGACTGTT
 AATACAGATTTCTCTCCATATCTGATTTAGATAAATAGAACAGCCTATGGGAAGTGTGATGATCTC
 AGGTTTGTCTGAGACACCTGATGACCTGTTAGATGATGGTGAATAAAGGAAGATACTAGTTTTGCTGA
 AAATGACATTAAGGAAAGTTCTGCTGTTTTAGCAAAGCGTCCAGAAAGGAGAGCTTAGCAGGAGTCTC
 AGCCCTTTCACCCATACACATTTGGCTCAGGGTACCAGAGGGGCAAGAAATAGAGTCTCAGAAG
 AGAACTTACTAGTGAGGATGAAGAGCTCCCTGCTTCCAACACTTGTATTTGGTAAAGTAAACAATAT
 ACCTTCTCAGTCTACTAGGCATAGCACCGTTGCTACCGAGTGTCTGTCTAAGAACACAGAGGAGAATTTA
 TTATCATTGAAGAATAGCTTAAATGACTGCAGTAACCAGGTAATATTGGCAAAGGCATCTCAGGAACATC
 ACCTTAGTGAGGAAACAAAATGTTCTGCTAGCTTGTCTTCTCACAGTGCAGTGAATTGGAAGACTTGAC
 TGCAAATACAAACACCCAGGATCCTTTCTGATTGGTTCTTCAAACAAATGAGGCATCAGTCTGAAAGC
 CAGGGAGTTGGTCTGAGTGACAAGGAATGGTTTCAGATGATGAAGAAAGAGGAACGGGCTTGAAGAAA
 ATAATCAAGAAGAGCAAAGCATGGATTCAAACCTTAGGTGAAGCAGCATCTGGGTGTGAGAGTGAACAAG

CGTCTCTGAAGACTGCTCAGGGCTATCCTCTCAGAGTGACATTTTAACCACTCAGCAGAGGGATACCATG
 CAACATAACCTGATAAAGCTCCAGCAGGAAATGGCTGAACTAGAAGCTGTGTTAGAACAGCATGGGAGCC
 AGCCTTCTAACAGCTACCTTCCATCATAAGTGACTCTTCTGCCCTTGAGGACCTG

AGCGGACCGACGCGTACGCGGCCGCTCGAGCAGAAACTCATCTCAGAAGAGGATCTGGCAGCAAATGATATCC
 TGGATTACAAGGATGACGACGA TAAGGTTTAA

Protein Sequence:

>RC403075 representing NM_007294
 Red=Cloning site Green=Tags(s)

MDLSALRVEEVQNVINAMQKILECPICLLEIKEPVSTKCDHIFCKFCMLKLLNQKKGPSQCPLCKNDITK
 RSLQESTRFSQLVEELKIIICAFQLDTGLEYSYFNFAKKENNSPEHLKDEVSI IQSMGYRNRARLLQS
 EPENPSLQETSLSVQLSNLGTVRTLRKQRIQPQKTSVYIELGSDSSEDTVNKATYCSVGDQELLQITPQ
 GTRDEISLDSAKKAACEFSETDVTNTEHHQPSNNDLNTTEKRAAERHPEKYQGSSVSNLHVPCGTNTHA
 SSLQHENSLLLLTKDRMNVKEAEFCNKSKQPGLARSQHNRWAGSKETCNDRRTPSTEEKVDLNADPLCER
 KEWKNQKLPSENPRDTEVPWITLNSSIQKVNWF SRDEL LGSDSDHGESESNKAVDVLVDLNEVD
 EYSGSSEKIDLLASDPHEALICKSERVHKSVE SNIEDKIFGKTYRKKASLPNL SHVTENLIIGAFVTEP
 QIIQERPLTNKLRKRPTSLGLHPEDFIKKADLAVQKTPEMINQGTNQT EQNGQVMNITNSGHENKTKGD
 SIQNEKNPNPIESLEKESAFKTAEPISSSISNMELELNIHNSKAPKKNRLRRKSSTRHIALELVSRN
 LSPNCTELQIDSCSSSEI KKKKYNQMPVHRNRLQLMEGKEPATGAKKSNKPNEQTSKRHDSDTFPEL
 KLTNAPGSFTKCSNTSELKEFVNPSLPREEKEELETVKVSNNAE DPKDMLSGERVLQTERSVESSSIS
 LVPGTDYGTQESISLLEVSTLGAKTEPNKCVSQCAAFENPKGLIHGCSKDNRNDTEGFKYPLGHEVNH
 RETSIEMEESELDAQYLQNTFKVSKRQSFAPF SNPNAEEECATFSAHSGSLKKQSPKVTFECEQKEENQ
 GKNESNIKPVTYNITAGFPVVGQKDKPVDNAKCSIKGGRFCLSSQFRGNETGLITPNKHGLLQNPYRI
 PPLFPKISFVKTKCKKNLLEENFEHSMSPEREMGNENIPSTVSTISRNNIRENVFKEASSSININEVGSS
 TNEVGSSINEIGSSDENIQAELGRNRGPKLNAMLRLGVLQPEVYKQSLPGSNCKHPEIKKQEYEEVVQTV
 NTDFSPYLISDNLEQPMGSSHASQVCSETPDDLDDGEIKEDTSAENDIKESSAVF SKSVQK GELSRSP
 SPFTHTHLAQGYRRGAKKLESSEENLSEDEELPCFQHLLFGKVNIPSQSTRHSTVATECLSKNTEENL
 LSLKNSLNDCSNQVILAKASQEHHLSEETKCSASLFSQCSELEDLTANTNTQDPFLIGSSKQMRHQSES
 QGVGLSDKELVSDDEERGTGLEENNQEEQSMDSNLGEAASGCESETSVSEDCSGLSSQSDILTTQQRDTM
 QHNLIKLQEQEMAELEAVLEQHGSQPSNSYPSIISDSSALEDL

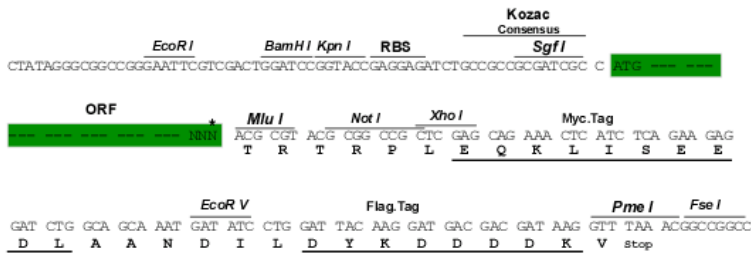
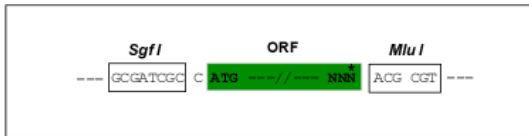
SGPTRRRLRLEQKLI SEEDLAANDILDYKDDDDKV

Restriction Sites:

SgfI-MluI

Cloning Scheme:

Cloning sites used for ORF Shuttling:



* The last codon before the Stop codon of the ORF

OTI Disclaimer: Due to the inherent nature of this plasmid, standard methods to replicate additional amounts of DNA in E. coli are highly likely to result in mutations and/or rearrangements. Therefore, OriGene does not guarantee the capability to replicate this plasmid DNA. Additional amounts of DNA can be purchased from OriGene with batch-specific, full-sequence verification at a reduced cost. Please contact our customer care team at custsupport@origene.com or by calling 301.340.3188 option 3 for pricing and delivery.

The molecular sequence of this clone aligns with the gene accession number as a point of reference only. However, individual transcript sequences of the same gene can differ through naturally occurring variations (e.g. polymorphisms), each with its own valid existence. This clone is substantially in agreement with the reference, but a complete review of all prevailing variants is recommended prior to use. [More info](#)

OTI Annotation: This clone was engineered to express the complete ORF with an expression tag. Expression varies depending on the nature of the gene.

Components: The ORF clone is ion-exchange column purified and shipped in a 2D barcoded Matrix tube containing 10ug of transfection-ready, dried plasmid DNA (reconstitute with 100 ul of water).

Note: Plasmids are not sterile. For experiments where strict sterility is required, filtration with 0.22um filter is required.

RefSeq: [NP_009225](#)

RefSeq Size: 4326 bp

RefSeq ORF: 5592 bp

Locus ID: 672

Cytogenetics: 17q21.31

Domains: BRCT, RING

Protein Families: Druggable Genome, Transcription Factors

Protein Pathways: Ubiquitin mediated proteolysis

MW: 158.6 kDa

Gene Summary: This gene encodes a 190 kD nuclear phosphoprotein that plays a role in maintaining genomic stability, and it also acts as a tumor suppressor. The BRCA1 gene contains 22 exons spanning about 110 kb of DNA. The encoded protein combines with other tumor suppressors, DNA damage sensors, and signal transducers to form a large multi-subunit protein complex known as the BRCA1-associated genome surveillance complex (BASC). This gene product associates with RNA polymerase II, and through the C-terminal domain, also interacts with histone deacetylase complexes. This protein thus plays a role in transcription, DNA repair of double-stranded breaks, and recombination. Mutations in this gene are responsible for approximately 40% of inherited breast cancers and more than 80% of inherited breast and ovarian cancers. Alternative splicing plays a role in modulating the subcellular localization and physiological function of this gene. Many alternatively spliced transcript variants, some of which are disease-associated mutations, have been described for this gene, but the full-length natures of only some of these variants has been described. A related pseudogene, which is also located on chromosome 17, has been identified. [provided by RefSeq, May 2020]