

Product datasheet for **RC403057**

BRCA1 (NM_007294) Human Mutant ORF Clone

Product data:

Product Type:	Mutant ORF Clones
Product Name:	BRCA1 (NM_007294) Human Mutant ORF Clone
Mutation Description:	Q1313X
Affected Codon#:	1313
Affected NT#:	3937
Nucleotide Mutation:	BRCA1 Mutant (Q1313X), Myc-DDK-tagged ORF clone of Homo sapiens breast Cancer, early onset (BRCA1), transcript variant 1 as transfection-ready DNA
Effect:	Breast cancer
Symbol:	BRCA1
Synonyms:	BRCAI; BRCC1; BROVCA1; FANCS; IRIS; PNCA4; PPP1R53; PSCP; RNF53
E. coli Selection:	Kanamycin (25 ug/mL)
Mammalian Cell Selection:	Neomycin
Vector:	pCMV6-Entry (PS100001)
Tag:	Myc-DDK
ACCN:	NM_007294
ORF Size:	3936 bp
Restriction Sites:	Sgfl-Mlul
ORF Nucleotide Sequence:	>RC403057 representing NM_007294 Red=Cloning site Blue=ORF Green=Tags(s)

TTTTGTAATACGACTCACTATAGGGCGCCGGGAATTCGTCGACTGGATCCGGTACCGAGGAGATCTGCC
GCC**GCGATCGCC**

ATGGATTATCTGCTCTTCGCGTTGAAGAAGTACAAAATGTCATTAATGCTATGCAGAAAATCTTAGAGT
GTCCCATCTGTCTGGAGTTGATCAAGGAACCTGTCTCCACAAAGTGTGACCACATATTTTGCAAATTTTG
CATGCTGAAACTTCTCAACCAGAAGAAAGGGCCTTCACAGTGTCTTTATGTAAGAATGATATAACCAA
AGGAGCCTACAAGAAAGTACGAGATTTAGTCAACTTGTGGAAGAGCTATTGAAAATCATTTGTGCTTTTC
AGCTTGACACAGGTTTGGAGTATGCAAACAGCTATAATTTTGCAAAAAGGAAAATAACTCTCCTGAACA
TCTAAAAGATGAAGTTTCTATCATCAAAGTATGGGCTACAGAAACCGTCCAAAAGACTTCTACAGAGT
GAACCCGAAAATCCTTCTTGCAGGAAACAGTCTCAGTGTCCAACCTCTAACCTTGGAACTGTGAGAA



[View online »](#)

CTCTGAGGACAAAGCAGCGGATACAACCTCAAAAGACGTCTGTCTACATTGAATTGGGATCTGATTCTTC
TGAAGATACCGTTAATAAGGCAACTTATTGCAGTGTGGGAGATCAAGAATTGTTACAAATCACCCCTCAA
GGAACCAGGGATGAAATCAGTTTGGATTCTGCAAAAAAGGCTGCTTGTGAATTTTCTGAGACGGATGTA
CAAATACTGAACATCATCAACCCAGTAATAATGATTTGAACACCACTGAGAAGCGTGCAGCTGAGAGGCA
TCCAGAAAAGTATCAGGGTAGTTCTGTTCAAACCTGCATGTGGAGCCATGTGCCACAAATACTCATGCC
AGCTCATTACAGCATGAGAACAGCAGTTTATTACTCACTAAAGACAGAATGAATGTAGAAAAGGCTGAAT
TCTGTAATAAAAAGCAAACAGCCTGGCTTAGCAAGGAGCCAAACATACAGATGGGCTGGAAGTAAGGAAAC
ATGTAATGATAGGCGGACTCCCAGCACAGAAAAAAGGTAGATCTGAATGCTGATCCCCTGTGTGAGAGA
AAAGAATGGAATAAGCAGAACTGCCATGCTCAGAGAATCCTAGAGATACTGAAGATGTTCTTGGATAA
CACTAAATAGCAGCATTAGAAAAGTAAATGAGTGGTTTTCCAGAAGTGAAGTGTAGGTTCTGATGA
CTCACATGATGGGGAGTCTGAATCAAATGCCAAAGTAGCTGATGATTGGACGTTCTAAATGAGGTAGAT
GAATATTCTGGTTCTTCCAGAAAAATAGACTTACTGGCCAGTGCCTCATGAGGCTTTAATATGAAAA
GTGAAAGAGTTCACTCCAATCAGTAGAGATAATATTGAAGACAAAATTTGGGAAAACCTATCGGAA
GAAGGCAAGCCTCCCAACTTAAGCCATGTAAGTAAAATCTAATTATAGGAGCATTGTTACTGAGCCA
CAGATAATACAAGAGCGTCCCCTCACAATAAATTAAGCGTAAAAGGAGACCTACATCAGGCCCTTCATC
CTGAGGATTTTATCAAGAAAGCAGATTTGGCAGTTCAAAAGACTCCTGAAATGATAAATCAGGAACTAA
CCAAACGGAGCAGAATGGTCAAGTGAATATTACTAATAGTGGTCATGAGAATAAAACAAAAGGTGAT
TCTATTAGAATGAGAAAAATCCTAACCAATAGAATCACTCGAAAAAGAATCTGCTTTCAAACGAAAG
CTGAACCTATAAGCAGCAGTAAAGCAATATGGAAGTGAATTAATAATCCACAATTCAAAAGCAGCTAA
AAAGAATAGGCTGAGGAGGAAGTCTTACCAGGCATATTGATGCGCTGAACTAGTAGTCAGTAGAAAAT
CTAAGCCACCTAATTGACTGAATTGCAAAATGATAGTTGTTCTAGCAGTGAAGAGATAAAGAAAAAA
AGTACAACCAAATGCCAGTCAAGCAGCAGAAAACCTACAACCTATGGAAGGTAAGAAAGTGAAGTGA
AGCCAAAGAGTAACAAGCCAAATGAACAGACAAGTAAAAGACATGACAGCGATACTTTCCAGAGCTG
AAGTTAACAAAATGCACCTGGTTCTTTTACTAAGTGTTCAAATACCAGTGAACCTAAAGAATTTGCAATC
CTAGCCTTCCAAGAGAAGAAAAAGAGAAAACCTAGAAAACAGTTAAAGTGTCTAATAATGCTGAAGACCC
CAAAGATCTCATGTTAAGTGGAGAAAGGTTTTGCAAACCTGAAAGATCTGTAGAGAGTAGCAGTATTTC
TTGGTACTGTTACTGATTATGGCACTCAGGAAAGTATCTCGTTACTGGAAGTTAGCACTCTAGGGAAGG
CAAAAACAGAACCAAATAAATGTGTGAGTCAAGTGTGCAGCATTGAAAACCCCAAGGACTAATTCATGG
TTGTTCCAAAGATAATAGAAATGACACAGAAGGCTTTAAGTATCCATTGGGACATGAAGTAAACACAGT
CGGAAACAAGCATAGAAATGGAAGAAAGTGAACCTGATGCTCAGTATTTGCAGAATACATTCAAGGTTT
CAAAGCGCAGTCAATTTGCTCCGTTTTCAAATCCAGGAAATGCAGAAGAGGAATGTGCAACATTCTCTGC
CCTCTGGGTCTTAAAGAAACAAAGTCCAAAAGTCACTTTTGAATGTGAACAAAAGGAAGAAAATCAA
GGAAAGAATGAGTCTAATATCAAGCCTGTACAGACAGTTAATATCACTGCAGGCTTTCTGTGGTTGGTC
AGAAAGATAAGCCAGTTGATAATGCCAAATGTAGTATCAAAGGAGGCTCTAGGTTTTGTCTATCATCTCA
GTTCAGAGGCAACGAACTGGACTCATTACTCCAAATAAACATGGACTTTTACAAAACCCATATCGTATA
CCACCCTTTTCCCATCAAGTCATTTGTTAAAATAAATGTAAGAAAAATCTGCTAGAGGAAAACCTTG
AGGAACATTCAATGTACCTGAAAGAGAAATGGGAAATGAGAACATTCAGTACAGTGAACACAATTAG
CCGTAATAACATTAGAGAAAATGTTTTAAAGAAGCCAGCTCAAGCAATATTAATGAAGTAGGTTCCAGT
ACTAATGAAGTGGCTCCAGTATTAATGAAATAGGTTCCAGTGTGAAAACATTCAAGCAGAAGTGAAGTA
GAAACAGAGGGCCAAAATGAAATGCTATGCTTAGATTAGGGTTTTGCAACCTGAGGCTATAAAACAAAG
TCTTCTGGAAGTAATTGTAAGCATCCTGAAATAAAAAAGCAAGAATATGAAGAAGTAGTTCAGACTGTT
AATACAGATTTCTCTCCATATCTGATTTAGATAAATAGAACAGCCTATGGGAAGTAGTCATGCATCTC
AGGTTTGTCTGAGACACCTGATGACCTGTTAGATGATGGTGAATAAAGGAAGATACTAGTTTTGCTGA
AAATGACATTAAGGAAAGTTCTGCTGTTTTAGCAAAAGCGTCCAGAAAGGAGAGCTTAGCAGGAGTCTC
AGCCCTTTCACCCATACACATTTGGCTCAGGGTACCAGAGGGGCCAAGAAATAGAGTCTCAGAAG
AGAACTTACTAGTGAAGATGAAGAGCTCCCTGCTTCCAACACTTGTTATTTGGTAAAGTAAACAATAT
ACTTTCTAGTCTACTAGGCATAGCACCCTGCTACCGAGTGTCTGTCTAAGAACACAGAGGAGAATTTA
TTATCATTGAAGAATAGCTTAAATGACTGCAGTAACCAGGTAATATTGGCAAAGGCATCTCAGGAACATC
ACCTTAGTGAGGAAACAAAATGTTCTGCTAGCTTGTCTTCTCACAGTGCAGTGAATTGGAAGACTTGAC
TGCAAATACAAACACC

AGCGGACCGACGCGTACGCGGCCGCTCGAGCAGAACTCATCTCAGAAGAGGATCTGGCAGCAAATGATATCC

TGGATTACAAGGATGACGACGA TAAGGTTTAA

Protein Sequence:

>RC403057 representing NM_007294

Red=Cloning site Green=Tags(s)

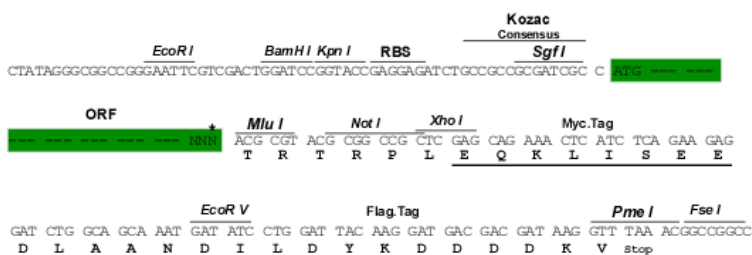
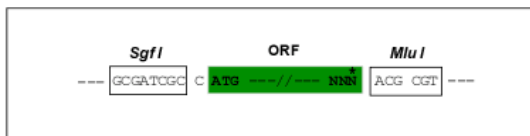
MDLSALRVEEVQNVINAMQKILECPICLELIIKEPVSTKCDHIFCKFCMLKLLNQKKGPSQCPLCKNDITK
RSLQESTRFSQSLVEELKIICAFQLDTGLEYSYNFAKKENNSPEHLKDEVSIIQSMGYRNRARLLQS
EPENPSLQETSLSVQLSNLGTVRTLRKQRIQPQKTSVYIELGSDSSEDTVNKATYCSVDQELLQITPQ
GTRDEISLDSAKKAACEFSETDVTNTEHHQPSNNDLNTTEKRAAERHPEKYQGSSVSNLHVPCGTNTHA
SSLQHENSLLLTKDRMNVEKAEFCNKSQKQPLARSQHNRWAGSKETCNDRRTPSTEKKVDLADPLCER
KEWNKQKLPKPCSENPRDTEVPWITLNSSIQKVNEWFSRDELLGSDSDHGESESNAKVADVLDVLEVD
EYSGSSEKIDLLASDPHEALICKSERVHKS SVESNIEDKIFGKTYRKKASLPNL SHVTENLIIGAFVTEP
QIIQERPLTNLKRKRRTSGLHPEDFIKKADLAVQKTPEMINQGTNQTEQNGQVMNITNSGHENKTKGD
SIQNEKNPNPIESLEKESAFKTAEPISISSISNMELELNHNSKAPKKNLRRKSTRHIIHALELVVSRN
LSPNCTELQIDSCSSSEIIKKKKYNQMPVHRNRLQLMEGKEPATGAKKSNKPNEQTSKRHDSDTPEL
KLTNAPGSFTKCSNTSELKEFVNPSLPREEKEEKLETVKVSNNAEDPKDMLSGERVLTQTERSVESSIS
LVPGTDYGTQESISLLEVSTLGAKTEPNKCVSQCAAFENPKGLIHGCSKDNRNDTEGFKYPLGHEVNHS
RETSIEMEESELDAQYLQNTFKVSKRQSFAPFSNPGNAEEECATFSAHSGSLKKQSPKVFCECEQKEENQ
GKNESNIKPVQTVNITAGFPVVGQKDKPVDNAKCSIKGGSRFCLSSQFRGNETGLITPNKHGLLQNPYRI
PPLFPKSFVKTKCKNLLLENFEEHSMSPEREMGNENIPSTVSTISRNNIRENVFKEASSNINEVGSS
TNEVGSSINEIGSSDENIQAE LGRNRPKLNAMRLGVLQPEVYKQSLPGSNCKHPEIKKQYEEVVQTV
NTDFSPYLI SDNLEQPMGSSHASQVCSETPDDLDDGEIKEDTSAENDIKESSAVF SKSVQKGELSRSP
SPFTHTHLAQGYRRGAKKLESSEENLSSEDEELPCFQHLLFGKVVNIPSQSTRHSTVATECLSKNTEENL
LSLKNLNDCSNQVILAKASQEHHLSEETKCSASLSSQCSELEDLTANTNT

SGPTRRRL**EQKLI**SEEDLAANDILDYKDDDDKV**Restriction Sites:**

SgfI-MluI

Cloning Scheme:

Cloning sites used for ORF Shutting:



* The last codon before the Stop codon of the ORF

OTI Disclaimer: Due to the inherent nature of this plasmid, standard methods to replicate additional amounts of DNA in E. coli are highly likely to result in mutations and/or rearrangements. Therefore, OriGene does not guarantee the capability to replicate this plasmid DNA. Additional amounts of DNA can be purchased from OriGene with batch-specific, full-sequence verification at a reduced cost. Please contact our customer care team at custsupport@origene.com or by calling 301.340.3188 option 3 for pricing and delivery.

The molecular sequence of this clone aligns with the gene accession number as a point of reference only. However, individual transcript sequences of the same gene can differ through naturally occurring variations (e.g. polymorphisms), each with its own valid existence. This clone is substantially in agreement with the reference, but a complete review of all prevailing variants is recommended prior to use. [More info](#)

OTI Annotation: This clone was engineered to express the complete ORF with an expression tag. Expression varies depending on the nature of the gene.

Components: The ORF clone is ion-exchange column purified and shipped in a 2D barcoded Matrix tube containing 10ug of transfection-ready, dried plasmid DNA (reconstitute with 100 ul of water).

RefSeq: [NP_009225](#)

RefSeq Size: 3936 bp

RefSeq ORF: 5592 bp

Locus ID: 672

Cytogenetics: 17q21.31

Domains: BRCT, RING

Protein Families: Druggable Genome, Transcription Factors

Protein Pathways: Ubiquitin mediated proteolysis

MW: 144.3 kDa

Gene Summary:

This gene encodes a 190 kD nuclear phosphoprotein that plays a role in maintaining genomic stability, and it also acts as a tumor suppressor. The BRCA1 gene contains 22 exons spanning about 110 kb of DNA. The encoded protein combines with other tumor suppressors, DNA damage sensors, and signal transducers to form a large multi-subunit protein complex known as the BRCA1-associated genome surveillance complex (BASC). This gene product associates with RNA polymerase II, and through the C-terminal domain, also interacts with histone deacetylase complexes. This protein thus plays a role in transcription, DNA repair of double-stranded breaks, and recombination. Mutations in this gene are responsible for approximately 40% of inherited breast cancers and more than 80% of inherited breast and ovarian cancers. Alternative splicing plays a role in modulating the subcellular localization and physiological function of this gene. Many alternatively spliced transcript variants, some of which are disease-associated mutations, have been described for this gene, but the full-length natures of only some of these variants has been described. A related pseudogene, which is also located on chromosome 17, has been identified. [provided by RefSeq, May 2020]