

Product datasheet for **RC403054**

BRCA1 (NM_007294) Human Mutant ORF Clone

Product data:

Product Type:	Mutant ORF Clones
Product Name:	BRCA1 (NM_007294) Human Mutant ORF Clone
Mutation Description:	S1298X
Affected Codon#:	1298
Affected NT#:	3893
Nucleotide Mutation:	BRCA1 Mutant (S1298X), Myc-DDK-tagged ORF clone of Homo sapiens breast Cancer, early onset (BRCA1), transcript variant 1 as transfection-ready DNA
Effect:	Breast and/or ovarian cancer
Symbol:	BRCA1
Synonyms:	BRCAI; BRCC1; BROVCA1; FANCS; IRIS; PNCA4; PPP1R53; PSCP; RNF53
E. coli Selection:	Kanamycin (25 ug/mL)
Mammalian Cell Selection:	Neomycin
Vector:	pCMV6-Entry (PS100001)
Tag:	Myc-DDK
ACCN:	NM_007294
ORF Size:	3891 bp
Restriction Sites:	Sgfl-Mlul
ORF Nucleotide Sequence:	>RC403054 representing NM_007294 Red=Cloning site Blue=ORF Green=Tags(s)

TTTTGTAATACGACTCACTATAGGGCGCCGGGAATTCGTCGACTGGATCCGGTACCGAGGAGATCTGCC
GCC**GCGATCGCC**

ATGGATTATCTGCTCTTCGCGTTGAAGAAGTACAAAATGTCATTAATGCTATGCAGAAAATCTTAGAGT
GTCCCATCTGTCTGGAGTTGATCAAGGAACCTGTCTCCACAAAGTGTGACCACATATTTTGCAAATTTTG
CATGCTGAAACTTCTCAACCAGAAGAAAGGGCCTTCACAGTGTCTTTATGTAAGAATGATATAACCAA
AGGAGCCTACAAGAAAGTACGAGATTTAGTCAACTTGTGGAAGAGCTATTGAAAATCATTGTGCTTTTC
AGCTTGACACAGGTTTGGAGTATGCAAACAGCTATAATTTTGCAAAAAGGAAAATAACTCTCCTGAACA
TCTAAAAGATGAAGTTTCTATCATCAAAGTATGGGCTACAGAAACCGTCCAAAAGACTTCTACAGAGT
GAACCCGAAAATCCTTCTTGCAGGAAACAGTCTCAGTGTCCAACCTCTAACCTTGGAACTGTGAGAA



[View online »](#)

CTCTGAGGACAAAGCAGCGGATACAACCTCAAAAGACGTCTGTCTACATTGAATTGGGATCTGATTCTTC
 TGAAGATACCGTTAATAAGGCAACTTATTGCAGTGTGGGAGATCAAGAATTGTTACAATCACCCCTCAA
 GGAACCAGGGATGAAATCAGTTTGGATTCTGCAAAAAGGCTGCTTGTGAATTTCTGAGACGGATGTA
 CAAACTACTGAACATCATCAACCCAGTAATAATGATTTGAACACCACTGAGAAGCGTGCAGCTGAGAGGCA
 TCCAGAAAAGTATCAGGGTAGTTCTGTTCAAACCTGCATGTGGAGCCATGTGCCACAAATACTCATGCC
 AGCTCATTACAGCATGAGAACAGCAGTTTATTACTCACTAAAGACAGAATGAATGTAGAAAAGGCTGAAT
 TCTGTAATAAAAAGCAAACAGCCTGGCTTAGCAAGGAGCCAACATAACAGATGGGCTGGAAGTAAGGAAAC
 ATGTAATGATAGGCGGACTCCCAGCACAGAAAAAAGGTAGATCTGAATGCTGATCCCCTGTGTGAGAGA
 AAAGAATGGAATAAGCAGAACTGCCATGCTCAGAGAATCCTAGAGATACTGAAGATGTTCTTGGATAA
 CACTAAATAGCAGCATTAGAAAAGTAAATGAGTGGTTTTCCAGAAGTGAAGTGTAGGTTCTGATGA
 CTCACATGATGGGGAGTCTGAATCAAATGCCAAAGTAGCTGATGATTGGACGTTCTAAATGAGGTAGAT
 GAATATTCTGGTTCTTCCAGAAAAATAGACTTACTGGCCAGTGCCTCATGAGGCTTTAATATGAAAA
 GTGAAAGAGTTCACTCCAATCAGTAGAGATAATTTGAAGACAAAATTTGGGAAAACCTATCGGAA
 GAAGGCAAGCCTCCCAACTTAAGCCATGTAAGTAAAATCTAATTATAGGAGCATTGTTACTGAGCCA
 CAGATAATACAAGAGCGTCCCCTCACAATAAATTAAGCGTAAAAGGAGACCTACATCAGGCCCTTCATC
 CTGAGGATTTTATCAAGAAAGCAGATTTGGCAGTTCAAAAGACTCCTGAAATGATAAATCAGGGAACAA
 CCAAACGGAGCAGAATGGTCAAGTGAATATTACTAATAGTGGTCATGAGAATAAAACAAAAGGTGAT
 TCTATTAGAATGAGAAAAATCCTAACCAATAGAATCACTCGAAAAAGAATCTGCTTTCAAACGAAAG
 CTGAACCTATAAGCAGCAGTAAAGCAATATGGAAGTGAATTAATAATCCACAATTCAAAAGCCTAA
 AAAGAATAGGCTGAGGAGGAAGTCTTACCAGGCATATTCATGCGCTTGAAGTGTAGTGTAGTGAAGT
 CTAAGCCACCTAATTGTACTGAATTGCAAATGATAGTTGTTCTAGCAGTGAAGAGATAAAGAAAAAA
 AGTACAACCAAATGCCAGTCAAGCAGCAGAAAACCTACAACCTCATGGAAGGTAAGAACTGCAACTGG
 AGCCAAGAGAGTAACAAGCCAAATGAACAGACAAGTAAAAGACATGACAGCGATACTTTCCAGAGCTG
 AAGTTAACAATGCACCTGGTTCTTTTACTAAGTGTTCAAATACCAGTGAACCTAAAGAATTTGTCAATC
 CTAGCCTTCCAAGAGAAGAAAAAGAGAAAACAGTAAAGTGTCTAATAATGCTGAAGACCC
 CAAAGATCTCATGTTAAGTGGAGAAAGGTTTTGCAAAGTGAAGATCTGTAGAGAGTAGCAGTATTTC
 TTGGTACTGTTACTGATTATGGCACTCAGGAAAGTATCTCGTTACTGGAAGTGTAGCACTCTAGGGAAG
 CAAAAACAGAACCAAATAAATGTGTGAGTCAAGTGTGCAGCATTGAAAACCCCAAGGACTAATTCATGG
 TTGTTCCAAAGATAATAGAAATGACACAGAAGGCTTTAAGTATCCATTGGGACATGAAGTAAACCACAGT
 CGGAAACAAGCATAGAAATGGAAGAAAGTGAAGTGTGCTCAGTATTTGCAGAATACATCAAGGTTT
 CAAAGCGCCAGTCAATTTGCTCCGTTTTCAAATCCAGGAAATGCAGAAGAGGAATGTGCAACATTCTCTGC
 CCACTCTGGGTCTTAAAGAAACAAAGTCCAAAAGTCACTTTTGAATGTGAACAAAAGGAAGAAAATCAA
 GGAAAGAATGAGTCTAATATCAAGCCTGTACAGACAGTAAATCACTGCAGGCTTTCTGTGGTTGGTC
 AGAAAGATAAGCCAGTTGATAATGCCAAATGTAGTATCAAAGGAGGCTCTAGGTTTTGTCTATCATCTCA
 GTTCAGAGGCAACGAACTGGACTCATTACTCCAAATAAACATGGACTTTTACAAAACCCATATCGTATA
 CCACCCTTTTCCCATCAAGTCATTTGTTAAACTAAATGTAAGAAAAATCTGCTAGAGGAAAACCTTGG
 AGGAACATTCAATGTACCTGAAAGAGAAATGGGAAATGAGAACATCCAAGTACAGTGAACACAATTAG
 CCGTAATAACATTAGAGAAAAATGTTTTAAAGAAGCCAGCTCAAGCAATTAATGAAGTAGGTTCCAGT
 ACTAATGAAGTGGCTCCAGTATTAATGAAATAGGTTCCAGTGTGAAAACATTCAAGCAGAAGTGAAGTA
 GAAACAGAGGGCCAAAATGAAATGCTATGCTTAGATTAGGGTTTTGCAACCTGAGGCTATAAAACAAAG
 TCTTCTGGAAGTAATTGTAAGCATCCTGAAATAAAAAAGCAAGAATATGAAGAAGTGTTCAGACTGTT
 AATACAGATTTCTCTCCATATCTGATTTAGATAAATAGAACAGCCTATGGGAAGTGTGATGATCTC
 AGGTTTGTCTGAGACACCTGATGACCTGTTAGATGATGGTGAATAAAGGAAGATACTAGTTTTGCTGA
 AAATGACATTAAGGAAAGTTCTGCTGTTTTAGCAAAAGCGTCCAGAAAGGAGAGCTTAGCAGGAGTCT
 AGCCCTTTCACCCATACACATTTGGCTCAGGGTTACCGAAGAGGGGCCAAGAAATAGAGTCTCAGAAG
 AGAACTTACTAGTGAGGATGAAGAGCTCCCTGCTTCCAACACTTGTATTTGGTAAAGTAAACAATAT
 ACCTTCTCAGTCTACTAGGCATAGCACCCTGCTACCGAGTGTCTGTCTAAGAACACAGAGGAGAATTTA
 TTATCATTGAAGAATAGCTTAAATGACTGCAGTAACCAGGTAATATTGGCAAAGGCATCTCAGGAACATC
 ACCTTAGTGAGGAAACAAAATGTTCTGCTAGCTTGTCTTCT

AGCGGACCGACGCGTACGCGGCCGCTCGAGCAGAAAACCTCATCTCAGAAGAGGATCTGGCAGCAAATGATATCC
 TGGATTACAAGGATGACGACGA TAAGGTTTAA

Protein Sequence: >RC403054 representing NM_007294
 Red=Cloning site Green=Tags(s)

MDLSALRVEEVQNVINAMQKILECPICLLEIKEPVSTKCDHIFCKFCMLKLLNQKKGPSQCPLCKNDITK
 RSLQESTRFSQLVEELLKIICAFQLDTGLEAYANSYNFAKKENNSPEHLKDEVSI IQSMGYRNRARLLQS
 EPENPSLQETSLSVQLSNLGTVRTLRTKQRIQPQKTSVYIELGSDSSEDTVNKATYCSVGDQELLQITPQ
 GTRDEISLDSAKKAACEFSETDVTNTEHHQPSNNDLNTTEKRAAERHPEKYQGSSVSNLHVPCGTNTHA
 SSLQHENSLLLLTKDRMNVKEAEFCNKSKQPGLARSQHNRWAGSKETCNDRRTPSTEKKVDLNADPLCER
 KEWVKQKLPCCSENPRDTEVPWITLNSSIQKVNEWFSRSEDELLGSDSDHGESESENAKVADVLDVLEVD
 EYSGSSEKIDLLASDPHEALICKSERVHKSVESNIEDKIFGKTYRKKASLPNLSHVNTENLIIGAFVTEP
 QIIQERPLTNKLRKRRTSGLHPEDFIKKADLAVQKTPEMINQGTNQTQEQNGQVMNITNSGHENKTKGD
 SIQNEKNPNPIESLEKESAFKTKAEPISSSISNMELELNIHNSKAPKKNRLRRKSSTRHIALELVVSRN
 LSPNCTELQIDSCSSSEI KKKKYNQMPVRRSRLQLMEGKEPATGAKKSNKPNEQTSKRHDSDTFPEL
 KLTNAPGSFTKCSNTSELKEFVNPSLPREEKEELETVKVSNNAEADPKDMLSGERVLQTERSVESSSIS
 LVPGTDYGTQESISLLEVSTLGAKTEPNKCVSQCAAFENPKGLIHGCSKDNRNDEGFKYPLGHEVNHS
 RETSIEMEESELDAQYLQNTFKVSKRQSFAPFSNPGNAEEECATFSAHSGSLKKQSPKVTFECEQKEENQ
 GKNESNIKPVTYNITAGFPVVGQKDKPVDNAKCSIKGGRFCLSSQFRGNETGLITPNKHGLLQNPYRI
 PPLFPKISFVKTKCKKNLLEENFEHSMSPEREMGNENIPSTVSTISRNNIRENVFKEASSNINEVGSS
 TNEVGSSINEIGSSDENIQAELGRNRGPKLNAMRLGLVQPEVYKQSLPGSNCKHPEIKKQEYEEVVQTV
 NTDFSPYLISDNLEQPMGSSHASQVCSETPDDLDDGEIKEDTSAENDIKESSAVFSKVSQKGE LSRSP
 SPFTHTHLAQGYRRGAKKLESSEENLSSEDEELPCFQHLLFGKVNIPISQSTRHSTVATECLSKNTEENL
 LSLKNSLNDCSNQVILAKASQEHHLSEETKCSASLFS

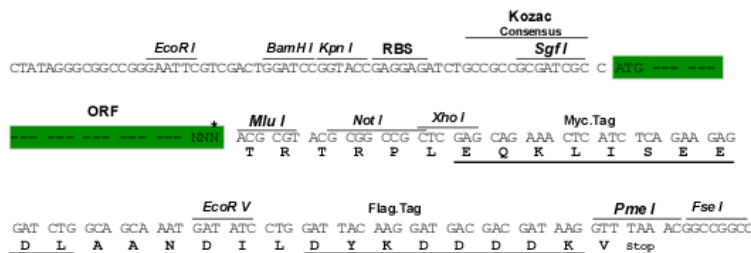
SGPTRRRLEQKLI SEEDLAANDILDYKDDDDKV

Restriction Sites:

SgfI-MluI

Cloning Scheme:

Cloning sites used for ORF Shutting:



* The last codon before the Stop codon of the ORF

OTI Disclaimer:	<p>Due to the inherent nature of this plasmid, standard methods to replicate additional amounts of DNA in E. coli are highly likely to result in mutations and/or rearrangements. Therefore, OriGene does not guarantee the capability to replicate this plasmid DNA. Additional amounts of DNA can be purchased from OriGene with batch-specific, full-sequence verification at a reduced cost. Please contact our customer care team at custsupport@origene.com or by calling 301.340.3188 option 3 for pricing and delivery.</p> <p>The molecular sequence of this clone aligns with the gene accession number as a point of reference only. However, individual transcript sequences of the same gene can differ through naturally occurring variations (e.g. polymorphisms), each with its own valid existence. This clone is substantially in agreement with the reference, but a complete review of all prevailing variants is recommended prior to use. More info</p>
OTI Annotation:	<p>This clone was engineered to express the complete ORF with an expression tag. Expression varies depending on the nature of the gene.</p>
Components:	<p>The ORF clone is ion-exchange column purified and shipped in a 2D barcoded Matrix tube containing 10ug of transfection-ready, dried plasmid DNA (reconstitute with 100 ul of water).</p>
RefSeq:	<p>NP_009225</p>
RefSeq Size:	<p>3891 bp</p>
RefSeq ORF:	<p>5592 bp</p>
Locus ID:	<p>672</p>
Cytogenetics:	<p>17q21.31</p>
Domains:	<p>BRCT, RING</p>
Protein Families:	<p>Druggable Genome, Transcription Factors</p>
Protein Pathways:	<p>Ubiquitin mediated proteolysis</p>
MW:	<p>142.7 kDa</p>

Gene Summary:

This gene encodes a 190 kD nuclear phosphoprotein that plays a role in maintaining genomic stability, and it also acts as a tumor suppressor. The BRCA1 gene contains 22 exons spanning about 110 kb of DNA. The encoded protein combines with other tumor suppressors, DNA damage sensors, and signal transducers to form a large multi-subunit protein complex known as the BRCA1-associated genome surveillance complex (BASC). This gene product associates with RNA polymerase II, and through the C-terminal domain, also interacts with histone deacetylase complexes. This protein thus plays a role in transcription, DNA repair of double-stranded breaks, and recombination. Mutations in this gene are responsible for approximately 40% of inherited breast cancers and more than 80% of inherited breast and ovarian cancers. Alternative splicing plays a role in modulating the subcellular localization and physiological function of this gene. Many alternatively spliced transcript variants, some of which are disease-associated mutations, have been described for this gene, but the full-length natures of only some of these variants has been described. A related pseudogene, which is also located on chromosome 17, has been identified. [provided by RefSeq, May 2020]