

## Product datasheet for **RC403051**

### BRCA1 (NM\_007294) Human Mutant ORF Clone

#### Product data:

Product Type:	Mutant ORF Clones
Product Name:	BRCA1 (NM_007294) Human Mutant ORF Clone
Mutation Description:	Q1273X
Affected Codon#:	1273
Affected NT#:	3817
Nucleotide Mutation:	BRCA1 Mutant (Q1273X), Myc-DDK-tagged ORF clone of Homo sapiens breast Cancer, early onset (BRCA1), transcript variant 1 as transfection-ready DNA
Effect:	Breast cancer
Symbol:	BRCA1
Synonyms:	BRCAI; BRCC1; BROVCA1; FANCS; IRIS; PNCA4; PPP1R53; PSCP; RNF53
E. coli Selection:	Kanamycin (25 ug/mL)
Mammalian Cell Selection:	Neomycin
Vector:	pCMV6-Entry (PS100001)
Tag:	Myc-DDK
ACCN:	NM_007294
ORF Size:	3816 bp
Restriction Sites:	Sgfl-Mlul
ORF Nucleotide Sequence:	>RC403051 representing NM_007294 Red=Cloning site Blue=ORF Green=Tags(s)

TTTTGTAATACGACTCACTATAGGGCGGCCGGAATTCGTCGACTGGATCCGGTACCGAGGAGATCTGCC  
GCC**CGATCGCC**

ATGGATTATCTGCTCTTCGCGTTGAAGAAGTACAAAATGTCATTAATGCTATGCAGAAAATCTTAGAGT  
GTCCCATCTGTCTGGAGTTGATCAAGGAACCTGTCTCCACAAAGTGTGACCACATATTTTGCAAATTTTG  
CATGCTGAAACTTCTCAACCAGAAGAAAGGCCCTTCACAGTGTCTTTATGTAAGAATGATATAACCAA  
AGGAGCCTACAAGAAAGTACGAGATTTAGTCAACTTGTGAAGAGCTATTGAAAATCATTGTGCTTTTC  
AGCTTGACACAGGTTTGGAGTATGCAAACAGCTATAATTTTGCAAAAAAGGAAAATAACTCTCCTGAACA  
TCTAAAAGATGAAGTTTCTATCATCAAAGTATGGGCTACAGAAACCGTCCAAAAGACTTCTACAGAGT  
GAACCCGAAAATCCTTCTTGCAGGAAACAGTCTCAGTGTCCAACCTCTAACCTTGGAACTGTGAGAA



[View online »](#)

CTCTGAGGACAAAGCAGCGGATACAACCTCAAAAGACGTCTGTCTACATTGAATTGGGATCTGATTCTTC  
 TGAAGATACCGTTAATAAGGCAACTTATTGCAGTGTGGGAGATCAAGAATTGTTACAATCACCCCTCAA  
 GGAACCAGGGATGAAATCAGTTTGGATTCTGCAAAAAGGCTGCTTGTGAATTTCTGAGACGGATGTAA  
 CAAATACTGAACATCATCAACCCAGTAATAATGATTTGAACACCACTGAGAAGCGTGCAGCTGAGAGGCA  
 TCCAGAAAAGTATCAGGGTAGTTCTGTTCAAACCTGCATGTGGAGCCATGTGCCACAAATACTCATGCC  
 AGCTCATTACAGCATGAGAACAGCAGTTTATTACTCACTAAAGACAGAATGAATGTAGAAAAGGCTGAAT  
 TCTGTAATAAAAAGCAAACAGCCTGGCTTAGCAAGGAGCCAACATAACAGATGGGCTGGAAGTAAGGAAAC  
 ATGTAATGATAGGCGGACTCCCAGCACAGAAAAAAGGTAGATCTGAATGCTGATCCCCTGTGTGAGAGA  
 AAAGAATGGAATAAGCAGAACTGCCATGCTCAGAGAATCCTAGAGATACTGAAGATGTTCTTGGATAA  
 CACTAAATAGCAGCATTAGAAAAGTTAATGAGTGGTTTTCCAGAAGTGAAGTGTAGGTTCTGATGA  
 CTCACATGATGGGGAGTCTGAATCAAATGCCAAAGTAGCTGATGATTGGACGTTCTAAATGAGGTAGAT  
 GAATATTCTGGTTCTTCCAGAAAAATAGACTTACTGGCCAGTGCCTCATGAGGCTTTAATATGAAAA  
 GTGAAAGAGTTCACTCCAATCAGTAGAGATAATTTGAAGACAAAATTTGGGAAAACCTATCGGAA  
 GAAGGCAAGCCTCCCAACTTAAGCCATGTAAGTAAAATCTAATTATAGGAGCATTGTTACTGAGCCA  
 CAGATAATACAAGAGCGTCCCCTCACAATAAATTAAGCGTAAAAGGAGACCTACATCAGGCCCTTCATC  
 CTGAGGATTTTATCAAGAAAGCAGATTTGGCAGTTCAAAAGACTCCTGAAATGATAAATCAGGGAACATA  
 CCAAACGGAGCAGAATGGTCAAGTGAATATTACTAATAGTGGTCATGAGAATAAAACAAAAGGTGAT  
 TCTATTAGAATGAGAAAAATCCTAACCAATAGAATCACTCGAAAAAGAATCTGCTTTCAAACGAAAG  
 CTGAACCTATAAGCAGCAGTAAAGCAATATGGAAGTGAATTAATAATCCACAATCAAAGCAGCTAA  
 AAAGAATAGGCTGAGGAGGAAGTCTTACCAGGCATATTCATGCGCTGAACTAGTAGTCAGTAGAAAT  
 CTAAGCCACCTAATTGACTGAATTGCAAAATGATAGTTGTTCTAGCAGTGAAGAGATAAAGAAAAAA  
 AGTACAACCAAATGCCAGTCAAGCAGCAGAAAACCTACAACCTCATGGAAGGTAAGAAAGTGAAGTGA  
 AGCCAAGAGAGTAACAAGCCAAATGAACAGACAAGTAAAAGACATGACAGCGATACTTTCCAGAGCTG  
 AAGTTAACAAATGCACCTGGTTCTTTTACTAAGTGTTCAAATACCAAGTGAACCTAAAGAATTTGTCAATC  
 CTAGCCTTCCAAGAGAAGAAAAAGAGAAAACAGTAAAGTGTCTAATAATGCTGAAGACCC  
 CAAAGATCTCATGTTAAGTGGAGAAAGGTTTTGCAAAGTGAAGATCTGTAGAGAGTAGCAGTATTTC  
 TTGGTACTGTTACTGATTATGGCACTCAGGAAAGTATCTCGTTACTGGAAGTTAGCACTCTAGGGAAGG  
 CAAAAACAGAACCAAATAAATGTGTGAGTCAAGTGTGCAGCATTGAAAACCCCAAGGACTAATTCATGG  
 TTGTTCCAAAGATAATAGAAATGACACAGAAGGCTTTAAGTATCCATTGGGACATGAAGTAAACACAGT  
 CGGAAACAAGCATAGAAATGGAAGAAAGTGAAGTGTGCTCAGTATTTGCAGAATACATTCAAGGTTT  
 CAAAGCGCCAGTCAATTTGCTCCGTTTTCAAATCCAGGAAATGCAGAAGAGGAATGTGCAACATTCTCTGC  
 CCACTCTGGGTCCTTAAAGAAACAAAGTCCAAAAGTCACTTTTGAATGTGAACAAAAGGAAGAAAATCAA  
 GGAAAGAATGAGTCTAATATCAAGCCTGTACAGACAGTAAATCACTGCAGGCTTTCTGTGGTTGGTC  
 AGAAAGATAAGCCAGTTGATAATGCCAAATGTAGTATCAAAGGAGGCTCTAGGTTTTGTCTATCATCTCA  
 GTTCAGAGGCAACGAACTGGACTCATTACTCCAAATAAATGGAAGTAAAGTAAAGTAAAGTAAAGTAAAG  
 CCACCCTTTTCCCATCAAGTCAATTTGTTAAACTAAATGTAAGAAAAATCTGCTAGAGGAAAACCTTTG  
 AGGAACATTCAATGTACCTGAAAGAGAAATGGGAAATGAGAACATCCAAGTACAGTGAACACAATTAG  
 CCGTAATAACATTAGAGAAAATGTTTTAAAGAAGCCAGCTCAAGCAATTAATGAAGTAGGTTCCAGT  
 ACTAATGAAGTGGCTCCAGTATTAATGAAATAGGTTCCAGTGTGAAAACATTCAAGCAGAAGTGAAGTGA  
 GAAACAGAGGGCCAAAATGAAATGCTATGCTTAGATTAGGGTTTTGCAACCTGAGGCTATAAAACAAAG  
 TCTTCTGGAAGTAATTGTAAGCATCCTGAAATAAAAAGCAAGAATATGAAGAAGTAGTTCAGACTGTT  
 AATACAGATTTCTCTCCATATCTGATTTAGATAAATAGAACAGCCTATGGGAAGTAGTCATGCATCTC  
 AGGTTTGTCTGAGACACCTGATGACCTGTTAGATGATGGTGAATAAAGGAAGATACTAGTTTTGCTGA  
 AAATGACATTAAGGAAAGTTCTGCTGTTTTAGCAAAAGCGTCCAGAAAGGAGAGCTTAGCAGGAGTCTC  
 AGCCCTTTCACCCATACACATTTGGCTCAGGGTACCGAAGAGGGGCCAAGAAATAGAGTCTCAGAAG  
 AGAACTATCTAGTGAAGATGAAGAGCTCCCTGCTTCCAACACTTGTTATTTGGTAAAGTAAACAATAT  
 ACCTTCTCAGTCTACTAGGCATAGCACCCTGCTACCGAGTGTCTGTCTAAGAACACAGAGGAGAATTTA  
 TTATCATTGAAGAATAGCTTAAATGACTGCAGTAAC

AGCGGACCGACGCGTACGCGGCCGCTCGAGCAGAAAACCTCATCTCAGAAGAGGATCTGGCAGCAAATGATATCC  
 TGGATTACAAGGATGACGACGA TAAGGTTTAA

**Protein Sequence:** >RC403051 representing NM\_007294  
 Red=Cloning site Green=Tags(s)

MDLSALRVEEVQNVINAMQKILECPICLELIEKPVSTKCDHIFCKFCMLKLLNQKKGPSQCPLCKNDITK  
 RSLQESTRFSQLVEELLKIICAFQLDTGLEAYANSYFVAKKENNSPEHLKDEVSI IQSMGYRNRARLLQS  
 EPENPSLQETSLSVQLSNLGTVRTLRKQRIQPQKTSVYIELGSDSSEDTV NKATYCSVGDQELLQITPQ  
 GTRDEISLDSAKKAACEFSETDVTNTEHHQPSNNDLNTTEKRAAERHPEKYQGSSVSNLHVPCGTNTHA  
 SSLQHENSLLLLTKDRMNVKEAEFCNKSKQPGLARSQHNRWAGSKETCNDRRTPSTEKKVDLNADPLCER  
 KEWVKQKLPCCSENPRDTEVPWITLNSSIQKVNEWFSRSEDELLGSDSDHGESESENAKVADVLDVLEVD  
 EYSGSSEKIDLLASDPHEALICKSERVHKSVESNIEDKIFGKTYRKKASLPNLSHVNTENLIIGAFVTEP  
 QIIQERPLTNLKRKRPTSGLHPEDFIKKADLAVQKTPEMINQGTNQTQEQNGQVMNITNSGHENKTKGD  
 SIQNEKNPNPIESLEKESAFKTKAEPISSSISNMELELNIHNSKAPKKNRLRRKSSTRHIALELVVSRN  
 LSPNCTELQIDSCSSSEI KKKKYNQMPVHRNRLQLEMGKEPATGAKKSNKPNEQTSKRHDSDTFPEL  
 KLTNAPGSFTKCSNTSELKEFVNPSLPREEKEELETVKVSNNAEDPKDMLSGERVLQTERSVESSSIS  
 LVPGTDYGTQESISLLEVSTLGAKTEPNKCVSQCAAFENPKGLIHGCSKDNRNDEGFKYPLGHEVNHS  
 RETSIEMEESELDAQYLQNTFKVSKRQSFAPFSNPGNAEEECATFSAHSGSLKKQSPKVTFECEQKEENQ  
 GKNESNIKPVQTVNITAGFPVVGQKDKPVDNAKCSIKGGRFCLSSQFRGNETGLITPNKHGLLQNPYRI  
 PPLFPKISFVKTKCKKNLLEENFEHSMSPEREMGNENIPSTVSTISRNNIRENVFKEASSNINEVGSS  
 TNEVGSSINEIGSSDENIQAELGRNRGPKLNAMRLGLVQPEVYKQSLPGSNCKHPEIKKQEYEEVVQTV  
 NTDFSPYLISDNLEQPMGSSHASQVCSETPDDLDDGEIKEDTSAFENDIKESSAVFSKSVQKGE LSRSP  
 SPFTHHLAQGYRRGAKKLESSEENLSSEDEELPCFQHLLFGKVNIPISQSTRHSTVATECLSKNTEENL  
 LSLKNSLNDCSN

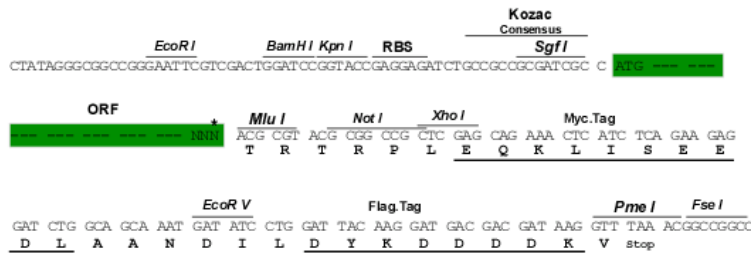
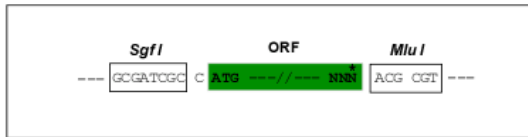
SGPTRRRLEQKLI SEEDLAANDILDYKDDDDKV

**Restriction Sites:**

SgfI-MluI

**Cloning Scheme:**

Cloning sites used for ORF Shutting:



\* The last codon before the Stop codon of the ORF

<b>OTI Disclaimer:</b>	<p>Due to the inherent nature of this plasmid, standard methods to replicate additional amounts of DNA in E. coli are highly likely to result in mutations and/or rearrangements. Therefore, OriGene does not guarantee the capability to replicate this plasmid DNA. Additional amounts of DNA can be purchased from OriGene with batch-specific, full-sequence verification at a reduced cost. Please contact our customer care team at <a href="mailto:custsupport@origene.com">custsupport@origene.com</a> or by calling 301.340.3188 option 3 for pricing and delivery.</p> <p>The molecular sequence of this clone aligns with the gene accession number as a point of reference only. However, individual transcript sequences of the same gene can differ through naturally occurring variations (e.g. polymorphisms), each with its own valid existence. This clone is substantially in agreement with the reference, but a complete review of all prevailing variants is recommended prior to use. <a href="#">More info</a></p>
<b>OTI Annotation:</b>	This clone was engineered to express the complete ORF with an expression tag. Expression varies depending on the nature of the gene.
<b>Components:</b>	The ORF clone is ion-exchange column purified and shipped in a 2D barcoded Matrix tube containing 10ug of transfection-ready, dried plasmid DNA (reconstitute with 100 ul of water).
<b>RefSeq:</b>	<a href="#">NP_009225</a>
<b>RefSeq Size:</b>	3816 bp
<b>RefSeq ORF:</b>	5592 bp
<b>Locus ID:</b>	672
<b>Cytogenetics:</b>	17q21.31
<b>Domains:</b>	BRCT, RING
<b>Protein Families:</b>	Druggable Genome, Transcription Factors
<b>Protein Pathways:</b>	Ubiquitin mediated proteolysis
<b>MW:</b>	139.9 kDa
<b>Gene Summary:</b>	<p>This gene encodes a 190 kD nuclear phosphoprotein that plays a role in maintaining genomic stability, and it also acts as a tumor suppressor. The BRCA1 gene contains 22 exons spanning about 110 kb of DNA. The encoded protein combines with other tumor suppressors, DNA damage sensors, and signal transducers to form a large multi-subunit protein complex known as the BRCA1-associated genome surveillance complex (BASC). This gene product associates with RNA polymerase II, and through the C-terminal domain, also interacts with histone deacetylase complexes. This protein thus plays a role in transcription, DNA repair of double-stranded breaks, and recombination. Mutations in this gene are responsible for approximately 40% of inherited breast cancers and more than 80% of inherited breast and ovarian cancers. Alternative splicing plays a role in modulating the subcellular localization and physiological function of this gene. Many alternatively spliced transcript variants, some of which are disease-associated mutations, have been described for this gene, but the full-length natures of only some of these variants has been described. A related pseudogene, which is also located on chromosome 17, has been identified. [provided by RefSeq, May 2020]</p>